
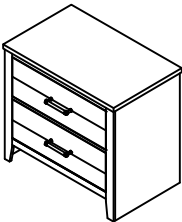


# ASSEMBLY INSTRUCTIONS

ITEM NO : B8170 - 2 NIGHT STAND

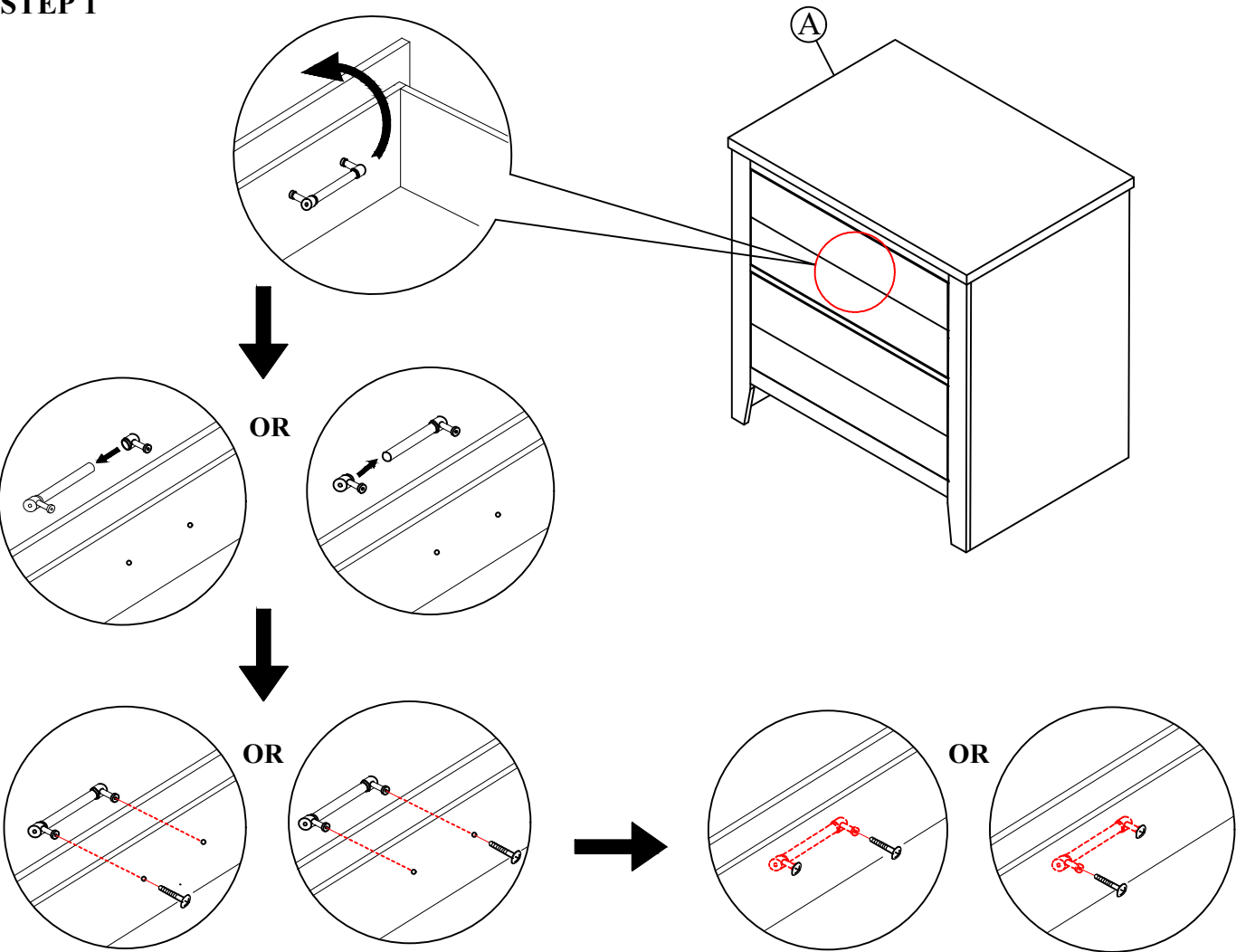
BOX OF NIGHT STAND

ITEM	DRAWING	DESCRIPTION	QTY
A		NIGHT STAND	1



COMPLETED NIGHT STAND  
ASSEMBLY

STEP 1



THE ANTI TIPPING HARDWARE IS LOCATED IN THE TOP DRAWER OF NIGHT STAND.

NOTE : MUST TIGHTEN SCREWS PERIODICALLY. WITH USE SCREW MAY BECOME LOOSE.  
CHECK TIGHTNESS OF ALL SCREW EVERY 6-8 WEEKS.

CLEANING INSTRUCTION

After assembly, clean & polish the completed parts if necessary with soft cloth and industrial recognized furniture polish

MADE IN MALAYSIA