

Kiss N Makeup

Caracole

Designed with the utmost attention to detail, this makeup vanity introduces a note of glamour in a soft-sheen metallic. Features a flip top with a mirrored back and right side drawer with a removable felt-lined tray for jewelry and essentials. Elongated drawer pulls, inspired by an Art Deco pendant with a faux stone center, add a touch of grace. Take note, its multifunctional design also works beautifully as a desk, for those mornings when your bedroom is also a boardroom.

SKU: CLA-020-451

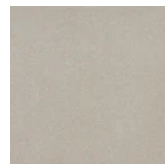
Dimensions in Inches: 55.25W × 20.0D × 30.0H

Dimensions in CM: 140.335W × 50.8D × 76.2H

Features:

- Case finished in Soft Silver Paint.
- Top finished in Vanilla Cream.
- Flip top with back mirror and felt lined bottom.
- Two side drawers. Right side drawer with removable felt lined tray.
- Interior in Soft Silver Paint.

Finish:



Soft Silver Paint



Vanilla Cream

