

## INTRODUCTION

Experience ZLINE Attainable Luxury with industry-leading kitchen and bath products that provide an elevated luxury experience, all designed in Lake Tahoe, USA. The ZLINE 695-28 is a 28 in. stainless steel range hood insert with a modern design and built-to-last quality, making it a great addition to any kitchen. This hood's high-performance, 400 CFM 4-speed motor will provide all the power you need to quietly and efficiently ventilate your stove while cooking. With its classic 430 grade stainless steel, this range hood contains rust, temperature, and corrosion-resistant properties to ensure a durable vent hood that will last for years to come. Enjoy modern features, including built-in LED lighting for an illuminated culinary experience and dishwasher-safe stainless steel baffle filters for easy clean-up. This range hood insert has a ducted vent with easy, simple installation. ZLINE Kitchen and Bath stands by all products with its manufacturer parts warranty. The 695-28 ships next business day when in stock.

## FEATURES & BENEFITS

- Easy-to-use push button controls let you easily control fan speed and lighting
- 4-Speed fan control (120/240/320/400 CFM) to choose the appropriate air flow for your cooking situation
- 400 CFM air flow (highest speed setting) efficiently exhausts large amounts of air away from your cooking area

- Fixed vent with ductwork that easily connects to the top of the range hood for external venting
- Dishwasher-safe stainless steel baffle filters
- LED lighting illuminates the cooktop beneath the hood
- Designed to fit standard (circular) ductwork for simple installation

## SPECIFICATIONS OVERVIEW

### GENERAL PROPERTIES

SKU	695-28	MAP	\$639.95
Color Code - Color Name	SS - Stainless Steel		
Airflow (Q/L/M/H)	120/240/320/400		
# of Lights	2		
# of Speeds	4		
Duct Size (In.)	6		
Max Cfm	400		

### LIMITED WARRANTY

Warranty	3 year parts, life-time motor warranty
----------	--

### DIMENSIONS

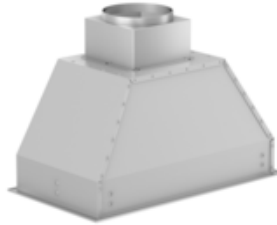
Product Dimensions (Combined)	28 in. W x 15 in. D x 14.2 in. H
Chimney Dimensions	N/A

### POWER / RATINGS

Amps	3.5
Voltage	110

### CERTIFICATIONS

ETL Listed
------------



**SPECIFICATIONS IN-DEPTH**

**GENERAL PROPERTIES**

SKU	695-28	MAP	\$639.95
Color Code - Color Name	SS - Stainless Steel		
Airflow (Q/L/M/H)	120/240/320/400		
Button Panel	Push Button Control Panel (4-Speed Fan Control/Lights/3 Minute AutoTimer with Delayed Shutoff)		
# of Lights	2		
# of Speeds	4		
Decibels	51/55/58/61		
Duct Size (In.)	6		
Max Cfm	400		
Rh: Outdoor Approved			
Rh: Recirculating	No		
Rh: Remote Blower	No		

**LIMITED WARRANTY**

Warranty	3 year parts, life-time motor warranty
----------	--

**DIMENSIONS**

Product Dimensions (Combined)	28 in. W x 15 in. D x 14.2 in. H
Chimney Dimensions	N/A

**POWER / RATINGS**

Amps	3.5
Voltage	110
Watts	385

**CERTIFICATIONS**

ETL Listed
------------

