

# REF18FCBIPLV

18" BUILT-IN FREEZER COLUMN, LEFT SWING DOOR WITH ICE MAKER,  
PANEL READY (STAINLESS STEEL PANEL KIT AVAILABLE)



Energy Star rated freezer with 8.6 cu.ft of total storage capacity, powered by variable-speed compressor and evaporator.

Flush or proud installation in 84" high kitchen cabinets.

Dual Cooling Shield System: automated defrosting of evaporator ensures optimal food preservation.

Automatic ice maker with daily capacity of 3.9 lbs of filtered ice.

Digital LED touch interface with user-friendly controls for temperature, speed-freeze and ice making.

Soft close freezer drawers.

Height-adjustable door storage bins.

Stainless steel door panel kit available as optional accessory. Stainless steel toe kick included in the unit. Connection kit for multiple installations included in the unit.

Choose Professional, Master or Heritage Series handle kit to match your other Bertazzoni kitchen appliances. Purchase Décor Sets in Gold (DS2HERTGO), Polished Copper (DS2HERTPC) or Satin Black (DS2HERTSB) to personalize your Heritage Series handles (6 handle finials per set).

2 years parts & labor warranty and 5 years labor warranty for the entire sealed system.

ADA compliant.

## PRODUCT FEATURES

Size	H: 83 9/16" W: 17 3/4" D: 23 5/16"
Door finish	Panel ready
Interior finish	Stainless steel back wall
User interface	Internal digital LED touch interface
Lighting	LED lights on sides and top
Shelves	1 stationary + 3 height adjustable
Drawers	4
Door storage	3 height-adjustable bins
Ice maker	Automatic ice maker
Ice production capacity	3.9 lbs / 24hrs
Modes	Super freeze, Ice maker, Water filter replacement alarm, Eco mode, Vacation mode, Sabbath mode
Open door alarm	Yes

## INTERIOR CAPACITY

Total volume	8.6 cu.ft
--------------	-----------

## TECHNICAL SPECIFICATIONS

Electrical supply	115 V 60 HZ - 160 W 2 Amp
Power connection	NEMA 5-15P with 90" power cord
Sound rating	43 dbA
Energy consumption	452.0 kWh/yr
Water connection	1/4" waterline with shut-off valve
Water filter	Yes - internal
Water supply pressure	25-80 psi (1.7-5.5 bar)
Certification	ADA Compliant,CEC,ETL
Warranty	2 years parts & labor Sealed system: 5 years labor
Packaging dimensions and weight	W 20 1/4" H 90 9/16" D 26 3/8" 231.0 lbs

## OPTIONAL ACCESSORIES

Z370001	Replacement water filter
SP18CX	Stainless steel door panel kit
PROHKCOL	Handle kit - Professional series
MASHKCOL	Handle kit - Master series
HERHKCOL	Handle kit - Heritage series



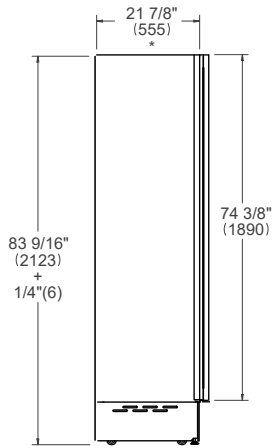
# REF18FCBIPLV

18" BUILT-IN FREEZER COLUMN, LEFT SWING DOOR WITH ICE MAKER, PANEL READY (STAINLESS STEEL PANEL KIT AVAILABLE)

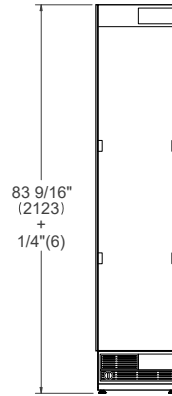


## PRODUCT DIMENSIONS

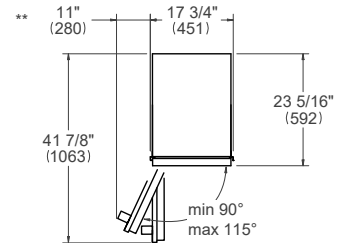
SIDE VIEW



FRONT VIEW



TOP VIEW

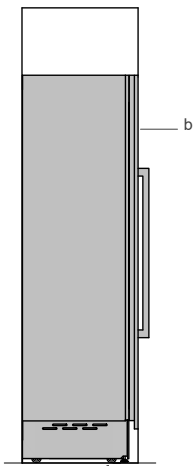


\* Depth without door

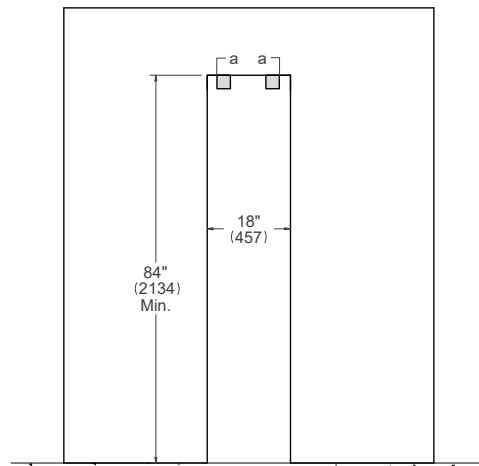
\*\* Maximum Overall Handle Dimension, 3/4" (19) door panel thickness

## CUTOUT DIMENSIONS

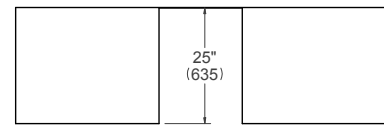
SIDE VIEW



FRONT VIEW



TOP VIEW



For a 25" (635) flush inset depth, max door panel thickness is 15/16" (24). Max door panel weight is 66 lbs (30 kg).

(a) Anti-tipping brackets – included with appliance

(b) Panel dimensions available on Door Panel Specs, Built-in Food Preservation Design Guide or Installation Manual

## ELECTRICAL & WATER CONNECTION



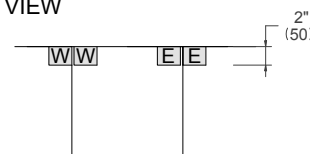
A properly-grounded, horizontally-mounted electrical receptacle should be installed according to this drawing.



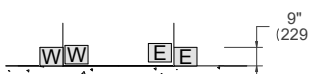
To connect to the water supply system, use a 1/4" waterline with a minimum length of 60" (1500).

Connection(s) placement within the opening may require additional cabinet depth.

TOP VIEW



FRONT VIEW



## INSTALLATION REQUIREMENTS

If the appliance(s) is not connected through the side profile trims to secured cabinetry anti-tip brackets must be installed.

Dimensions in parentheses are millimeters unless otherwise specified.

A separate circuit breaker servicing only this appliance is recommended.

For installation of multiple products in combination, refer to the Built-in Food Preservation Design Guide at [us.bertazzoni.com](http://us.bertazzoni.com) or [ca.bertazzoni.com](http://ca.bertazzoni.com)

**Disclaimer:** while every effort has been made to ensure the accuracy of the information contained in this document, Fratelli Bertazzoni reserves the right to change it at any time without notice. For detailed installation instructions, consult the installation manual. Fratelli Bertazzoni, Bertazzoni and the winged wheel brand icon are registered trademarks of Bertazzoni Spa.