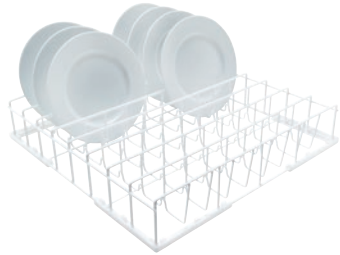


U 506

Basket

For the optimum loading of plates.



- With 2 rows for different sized plates
- Optional addition of cutlery holder E 167
- Distance between rails 2 3/16 (54) in (mm)

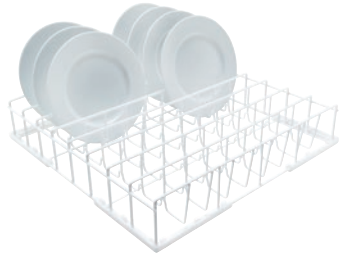
EAN: 4002515249970 / Material number: 09508640 / Old Material Number: 67650601D

Product category	
Fresh-water dishwashers	•
Tank dishwashers	•
Throughfeed tank dishwashers	•
Machine affiliation	
G 8066	•
PG 8041	•
PG 8043	•
PG 8045	•
PG 8055	•
PG 8055 U	•
PG 8056	•
PG 8056 U	•
PG 8057 TD	•
PG 8057 TD U	•
PG 8058	•
PG 8058 U	•
PG 8059	•
PG 8059 U	•
PG 8060	•
PG 8061	•
PG 8061 U	•
PG 8165	•
PG 8166	•
PG 8169	•
PG 8172	•
PG 8172 Eco	•
PTD 901	•
PG 8096	•
PG 8096 U	•
PG 8099	•
PG 8099 U	•
PFD 400	•
PFD 400 U	•
PFD 401	•
PFD 401 U	•
PFD 402	•
PFD 402 U	•
PFD 404	•
PFD 404 U	•
PFD 405	•
PFD 405 U	•
PFD 407	•
PFD 407 U	•
PFD 408 U	•
PTD 702	•
PTD 703	•
PTD 704	•
Product category	
Basket for plates	•

U 506

Basket

For the optimum loading of plates.



EAN: 4002515249970 / Material number: 09508640 / Old Material Number: 67650601D

Product characteristics	
Material	Wire, rilsan-coated
Color	White
Distance between rails in mm	2 3/16 (54)
Capacity	
Plates up to Ø 7 7/8" (200 mm) [number]	16
Dimensions and weight	
External dimensions, net height in inches	92
External dimensions, net width in inches	500
External dimensions, net depth in inches	500
External dimensions, gross height in inches	10 1/4 (260)
External dimensions, gross width in inches	20 1/2 (520)
External dimensions, gross depth in inches	20 7/8 (530)
Net weight in lbs	5 (2.03)
Gross weight in lbs	7 (3.11)