

24-Inch Convection Microwave



DCM24S – Silver Stainless

Features & Benefits

- Convection and microwave combination cooking
- Stainless steel interior
- Sensor technology
- Automatic start
- Automatic defrost
- Countertop or built-in installation

Controls

CONTROL TYPE	Membrane Touch
CLOCK	Yes
CHILD LOCK	Yes

Microwave Oven

MICROWAVE CAPACITY (CU. FT.)	1.5
MICROWAVE POWER	900W
SENSOR COOK	Yes
CONVECTION	Yes
LIGHTING	Halogen

Weights & Dimensions

SHIPPING WEIGHT (LBS.)	60
PRODUCT DIMENSIONS (W X H X D IN INCHES)	24 3/8 x 14 7/8 x 19

Technical Details

ELECTRICAL REQUIREMENTS	120V, 60 Hz, 15A
-------------------------	------------------

Warranty

FULL COVERAGE	2 Years
---------------	---------

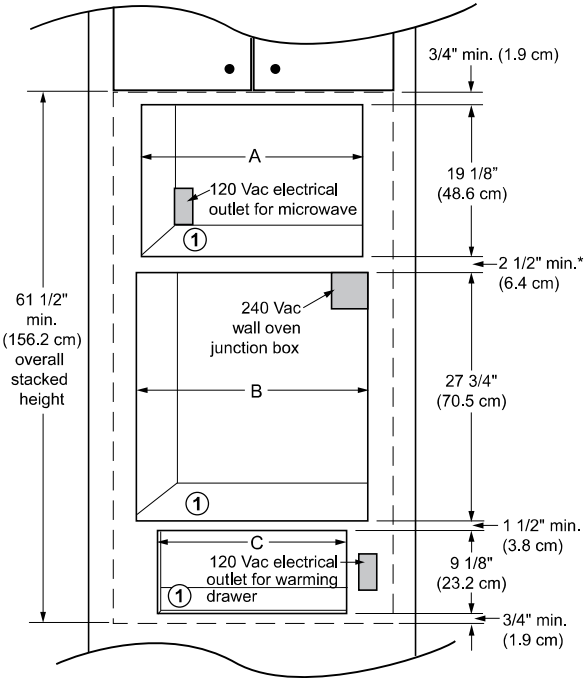
Accessories (Optional)

ADCMTK301S	30" Trim Kit	\$299
------------	--------------	-------

24-Inch Convection Microwave

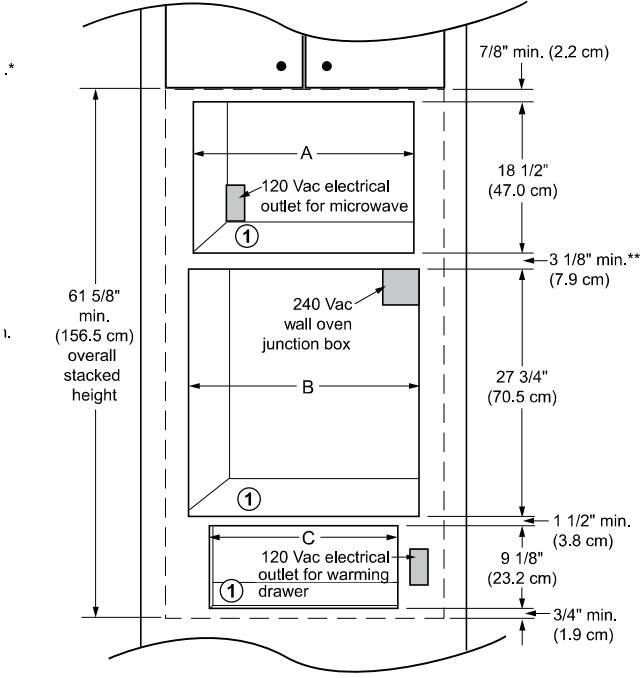
dacor

Cutout Dimensions	
ADCMTK TRIM KIT CUTOUT WIDTH (IN/CM)	28 ¼ / 71.8
AOCTK TRIM KIT CUTOUT WIDTH (IN/CM)	25 ¼ / 64.1



* 3 1/2" (8.9 cm) recommended

CUTOUT DIMENSIONS WITH
ADCMTK MICROWAVE TRIM KIT



** 4 1/8" (10.5 cm) recommended

CUTOUT DIMENSIONS WITH
AOCTK MICROWAVE TRIM KIT

Product Dimensions

