

Castor

Caracole

An artful integration of form and function, this faceted storage ottoman is named for one of the Gemini twins in Greco-Roman mythology. Upholstered in a luxuriously soft mohair fabric, its sculptural silhouette is balanced on a Dark Chocolate plinth base. Style on its own in a living room or conversation nook, or pair with Pollux and Gemini, our faceted spot table, for chic end-of-bed storage and plush seating option.



SKU: UPH-422-041-A

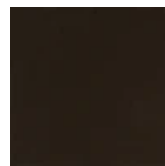
Dimensions in Inches: 26.0W × 15.5D × 18.5H

Dimensions in CM: 66.04W × 39.37D × 46.99H

Features:

- Fully upholstered storage ottoman.
- Base in Dark Chocolate.
- Interior finish in UV Sorrel.
- Pairs with UPH-422-045-A and UPH-422-046-A.

Finish:



Dark Chocolate

Fabric:

IMAGE
COMING
SOON

2681-91CC

Construction: Seat cushion with foam.