



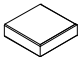



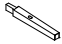







ASSEMBLY INSTRUCTION FOR

38"H DINING SIDE CHAIR

D-3720-8-SC1

Caution:Please read instructions thoroughly before unpacking assembly parts. Sharp, exposed staple tips can cause injury, therefore, for your protection, please remove any exposed staples used in packing.

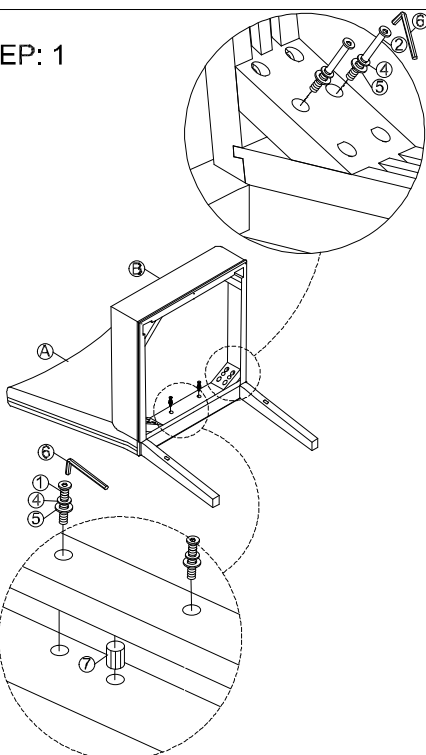
- 1.We recommend that you should assemble this product with the assistance of another person; this will make assembly easier, and will help to eliminate damage to the product or injury to persons during assembly.
- 2.Be sure to check all packing materials carefully for small parts that may have come loose inside the carton during shipment.
- 3.Please do not over tighten screws or bolts.
- 4.Please put all parts on a non-abrasive floor before assembly, and follow the assembly steps to assemble your newly purchased product correctly and efficiently.

PARTS LIST				HARDWARE LIST				
NO.	PART DESC		Q'TY	NO.	HARDWARE DESC		Q'TY	
A	Chair Back		D-3720-8-SC1BFR	1pc	1	 Allen bolt (Ø1/4"*1-4/7")	PD-3720-SC1HW	2pcs
B	Seat Box /w seat cushion		D-3720-8-SC1SEA	1pc	2	 Allen bolt (Ø1/4"*3-5/9")		4pcs
C	L-Legs		D-3720-8-SC1LEG	1pc	3	 Allen bolt (Ø1/4"*2")		4pcs
D	R-Legs		D-3720-8-SC1LEG	1pc	4	 Spring washer (Ø1/4")		10pcs
E	Stretcher		D-3720-8-SC1STR	2pcs	5	 Flat washer (Ø1/4")		10pcs
				6	 Allen key (M4)	1pc		
				7	 Dowel (Ø2/5"*1-1/6")	1pc		
				8	 Screw (#1/3"*1-7/9)	4pcs		
				 SCREW-DRIVER(NOT PROVIDED)				

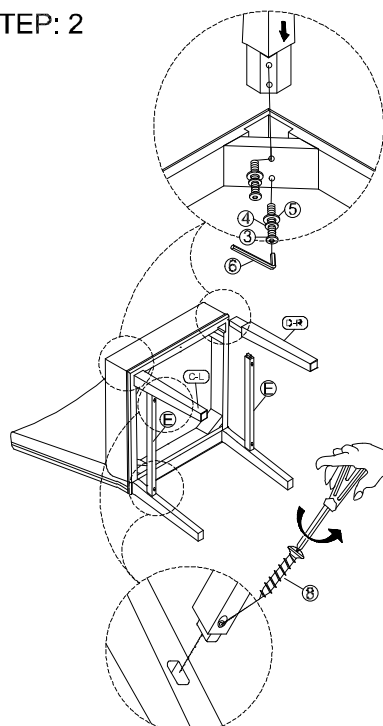


Only tighten all bolts when all bolts aligned with bolt inserts.

STEP: 1



STEP: 2



Assembly Completed

