

# REF24BMBPNB

REFRIGERATOR 24" BOTTOM MOUNT INTEGRATED PANEL READY



Energy Star refrigerator & freezer with 8.6 cu.ft capacity.

Optimized airflow design keeps temperature constant and even throughout entire refrigerator.

Total No-Frost system: automated defrosting of evaporator ensures food stays always fresh.

1 full-width crisper with humidity-control & 1 with independent temperature control, 3 adjustable-height shelves and 3 door bins ensure organized storage and preservation of food.

1 extra large & 2 standard size drawers in freezer compartment ensure easy organization and retrieval of frozen goods.

Electronic touch interface with user-friendly controls for temperature management.

Interior LED lighting ensures maximum visibility.

Reversible doors for left or right swing configuration.

2 years parts & labor warranty.

## PRODUCT FEATURES

Size	W 24"
Volume	Ref 6.2 cu.ft / Frz 2.4 cu.ft
Door finish	Panel ready
User interface	Internal digital LED touch interface
Lighting	LED on the top
Refrigerator shelves	1 stationary - 3 height adjustable
Refrigerator crispers	1 drawer with adjustable humidity + 1 drawer with separate temperature control
Freezer compartment	3 drawers
Door storage	1 bin with lid - 2 height adjustable open bins
Settings	Super cool, Super freeze, Eco mode, Vacation mode

## TECHNICAL SPECIFICATIONS

Electrical supply	115 V 60 HZ - 85 W - 0.8 Amp
Power connection	NEMA 5-15P with 41' "" power cord
Sound rating	41 dbA
Energy consumption	372.0 kwh/yr
Certification	CEC,ETL
Warranty	2 years parts & labor
Packaging dimensions	W 22 7/16" H 72 7/16" D 22 9/16"
Weight	139.0 lbs

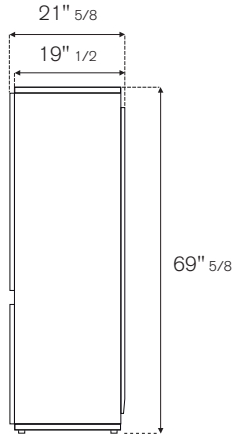


# REF24BMBPNB

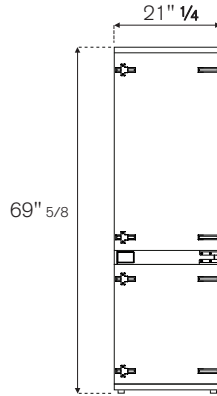
REFRIGERATOR 24" BOTTOM MOUNT INTEGRATED PANEL READY



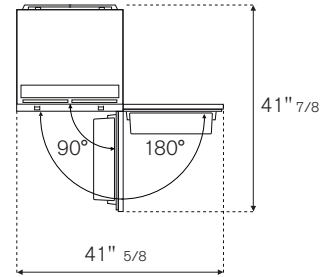
SIDE



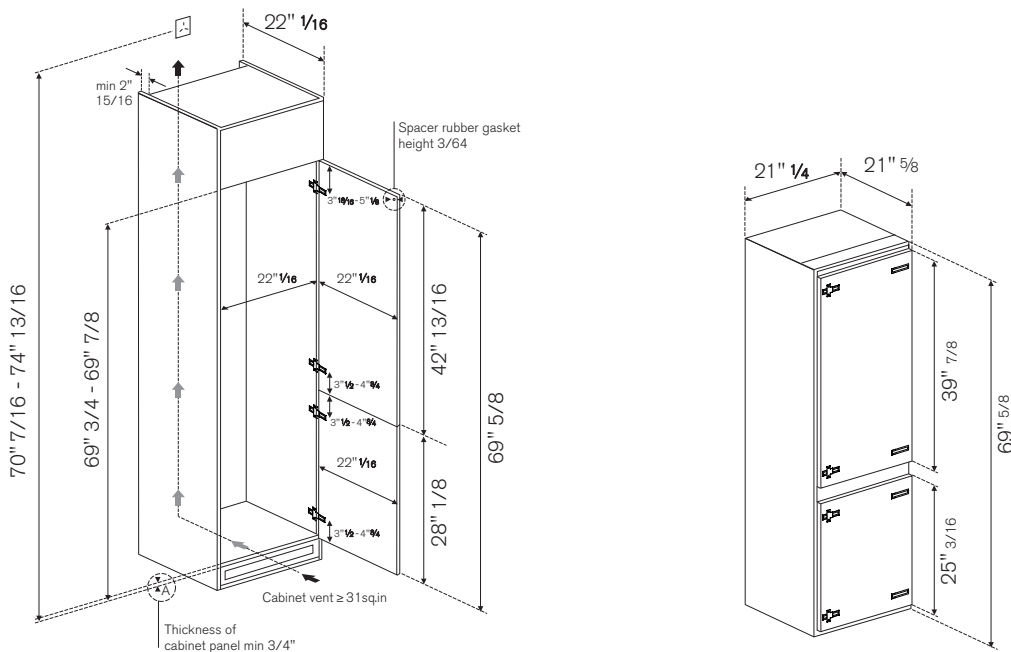
FRONT



TOP



## CUTOUT DIMENSIONS



The refrigerator is installed on the cabinet base shelf and not on the kitchen floor.

## ELECTRICAL CONNECTION

A properly-grounded, electrical receptacle should be installed. A separate circuit breaker servicing only this appliance is recommended. Do not use a multi-purpose socket with other electrical appliances.

## INSTALLATION REQUIREMENTS

The max weight for the cabinet panels is 37.5 lbs (17kg) per panel.