

# DENON<sup>®</sup>

## DCD-50

COMPACT DISC PLAYER

# Quick Start Guide

Guide de démarrage rapide / Guía de inicio rápido

## Read Me First....

Lisez-moi en premier.... / Lea esto primero....

ENGLISH

FRANÇAIS

ESPAÑOL

# Welcome

Thank you for choosing a Denon CD player. This guide provides step-by-step instructions for setting up your CD player.










**Please do not return this unit to the store – call for assistance.**

**If you need help... :**


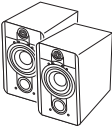


If you need additional help in solving problems, contact Denon customer service in your area.  
For details, see the Denon homepage.  
[www.denon.com](http://www.denon.com)

# Before You Begin

## What’s In the Box

Quick Start Guide 	Compact disc player 
Owner’s Manual 	Power cord 
Safety Instructions 	Remote control unit (built-in battery) 
Warranty (for North America model only) 	Caps (silver) 
	Coaxial digital cable 

## Required for Basic connections

			
Amplifier	Speaker systems	Speaker cables	Audio cable



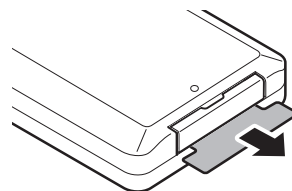
These drawings are for illustrative purposes only and may not represent the actual product(s).

# Setup

There are five steps to the setup process.

- 1** Before using the remote control unit
- 2** Placing this unit
- 3** Connect the CD player to the amplifier
- 4** Plug the power cord into a power outlet
- 5** Begin CD playback

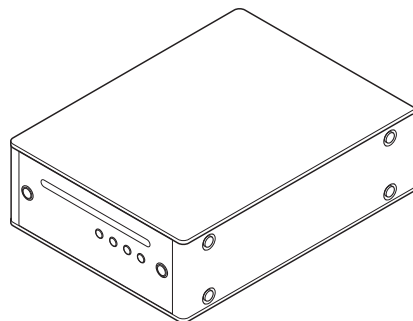
## **1** Before using the remote control unit



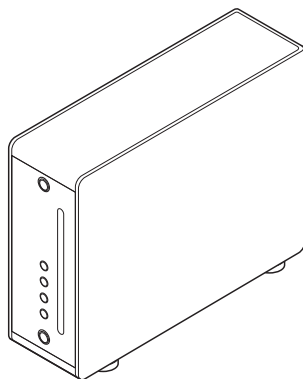
## **2** Placing this unit

### ☐ Horizontal placement

The feet are initially attached to the unit for horizontal installation.

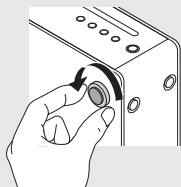


## ❑ Vertical placement

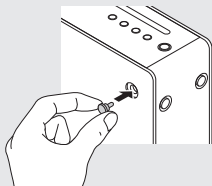


### 1 Remove the feet.

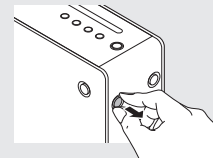
- Rotate each of the 4 feet counter-clockwise to remove.



### 2 Insert the supplied caps (silver) into the holes from which the feet were removed.



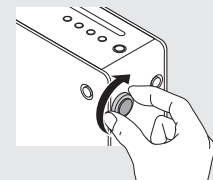
### 3 Remove the cap (black).



#### NOTE

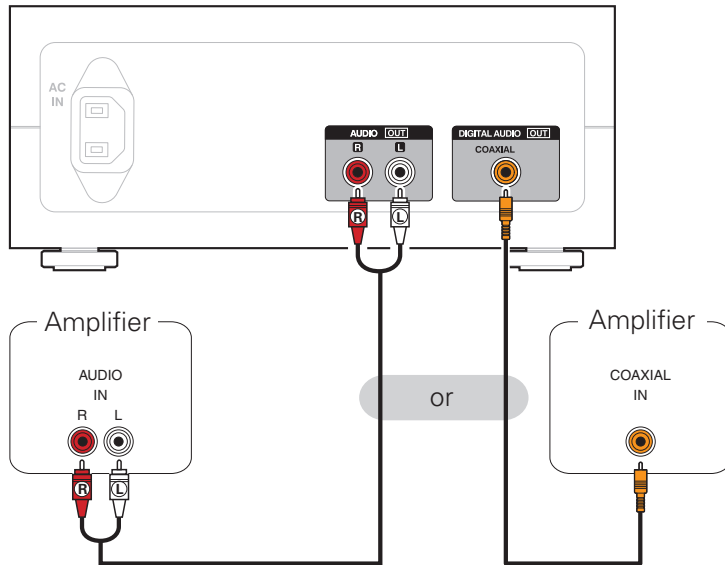
Be careful not to damage your nails when removing the caps. If necessary, use a thin-tipped tool to remove the caps. However, be careful not to damage the unit when using tools.

### 4 Rotate the removed feet clockwise to attach them.

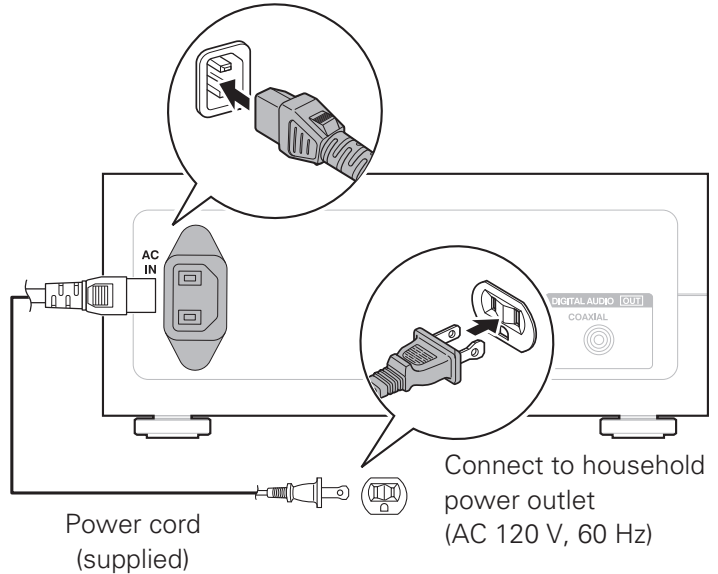


**3**

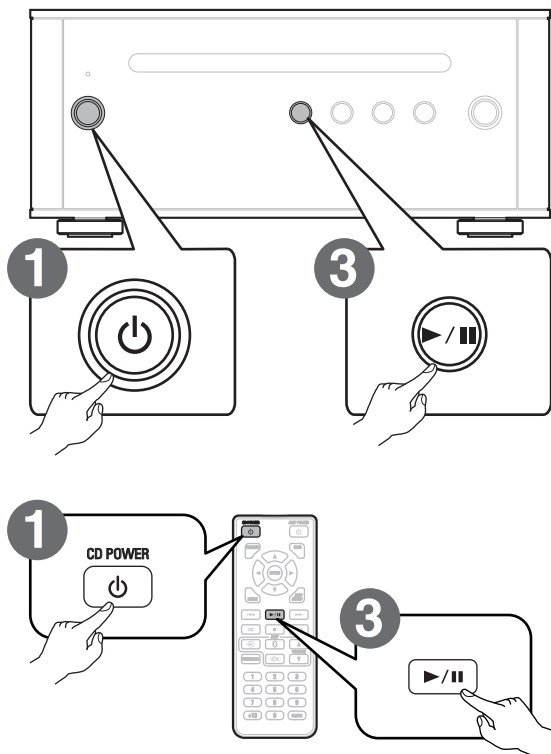
**Connect the CD player to the amplifier**

**4**

**Plug the power cord into a power outlet**

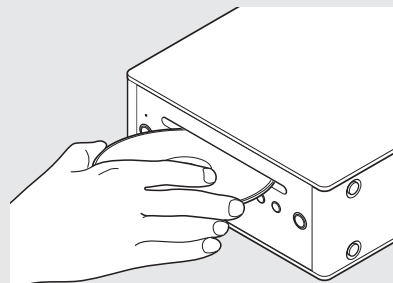


## 5 Begin CD playback



**1** Turn the CD player's power on.

**2** Insert a disc.



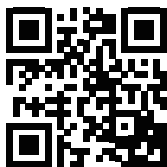
**3** Press ►/||.  
Playback starts.

# Owner's Manual

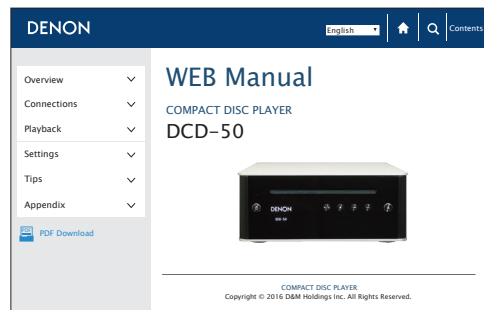
Please reference to the Owner's Manual for more details about the setup and operation of the CD player and its features.

## ❏ Online Version

Enter the following URL into your web browser:  
[manuals.denon.com/DCD50/NA/EN/](http://manuals.denon.com/DCD50/NA/EN/)



Online Manual

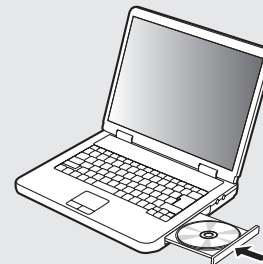


## ❏ Printable Version

Access the print version of the owner's manual from the included CD-ROM or select the “PDF Download” link from the Online Version.

1

**Insert the disc into your PC.**



2

**Follow the screen or double click on the PDF file.**

**DENON®**  
[www.denon.com](http://www.denon.com)

Printed in Vietnam 5411 11451 00AD  
Copyright © 2015 D&M Holdings Inc. All Rights Reserved.