

HydroTap Celsius Plus All-in-One (AIO)

Boiling/Chilled (BC) 120V Product Spec Sheet



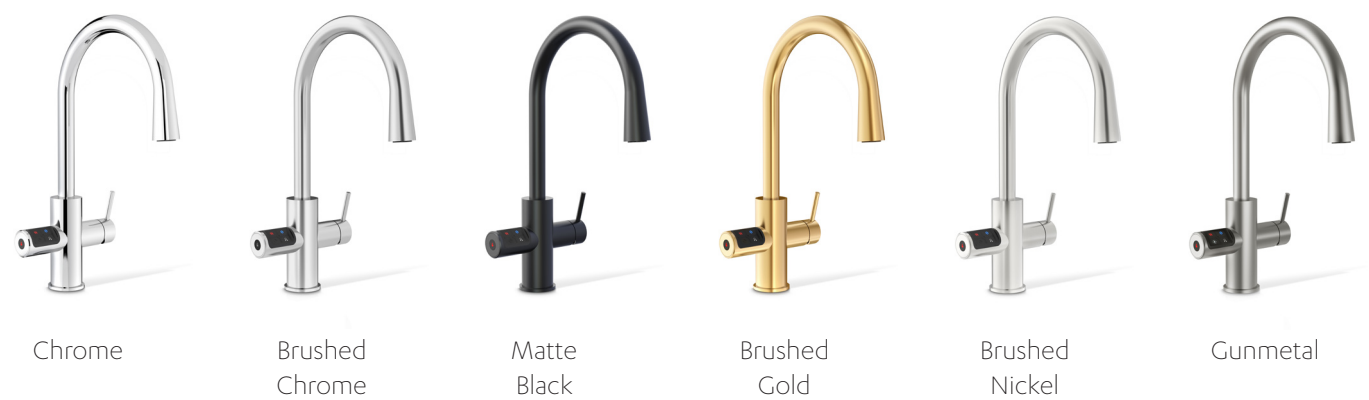
HydroTap Celsius Plus All-in-One (AIO)

Special Order Only (90 day lead time)

Form meets function with the HydroTap Celsius Plus All-in-One (AIO). Intended for installation over a sink in the kitchen or wet bar, the Celsius Plus AIO instantly dispenses filtered boiling and chilled water, plus unfiltered hot & cold water. And it's all wrapped up in an enduringly stylish design.

So whether you are looking to upgrade your home hydration or you want the convenience of cooking made easy, the HydroTap Celsius Plus AIO is the perfect tap to meet your needs. The Celsius Plus AIO is available in six luxury finishes from our classic chrome to our stylish brushed gold and gunmetal to complement any kitchen or wet bar.

HydroTap Celsius Plus All-in-One - Available Finishes



Product Order Codes for HydroTap Celsius Plus AIO Tap/Faucet (select one)

HydroTap Celsius Plus AIO BC Tap/Faucet in Chrome	01045838
HydroTap Celsius Plus AIO BC Tap/Faucet in Brushed Chrome	01045839
HydroTap Celsius Plus AIO BC Tap/Faucet in Matte Black	01045840
HydroTap Celsius Plus AIO BC Tap/Faucet in Brushed Gold	01045841
HydroTap Celsius Plus AIO BC Tap/Faucet in Brushed Nickel	01045842
HydroTap Celsius Plus AIO BC Tap/Faucet in Gunmetal	01045843

Product Order Code for HydroTap BC 120V Command Center

HydroTap BC 120V Command Center	01043465
---------------------------------	----------

HydroTap Celsius Plus All-in-One (AIO)

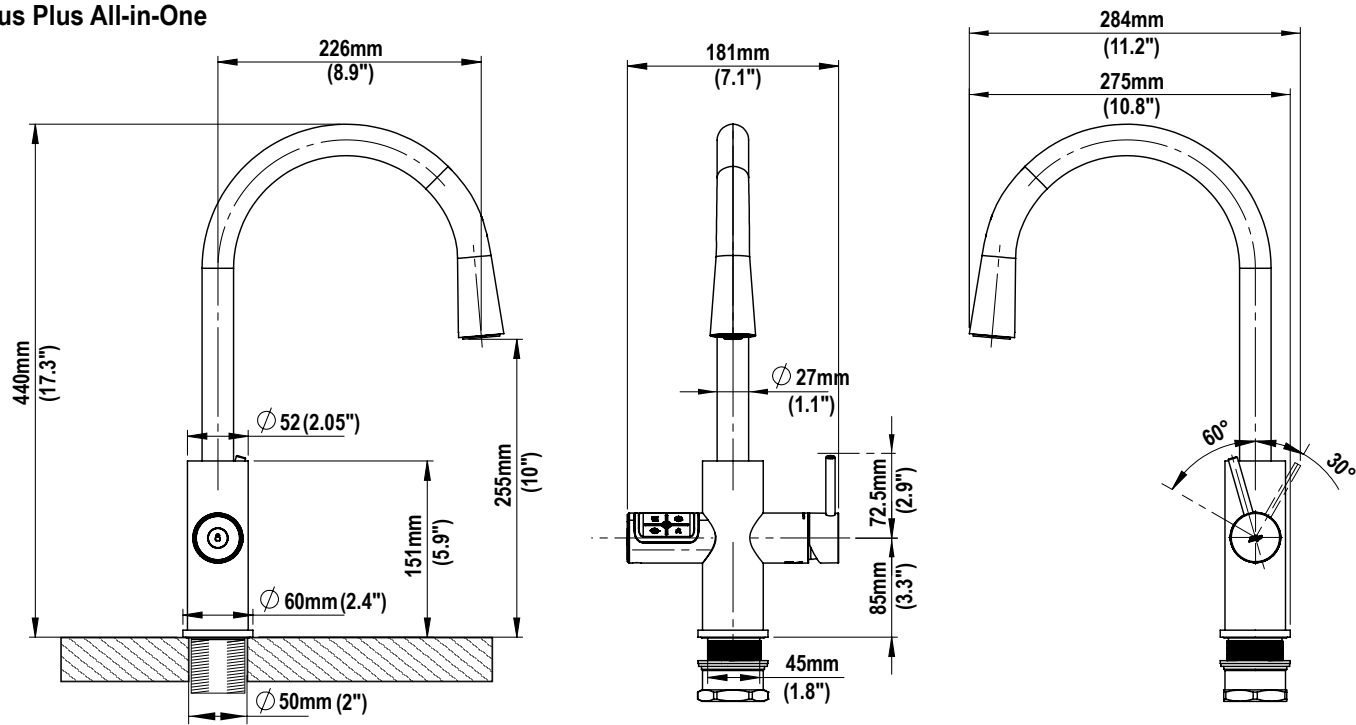
Boiling/Chilled (BC) Product Spec Sheet



HydroTap Celsius Plus AIO BC 120V - Tap/Faucet Technical Specs

Style:	HydroTap Celsius Plus All-in-One (AIO) BC 120V
Hole Size:	2" / 50mm
Tap Height:	17.3" / 440mm
Installation:	Over the sink as the primary faucet
Flow Rate:	Max 1.8gpm / 6.81 lpm
Sparkling Water Flow Rate	0.4 gpm / 1.51 lpm
Mixer Type:	Ceramic disc cartridge
Water outlets:	Installation requires both hot and cold water supplies
Clearance for handle:	Minimum distance from center hole to wall: 3 7/16" (88mm)

Celsius Plus All-in-One



HydroTap Celsius Plus All-in-One (AIO)

Boiling/Chilled (BC) 120V Product Spec Sheet



HydroTap Celsius Plus AIO BC 120V - Command Center Technical Specs

Style:	HydroTap Celsius Plus All-in-One BC 120V
Water outlets:	Installation requires both hot and cold water supplies
Water Pressure:	Min 37psi – Max 100psi (2.60 - 7.03kg/cm ²) with a minimum flow rate of 1 gpm (3.79lpm)
Water Connection:	2 x 1/2" BSP or 3/8" FPT compression (depending on manufacture date) with shut off valve is required within 3' (0.9m) of the installation
Integral Water Values:	All HydroTap systems are fitted with a Dual Check Valve and a 50psi (3.52kg/cm ²) Pressure Limiting Valve
Water Supply Requirements:	Potable drinking water supply
Optimal Total Dissolved Solids (TDS) Range:	TDS Min 50ppm – Max 150ppm
Integral Water Filter:	0.2 micron, 1 size - replace every 1,100 gallons / 4,163 liters or 12 months
Power Rating:	110-120V, 50-60Hz, 15 amp power supply with a NEMA 5-15 outlet
Command Center Dimensions (WxDxH):	13.3" x 18.2" x 13.1" / 339mm x 462mm x 333mm
Minimum Air Gap:	Minimum of 2" / 50mm clearance on left and right side and 8" / 200mm above
Minimum Cabinet Size (Without Garbage Disposal):	20" wide x 24" deep / 508mm wide x 610mm deep
Minimum Cabinet Size (With Garbage Disposal):	30" wide x 24" deep / 762 mm wide x 610mm deep When installing the HydroTap Celsius All-in-One BC 120V in a cabinet with a garbage disposal, the cabinet must be at least 30" wide x 24" deep and the sink must have an off-centered drain to allow for the placement of the garbage disposal off to one side and the command center to the other.
Maximum Hose Connection Length	3' / 0.9m (tap to command center)
Minimum Distance Needed for Installation	15" / 381mm (interior wall to garbage disposal)
Warranty:	3 years (2 year Limited Warranty plus additional 1 year available on product registration)

HydroTap Celsius Plus All-in-One (AIO)

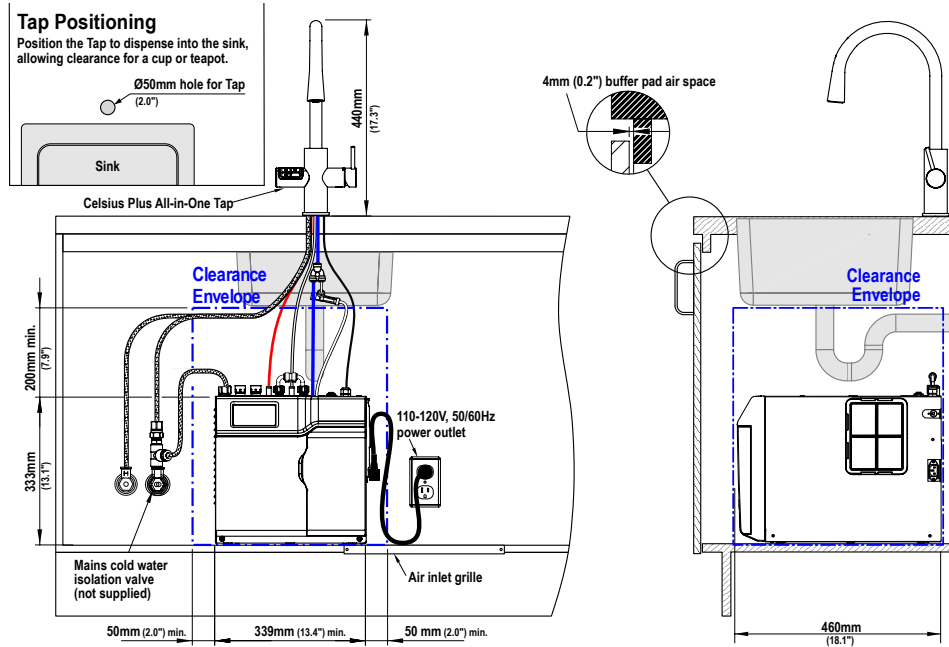
Boiling/Chilled (BC) 120V Product Spec Sheet



Installation Requirements

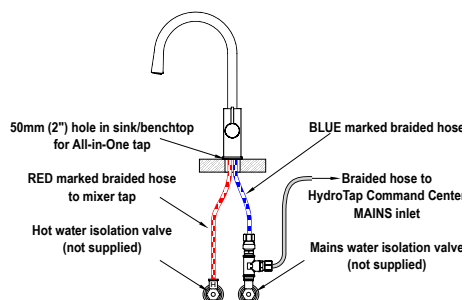
The HydroTap is a pump-driven system so the installation of the Tap must be within 3' (0.9m) of the base command center. Installation on most countertops is straightforward however, some stone countertops may require a specialized cutting service.

Installation and connection of your HydroTap must be carried out by a qualified person, observing all local, state, & federal regulations.



Mains hot water supply installation

Hot and cold water supply required

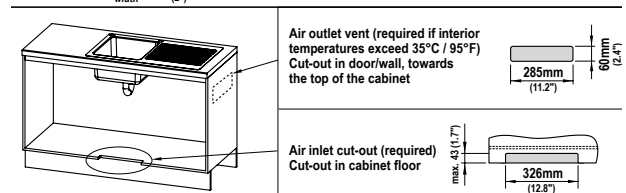
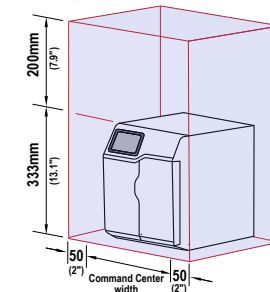


Ventilation requirements

Contact your local service provider if ventilation is not suitable

Clearance envelope

Position the Faucet and the Command Center as close together as possible.



Please call 1-833-233-2358 M-F 8am-7pm Central Time with questions.