

The Savant AMP-2000 Quick Reference Guide provides all the steps necessary to install the 16-channel AMP-2000 amplifier. This guide supports the following units:  
AMP-2000-00 (North America)  
AMP-2000I-00 (International)  
Note: The AMP-2000/2000I will be referred to as the AMP-2000 unless otherwise specified.

### Box Contents

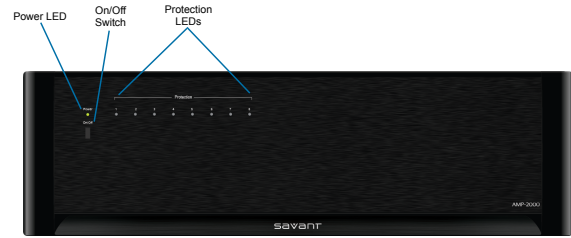
- (1) AMP-2000-00 or
- (1) AMP-2000I-00
- (2) Rack Mounting Bracket (071-0687-xx)
- (4) 12mm Pan Head Phillips screws for brackets (039-0213-xx)
- (4) Rubber Chassis Feet (093-0351-xx)
- (8) 8mm Pan Phillips screws (039-0167-xx)
- (8) Audio connectors (026-0426-xx)
- (1) Audio Trigger cable (064-0294-xx)
- (1) Power cord C13 (6 feet) (N. America) (064-0079-xx) or appropriate international power cord
- (1) Quick Reference Guide (this document)



### Specifications

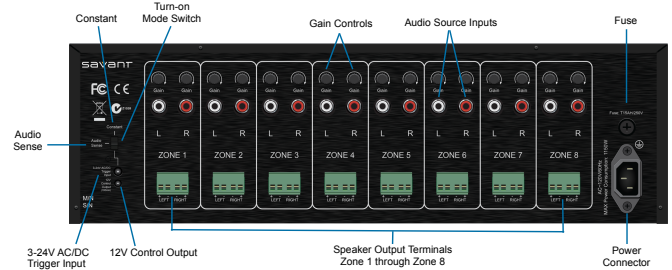
Environmental	
Temperature	32° to 104° F (0° to 40° C)
Humidity	10% to 80% Relative Humidity (non-condensing)
Cooling	202 cubic feet per minute (CFM) recommended
BTUs	3925 BTUs per hour at maximum load
Dimensions and Weight	
Height	5.21 in/13.23 cm
Width	17.30 in/43.94 cm
Depth	15.00 in/38.20 cm
Weight	44 lb/19.5 kg (shipping weight)
Power	
Input Power	120V AC, 60 Hz, 10A - Model AMP-2000-00 (N. America) 230V AC, 50 Hz, 5A - Model AMP-2000I-00 (International)
Maximum Power	1150 watts
Rated Current Draw	10A
Fuse Rating	T15AH/250V (120V AREA) (N. America) T8AL/250V (230V AREA) (International)
Power Connection	IEC 320 power connector with 3-pole detachable power cord
Operating Parameters	
Rated Power	40 WPC at 8 ohms, 50 WPC at 4 ohms; (0.1% THD+N, 1kHz)
Input Impedance	33k ohms
Input Sensitivity	750mV for 40W at 8 ohms
Overall Voltage Gain	27.5 dB
Frequency Response	Bandwidth limited from 20Hz to 20kHz + 0.8 dB
Distortion, THD+N	< 0.07% THD+N from 20Hz to 20kHz, All channels driven at 8 ohms
Signal-to-Noise Ratio	>90 dB
Input Triggers	3 - 24V AC/DC (5 mA)
Output Triggers	12V DC (100mA)
Compliance	
Safety and Emissions	IEC 60065   FCC Part 15   CE   C-Tick
RoHS	Compliant

### Front Panel

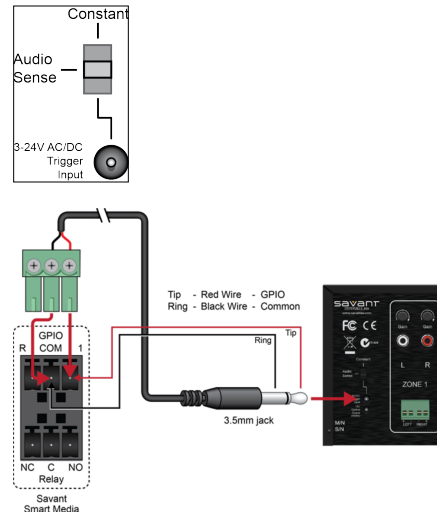


Power LED	Green indicates the system has adequate power and is operating normally. Red indicates the system is in stand-by mode. In standby most of the Controller circuitry is powered down. Off indicates that the system is getting no power.
On/Off Switch	The master power switch. This button will turn off all circuitry, including the sensing circuitry.
Protection Mode LEDs (8 zones)	Central potential protection mode (LED indication). The central potential protection mode is the only mode that activates the Protection LEDs on the front panel. This mode is more commonly known as the <b>DC potential protection mode</b> and is designed to protect the connected speakers from any DC voltage that is output from the AMP-2000. When the central potential protection mode is activated, the LED for that respective channel will become Red. When a channel is in the central potential protection mode, other active channels will remain operational unless they are in a protection mode. After the fault is fixed, the AMP-2000 will automatically restart the disabled zone/channel.  Speaker short protection mode (no LED indication). This mode will disable a zone/channel until the fault is fixed. After the fault is fixed, the AMP-2000 will automatically restart the disabled zone/channel.  Overload protection mode (no LED indication).

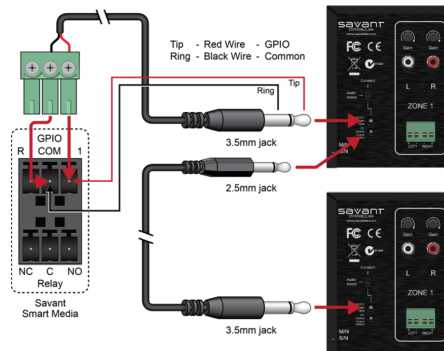
### Rear Panel



### 3-24 AC-DC Voltage Trigger (External)



## External Trigger Connection Diagram



## External Trigger Connection Diagram - Daisy Chained

**Caution:** Do not use a DC wall adapter. The long discharge time of the DC adapter's filter capacitor will delay the turn-off of the amplifier.

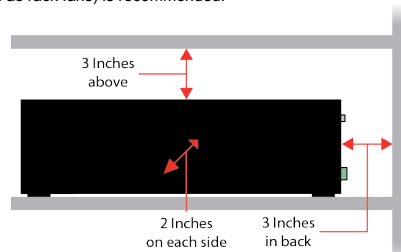
**Note:** When connecting the first AMP trigger, the 2.5mm jack connector will need to be cut off. Strip the cable's outer jacket to expose the two leads. Connect as shown in the above diagram to the appropriate Savant controller port.

## Installation

The AMP-2000 should be placed on a solid flat surface such as a table or shelf or in an audio/video equipment rack. It should be placed upright so that its weight rests on the unit's four feet (removable).

## Ventilation

The AMP-2000 must be provided with adequate ventilation for proper cooling. When installing the AMP-2000 in a cabinet, be sure that the rear of the cabinet is open to adequate air to provide proper cooling. Be sure to leave a minimum of 3 inches clearance above and behind the amplifier and at least 2 inches on each side. If installed in a rack, active thermal management (such as rack fans) is recommended.



**CAUTION:** Do not block the ventilation holes on the sides and bottom of the AMP-2000.

## Speaker Connectivity

When designing your system specify four to eight ohm speakers.

## Cable and Wire

The AMP-2000 has multiple connections on the back panel. Savant recommends that you clearly label all the input cables and speaker wires. Label the cables and wires with their destination or source, rather than which terminal of the AMP-2000 they are connected to; it will be easier to reconfigure your system in the future.

The AMP-2000 connects to your Savant multi-room audio solution via shielded line level audio cables with RCA phonograph plugs. Use high quality RCA cables to connect the multi-room audio to the amplifier inputs.

The AMP-2000 connects to your speakers using 2-conductor speaker wire. For most applications, Savant recommends using 16 or 18 gauge wire. For wiring runs longer than 80 feet, Savant recommends using 14-gauge wire. Each channel features a removable screw terminal speaker connection for easy installation in tight spaces. The terminal connector can accommodate up to 14-gauge stranded speaker wire.

## Speaker Wire Connections

- Caution:** All speaker wire connections must be made with the amplifier off.
- Caution:** Do not allow a single strand of wire to touch the amplifier chassis or another connector.
- Caution:** The amplifier must be off whenever you make changes to the input connections.
- Caution:** Remember never connect a source or preamplifier's input to the inputs of the AMP-2000 directly.

**Bare Speaker Wire** – Split the speaker wire insulation so that at least two inches of each conductor are separated. Strip 1/4 inch of insulation from the end of each conductor of the speaker wire. Twist the strands of speaker wire together and insert them into the appropriate screw terminal speaker connection.

## Line Level Source Inputs

Savant recommends labeling all of the interconnecting cables to the sources they connect to (for example, CD players). Use quality audio patch cables with RCA phonograph plugs attached to the ends. Connect the sources by inserting the RCA plug into the amplifier's RCA jacks. Connect the outputs from your sources to the inputs on the amplifier.

## AC Power Plug Connection

The last connection made should be the AC power using a standard IEC 3-pole detachable power cord. Plug the attached power plug into a correctly grounded 120V/60 Hz (AMP-2000-00) or 230V/50 Hz (AMP-2000I-00) wall outlets.

## Cleaning and Maintenance

The internal parts of the AMP-2000 are electronic and require no maintenance. Once a year it is appropriate to twist the RCA connectors on each input to remove any oxidation and improve conductivity. You should clean with a dry cloth only. Do not use any spray-type, abrasive cleaners on the amplifier.

## Additional Documentation

Additional Documentation is available at: [SavantSystems.com](http://SavantSystems.com)

Knowledge Base > Savant Hardware > Speakers & Amplifiers > Amplifiers