

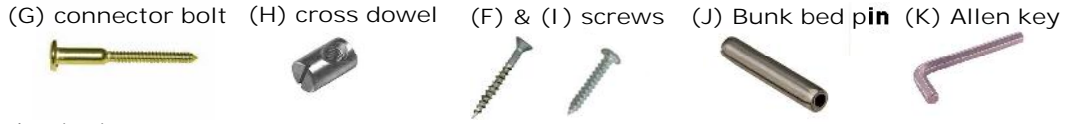
Mission and Shaker Style Bunkbed Assembly Instructions

Contents: sizes vary depending on model ordered

- (A) = 2 lower bunk bed ends (36" or 44" tall)
- (B) = 2 top bunk bed ends (29" tall)
- (C) = 2 bed rails per bed (75" or 80" long)
- (D) = 1 rear guard rail (75-7/8" or 80-7/8" long) and 1 front guardrail (54" long)
- (E) = 9 slats per bed (twin = 40-1/4", double = 55-1/4" queen = 61-1/4" long)
- (F) = 4 wood screws, round head
- (G) = 8 connector bolts per bed (70mm long)
- (H) = 8 cross dowels per bed
- (I) = 18 wood screws, flat head, per bed
- (J) = 4 bunk bed pins
- (K) = 1 Allen key
- (L) = 1 Ladder

Tools required:

- Slotted screwdriver
- #2 Robertson or Phillips screwdriver



Please read all instructions before beginning

1. Assemble the lower bed using 2 bed rails (C), 2 lower bunkbed ends (A) and 8 connector bolts (G) with 8 cross dowels (H). Refer to "Figure 1" for correct position of bed rail, bed end and hardware.
 - a. Optional Loft version: 1 bed rail and 9 slats are to be omitted from lower bed assembly
2. Assemble top bed using 2 bed rails (C), 2 top bunkbed ends (B), 1 rear guardrail (D) and 8 connector bolts (G) with 8 cross dowels (H). Refer to "Figure 2" for correct position of bed rail, bed end and hardware. Before tightening the bolts, insert the rear guardrail into the slots in the bed ends. Finish tightening the bolts.
3. Insert 4 bunkbed pins (J) into the predrilled holes of the lower bunk bed ends. Place the top bed assembly onto the lower bed assembly ensuring the bunk bed pins are captured in the predrilled holes in the top bunk bed ends.
4. For each bed assembly slide 9 slats (E) into the bed rail grooves and secure each slat with 2 wood screws (I) using predrilled holes, refer to "Figure 3". Position 1 slat 3" from each bunk bed end and 7 evenly spaced in between. Ensure that the spaces between slats are less than 3 1/2".
5. Slide the front guard rail onto top bunk bed rail.
6. Add the ladder.
7. If desired the front guard rail and the ladder can be secured using wood screws (F).

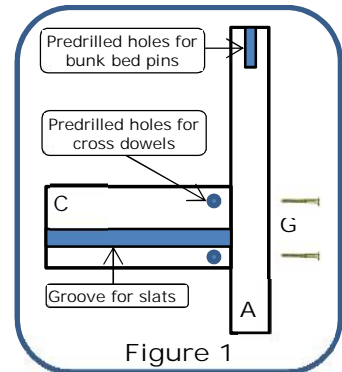
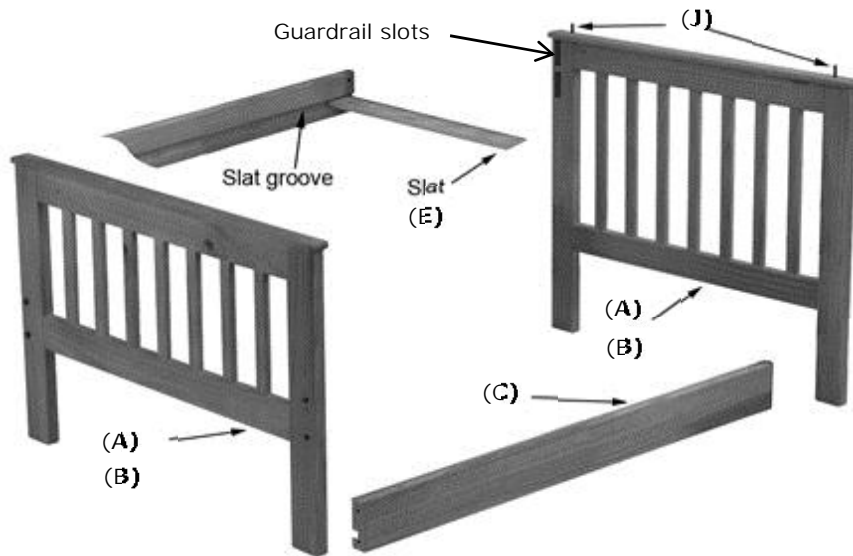


Figure 1

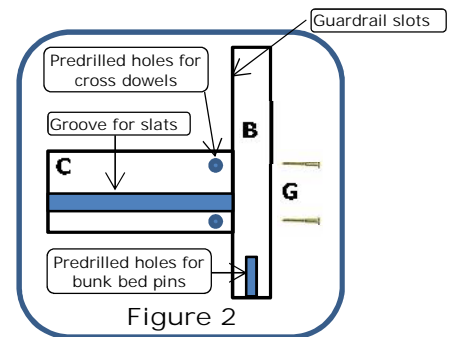


Figure 2

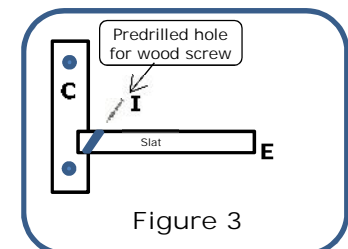


Figure 3

Important Safety Tips:

- Children under 6 years of age should not use the top bed.
- Teach children that rough play on bunk beds is dangerous.
- Use provided ladders or stairs to climb in and out of the top bed.
- Do not tie anything to the bunk bed, such as cords and ropes.
- Keep guardrails in place.
- Check that all hardware is properly secured twice a year.

