



007-013, 020, 022, 030, 050



PLATINUM
OAK FINISH



ILLUMINATED
LED SHELVES



LIFT-TOP OPTION



EXTRA
STORAGE

OCCASIONAL OPTIONS

Fixed or lift-top cocktail table
Square or oval end table
60" or 80" entertainment units

MATERIAL

Oak veneer over engineered wood
Mindi solids throughout
Glass top end tables
Brass hardware

FEATURES

Lift-top on cocktail table
Illuminated glass on 80"
TV back panel

DRAWER SPECS

Premium ball-bearing side glides
English dovetail joints
Fully finished drawers
Self-closing drawers
Bar pulls
11lb Drawer weight capacity (<20" wide)
22lb Drawer weight capacity (>20" wide)

FINISH

Platinum Oak finish
Burnished Brass
hardware



**060 rectangular
cocktail table**
46 x 27 x 18"
117 x 69 x 46 cm



**050 rectangular lift-top
cocktail table**
46 x 27 x 18"
117 x 69 x 46 cm



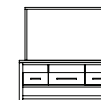
**020 glass top square
end table**
24 x 24 x 25"
61 x 61 x 64 cm



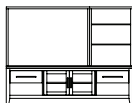
**022 chair side table,
1 drawer**
16 x 24 x 25"
41 x 61 x 64 cm
DD: 15" / 38 cm



**030 glass top oval end
table**
24 x 19 x 25"
61 x 48 x 64 cm



**012 60" entertainment
tv stand, 3 drawer**
60 x 19 x 28"
152 x 48 x 71 cm
DD: 15" / 38 cm



**013 80" entertainment
tv stand, 2 drawer, 2 door**
80 x 19 x 24"
203 x 48 x 61 cm
DD: 15" / 38 cm

**007 80" back panel for
entertainment tv stand**
80 x 11 x 38"
203 x 28 x 97 cm

**006 60" back panel for
entertainment tv stand**
60 x 3 x 34"
152 x 8 x 86 cm

Dimensions shown as Width x Depth x Height.

Dimensions are correct at time of printing and are subject to change without notice. Actual dimensions for each item may vary from what is shown here. Please allow +/- 1" difference.

DD = Drawer Depth

Place felt pads under items that can scratch or stain. Wipe up spills immediately with a dry cloth. Clean with a damp cloth and avoid strong cleaning solutions.

Pull out one drawer at a time. Do not sit or stand on tables.

Availability may vary by region.



540-542-545, 431, 436, 457, 401

PLATINUM
OAK FINISHSILVER LINING
UPHOLSTERYINSIDE-CABINET
LIGHTING

USB PORTS

BEDROOM OPTIONS

Panel or upholstered style bed
King or queen size bed
Optional bed storage drawers
Nightstand extensions
One or two drawer nightstand

MATERIAL

Oak veneer over engineered wood
Mindi solids throughout
Brass hardware
100% Polyester

FEATURES

USB ports on nightstand and
secretary desk
Back-lit recharging ports
LED lighting on nightstand and
spread beds
Removable felt-liner in top drawer
of dresser
Interior lighting on door chest

BED SPECS

Mattress only required
14 slats, 1 center slat,
4 center leg supports

DRAWER SPECS

Premium ball-bearing side glides
English dovetail joints
Fully finished drawers
Self-closing drawers
Removable felt liners in top drawer
6" and 15" bar pulls
11lb Drawer weight capacity (<20" wide)
22lb Drawer weight capacity (>20" wide)

FINISH

Platinum oak finish
Burnished brass
hardware
Silver lining upholstery



120 desk chair
20 x 23 x 40"
51 x 58 x 102 cm



401 mirror
46 x 2 x 38"
117 x 5 x 97 cm



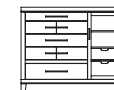
**430 nightstand w/
night light and USB,
1 drawer**
28 x 19 x 26"
71 x 48 x 66 cm
DD: 15" / 38 cm



**432 nightstand,
2 drawer**
28 x 19 x 26"
71 x 48 x 66 cm
DD: 15" / 38 cm



**436 chest,
6 drawer**
40 x 19 x 54"
102 x 48 x 137 cm
DD: 15" / 38 cm



**438 door chest w/interior
lighting, 7 drawer, 1 door**
60 x 19 x 49"
152 x 48 x 124 cm
DD: 15" / 38 cm



448 secretary desk
48 x 21 x 39"
122 x 53 x 99 cm
DD: 15" / 38 cm



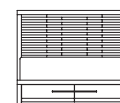
**457 dresser,
7 drawer**
66 x 19 x 36"
168 x 48 x 91 cm
DD: 15" / 38 cm



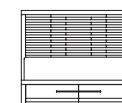
**540-541-545 queen wood
panel bed**
72-90 x 40 x 30"
183-229 x 102 x 76 cm



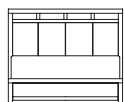
**550-551-545 king
wood panel bed**
36-54 x 54 x 35"
91-137 x 137 x 89 cm



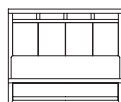
**540-542-545 queen wood
panel storage bed, 2
drawer**
72-90 x 40 x 30"
183-229 x 102 x 76 cm
DD: 15" / 38 cm



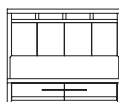
**550-552-545 king wood
panel storage bed,
2 drawer**
36-54 x 54 x 35"
91-137 x 137 x 89 cm
DD: 15" / 38 cm



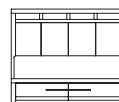
**560-541-545 queen
upholstered panel bed**
78 x 49 x 30"
198 x 124 x 76 cm



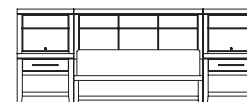
**570-551-545 king
upholstered panel bed**
54 x 54 x 35"
137 x 137 x 76 cm



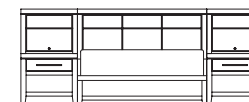
**560-542-545 queen
upholstered panel storage
bed, 2 drawer**
78 x 49 x 30"
198 x 124 x 76 cm
DD: 15" / 38 cm



**570-552-545 king
upholstered panel storage
bed, 2 drawer**
54 x 54 x 35"
137 x 137 x 76 cm
DD: 15" / 38 cm



**600-541-545-607-430 queen
wood panel nightstand
extension bed, 2 drawer**
62 x 14 x 36"
157 x 36 x 91 cm
DD: 15" / 38 cm



**610-551-545-607-430 king
panel nightstand extension
bed, 2 drawer**
62 x 14 x 36"
157 x 36 x 91 cm
DD: 15" / 38 cm

Dimensions shown as Width x Depth x Height.

Dimensions are correct at time of printing and are subject to change without notice. Actual dimensions for each item may vary from what is shown here. Please allow +/- 1" difference.

DD = Drawer Depth

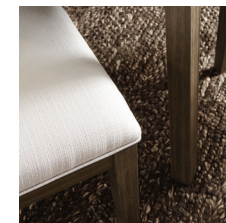
Place felt pads under items that can scratch or stain. Wipe up spills immediately with a dry cloth. Clean with a damp cloth and avoid strong cleaning solutions.

Pull out one drawer at a time to prevent tipping. Install anti-tipping harness on the 6-drawer chest.

Availability may vary by region.



154, 124, 178, 196

PLATINUM
OAK FINISHSILVER LINING
UPHOLSTERYBUILT-IN
EXTENSIONSEXTRA
STORAGE

DINING OPTIONS

Dining or café style table
Fixed or extension top dining and
café tables
Slat or upholstered back chair

MATERIAL

Oak veneer over engineered wood
Mindi solids throughout
Glass on bar unit
Custom designed brass hardware

FEATURES

Extension tables
Wine storage and interior
lighting in bar unit

DRAWER SPECS

Premium ball-bearing side glides
English dovetail joints
Fully finished drawers
Self-closing drawers
Bar pulls
11lb Drawer weight capacity (<20" wide)
22lb Drawer weight capacity (>20" wide)

FINISH

Platinum Oak finish
Burnished brass hardware
Silver upholstery



122 slat back dining chair
20 x 23 x 35"
51 x 58 x 76 cm



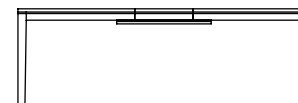
124 upholstered back dining chair
20 x 23 x 35"
51 x 58 x 76 cm



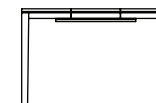
140 slat back café chair
20 x 22 x 37"
51 x 56 x 94 cm



142 dining café stool
16 x 16 x 24"
41 x 41 x 61 cm



150 dining table w/extensions
72-90 x 40 x 30"
183-229 x 102 x 76 cm



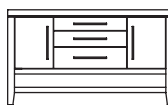
160 café table w/extensions
36-54 x 54 x 35"
91-137 x 137 x 89 cm



154 fixed top dining table
78 x 40 x 30"
198 x 102 x 76 cm



164 fixed top café table
54 x 54 x 35"
137 x 137 x 76 cm



178 sideboard, 3 drawer, 2 door
62 x 19 x 36"
157 x 48 x 91 cm
DD: 15" / 38 cm



196 bar unit w/interior lighting, 3 drawer, 2 door
42 x 19 x 52"
107 x 48 x 132 cm
DD: 15" / 38 cm



197 console, 3 drawer (comes w/two café stools)
62 x 14 x 36"
157 x 36 x 91 cm
DD: 15" / 38 cm

Dimensions shown as Width x Depth x Height.

Dimensions are correct at time of printing and are subject to change without notice. Actual dimensions for each item may vary from what is shown here. Please allow +/- 1" difference.

DD = Drawer Depth

Place felt pads under items that can scratch or stain. Wipe up spills immediately with a dry cloth. Clean with a damp cloth and avoid strong cleaning solutions.

Pull out one drawer at a time to prevent tipping. Do not sit or stand on tables.

Availability may vary by region.