

IMPORTANT NOTE:

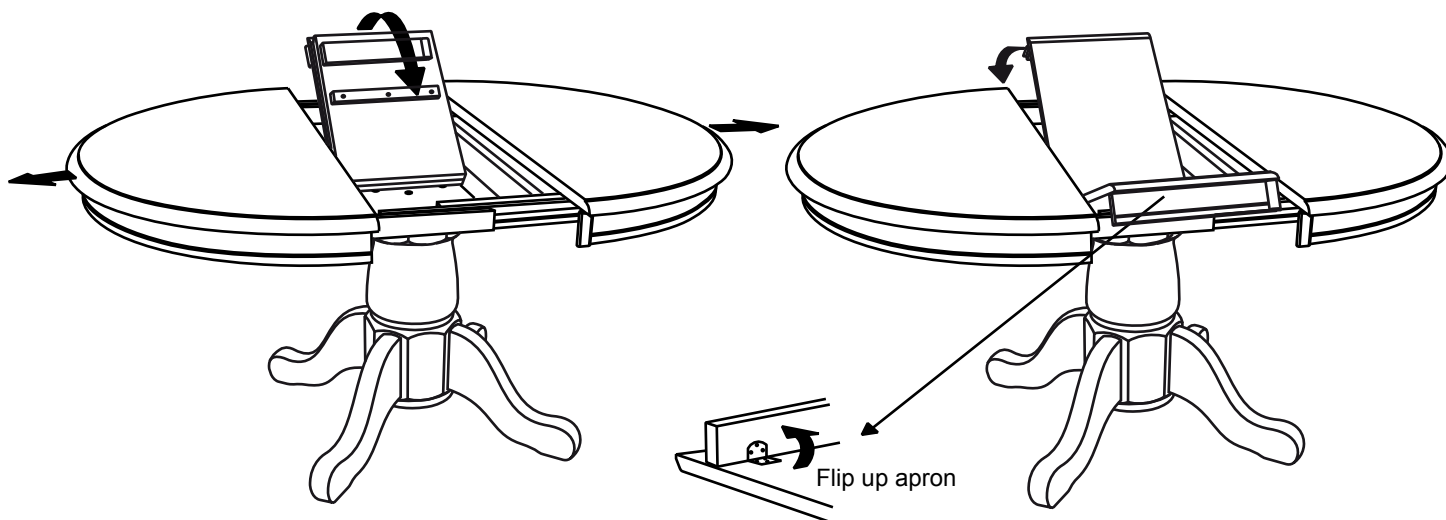
~ Storing and opening the leaf requires 2 people.

Assembly Instructions

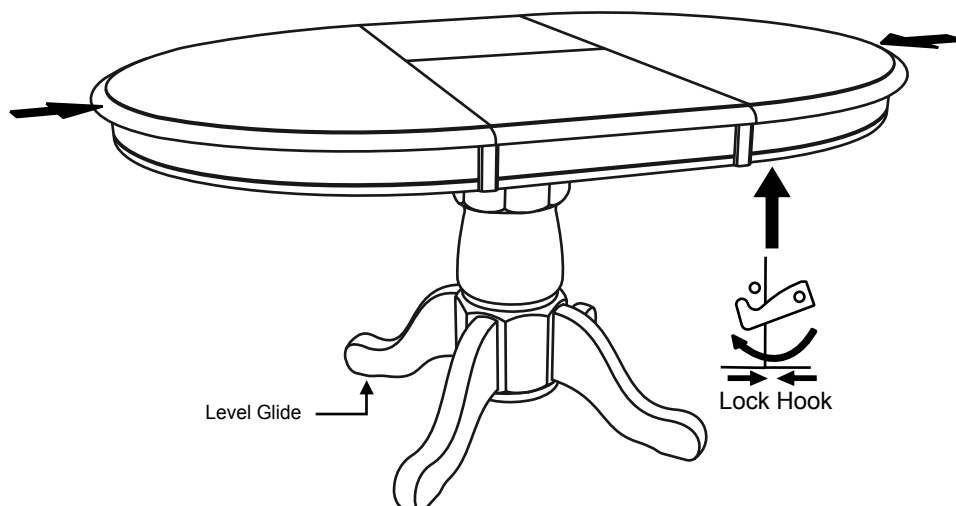
DQ14257 / DB54257
57" PED TABLE W/15" BTRFLY

STEP 4

Lift both leaves from the compartment and flip up the aprons then unfold table leaf and place the leaf on the top surface carefully.

**STEP 5**

Push table top from both ends to close gap and lock the hooks underneath the table. Adjust the level glides until the table sits firmly.

**TO STORE THE CENTRE LEAF WHEN NOT IN USE**

Unlock the hooks underneath the table and pull the table top wide open equally from both ends. Flip down the aprons and fold the center leaf to store within the compartment. Push table top from both ends to close. Lock the hooks underneath the table.

