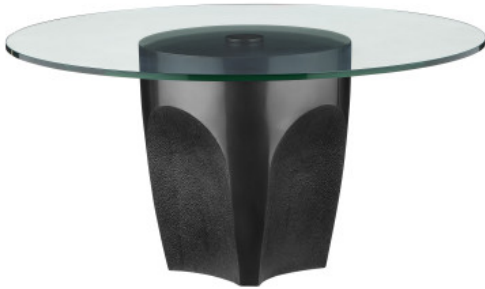


C U R R E Y

& C O M P A N Y



Lemy Black Cocktail Table

4000-0218

New

Overall: 17.75"h x 36"dia.

Finish: Black / Clear

Materials: Stainless Steel / Tempered Glass

Item Weight: 104 lbs.

The Lemy Black Cocktail Table is a mix master of shapes and textures. Made of stainless steel in a black finish, the cocktail table has textural indentions that look as if they have been carved out of the metal. The contemporary piece is topped with a tempered glass top.