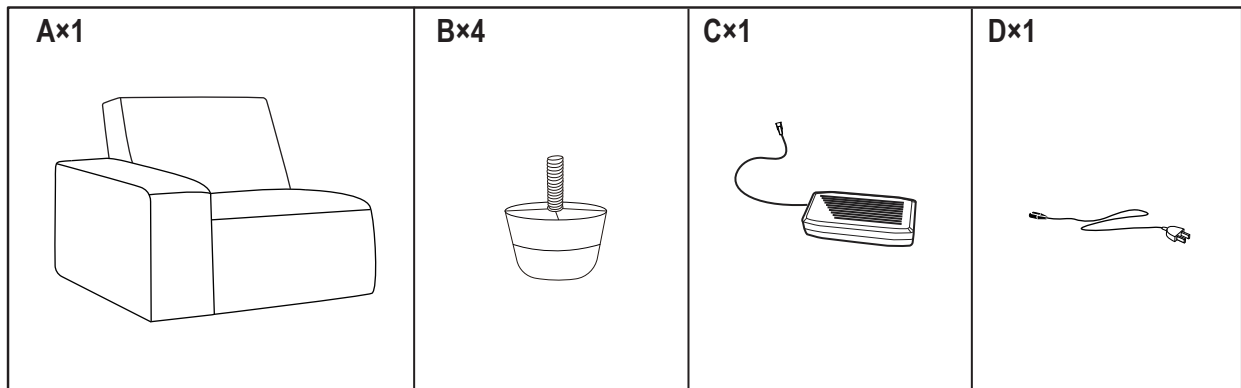
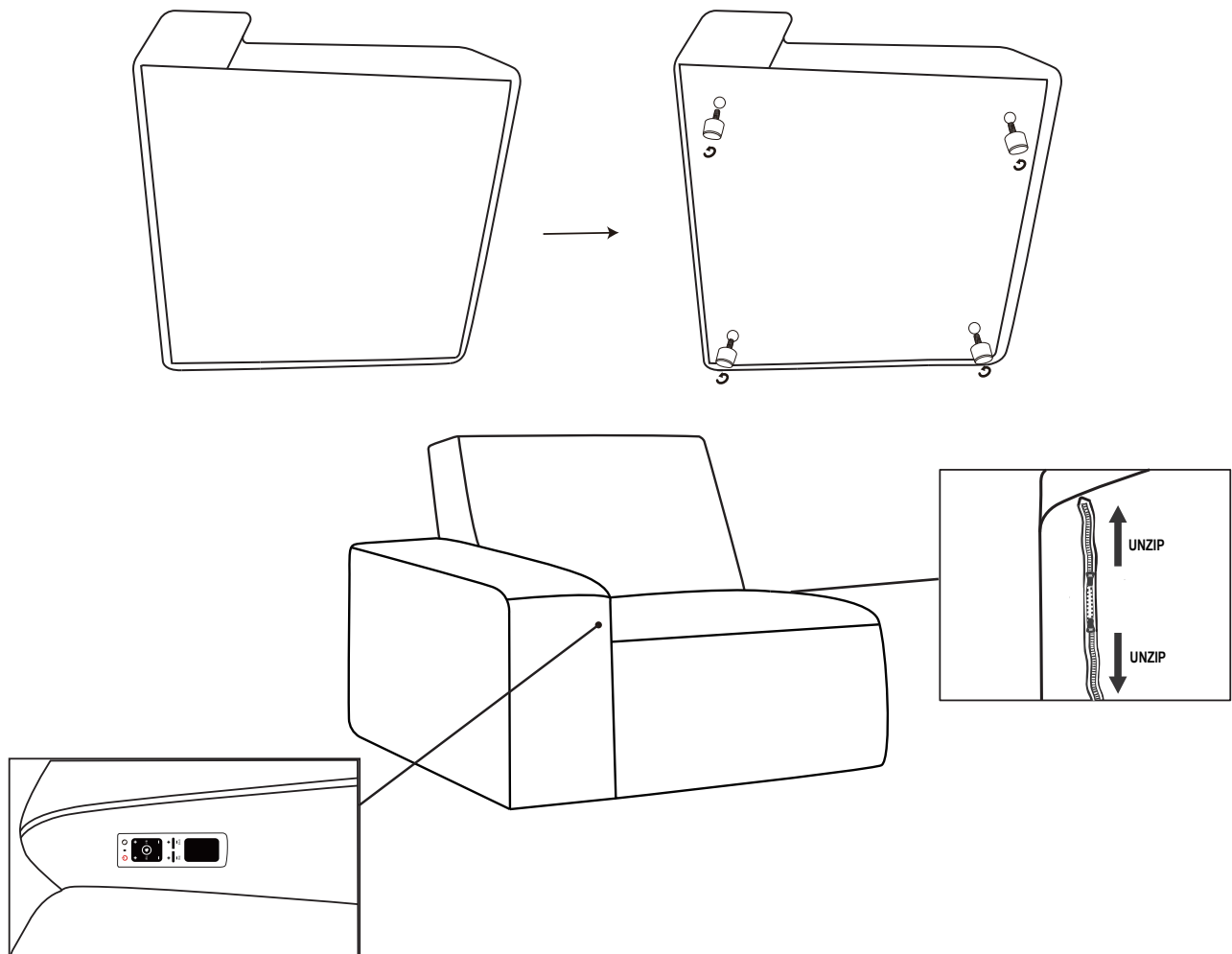


Thank you for purchasing this quality product. Be sure to check all packing material carefully for small parts that may have come loose inside the carton during shipment.

Make sure to read the instructions below before assembling your LAF Chair.



For the LAF Chair, the plastic legs can be found by following the red ribbon in side zipper of the LAF Chair. Remove and set aside to be used later.



The remote control can be magnetically attached to the Arm.

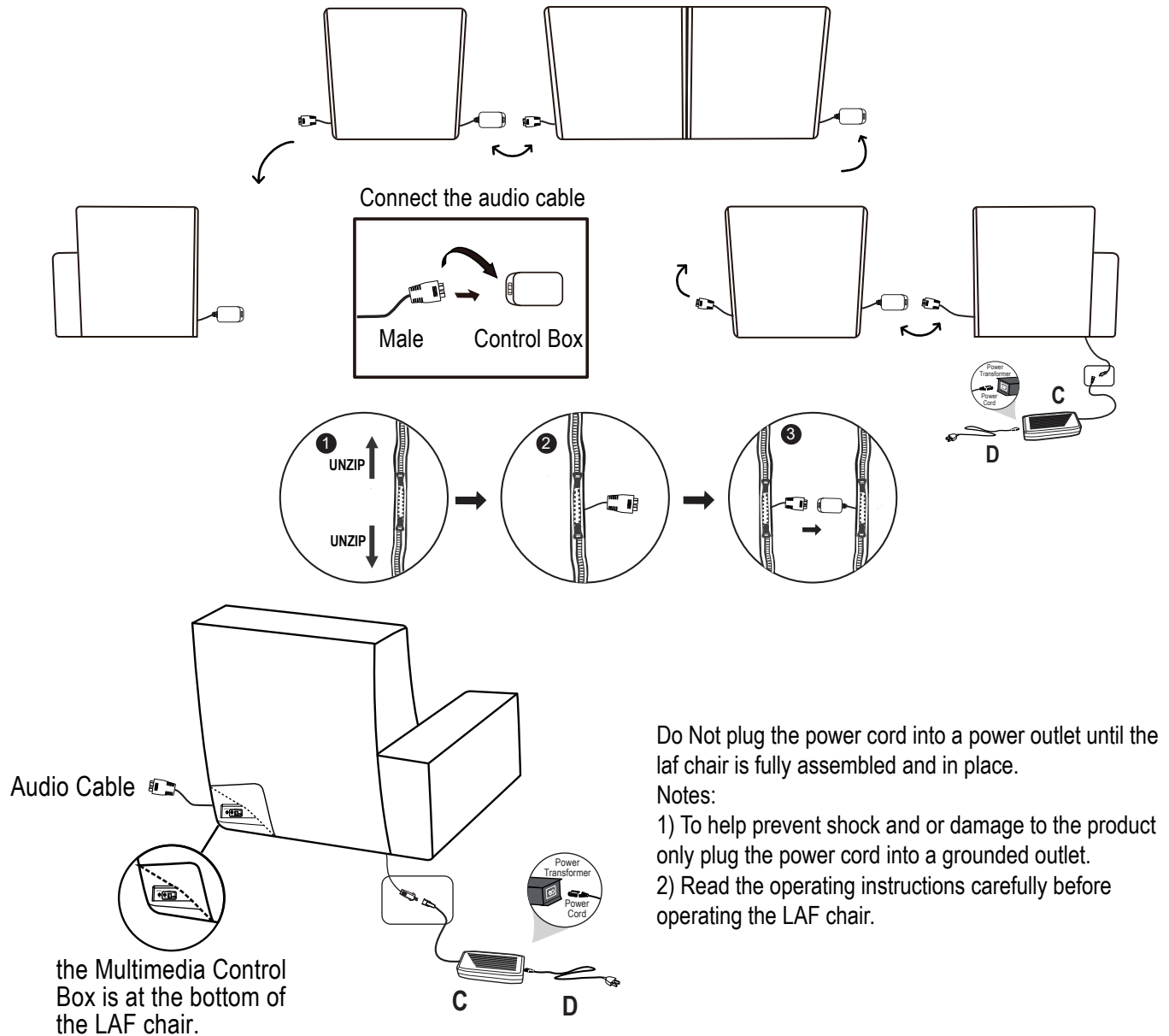
IMPORTANT NOTE

- To avoid any risk of suffocation to children or pets, dispose of all plastic bags immediately.
- To ensure proper performance, occasionally check for loose screws and tighten as needed.

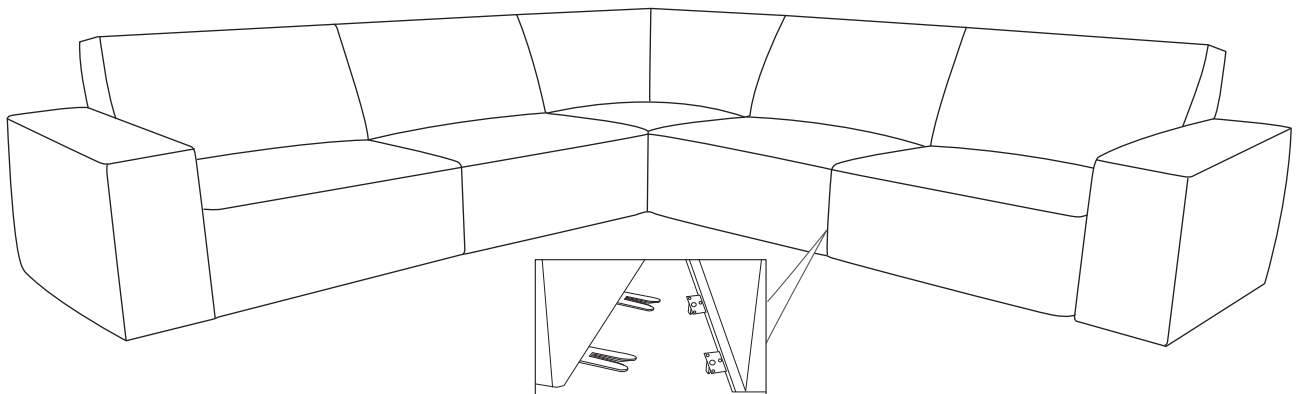
Attach the power cord to the power transformer. Attach the matching end of the power transformer to the matching connector found at the bottom rear of the LAF arm as seen in the illustration.

Unzip the side zipper, route the audio cable from the LAF Chair and connect it to the control box on the side.

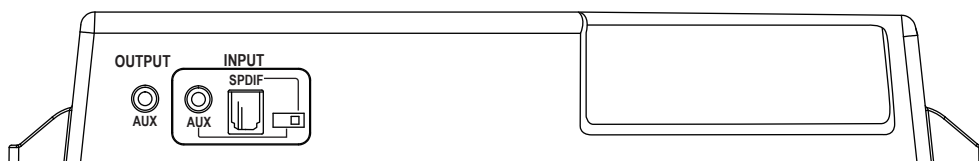
The wiring illustration for each position is for reference only for this style.



Once complete your product may look similar as the illustration below depending on the configuration purchased
You can connect two or more chairs by connecting each position with male and female buckle.

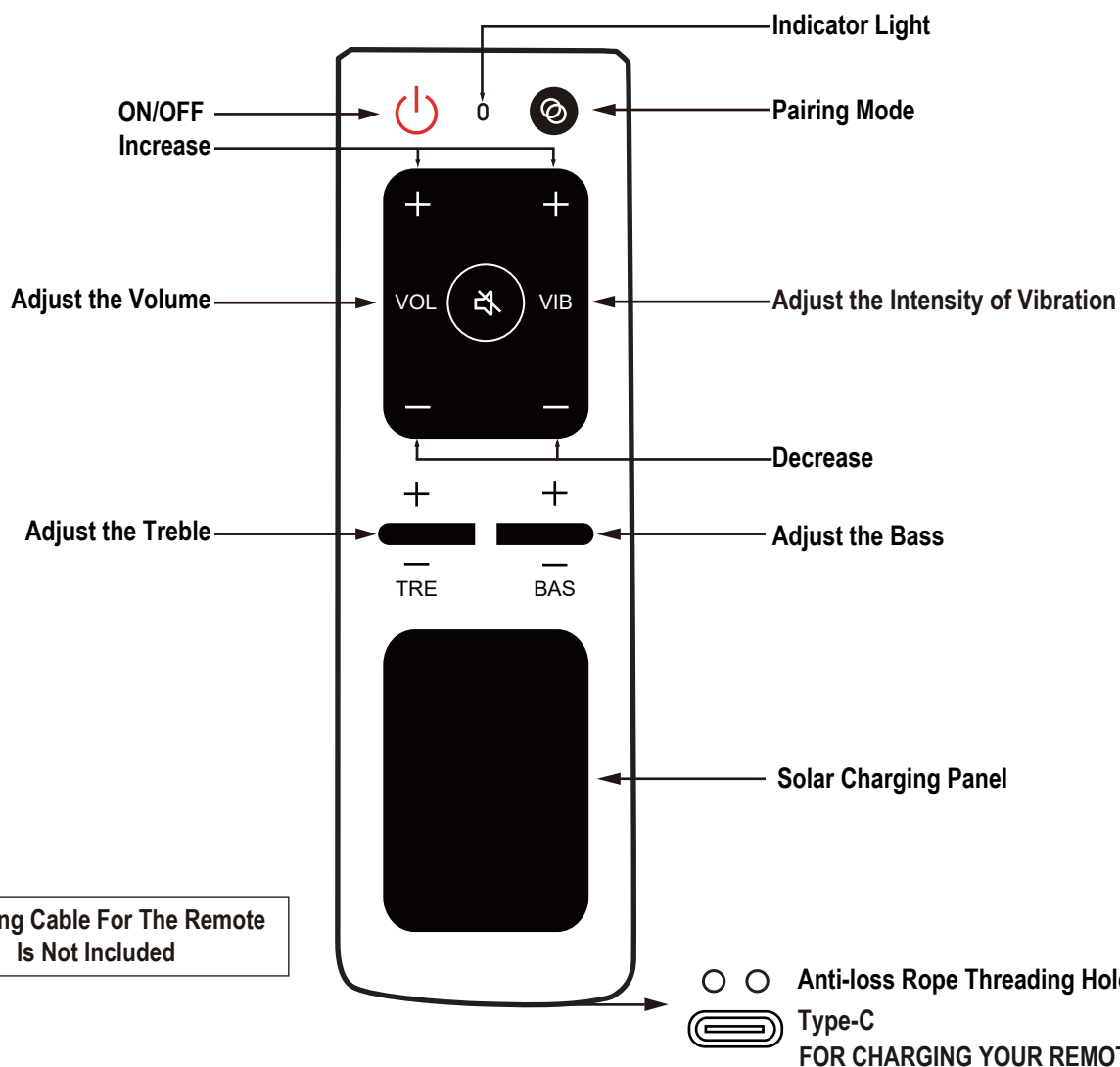


Multimedia Control Box



Flip the lever to the right to turn on the wireless connection function, and the AUX jack can connect the input devices. When the device such as a phone or TV is connected to the wireless function of Sofa A, Sofa A will act as the signal source, and Sofa B will sync to play the audio or video from Sofa A.

Flip the lever to the left to connect the fiber jack to a signal source, the source content will be played first. If your mobile phone is connected to the control box at this time, the mobile phone content will stop playing.



Charging Cable For The Remote
Is Not Included

HOW TO PAIR THE CHAIR WITH THE REMOTE CONTROL

Turn off the power of the chair first, and then press and hold the Pairing Mode button of the remote control for 15 seconds, until the indicator light dims, indicating that the remote control has entered the pairing state, and then reconnect the power of the chair, when the indicator light is on, it means that the chair and the remote control are successfully paired.

HOW TO CONNECT WIRELESS

When using the sound system, first turn on the power of the chair, press and hold the Pairing Mode button of the remote control for 3-5 seconds, when the blue signal light starts to flash, it means that the remote control has entered the pairing mode, and then use the mobile phone to search for the wireless connection named "MOTO Immersive Audio", click to pair, and the sound of "connected" will be emitted after connection; If you want to stop pairing, disconnect your phone or press and hold the Pairing Mode button again for 3-5 seconds, the blue signal light will stop flashing and disappear when pairing stops, and the voice prompt will be "Disconnected".

CONNECTING AND DISCONNECTING TO BROADCAST MODE

Double-click the Pairing Mode button to enter the broadcast mode, the chair will send out a prompt sound of "broadcast mode", indicating that the broadcast mode has been entered, at this time, the blue signal light will turn red, if you enter the broadcast mode when connecting to the wireless connection, the signal light will turn pink; If you want to exit broadcast mode, double-click the Pairing Mode button again and hear the "Broadcast off" prompt.

HOW TO ADJUST THE VOLUME, TREBLE, BASS, VIBRATION AND MUTE

There are a total of 10 levels of adjustment of the Volume/Bass/Treble/Vibrator button, once you start using it, press to use the Volume and Vibrator button, push up to raise the Treble or the Bass, and push down to decrease.

Pressing the mute button will make the volume change to 0, but the video or audio will continue to play. When in mute mode or with the volume set to 0, the voice announcements for powering on/off and switching the broadcast mode will still be played at 20% volume.

HOW TO CLOSE ALL

Press and hold the OFF button for 3-5 seconds, and you'll hear the voice prompt "power off".

HOW TO CHARGE THE REMOTE CONTROL

Located at the bottom of the remote control is a "C" USB port. This is used to charge the remote control. When you press any key, the light doesn't come on, which means your remote needs to be charged, use a suitable charger or USB port to charge the remote. When you connect the power supply to the remote, the indicator will start flashing blue, which indicates that your remote is charging. When the remote is fully charged, the indicator will stop flashing but will remain solid until the power supply is removed. When the remote is completely depleted or fully charged, the estimated charging time is 3 hours. When the remote control is not in use, place it under the daily light, and the Solar Charging Panel can charge the remote control.

FCC INSTRUCTION

CAUTION: Changes or modifications not expressly approved by the party responsible for compliance could void the user's authority to operate the equipment.

NOTE: This equipment has been tested and found to comply with the limits for a Class B digital device, pursuant to Part 15 of the FCC Rules. These limits are designed to provide reasonable protection against harmful interference in a residential installation. This equipment generates, uses, and can radiate radio frequency energy and, if not installed and used in accordance with the instructions, may cause harmful interference to radio communications. However, there is no guarantee that interference will not occur in a particular installation. If this equipment does cause harmful interference to radio or television reception, which can be determined by turning the equipment off and on, the user is encouraged to try to correct the interference by one more of the following measures:

- Reorient or relocate the receiving antenna.
- Increase the distance between the equipment and receiver.
- Connect the equipment into an outlet on a circuit different from that to which the receiver is connected.
- Consult the dealer or an experienced radio/TV technician for help.

Customer Service

If you have any questions regarding the use of this unit, or find that your unit needs service, please contact your retailer.