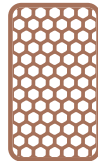


HOME COLLECTION

2022



INTEGRATED BESPOKE SOLUTIONS
FOR INDOORS & OUTDOORS

For more than four decades, Focal has created speaker drivers and high-end loudspeakers that deliver a unique sound. Our brand values are innovation and performance; excellence and pleasure. We are globally renowned for our exclusive technologies. The result of this technological heritage is class-leading products offering a natural, authentic performance, imbued with clarity and power.

With our collection of custom integrated loudspeakers, we offer an outstanding listening quality with our varied, complementary and discreet solutions.



HOME CINEMA

KITCHEN



BATHROOM



OUTDOORS



BEDROOM



RESTAURANT



PUBLIC PLACES



LIVING ROOM

RANGES

1000 SERIES

Exclusive 'W' technology
and pure Beryllium tweeter

300 SERIES

Exclusive Flax technology
and Aluminium/Magnesium tweeter

100 SERIES

Polyglass technology
and Aluminium tweeter



APPLICATIONS

IC In-Ceiling

In-ceiling loudspeaker

IW In-Wall

In-wall loudspeaker

ICW In-Wall / In-Ceiling

In-wall and in-ceiling loudspeaker

IWLCR In-Wall Left Center Right

In-wall loudspeaker for left, right,
center and surround channels

ICLCR In-Ceiling Left Center Right

In-ceiling loudspeaker for left, right,
center and surround channels

ST Stereo

In-wall and in-ceiling loudspeaker
producing a stereo effect

ICA In-Ceiling Angled

In-ceiling angled loudspeaker
for Dolby Atmos® effects

ICS In-Ceiling Shallow

In-ceiling shallow
loudspeaker

OD Outdoor

IP66-certified* outdoor loudspeaker

SUB Subwoofer

Integrated subwoofer

T 70 - 100 V transformer

To cover a very large
listening area

UL UL certification

Fire and electric shock
safety feature risks

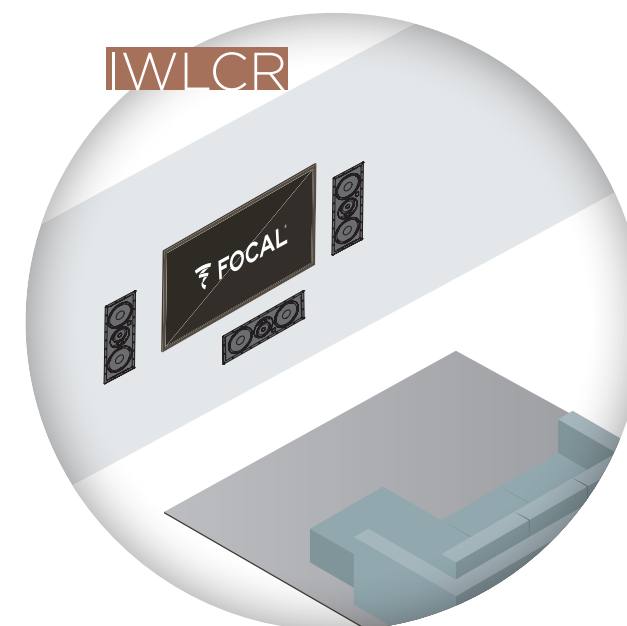
SPEAKER DRIVER DIAMETER

4 4" or 10cm

5 5" or 13cm

6 6" or 16.5cm

8 8" or 21cm



*IP codes are international standards used to identify the degrees of protection of products against the ingress of solid or liquid foreign objects. The first digit of the IP code represents the level of protection against the ingress of dust (0 to 6), the second represents the level of protection against water (0 to 8).



1000 SERIES



300 SERIES



100 SERIES



100-T SERIES



IN-CEILING

1000 ICLCR5
1000 ICA6
1000 ICW6

300 ICLCR5
300 ICW8
300 ICA6
300 ICW6
300 ICW4

100 ICLCR5
100 IC6ST
100 ICW8
100 ICW6
100 ICW5

100 IC8-T UL
100 ICW8-T
100 ICS6-T UL
100 ICW6-T
100 ICW5-T



ON-CEILING

100 OD8
100 OD6

100 OD8-T
100 OD6-T



IN-WALL

1000 ICW6
1000 IWLCR UTOPIA
1000 IWSUB UTOPIA
1000 IWLCR6
1000 IW6

300 ICW8
300 ICW6
300 ICW4
300 IWLCR6
300 IW6

100 ICW8
100 ICW6
100 ICW5
100 IWLCR5
100 IW6
100 IWSUB8

100 ICW8-T
100 ICW6-T
100 ICW5-T



ON-WALL

1000 IWLCR UTOPIA*
1000 IWSUB UTOPIA*
1000 IWLCR6*
1000 IW6*

100 OD8
100 OD6

100 OD8-T
100 OD6-T



ON FURNITURE



ON WALL 300



DÔME FLAX



SIB EVO



MU-SO

DÔME FLAX

SIB EVO

ON WALL 301
ON WALL 302

DÔME FLAX

SIB EVO
SIB EVO DOLBY ATMOS®

DÔME FLAX

SIB EVO
SIB EVO DOLBY ATMOS®

MU-SO
MU-SO QB

* On-wall frames available as optional extra

01.
1000 SERIES

13



02.
300 SERIES

21



03.
100 SERIES

27



04.
ON WALL 300

35



05.
DÔME FLAX

41



06.
SIB EVO

47



07.
SUBWOOFERS

55



08.
ASTRAL 16

59



09.
UNITI

65



10.
MU-SO

71



11.
100-T SERIES

83



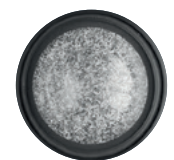
01.

1000 SERIES

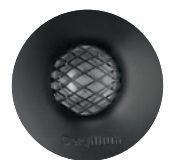
Unrivalled listening experiences

With seven exceptional products, the 1000 Series line promises unrivalled stereo and home cinema sound reproduction. These in-wall and in-ceiling loudspeakers are discreet, complementary, and can be adjusted and positioned for flawless sound spatialisation without compromise in your listening area. Both Utopia products enhance the line with their power and their design, specifically thought out to be assembled together.

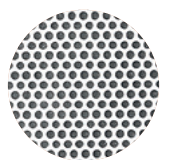




'W' sandwich cone



Pure Beryllium tweeter



Ready-to-paint grille



Positionable speaker drivers



Bespoke solution



Easy Quick Install®





UTOPIA

The icon far ahead of the rest

The collection's iconic flagship product, the 1000 Series Utopia loudspeaker does a sensational job at picking up the smallest sound details in films. Thanks to its mid-high range plate in the d'Appolito configuration, and with different speaker driver settings, the installation can be fully customised. For the ultimate system, the 1000 Series Utopia subwoofer has been designed to combine perfectly with the loudspeaker and to offer exceptional bass.

HANDCRAFTED

 IN FRANCE



1000 IWLCR UTOPIA



1000 IWSUB UTOPIA

Type	3-way closed-back in-wall	Closed-back in-wall subwoofer	
Speaker drivers	<ul style="list-style-type: none"> 4 x 6¹/₂" (16.5cm) 'W' Bass 2 x 3¹/₈" (8cm) 'W' cone 'M'-shaped Midranges 1" (27mm) pure Beryllium inverted dome tweeter 	3 x 6 ¹ / ₂ " (16.5cm) Bass with 'W' cone	
Frequency response	45Hz - 40kHz	40Hz - 2.5kHz	
Sensitivity (2.83V/1m)	92dB	83dB	74dB
Nominal impedance	8Ω	8Ω	72Ω
Recommended amp power	100 - 750W (8Ω) 200 - 1,500W (4Ω)	100 - 750W (8Ω) 200 - 1,500W (4Ω)	300 - 4,000W (8Ω) 300 - 4,000W (4Ω)
Settings	Tweeter (-3dB, 0dB, +3dB) Midrange (-2dB, 0dB, +2dB) Bass (-2dB, 0dB, +2dB)	Impedance selector 8Ω - 72Ω	
Dimensions (HxWxD)	45 ³ / ₄ x 12 x 4" (116.2 x 30.5 x 10.1cm)	23 ³ / ₈ x 12 x 4" (59.3 x 30.5 x 10.1cm)	
Mounting dimensions (HxW)	44 ⁵ / ₈ x 10 ⁷ / ₈ " (113.4 x 27.6cm)	22 ¹ / ₄ x 10 ⁷ / ₈ " (56.4 x 27.6cm)	
Mounting depth	3 ⁷ / ₈ " (9.9cm)	3 ⁷ / ₈ " (9.9cm)	
Weight (with grille)	42.77lbs (19.4kg)	21.16lbs (9.6kg)	
Accessory (optional)	On-Wall frame	On-Wall frame	



1000 IWLCR6



1000 IW6

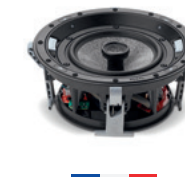
Type	3-way closed-back in-wall	2-way closed-back in-wall
Speaker drivers	<ul style="list-style-type: none"> • 7" (18cm) 'W' Passive radiator • 6 1/2" (16.5cm) 'W' Bass • 3" (8cm) 'W' Midrange • 1" (27mm) Pure Beryllium inverted dome tweeter 	<ul style="list-style-type: none"> • 6 1/2" (16.5cm) 'W' Mid-Bass • 1" (27mm) Pure Beryllium inverted dome tweeter
Frequency response	48Hz - 40kHz	55Hz - 40kHz
Sensitivity (2.83V/1m)	91dB	89dB
Nominal impedance	8Ω	8Ω
Recommended amp power	50 - 180W	25 - 150W
Settings	Tweeter (-3dB, 0dB, +3dB) Midrange (-3dB, 0dB, +3dB)	Tweeter (-3dB, 0dB, +3dB)
Dimensions (HxWxD ou ØxD)	29 3/4 x 12 x 4" (75.5 x 30.5 x 10.1cm)	17 1/8 x 12 x 4" (43.5 x 30.5 x 10.1cm)
Mounting dimensions (HxW ou Ø)	28 5/8 x 10 7/8" (72.6 x 27.6cm)	16 x 10 7/8" (40.6 x 27.6cm)
Mounting depth	3 7/8" (9.9cm)	3 7/8" (9.9cm)
Weight (with grille)	24.14lbs (10.95kg)	14.88lbs (6.75kg)
Accessory (optional)	On-Wall frame	On-Wall frame



1000 ICLCR5



1000 ICA6



1000 ICW6

Type	3-way bass-reflex in-ceiling	2-way coaxial in-ceiling	2-way coaxial in-wall/in-ceiling
Speaker drivers	<ul style="list-style-type: none"> • 2 x 5" (13cm) 'W' Bass • 4" (10cm) 'W' Midrange • 1" (25mm) Beryllium inverted dome tweeter 	<ul style="list-style-type: none"> • 6 1/2" (16.5cm) 'W' Mid-Bass • 1" (25mm) Pure Beryllium inverted dome tweeter 	<ul style="list-style-type: none"> • 6 1/2" (16.5cm) 'W' Mid-Bass • 1" (25mm) Pure Beryllium inverted dome tweeter
Frequency response	53Hz - 40kHz	55Hz - 40kHz	55Hz - 40kHz
Sensitivity (2.83V/1m)	91dB	90.5dB	89dB
Nominal impedance	8Ω	8Ω	8Ω
Recommended amp power	25 - 240W	25 - 150W	25 - 150W
Settings	Tweeter (-3dB, 0dB, +3dB) Midrange (-3dB, 0dB, +3dB)	Tweeter (-3dB, 0dB, +3dB)	Tweeter (-3dB, 0dB, +3dB)
Dimensions (HxWxD ou ØxD)	14 5/8 x 14 5/8 x 7 5/8" (37 x 37 x 19.5mm)	11 3/4 x 5" (29.9 x 12.7cm)	9 5/8 x 4 1/8" (24.4 x 10.5cm)
Mounting dimensions (HxW ou Ø)	13 3/8 x 13 3/8" (34 x 34cm)	10 3/8" (26.4cm)	8 1/2" (21.6cm)
Mounting depth	7 1/2" (19cm)	5 3/4" (14.6cm)	4" (10cm)
Weight (with grille)	18.30lbs (8.3kg)	6.61lbs (3kg)	5.29lbs (2.4kg)
Accessory (optional)	-	-	-

02.

300 SERIES

A source of inspiration...

Bring a whole new vibe to your spaces with the 300 Series and its natural flax cone speaker drivers. In addition to the acoustic qualities and sound clarity they offer, the products are innovatively designed and quick to fit, thanks to the Easy Quick Install® (EQI) system. Whether for stereo or Home Cinema use, or as a complement to a traditional hi-fi system, all you have to do is make your choice and enjoy.





Flax cone



Al/Mg tweeter



Ready-to-paint grille



Positionable plate



Tweeter and midrange settings



Easy Quick Install®





300 IWLCR6



300 IW6



300 ICLCR5

Type	3-way in-wall	2-way in-wall	3-way bass-reflex in-ceiling
Speaker drivers	<ul style="list-style-type: none"> • 2 x 6 1/2" (16.5cm) Woofers • 4" (10cm) Flax Midrange • 1" (25mm) Al/Mg inverted dome tweeter 	<ul style="list-style-type: none"> • 6 1/2" (16.5cm) Flax cone Mid-Bass • 1" (25mm) Al/Mg inverted dome tweeter 	<ul style="list-style-type: none"> • 2 x 5" (13cm) Flax woofers • 4" (10cm) Flax Midrange • 1" (25mm) Al/Mg inverted dome tweeter
Frequency response	40Hz - 28kHz	55Hz - 28kHz	55Hz - 28kHz
Sensitivity (2.83V/1m)	92dB	90dB	91dB
Nominal impedance	8Ω	8Ω	8Ω
Recommended amp power	50 - 150W	25 - 130W	50 - 150W
Settings	Tweeter (-3dB, 0dB, +3dB) Midrange (-3dB, 0dB, +3dB)	Tweeter (-3dB, 0dB, +3dB) Midrange (-3dB, 0dB, +3dB)	Tweeter (-3dB, 0dB, +3dB) Midrange (-3dB, 0dB, +3dB)
Dimensions (HxWxD or ØxD)	23 5/8 x 8 1/16 x 3 7/8" (60 x 22 x 9.8cm)	12 3/4 x 8 1/16 x 3 7/8" (32.3 x 22 x 9.8cm)	14 9/16 x 14 9/16 x 7 11/16" (37 x 37 x 19.5cm)
Mounting dimensions (HxW ou Ø)	22 3/8 x 7 1/2" (56.8 x 19.1cm)	11 1/2 x 7 1/2" (29.2 x 19.1cm)	13 3/8" x 13 3/8" (34 x 34cm)
Mounting depth	3 5/8" (9.3cm)	3 5/8" (9.3cm)	7 1/2" (19cm)
Weight	12.4lbs (5.65kg)	4.9lbs (2.25kg)	16.3lbs (7.4kg)



300 ICA6



300 ICW8



300 ICW6



300 ICW4

Type	2-way coaxial in-ceiling	2-way coaxial in-wall/in-ceiling	2-way coaxial in-wall/in-ceiling	2-way in-wall/in-ceiling
Speaker drivers	<ul style="list-style-type: none"> • 6 1/2" (16.5cm) Flax Mid-Bass • 1" (25mm) Al/Mg inverted dome tweeter 	<ul style="list-style-type: none"> • 8" (21cm) Flax Mid-Bass • 1" (25mm) Al/Mg inverted dome tweeter 	<ul style="list-style-type: none"> • 6 1/2" (16.5cm) Flax Mid-Bass • 1" (25mm) Al/Mg inverted dome tweeter 	<ul style="list-style-type: none"> • 4" (10cm) Flax Mid-Bass • 1" (25mm) Al/Mg inverted dome tweeter
Frequency response	65Hz - 28kHz	48Hz - 28kHz	65Hz - 28kHz	80Hz - 28kHz
Sensitivity (2.83V/1m)	89.5 dB	90dB	89dB	88dB
Nominal impedance	8Ω	8Ω	8Ω	8Ω
Recommended amp power	25 - 130W	25 - 150W	25 - 130W	25 - 100W
Settings	Tweeter (-3dB, 0dB, +3dB)	Tweeter (-3dB, 0dB, +3dB)	Tweeter (-3dB, 0dB, +3dB)	Tweeter (-3dB, 0dB, +3dB)
Dimensions (HxWxD or ØxD)	11 3/4 x 5" (29.9 x 12.7cm)	11 3/4 x 5" (29.9 x 12.7cm)	9 5/8 x 4 1/8" (24.4 x 10.5cm)	7 9/16 x 3 7/8" (19.2 x 9.8cm)
Mounting dimensions (HxW ou Ø)	10 3/8" (26.4cm)	10 3/8" (26.4cm)	8 1/2" (21.6cm)	6 3/8" (16.3cm)
Mounting depth	5 3/4" (14.6cm)	4 3/4" (12.2cm)	4 (10cm)	3 5/8" (9.3cm)
Weight	6.6lbs (3kg)	7.05lbs (3.2kg)	5.29lbs (2.4kg)	2.6lbs (1.3kg)

03.

100 SERIES

Discreet musicality

A comprehensive solution for your home audio needs, indoors and outdoors, the 100 Series offers outstanding performance from a compact design. The range is ideal for small-to-medium-sized rooms, for seamless sound throughout the house, stereo listening or Home Cinema installations. The tropicalised Polyglass cone is even suited for bathroom use, too.

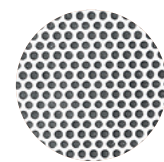




Polyglass
cone



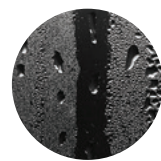
Aluminium
tweeter



Ready-to-paint
grille



Positionable
tweeter

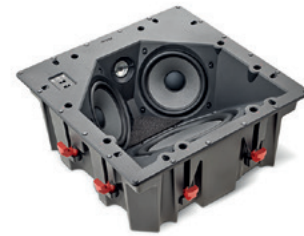


Tropicalised
cone



Compact design
unibody chassis





	100 IWLCR5	100 IW6	100 ICLCR5
Type	2-way in-wall D'Appolito	2-way in-wall	2-way in-ceiling
Speaker drivers	<ul style="list-style-type: none"> • 2 x 5" (13cm) Polyglass Mid-Bass • 1" (25mm) Aluminium inverted dome tweeter 	<ul style="list-style-type: none"> • 6¹/₂" (16,5cm) Polyglass Mid-Bass • 1" (25mm) Aluminium inverted dome tweeter 	<ul style="list-style-type: none"> • 2 x 5" (13cm) Polyglass Mid-Bass • 1" (25mm) Aluminium inverted dome tweeter • 8" (21cm) Polyglass Passive radiator
Frequency response	55Hz - 23kHz	60Hz - 23kHz	65Hz - 23kHz
Sensitivity (2.83V/1m)	90.5dB	89dB	92dB
Nominal impedance	8Ω	8Ω	8 Ω
Recommended amp power	25 - 120W	25 - 120W	25 - 120W
Settings	Tweeter (-3dB, 0dB, +3dB) Midrange (-3dB, 0dB, +3dB)	Tweeter (-3dB, 0dB, +3dB) Midrange (-3dB, 0dB, +3dB)	Tweeter (-3dB, 0dB, +3dB)
Dimensions (HxWxD ou ØxD)	17 ³ / ₈ x 6 ³ / ₄ x 3 ³ / ₈ " (44 x 17.3 x 8.6cm)	11 ³ / ₄ x 7 ⁵ / ₈ x 3 ⁵ / ₈ " (29.8 x 19.5 x 9.2cm)	14 x 14 x 5 ⁵ / ₁₆ " (35.4 x 35.4 x 15cm)
Mounting dimensions (HxW ou Ø)	16 ³ / ₈ " x 5 ³ / ₄ " (41.5 x 14.7cm)	10 ³ / ₄ x 6 ³ / ₄ " (27.3 x 17cm)	12 ⁷ / ₈ x 12 ⁷ / ₈ " (32.8 x 32.8cm)
Mounting depth	3 ¹ / ₄ " (8.3cm)	3 ¹ / ₂ " (8.8cm)	6" (15.2cm)
Weight	3.89lbs (2.9kg)	4.1lbs (1.85kg)	11.6lbs (5.3kg)

	100 IC6ST	100 ICW8	100 ICW6	100 ICW5
Type	2-way stereo coaxial in-ceiling	2-way coaxial in-wall/in-ceiling	2-way coaxial in-wall/in-ceiling	2-way coaxial in-wall/in-ceiling
Speaker drivers	<ul style="list-style-type: none"> • 6¹/₂" (16,5cm) Dual voice coil Polyglass Mid-Bass • 2 x 1" (25mm) Aluminium inverted dome tweeter 	<ul style="list-style-type: none"> • 8" (21cm) Polyglass Mid-Bass • 1" (25mm) Aluminium inverted dome tweeter 	<ul style="list-style-type: none"> • 6¹/₂" (16.5cm) Polyglass Mid-Bass • 1" (25mm) Aluminium inverted dome tweeter 	<ul style="list-style-type: none"> • 5" (13cm) Polyglass Mid-Bass • 1" (25mm) Aluminium inverted dome tweeter
Frequency response	60Hz - 23kHz	53Hz - 23kHz	62Hz - 23kHz	65Hz - 23kHz
Sensitivity (2.83V/1m)	89dB	90dB	89dB	88dB
Nominal impedance	8Ω	8Ω	8Ω	8Ω
Recommended amp power	25 - 100W	25 - 150W	25 - 100W	15 - 100W
Settings	Tweeter (-3dB, 0dB, +3dB)	Tweeter (-3dB, 0dB, +3dB)	Tweeter (-3dB, 0dB, +3dB)	Tweeter (-3dB, 0dB, +3dB)
Dimensions (HxWxD ou ØxD)	8 ³ / ₁₆ x 3 ³ / ₄ " (20.8 x 9.5cm)	9 ³ / ₄ x 4 ³ / ₈ " (24.8 x 11.1cm)	8 ³ / ₁₆ x 3 ³ / ₄ " (20.8 x 9.5cm)	7 ¹ / ₄ x 3 ⁷ / ₁₆ " (18.4 x 8.7cm)
Mounting dimensions (HxW ou Ø)	7 ¹ / ₄ " (18.4cm)	8 ¹ / ₁₆ " (22.4cm)	7 ¹ / ₄ " (18.4cm)	6 ⁵ / ₁₆ " (16cm)
Mounting depth	3 ⁵ / ₈ " (9.1cm)	4 ¹ / ₄ " (10.7mm)	3 ³ / ₄ " (9.1cm)	3 ¹ / ₄ " (8.2cm)
Weight	3.86lbs (1.75kg)	3.86lbs (1.75kg)	3.3lbs (1.5kg)	3.19lbs (1.45kg)



100 IWSUB8

Type	Passive subwoofer
Speaker drivers	8" (21cm) Polyglass Woofer
Frequency response	34 - 140Hz
Sensitivity (2.83V/1m)	89dB
Nominal impedance	8Ω
Recommended amp power	Max 200W / 4Ω
Dimensions (WxDxH)	13 ⁷ / ₈ x 3 ⁷ / ₈ x 5 ¹³ / ₁₆ " (35.2 x 9.8 x 130cm)
Mounting dimensions (WxH)	13 ⁷ / ₈ x 5 ¹³ / ₁₆ " (35.2 x 130cm)
Mounting depth	3 ³ / ₈ " (8.6cm)
Weight	32.3lbs (14.6kg)



100 IWSUB8 AMPLIFIER

Type	Subwoofer amplifier
Power (continuous)	Max 200W, 150W continuous 4Ω
Minimum load	4Ω
Voltage range	100 - 120V / 60Hz 220 - 230V / 50Hz
Power consumption	150W
Stand-by power consumption	0.5W
Frequency response	20 - 250Hz
Subsonic filter	18dB / oct.
Inputs	LFE, Line in L/R
Outputs	Line out L/R and subwoofer out binding post
Cord	Detachable IEC power cord
Protection	Dynamic power control, thermal protection, short circuit, fuse and over-current protection
Dimensions (HxWxD)	1.8" (2" with feet) x 16.9" (19" with rack brackets) x 10.1"
Weight	6.8lbs (3.1kg)



PACK 2 x 100 IWSUB8 & 100 IWSUB8 AMPLIFIER



PACK 100 IWSUB8 & 100 IWSUB8 AMPLIFIER



100 OD8

100 OD6

Type	Outdoor loudspeaker (IP66 certified)	Outdoor loudspeaker (IP66 certified)
Speaker drivers	<ul style="list-style-type: none"> 8" (21cm) Polyglass Mid-Bass 1" (25mm) Aluminium inverted dome tweeter 	<ul style="list-style-type: none"> 6¹/₂" (16.5cm) Polyglass Mid-Bass 1" (25mm) Aluminium inverted dome tweeter
Frequency response	60Hz - 23kHz	65Hz - 23kHz
Sensitivity (2.83V/1m)	88dB	87dB
Nominal impedance	8Ω	8Ω
Recommended amp power	20 - 150W	20 - 120W
Dimensions with brackets (HxWxD)	15 ⁶ / ₁₆ x 10 ³ / ₁₆ x 11" (39 x 25.8 x 28cm)	12 ⁹ / ₁₆ x 8 ¹³ / ₁₆ x 10 ¹ / ₁₆ " (31.9 x 22.4 x 25.6cm)
Finishes	<input checked="" type="radio"/> Black <input type="radio"/> White	<input checked="" type="radio"/> Black <input type="radio"/> White
Weight	12.6lbs (5.8kg)	9lbs (4.1kg)

04.

ON WALL 300

Creating emotion

Designed for stereo and Home Cinema use, the allure of the On Wall 300 loudspeakers lies in their sleek design, 'angled' silhouette and incredible sound. Their speaker drivers boast a natural Flax cone to bring realism, vocal clarity and sonic detail into your home. Available in a White High Gloss or Black Satin finish, On Wall 300 blends seamlessly into interiors, around a television.





Flax cone



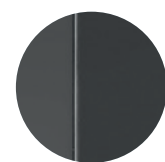
Al/Mg tweeter



Magnetic grille



Side ports



Black Satin finish



White High Gloss finish





ON WALL 301

Type	2-way bass-reflex loudspeaker	ON WALL 302	2.5-way bass-reflex loudspeaker
Speaker drivers	<ul style="list-style-type: none"> • 2 x 4" (10cm) Flax Mid-Bass • 1 x 1" (25mm) Tweeter TNF 	ON WALL 302	<ul style="list-style-type: none"> • 4 x 4" (10cm) Flax Mid-Bass • 1 x 1" (25mm) Tweeter TNF
Frequency response	53Hz - 28kHz	ON WALL 302	50Hz - 28kHz
Crossover frequency	2,500Hz	ON WALL 302	1,100Hz - 2,500Hz
Sensitivity (2.83V/1m)	87dB	ON WALL 302	91dB
Nominal impedance	8Ω	ON WALL 302	8Ω
Recommended amp power	25 - 130W	ON WALL 302	40 - 180W
Dimensions (HxWxD)	31 ¹ / ₂ x 6 ¹ / ₈ x 3 ⁹ / ₁₆ " (80 x 15.5 x 9cm)	ON WALL 302	49 ³ / ₁₆ x 6 ¹ / ₈ x 3 ⁹ / ₁₆ " (125 x 15.5 x 9cm)
Finishes	● ○	ON WALL 302	● ○
Weight	13lbs (5.9kg)	ON WALL 302	20.72lbs (9.4kg)



ON WALL 302



Stands sold separately by pair.

ON WALL 300 STAND

05.

DÔME FLAX

The sound spotlight

Made in France, Dôme is a line of miniature loudspeakers boasting a Flax sandwich cone, exclusive to Focal. This technology provides genuine benefits in terms of sound definition and precision. In terms of appearance, the Dôme design blends fine materials and elegant finishes. The loudspeakers are positionable and easily integrated into the wall, ceiling or on a stand, as you prefer.





Flax cone



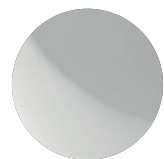
Al/Mg tweeter



Optional stand



On-wall or on-ceiling mounting



White High Gloss finish



Black High Gloss finish





DÔME FLAX

Type	2-way compact sealed speaker
Speaker drivers	<ul style="list-style-type: none"> • 4" (10cm) Flax Mid-Bass • 1" (25mm) Al/Mg inverted dome tweeter
Frequency response	80Hz - 28kHz
Sensitivity (2.83V/1m)	88dB
Nominal impedance	8Ω
Recommended amp power	25 - 100W
Dimensions (HxWxD)	6 ³ / ₄ x 5 ¹¹ / ₁₆ x 5 ⁵ / ₈ " (17.2 x 14.4 x 14.3cm)
Finishes	● ○
Weight	4.19lbs (1.9kg)



PACK DÔME FLAX 5.1

5 x Dôme Flax
1 x Sub Air



Stands sold separately by pair.

DÔME STAND

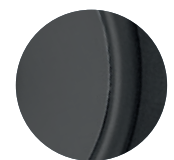
06.

SIB EVO

At the heart of the action

The line comprises one traditional loudspeaker, the Sib Evo, a second Sib Evo Dolby Atmos® model equipped with a specific speaker driver on top, and an active subwoofer, the Cub Evo. These satellite loudspeakers combine front and vertical diffusion thanks to the Dolby Atmos® effects created. The sound waves are projected onto the ceiling and are then reflected back to the listener for an immersive experience.

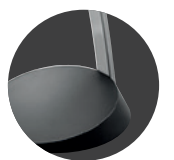




Polyflex speaker driver



Dolby Atmos® effects



Optional stands



Compact loudspeaker

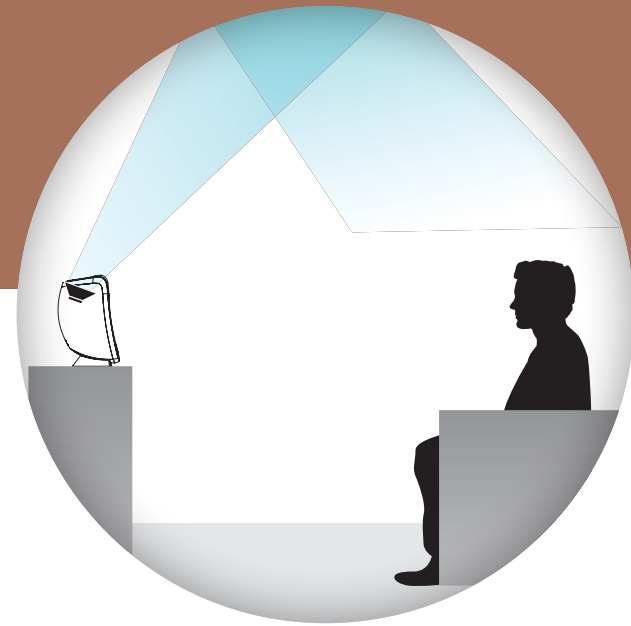


Optional wall attachment



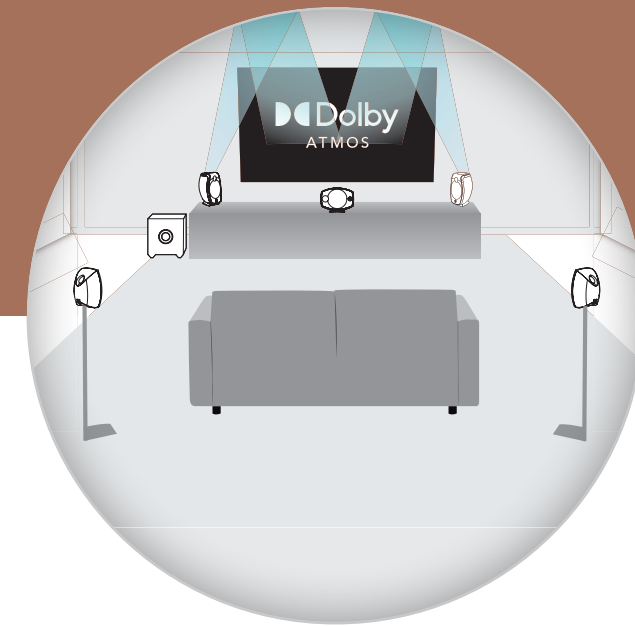
Black finish





Dolby Atmos

Dolby Atmos® technology offers a cinema experience by creating powerful sound effects. You will find yourself at the heart of the action, music and dialogue of the films you watch, plunged into a 3D space of captivating realism. The Sib Evo loudspeakers equipped with Dolby Atmos® technology are called *enabled speakers*. In addition to the vertical speaker driver, a second is installed on the upper surface of the loudspeaker and directs the sound towards the ceiling at a carefully calculated angle, so that the signal is reflected around the entire room. The sound comes simultaneously from the front, back, sides and above.



IMMERSIVE AUDIO

Dolby Atmos® technology isolates each sound from the original soundtrack and mix as an independent audio object. Imagine a scene in a house: you are hearing the conversations, the footsteps in the neighbouring room, sounds coming through the open window, all at the same time and spatialised in 3D, as though you were actually there... Dolby Atmos® comes into its own in scenes where the effects are vertical: a plane or helicopter passing overhead, a thunderstorm, pounding rain, etc. The Sib Evo 5.1.2 pack offers exceptional sound effects and adds a new dimension to films.



SIB EVO DOLBY ATMOS®

Type	<ul style="list-style-type: none"> • Front channel: 2-way bass-reflex loudspeaker • Atmos® channel: Full-range sealed loudspeaker 	SIB EVO	2-way compact bass-reflex loudspeaker
Speaker drivers	<ul style="list-style-type: none"> • Front channel: 5" (13cm) Polyflex Woofer • ¾" (19mm) soft dome tweeter • Atmos® Channel: 4" (10cm) full-range speaker 		<ul style="list-style-type: none"> • 5" (13cm) Polyflex Woofer • ¾" (19mm) soft dome tweeter
Frequency response	<ul style="list-style-type: none"> • Front channel: 65Hz to 25kHz • Atmos® Channel: 90Hz to 20kHz 		70Hz to 25kHz
Sensitivity (2.83V/1m)	90dB		90dB
Nominal impedance	6Ω		6Ω
Recommended amp power	25 - 200W		25 - 200W
Dimensions (HxWxD)	11 ⁵ / ₈ x 7 ¹ / ₁₆ x 7 ¹ / ₂ " (29.5 x 19.5 x 19cm)		9 ¹⁵ / ₁₆ x 6 ³ / ₈ x 6 ³ / ₈ " (25.2 x 16.2 x 16.2cm)
Weight	7lbs (3.25kg)		4lbs (1.8kg)



PACK SIB EVO DOLBY ATMOS® 5.1.2

- 5 x Sib Evo
- 2 x Sib Evo Dolby Atmos®
- 1 x Cub Evo
- 2 x Wall attachment



PACK SIB EVO 5.1

- 5 x Sib Evo
- 1 x Cub Evo
- 2 x Wall attachment



Wall attachment supplied with 5.1 and 5.1.2 packs.

WALL ATTACHMENT



Hip Evo stands sold as optional extra.

HIP EVO STANDS

07. SUBWOOFERS

Dynamics, impact and depth

The subwoofer is a major component of any audio installation, providing dynamics and intensity. With their seductive design, Focal subwoofers offer a deep, impactful and powerful bass. They effectively complement a wide range of configurations, from the most sophisticated Home Cinema installations to compact systems. All you have to do is choose the subwoofer for you!





**SUB UTOPIA EM
COLOUR EVO**



SW 1000 BE



SUB 1000 F



SUB 600P



SUB AIR



CUB EVO



**1000 IWSUB
UTOPIA**

Type	Stackable passive subwoofer	Active bass-reflex subwoofer	Active sealed subwoofer
Speaker drivers	<ul style="list-style-type: none"> Electro-Magnetic 13" (33cm) 'W' bass driver Stackable (up to 3 subwoofers tall) Almost 130dB SPL at 1m (in a corner) 	13" (33cm) 'W' Woofer	12" (30cm) Flax Woofer
Frequency response	22Hz - 500Hz	20Hz - 150Hz	24Hz - 160Hz
Response at - 6dB	19Hz	18Hz	22Hz
Features	Sensitivity (2.83V/1m)	93dB	<ul style="list-style-type: none"> LFE/Stereo inputs Adjustable subsonic crossover: 40Hz to 160Hz/12dB/Oct Phase inverter: 0 - 180° Autopower
	Nominal impedance	8Ω	
	Minimal impedance	5.5Ω	
	Recommended amp power	500 - 1,000W	
Amplifier power	-	600W BASH® amplifier	1000W BASH® amplifier
Finishes	● ○	-	-
Dimensions (HxWxD)	25 ^{15/16} x 19 x 24 ^{1/2} " (63.4 x 48.3 x 62.2cm)	21 ^{1/16} x 19 ^{1/16} x 17" (53.5 x 50 x 43.2cm)	16 ^{17/32} x 15 ^{3/4} x 16 ^{17/32} " (42 x 40 x 42cm)
Weight	158.5lbs (72kg)	92.4lbs (42kg)	47lbs (21.5kg)

Type	Active closed subwoofer	Flat bass-reflex subwoofer	Active bass-reflex subwoofer	
Speaker drivers	12" (30cm) Polyflex Woofer	8" (21cm) Woofer cellulose pulp cone	8" (21cm) Polyflex Woofer	
Frequency response	28Hz - 270Hz	42Hz - 200Hz	35Hz - 150Hz	
Response at - 6dB	26Hz	35Hz	30Hz	
Features	<ul style="list-style-type: none"> RCA input: Right, left, LFE Variable crossover frequency: 40Hz - 200Hz (LFE) Phase inverter: 0 - 180° AutoStandby enable / disable 	<ul style="list-style-type: none"> Wireless Transmitter (KLEER® technology) LFE and Left/Right Input Variable crossover frequency: 50Hz to 200Hz Autopower 	<ul style="list-style-type: none"> Right, left LFE Variable crossover frequency: 40Hz to 200Hz (LFE) On/Autopower (0.5W) 	
	Amplifier power	600W Dynamic 300W RMS	150W BASH® amplifier	200W Class D amplifier
	Finishes	-	● ○	-
	Dimensions (HxWxD)	15 ^{3/4} x 15 ^{3/4} x 16 ^{3/4} " (40 x 40 x 42.5mm)	16.1 x 14.2 x 6.3" (41 x 36 x 16cm)	12 x 11 ^{1/8} x 11 ^{3/4} " (30.5 x 28.2 x 29.9cm)
Weight	46.3lbs (21kg)	17lbs (7.65kg)	17.5lbs (8kg)	



100 IWSUB8
Built-in subwoofer (see p.33)

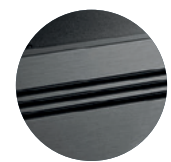
08.

ASTRAL 16

Sound immersion

Astral 16 is a 16-channel audio-video processor and amplifier that allows you to enjoy your private cinema screenings at their best. Compatible with Control4, Crestron, Savant and RTI, this cutting-edge electronic device incorporates 12 class-D amplified channels and handles all audio formats (DolbyAtmos®, DTS:X™ etc.). You can control whichever system you want by room via a simple app, enjoy access to technical support at any time and customise your system as desired.

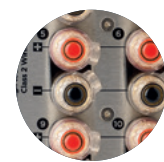




Audio-video processor



Upgradable product



12 x 250W RMS



Home Theater & Multiroom



Dolby Atmos®
DTS:X® - Auro 3D®



Dirac Live® acoustics correction





ASTRAL 16

Type	16 channel audio-video processor and amplifier	
Main features	• Compatible formats	Dolby Atmos [*] / DTS:X™ / Auro-3D [*]
	• Calibration	Powered by Dirac Live [®] : target curve editable from 20Hz to 20kHz for all channels (including subwoofers), phase correction full bandwidth 20Hz - 20kHz on all channels (including subwoofers)
	• 'Remote Monitoring' function	
Multichannel / Surround Processing	• Output channels	16
	• Decoding / upmixing channels	Up to 16 channels
HDMI	• Input sampling rate supported	Up to 192kHz
	• Stereo downmix	
	• Bass management	Fully flexible
	• Multi-subwoofer channels	Unlimited
	• Multi-way crossover	(6-12-18-24-36-48dB/oct)
Audio Inputs	• 20 Parametric EQ per channel	
	• HDMI inputs	7 : HDMI 2.0 / HDCP 2.2
Amplified Audio Outputs	• HDMI outputs (mirror)	1 : HDMI 2.0 / HDCP 2.2 (with eARC) 2 : HDMI 2.0 / HDCP 2.2
	• Supported video format	up to 4K UHD
	• High Dynamic Range	HDR10 / HLG
	• Color Space and Subsampling	4:4:4, 4:2:2, 4:2:0
	• Deep Color	12 bpc
	• Max resolution supported	4K 60fps 4:4:4 8bpc
	• HDMI	3D / 4K / eARC
Audio Inputs	• Digital input	3 x coaxial, 3 x optical
	• Analog stereo inputs	4 x RCA inputs
Amplified Audio Outputs	• Amplified main outputs	12
	• Analog main outputs, balanced	4 x XLR
	• Stereo downmix outputs, balanced	2 x XLR
	• Technology	Class D
	• Amplified channels	12
Amplified Audio Outputs	• Continuous power output, per channel, to 0.1%THD	8Ω / 4Ω / 2.7Ω
	• 3 channels driven simultaneous	200W / 400W / 650W
	• 6 channels driven simultaneous	200W / 350W / 350W
	• 12 channels driven simultaneous	200W / 300W

Set-Up Management	<ul style="list-style-type: none"> • Configurable multi-theater management • Configurable audio zones management • Unlimited Theater and audio zones listening presets • Backup and restore of set-up • Firmware update via USB/network 	
Control Inputs and Outputs	• USB type A	2
	• Ethernet	
	• Trigger	4 (out)
Control and custom Installation	• IR remote ports, in/out	1 / 1
	• Web-based product configurator	
Power Supply	• TCP/IP API based control	
	• Focal Remote iPad [®] control application	
	• Home automation	Control4, Crestron, RTI and Savant
	• Front panel display	TFT 4.3"
Supplied with	• Voltage range	100V to 240V
	• Type	SMPS
	• Range selection	Universal
Dimensions avec stands (HxWxD)	• Calibrated measurement microphone and tripod	
	• Dirac Live [®] license	
	• 32.9ft (10m) cable with infra-red detector	
	• Mounting kit	
Weight	• Dimensions	7½ x 18⅞ x 19⅝" (19.1 x 47.9 x 49cm)
	• Weight net with stands	44.1lbs (20kg)
	• Weight net with accessories for rack	50.7lbs (23kg)

09. UNITI

Amplify your emotions

The Uniti line from Naim Audio comprises all-in-one players that work individually or in combination with other devices. Simply add loudspeakers to allow your music to express itself fully in any room in your home. Assembled by hand by the Naim experts in their Salisbury workshops in England, these sleek and compact players offer a deep immersive sound.

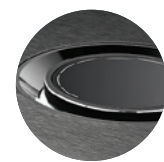




Multiroom
Naim app



Glass LCD
colour screen



Volume
wheel



Brushed
Aluminium



High-resolution
streaming



Multiple
sources





	UNITI NOVA	UNITI STAR
Type	All-in-one music streaming player	All-in-one music streaming player
Streaming	Streaming: Apple AirPlay 2, Chromecast Built-in, UPnP™, Spotify® Connect, TIDAL, Roon Ready, Bluetooth, Internet Radio, Qobuz	Streaming: Apple AirPlay 2, Chromecast Built-in, UPnP™, Spotify® Connect, TIDAL, Roon Ready, Bluetooth, Internet Radio, Qobuz
Audio Inputs	<ul style="list-style-type: none"> • 2 x Optical TOSLink (up to 24bit/96kHz) • 2 x Coaxial RCA (up to 24bit/192kHz, DoP 64Fs) • 1 x BNC (up to 192kHz, DoP 64Fs) • 1 x HDMI ARC • 2 x RCA • 2 x 5-pin DIN • 2 x USB Type A socket (front and rear) • 1 x SD card 	<ul style="list-style-type: none"> • 2 x Optical TOSLink (up to 24bit/96kHz) • 2 x Coaxial RCA (up to 24bit/192kHz, DoP 64Fs) • 1 x BNC (up to 192kHz, DoP 64Fs) • 1 x HDMI ARC • 1 x RCA • 1 x 5-pin DIN • 2 x USB Type A socket (front and rear) • 1 x SD card
Audio Outputs	<ul style="list-style-type: none"> • 1 x Stereo power amplifier • 1 x RCA sub/pre output • 1 x 3.5mm headphone jack 	<ul style="list-style-type: none"> • 1 x Stereo power amplifier • 1 x RCA sub/pre output • 1 x 3.5mm headphone jack
Digital	<ul style="list-style-type: none"> • 2 x Optical TOSLink (up to 24bit/96kHz) • 2 x Coaxial RCA (up to 24bit/192kHz, DoP 64Fs) • 1 x HDMI ARC 	<ul style="list-style-type: none"> • 2 x Optical TOSLink (up to 24bit/96kHz) • 2 x Coaxial RCA (up to 24bit/192kHz, DoP 64Fs) • 1 x BNC (up to 192kHz, DoP 64Fs) • 1 x HDMI ARC
USB	2 x USB Type A Socket (front and rear)	2 x USB Type A Socket (front and rear)
Multiroom	Sync up to five Naim Streaming products and control via the Naim App	Sync up to five Naim Streaming products and control via the Naim App
Amplifier Output	80W per channel into 8Ω	70W per channel into 8Ω
Dimensions (HxWxD)	9.5 x 43.2 x 26.5cm	9.5 x 43.2 x 26.5cm
Weight	28.7lbs (13kg)	26.5lbs (12kg)

	UNITI ATOM
Type	All-in-one music streaming player
Streaming	Streaming: Apple AirPlay 2, Chromecast Built-in, UPnP™, Spotify® Connect, TIDAL, Roon Ready, Bluetooth, Internet Radio, Qobuz
Audio Inputs	<ul style="list-style-type: none"> • 2 x Optical TOSLink (up to 24bit/96kHz) • 1 x Coaxial RCA (up to 24bit/192kHz, DoP 64Fs) • 1 x HDMI ARC • 1 x RCA • 2 x USB Type A socket (front and rear)
Audio Outputs	<ul style="list-style-type: none"> • 1 x Stereo power amplifier • 1 x RCA sub/pre output • 1 x 3.5mm headphone jack
Digital	<ul style="list-style-type: none"> • 2 x Optical TOSLink (up to 24bit/96kHz) • 1 x Coaxial RCA (up to 24bit/192kHz, DoP 64Fs) • 1 x HDMI ARC
USB	2 x USB Type A Socket (front and rear)
Multiroom	Sync up to five Naim Streaming products and control via the Naim App
Amplifier Output	40W per channel into 8Ω
Dimensions (HxWxD)	9.5 x 24.5 x 26.5cm
Weight	15.45lbs (7kg)

10.

MU-SO

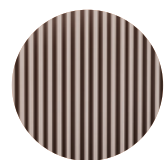
Remastered excellence

The Mu-so 2nd Generation family from Naim Audio are wireless all-in-one systems that deliver high-resolution listening experiences, whether you want to enjoy your digital musical collection, Internet radio or streaming platforms. You will also benefit from multi-room installation options, multiple features and, of course, musical power delivered by their Focal-optimised speaker drivers.





Multi-room application



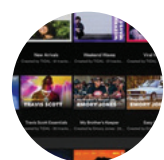
Aluminium heatsink



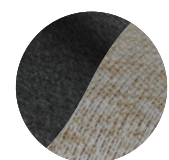
Interactive control crown



Brushed Aluminium finish

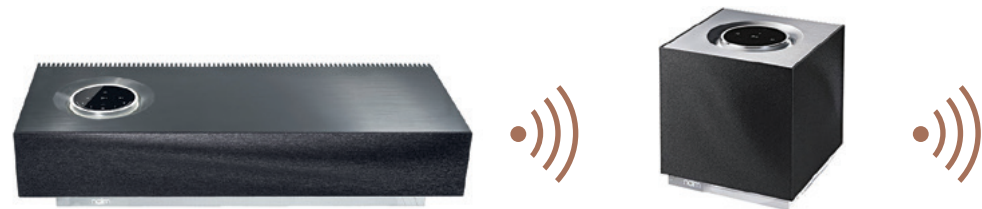


Integrated streaming services



Black or coloured grille





	MU-SO 2 ND GENERATION	MU-SO QB 2 ND GENERATION
Type	3-way bass-reflex stereo connected speaker	3-way stereo connected compact speaker with passive radiator
HDMI	ARC and CEC	-
Streaming	Apple AirPlay 2, Chromecast Built-in, UPnP™, Spotify® Connect, TIDAL, Roon Ready, Bluetooth, Internet Radio, Qobuz	Apple AirPlay 2, Chromecast Built-in, UPnP™, Spotify® Connect, TIDAL, Roon Ready, Bluetooth, Internet Radio, Qobuz
Audio Inputs		
Analogue	3.5mm Jack	3.5mm Jack
USB	USB 2 (Type A connector)	USB 2 (Type A connector)
Digital optical toslink	S/PDIF up to 24bit/96kHz	S/PDIF up to 24bit/96kHz
Finishes	Burnished and anodised aluminium casework, CNC milled, bead blasted and anodised aluminium heatsinks, dual-tone grey and black fabric grille	Burnished and anodised aluminium casework, CNC milled, bead blasted and anodised aluminium heatsinks, dual-tone grey and black fabric grille
Power	Amplifier Output 450W - (6 x 75W)	Amplifier Output 300W - (4 x 50W, 1 x 100W)
Dimensions (HxWxD)	12.2 x 62.8 x 26.4cm	21 x 21.8 x 21.2cm
Weight	24.7lbs (11.2kg)	12.35lbs (5.6kg)



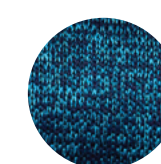
MU-SO
WOOD EDITION



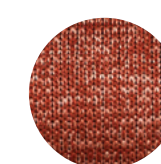
MU-SO FOR BENTLEY
SPECIAL EDITION



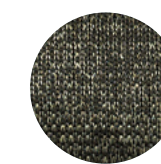
Black



Peacock



Terracotta



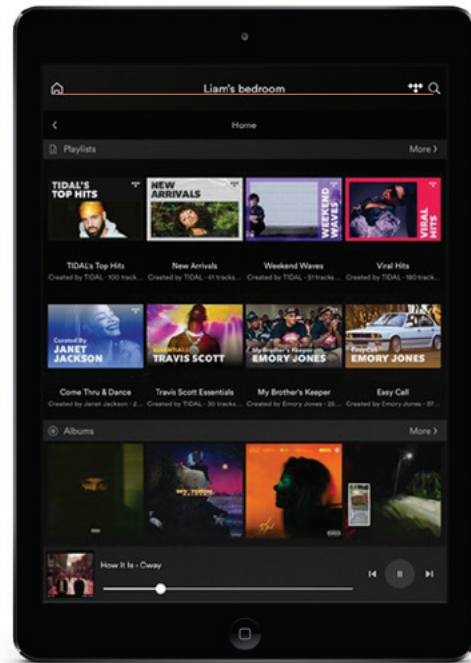
Olive

Compatible with
the standard edition

MU-SO GRILLE

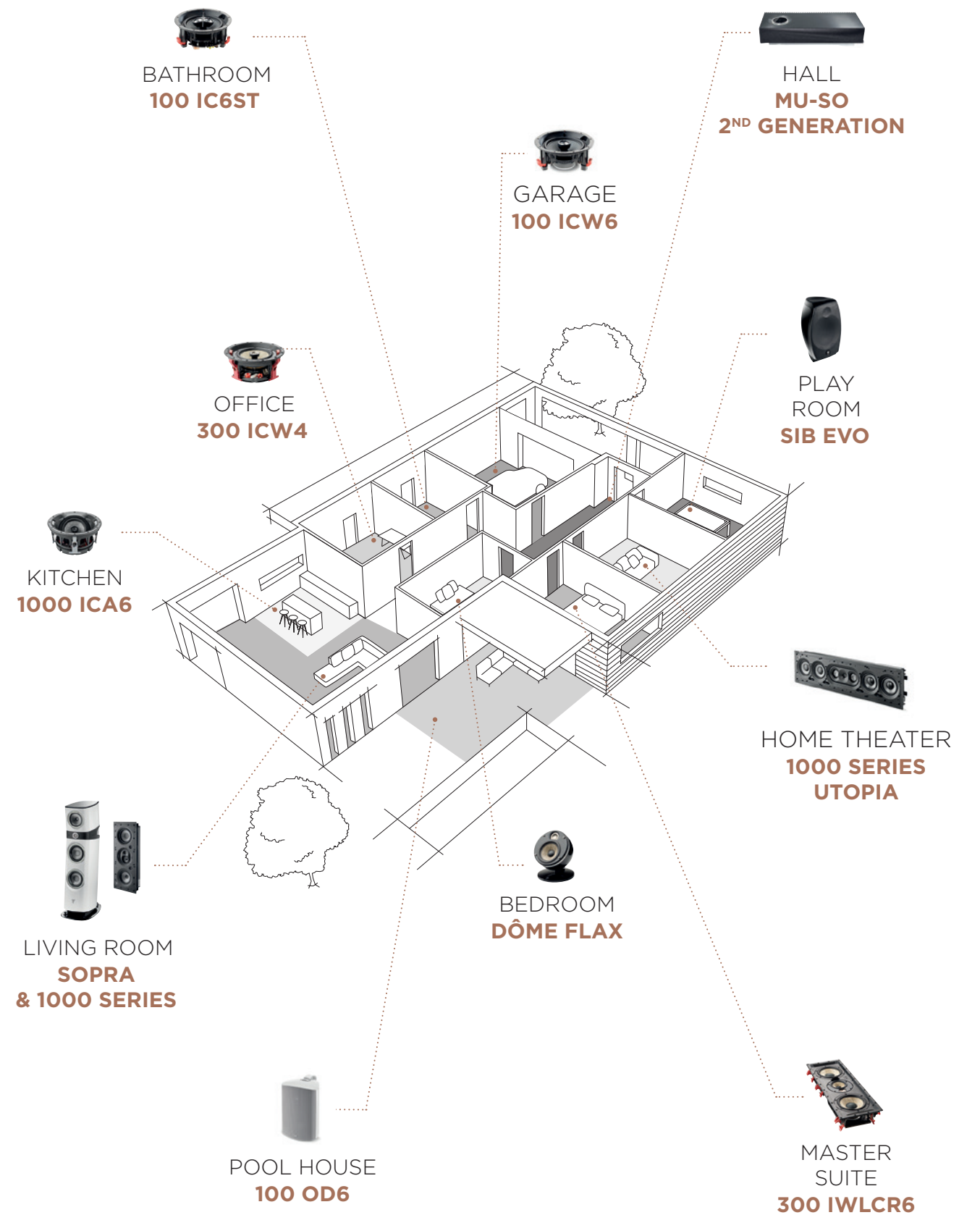
Compatible with
the standard edition

MU-SO QB GRILLE



NAIM APP

Available on iOS and Android, the simple yet sophisticated Naim App lets you easily control and organise your audio experience across all connected Naim products. Play music in every room, adjust the volume, choose your tracks, browse album covers, create playlists, save your favourite radio stations, and much more.



CI EXPERT OFFICIAL PARTNER

So you can optimise the full potential of our 1000 Series, our dedicated retailer network is on hand to listen to your requirements. These specialist teams are trained in Focal products and can assist you with any questions you may have. Our installers also have priority access to The Cinema Designer global software to accurately design your installation and offer a bespoke service.



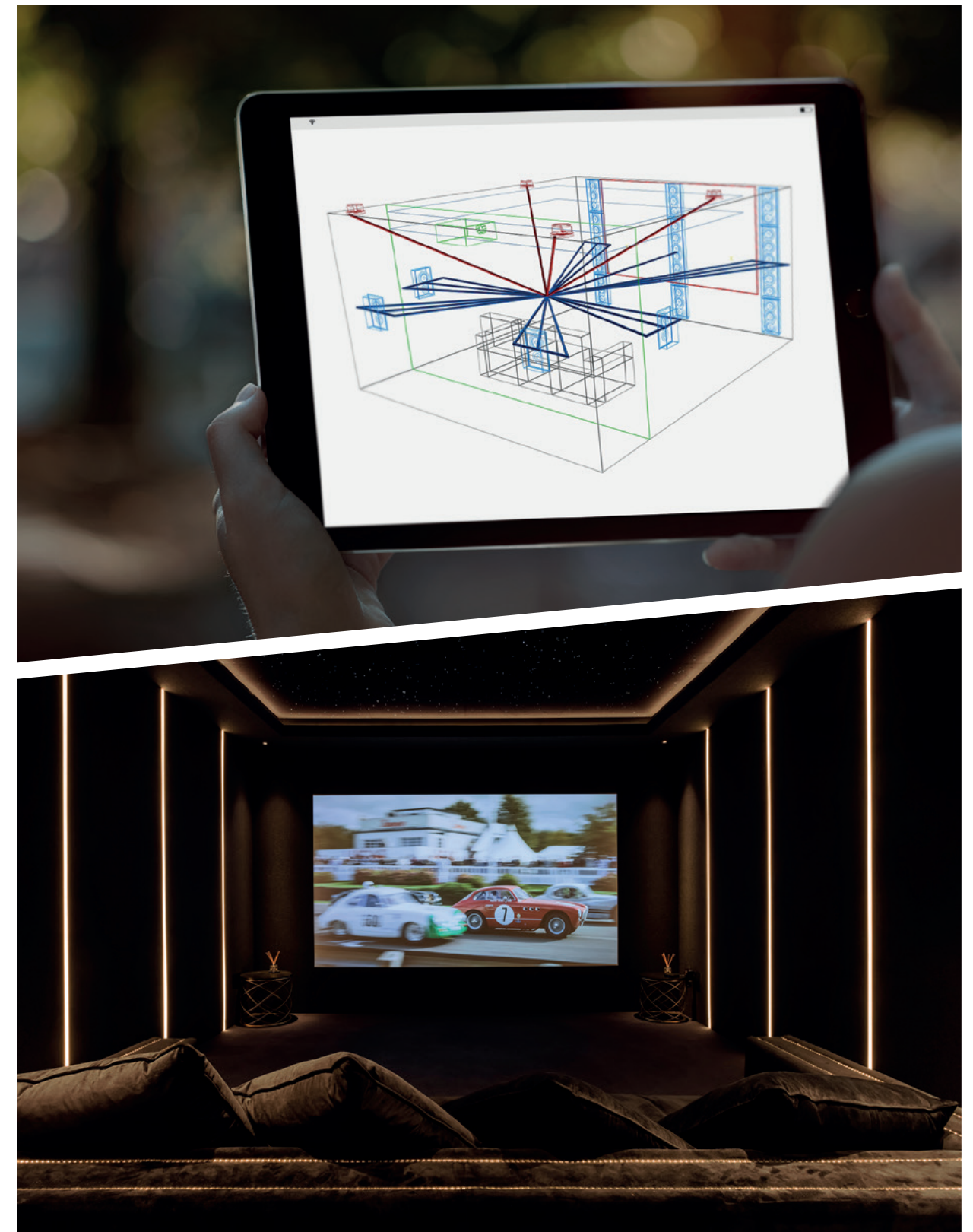
Contact our CI Expert reseller network
to help you create your home cinema:

www.focal.com/ci-expert



Your bespoke Home Cinema

The Focal Integration products are available on The Cinema Designer global database. This interactive cloud software pulls together the entire design process of an outstanding Home Cinema system. Based on the size of your room, it specifies the exact placement of the loudspeakers, screen, seats and projector. It details requirements in terms of amplification and much more.

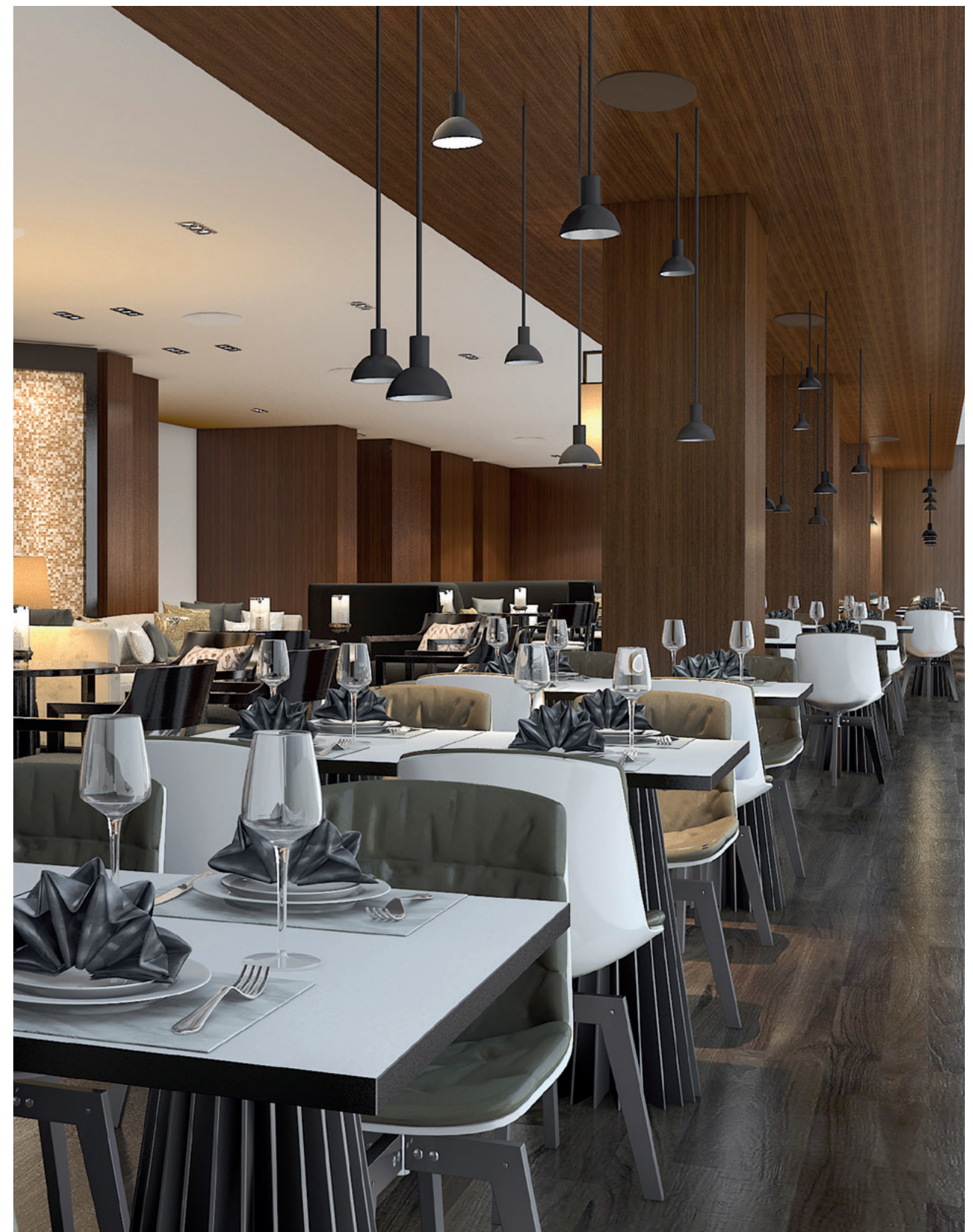


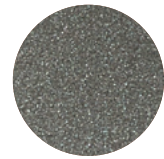
11.

100-T SERIES

Focal sound for large spaces

The 100-T Series is a direct descendant of the 100 Series, but with the addition of a transformer that adjusts the power of the loudspeakers for 70V/100V systems. This makes it possible to cover a very large listening area and minimise amplifier channels. The compact design and low directivity of the speaker drivers make them incredibly discreet and musically uniform, whilst Focal's expertise guarantees your large spaces will have that incredible sound signature.

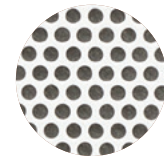




Polyglass cone



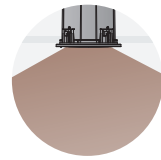
Positionable tweeter



Ready-to-paint grille



Euroblock connector



Wide dispersion



High impedance 70V/100V





100 ICW8-T

100 ICW6-T

100 ICW5-T

Type	2-way coaxial in-wall/in-ceiling 100V/70V line installation	2-way coaxial in-wall/in-ceiling 100V/70V line installation	2-way coaxial in-wall/in-ceiling 100V/70V line installation
Speaker drivers	<ul style="list-style-type: none"> 8" (21cm) Polyglass Mid-Bass 1" (25mm) Aluminium inverted dome tweeter 	<ul style="list-style-type: none"> 6" (16.5cm) Polyglass Mid-Bass 1" (25mm) Aluminium inverted dome tweeter 	<ul style="list-style-type: none"> 5" (13cm) Polyglass Mid-Bass 1" (25mm) Aluminium inverted dome tweeter
Frequency response	53Hz - 23kHz	62Hz - 23kHz	65Hz - 23kHz
Power in 70V	7.5/15/30W	4/7.5/15W	2/4/7.5W
Power in 100V	15/30/60W	7.5/15/30W	4/8/15W
Sensitivity (2.83V/1m)	90dB	89dB	88dB
Nominal impedance	8Ω	8Ω	8Ω
Recommended amp power	25 - 100W	25 - 100W	15 - 100W
Dimensions (ØxP)	9¾ x 4¾" (24.8 x 11.1cm)	8¾ x 3¾" (20.8 x 9.5cm)	7¼ x 4" (18.4 x 10cm)
Mounting dimensions	8¹³⁄₁₆" (22.4cm)	7¼" (18.4cm)	6¾" (15.7cm)
Mounting depth	4¼" (10.7cm)	3⅝" (9.1cm)	3¾" (9.6cm)
Weight (with grille)	5lbs (2.3kg)	3.75lbs (1.7kg)	3.5 lbs (1.6kg)



IP66



IP66

100 OD8-T

100 OD6-T

Type	Outdoor loudspeaker (IP66 certified)	Outdoor loudspeaker (IP66 certified)
Speaker drivers	<ul style="list-style-type: none"> 8" (21cm) Polyglass Mid-Bass 1" (25mm) Aluminium inverted dome tweeter 	<ul style="list-style-type: none"> 6½" (16.5cm) Polyglass Mid-Bass 1" (25mm) Aluminium inverted dome tweeter
Frequency response	60Hz - 23kHz	65Hz - 23kHz
Power in 70V	15/30/60 W	7.5/15/30 W
Power in 100V	30/60/120 W	15/30/60 W
Sensitivity (2.83V/1m)	88dB	87dB
Nominal impedance	8Ω	8Ω
Recommended amp power	20 - 150W	20 - 120W
Dimensions with brackets (HxWxD)	15 ⁹ / ₁₆ x 10 ³ / ₁₆ x 11" (39 x 25.8 x 28cm)	12 ⁹ / ₁₆ x 8 ¹³ / ₁₆ x 10 ¹ / ₁₆ (31.9 x 22.4 x 25.6cm)
Finishes	● ○	● ○
Weight	12.6lbs (5.8kg)	9lbs (4.1kg)

UL

Safety certification

The 100-T Series in-ceiling coaxial loudspeakers are UL-certified (UL 1480 and UL 2043). Those are recognised american standards for fire and electric shock risks, meaning they are fully compliant with current regulations on fire and electric shock risks.



100 IC8-T UL



100 ICS6-T UL

Type	2-way coaxial bass-reflex in-ceiling 100V/70V or 8Ω installations Steel back can	2-way coaxial bass-reflex in-ceiling 100V/70V or 8Ω installations Steel back can
Speaker drivers	<ul style="list-style-type: none"> • 8" (21cm) Polyglass Mid-Bass • 1" (25mm) Aluminium inverted dome tweeter 	<ul style="list-style-type: none"> • 6½" (16cm) Polyglass Mid-Bass • 1" (25mm) Aluminium inverted dome tweeter
Frequency response	53Hz - 23kHz	70Hz - 23kHz
Power in 70V	7.5 / 15 / 30W	4 / 8 / 15W
Power in 100V	15 / 30 / 60W	8 / 15 / 30W
Sensitivity (2.83V/1m)	91dB	89dB
Nominal impedance	8Ω	8Ω
Recommended amp power	15 - 150W	15 - 100W
Certifications	UL 1480 / UL 2043	UL 1480 / UL 2043
Dimensions (ØxP)	11¼ x 8⅞" (29.7 x 22.5cm)	11¼ x 4⅝" (29.7 x 11.6cm)
Mounting dimensions	10⅜" (26.5cm)	10⅜" (26.5cm)
Mounting depth	8⅜" (21.2cm)	4" (10.3cm)
Weight (with grille)	9.37lbs (4.25 kg)	7.5lbs (3.4kg)

ACCESSORIES

Integrated loudspeakers

PRE-ASSEMBLY KITS

These kits allow you to precisely position in-wall and in-ceiling products in new builds. They comprise a mounting strip combined with a frame for the perfect placement of your loudspeakers.

Product compatibility

1000 IWLCR UTOPIA

2 X IWSUB UTOPIA

1000 IWSUB UTOPIA

1000 IWLCR UTOPIA & 1000 IWSUB UTOPIA

1000 IWLCR UTOPIA & 2 X 1000 IWSUB UTOPIA

1000 IWLCR6

1000 IW6

1000 ICW6

1000 ICA6

1000 ICLCR5

300 ICLCR5

300 IWLCR6

300 IW6

300 ICW8

300 ICW6

300 ICW4

100 IWLCR5

100 IW6

100 ICLCR5

100 ICW8 / 100 ICW8-T

100 ICW6 / 100 ICW6-T

100 IC6ST

100 ICW5 / 100 ICW-T

100 IC8-T UL

100 ICS6-T UL

ON-WALL FRAMES

Mounted frames allow loudspeakers to be installed on walls. They are available in White High Gloss or raw, ready-to-paint finish. Slim, in-wall anti-vibration studs allow for easy installation.



Product compatibility

1000 IWLCR UTOPIA
1000 IWSUB UTOPIA
1000 IWLCR6
1000 IW6

FIRE BACKCAN

Designed with materials specially adapted to high temperatures, this fire-proof built-in casing ensures your installation is safe, for perfect reliability. It also provides sound insulation.



Insulator	Product compatibility			Dimensions (HxWxD)
	1000 SERIES	300 SERIES	100 SERIES	
1 5/8" (40mm) ceramic fibre	1000 ICW6	300 ICW4 300 ICW6 300 IW6	100 ICW5 100 ICW6 100 ICW8 100 IC6ST 100 IW6	1 7/8" x 1 9" x 5 7/8" (478 x 482 x 149mm)





1000 SERIES



'The 1000 Series goes even further in terms of acoustic performance and integration possibilities'

RESIDENTIAL TECH



'Stunning new flagship CI speaker range combines class-leading performance, unique technologies and extreme flexibility, for the ultimate integration experience'

HOME THEATER HIFI



300 SERIES

'Among the easiest to fit in-ceiling loudspeakers on the market'

HOME CINEMA CHOICE



'Reference-grade sound from an in-wall speaker'

AUDIOHOLICS

'My day-to-day music listening and home theater system, without regret'

HOME THEATER



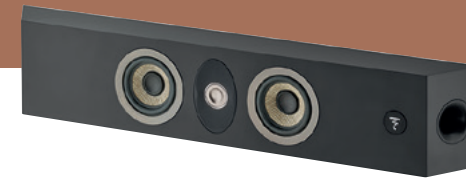
100 SERIES

'The sound is rich, the soundscape large and there is more than enough bass in them'

L&B TECH REVIEWS

'Focal's 100 ICLCR5 is a rare exception of an in-ceiling speaker that does a great job reproducing your home theater's front soundstage'

CRUTCHFIELD



ON WALL 300

'An acoustic wall art for audiophiles keen on discretion'

ON MAG

'They will delight the passionate ones who are looking for a high-end solution dedicated to all uses'

COBRASON BLOG

'The next best thing to in-wall speakers'

WHAT HIFI



ASTRAL 16



'An experience that was spine-tingling'

HOME CINEMA CHOICE

'This is high-end hardware fit for the finest of setups'

AVTECH MEDIA





DÔME FLAX

'Focal's Dôme Flax sound great anywhere'

DIGITAL TRENDS

'A lovely soundstage, fantastic neutrality, and great detail'

RESIDENTIAL SYSTEMS

'High-quality, ultra-compact, satellite style loudspeakers'

TRUSTED REVIEWS



SIB EVO

'An excellent immersive audio experience'

AVFORUMS



'Good clarity and excellent surround integration'

CNET



'Great solution for those looking for effective Dolby Atmos®'

TRUSTED REVIEWS



UNITI

'The looking is as impressive as the sound'

WHAT HI-FI



'Among a constellation of competitors, the Naim Uniti Nova is a shining star'

ROBB REPORT



'Pretty perfect. Cements Naim's reputation as the Aston Martin of the audio world'

FORBES



MU-SO

'The best wireless speakers deliver top sound quality'

T3



'Comfortably the best all-in one we looked at this year'

AV FORUMS



'Put simply, it's difficult to go back to any other wireless speaker after trying the Qb'

THE INDEPENDANT

COLLECTIONS

Combining performance and design, Focal's collections are a revelation, awakening the emotions through a supreme listening experience. And it doesn't matter where you are. At home with traditional and in-wall / in-ceiling loudspeakers, Home Cinema systems and open-back headphones; on the move with closed-back headphones and in-car kits; in studio with professional monitors; and even at sea with specialist yacht solutions.



Home Collection



Motorities Collection



Professional Collection

FOCAL *Powered by* naim

Enjoy an incredible sound experience

Find our products in 10,000 retail partner stores across the world, but also in our Focal Powered by Naim shops. These shops, dedicated to our brands, invite you to dive into our world, our savoir-faire and immerse yourself in the Focal & Naim sound.

ASIA

Bengaluru - Guangzhou
Seoul Gangnam-gu
Seoul Hanam

AUSTRALIA

Adelaide - Melbourne
Perth - Sydney

EUROPE

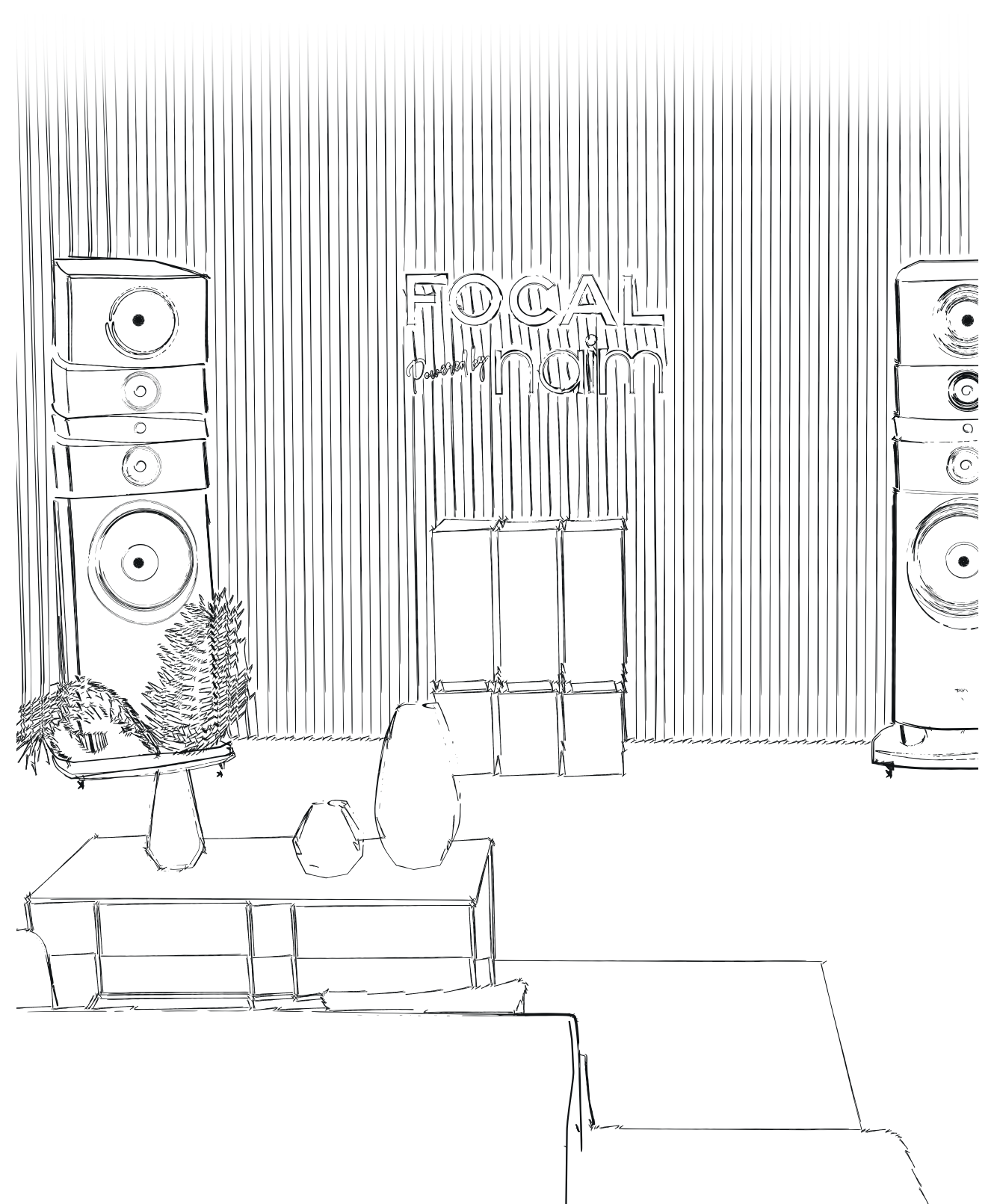
Cannes - Lyon -
Perpignan
Berlin - Bad Schwartau
Sevenoaks
Prague
Bucharest
Vilnius

CANADA

Saskatoon

USA

Austin
Houston
Miami





For more information, scan the QR code
or find us at:

www.focal.com



Focal JMLab®

BP 374 - 108, rue de l'Avenir - 42353 La Talaudière cedex - France - +33 (0) 477 435 700

Focal® is a registered trademark of Focal JMLab®, Naim® is a registered trademark of Naim Audio®.
Due to constant technological advances, Focal JMLab® and Naim Audio® reserve the right to modify prices and specifications without notice.
Non-binding pictures. Pictures : L'Atelier Sylvain Madelon / Envato Elements. SCAA/01/04/2022 - v2

