

CONSTRUCTION & OPERATION

Built-in Installation	✓
Flush Mount Depth to Kickplate	✓
304 Stainless Steel Interior	✓
Noise Level (dBA)	< 38
Durable Black Aluminum Door Frame	✓
Hettich® Soft Close Zero Clearance Hinge	✓
DOW DELTA-THERM™ High Density HFO Foam Insulation	✓
Custom Copper Evaporator	✓
Embraco® High Efficiency Variable Speed Inverter Compressor	✓
Energy Efficient Frost-Free Operation	✓
Stirling SmoothAir Variable DC Speed Blowers	✓
Stirling TempSync Monitoring System	✓
Door Ajar Chime	✓
Sabbath Mode	✓
Demo Mode	✓

INTERIOR FEATURES

High Definition TFT Display & Minimalistic Illuminated Control Panel	✓
Auto Gradual LED Interior Lighting	✓
Hettich® Smooth & Soft Close Full Extension Shelves	3
304 Stainless Steel Shelf Frames	✓
Tall Can Tempered Glass Shelf	✓
Quick-Adjust 304 Stainless Steel Shelf System	✓
Canadian Walnut Shelf Front with Stainless Steel Trim	✓
Refillable High Flow Carbon Filter	1

UPC

809854001900

EXTERIOR FIT & FINISH

Custom exterior panel & handle hardware	Not included
Reversible Door Swing (Factory Set RH)	✓
Smoked 3-layer Humidity Controlled Air Insulated Glass Door	✓
2 Layer Low-E UV Protected Glass	✓
Stirling Signature Kickplate & Ventilation Grill	✓
Anti-Tip Bracket	✓

TECHNICAL SPECIFICATIONS

Capacity (cu.ft./L)	5.3/150
Beverage Capacity	108+ cans
Energy Consumption (kwh/year)	134
ENERGY STAR/NRCan Certified	✓
Temperature Range	3-20°C
Refrigerant Type	R600a
Certification	CSA

PRODUCT DIMENSIONS*

W x H x D (mm)	595 x 868 x 604.45
W x H x D (inches)	23 7/16 x 34 3/16 x 23 13/16
Net Weight (kg)	68.8
Net Weight (lbs)	151.6

CARTON DIMENSIONS

W x H x D (mm)	673 X 673 X 952.5
W x H x D (inches)	26 1/2 x 26 1/2 x 37 1/2
Gross Weight (kg)	72.3
Gross Weight (lbs)	159.31

*Without panel



A 36 cans (12 oz/355ml)

B 49 bottles (12 oz/355ml)

C 36 cans (16 oz/473ml)

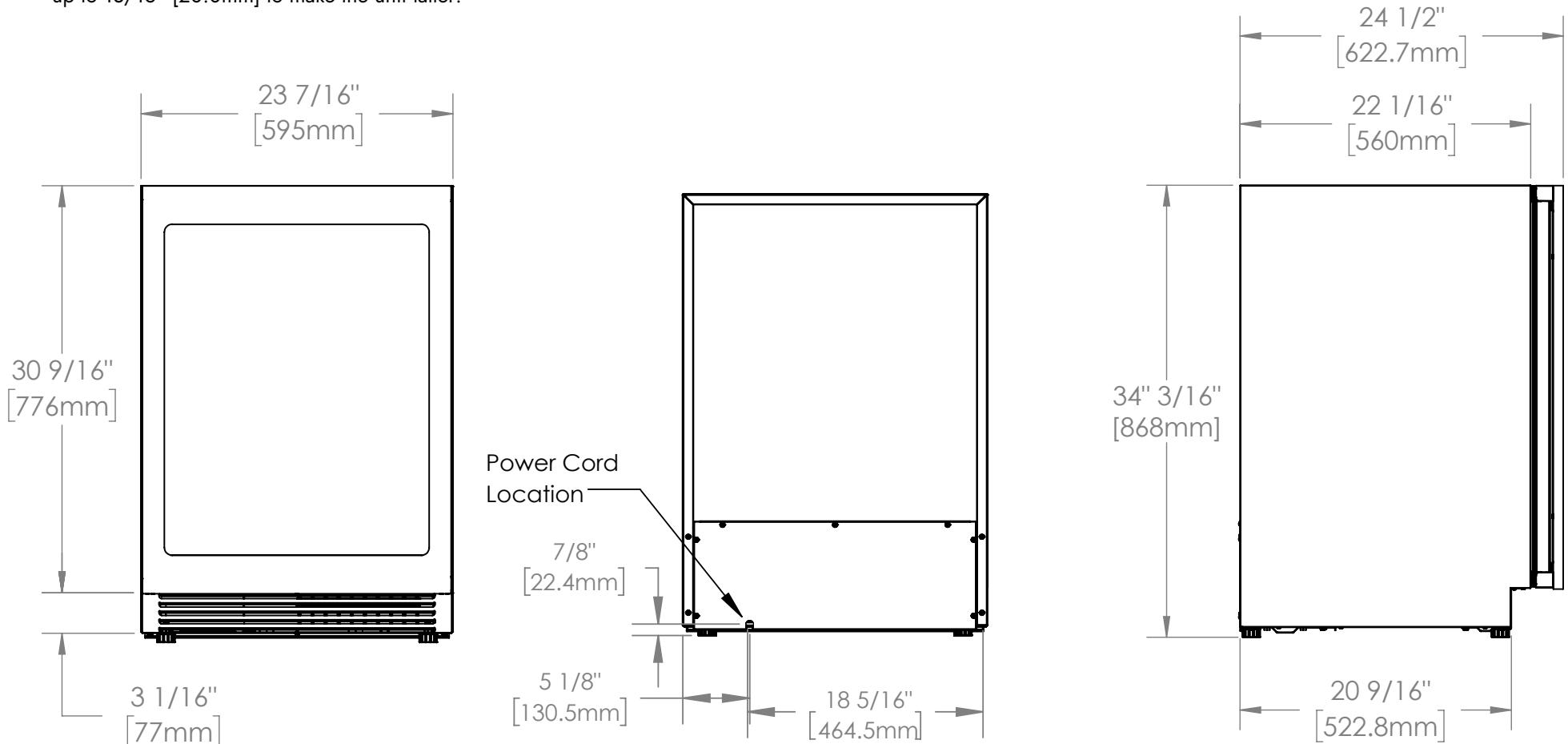
D 18 cans (12 oz/355ml)

E 6 wine bottles (750ml) or 18 cans

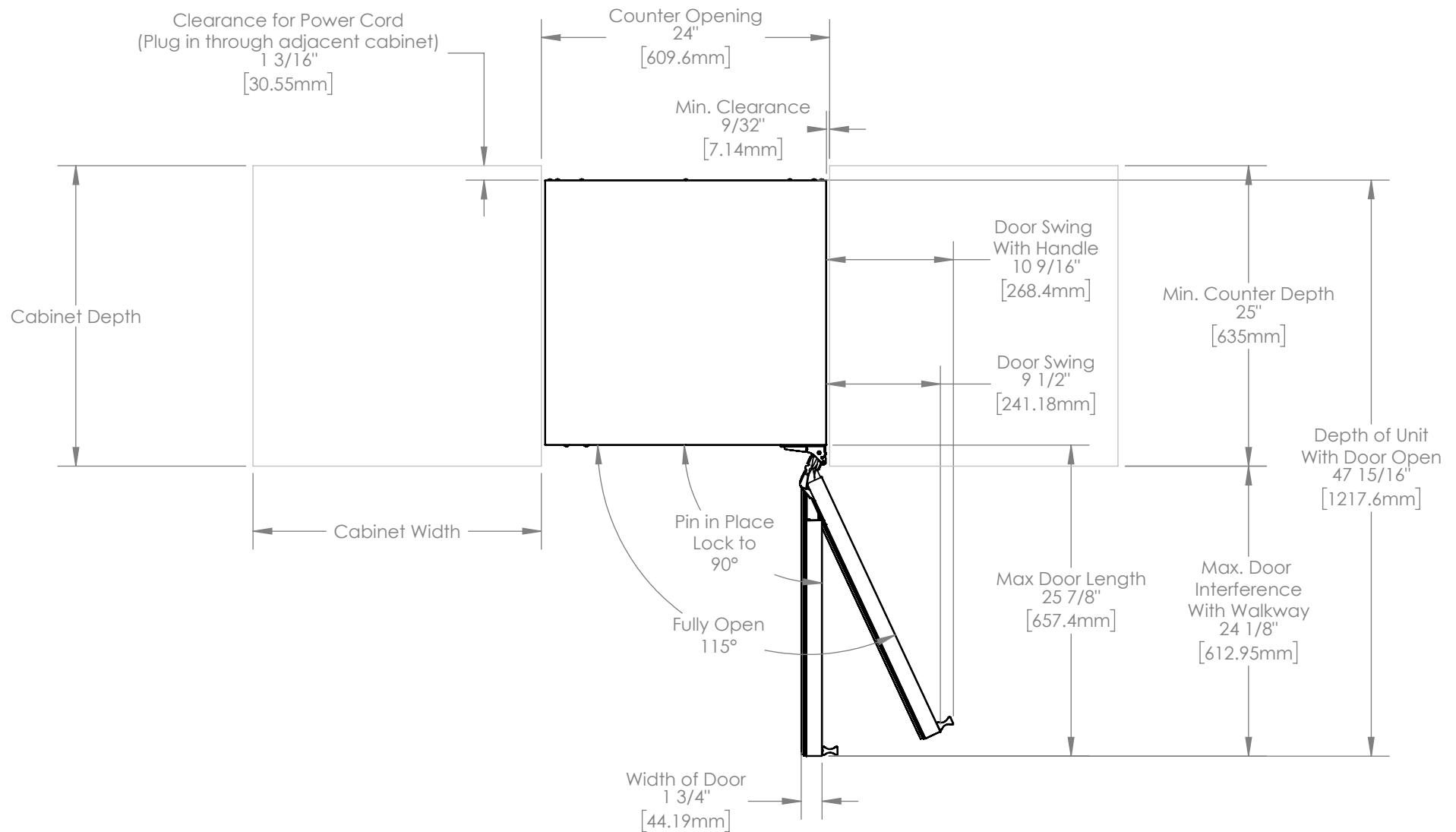
OR

Cabinet Dimensions

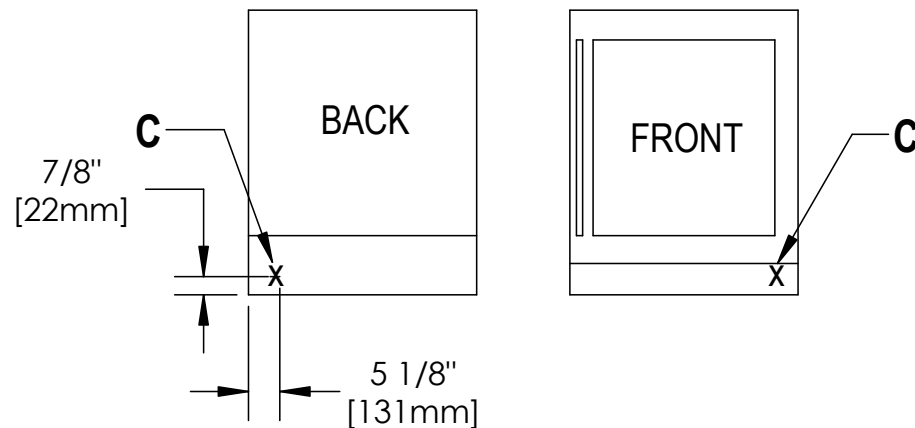
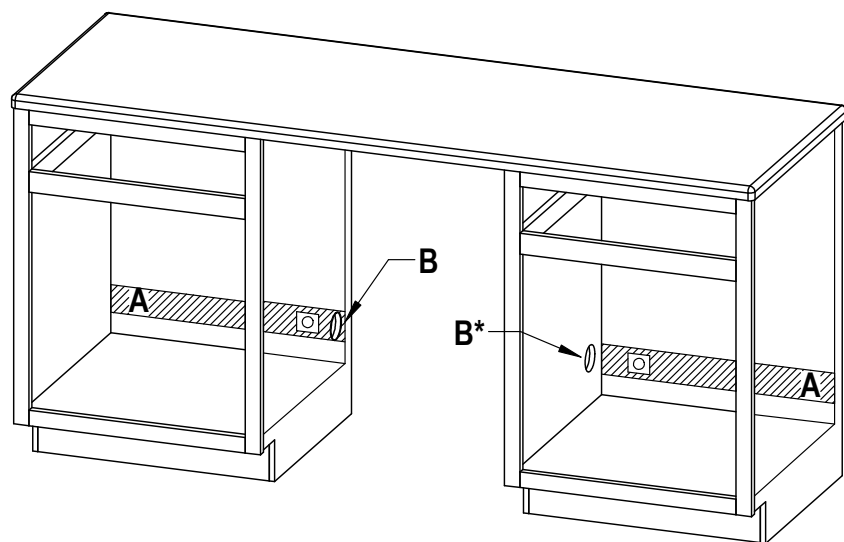
Note: With legs fully retracted the minimum overall height is 34 3/16" [868.0mm] from top to bottom. The legs can be extended up to 13/16" [20.0mm] to make the unit taller.



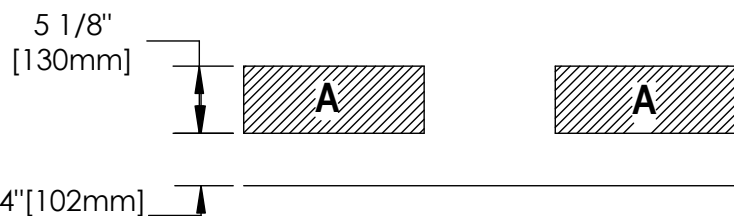
Open Door Dimensions



Electrical Outlet Rough-In Location



A: Recommended area for installation connection.



B: To route power cord to outlet - a 2 1/2" [63mm] diameter hole through wall of the adjacent cabinet is recommended.

*The cabinet on the right hand side (when facing the front of the cabinet) is the preferred location to wire through.

C: Location of power cord is on the back left of the unit

For flush installation it is recommended to plug in the power cord beside the unit, not directly behind.

Rough-In Dimensions

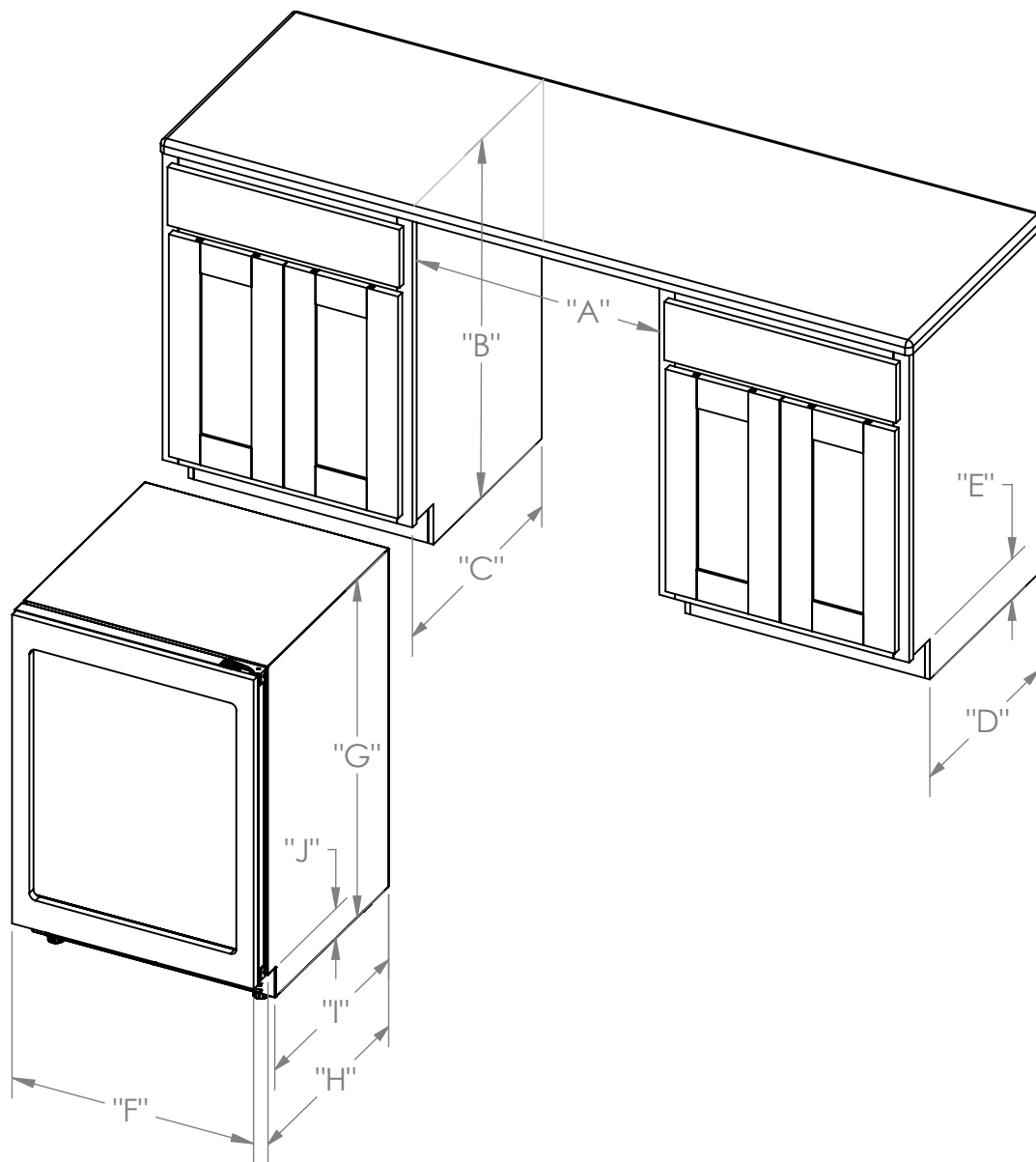
Rough-In Dimensions

A. Rough-In Width	24" [610mm]
B. Rough-In Height	34 1/2" [877mm] to 35 1/8" [892mm]
C. Rough-In Depth	26" [660mm]
D. Rough-In Depth to Kickplate	21 13/16" [554mm]
E. Rough-In Kickplate Height	3 1/16" [77mm]

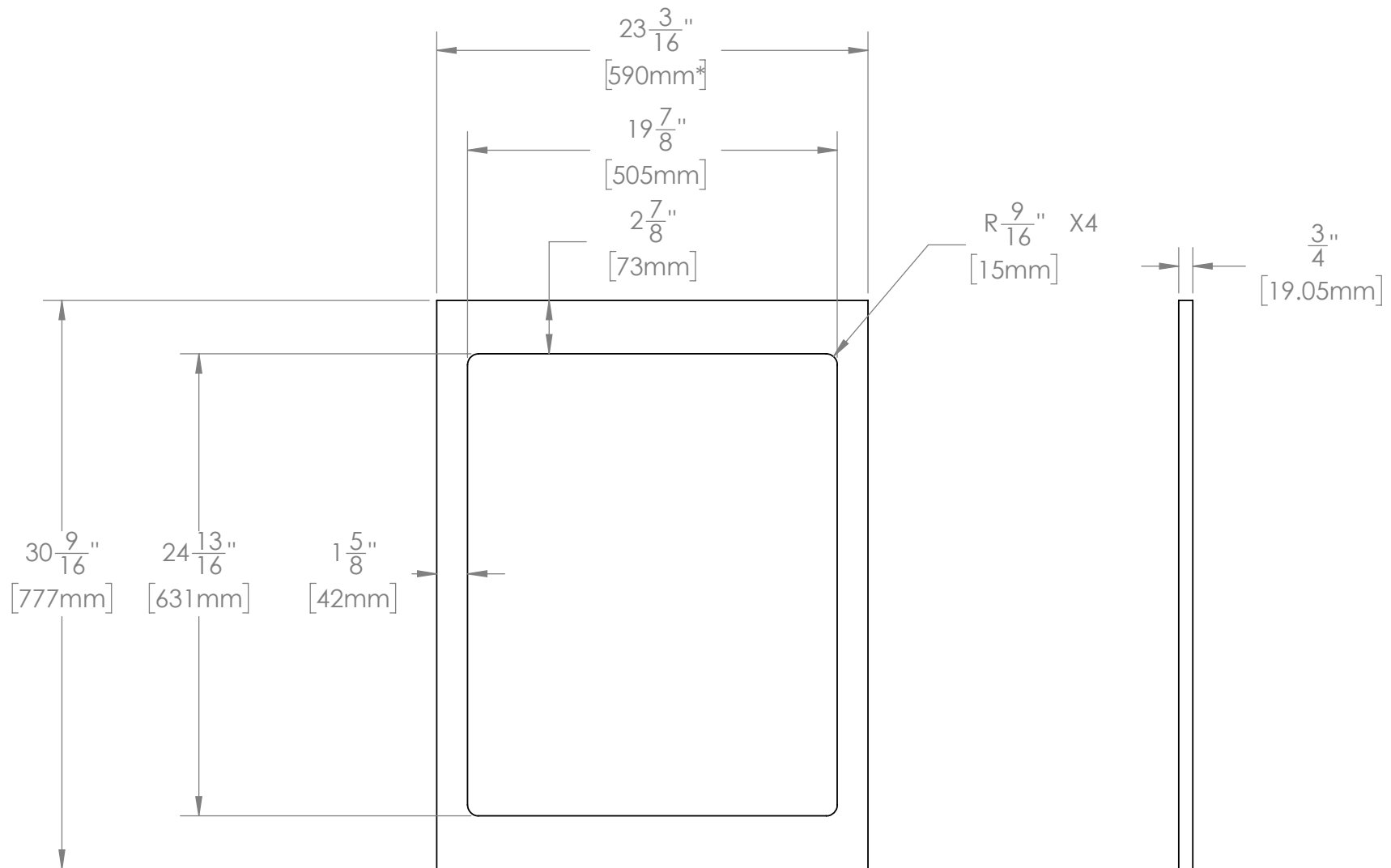
Product Dimensions

F. Width	23 7/16" [595mm]
G. Height	34 3/16" [868mm] to 35" [888mm]
H. Depth	24 3/4" [629mm]
I. Depth to Kickplate	20 9/16" [523mm]
J. Kickplate Height	3 1/16" [77mm]

*With 3/4" (19mm) thick Panel



Panel Ready Frame Dimensions



It is recommended the panel to be 590mm width but +/- 1mm tolerance is acceptable. Also, the aluminum frame can accommodate 5/8" thick panels as well, but will require shorter screws. Please discuss with your installer