
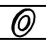
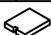
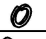


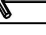



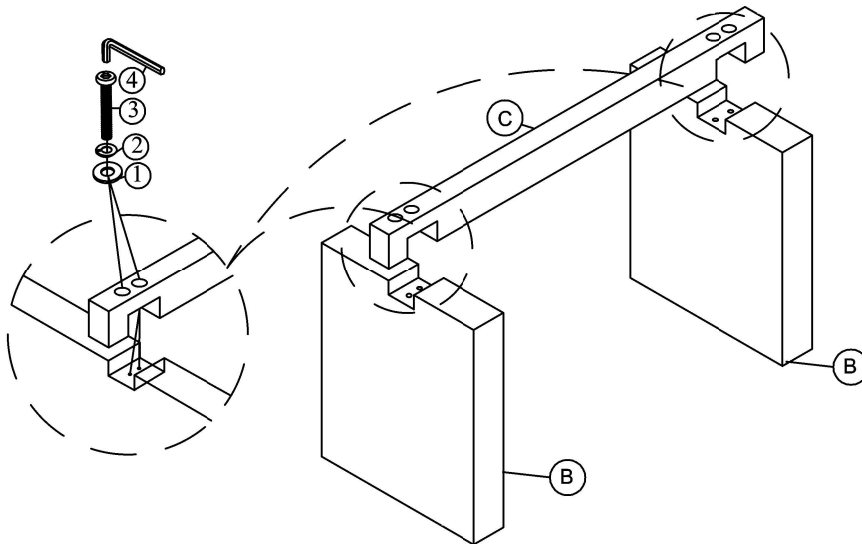
Assembly Instruction For Rectangular Dining Table D-10560-5-DTT/ D-10560-5-DTB

Caution: Please read instructions thoroughly before unpacking assembly parts. Sharp, exposed staple tips can cause injury, therefore, for your protection, please remove any exposed staples used in packing.

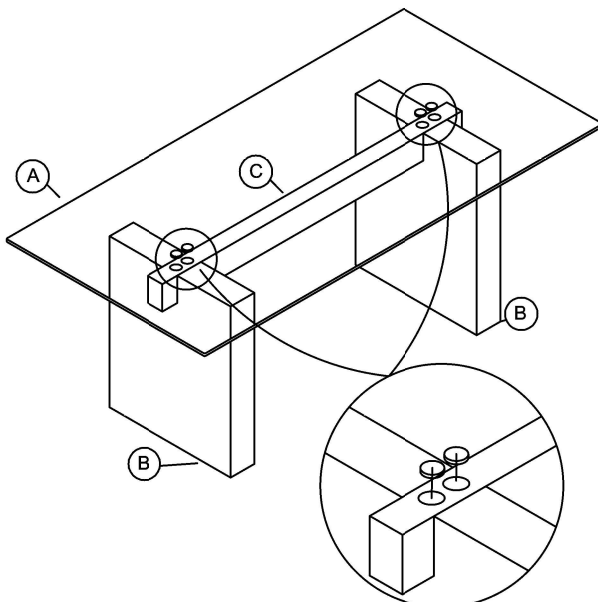
1. We recommend that you should assemble this product with the assistance of another person; this will make assembly easier, and will help to eliminate damage to the product or injury to persons during assembly.
2. Be sure to check all packing materials carefully for small parts that may have come loose inside the carton during shipment.
3. Please do not over tighten screws or bolts.
4. Please put all parts on a non-abrasive floor before assembly, and follow the assembly steps to assemble your newly purchased product correctly and efficiently.

PART LIST				HARDWARE LIST					
No.	PART DESC		CODE.	Q'TY	No.		HARDWARE DESC	CODE.	Q'TY
A		TOP IN GLASS	PD-10560-5-DTT	1	1		FLAT WASHER (Ø5/16")	PD-10560 -5 - DTHW	4
B		LEG FRAME	PD-10560-5-DTBLEG	2	2		SPRING WASHER (Ø5/16")		4
C		CENTER STRETCHER SUPPORT BAR	PD-10560-5-DTBSTR	1	3		ALLEN BOLT (Ø5/16**3")		4
					4		ALLEN KEY (Ø1/8")		1
 Only tighten all bolts when all bolts aligned with bolt inserts									

STEP:1



STEP:2



COMPLETED

