

## COMFORT SLEEPER® COLLECTION | SILVER

---

### **PALMER**



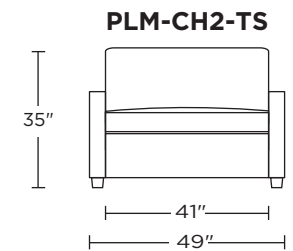
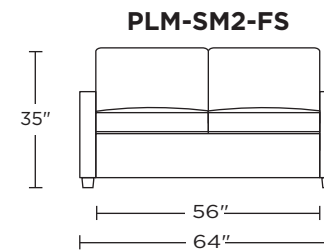
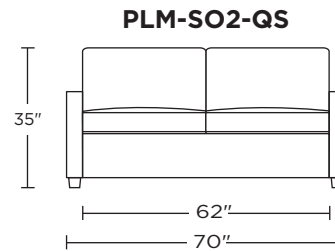
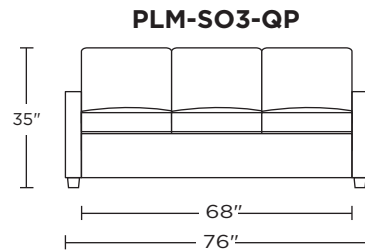
**AMERICAN**  
LEATHER®

# COMFORT SLEEPER BY AMERICAN LEATHER® SILVER

**PALMER**

## Standard Features:

- Premium high-density, high-resiliency foam
- Loose back and seat cushions
- Fall away back becomes mattress section
- Zero wall clearance
- Single needle top-stitch
- Limited lifetime warranty on frame
- Limited five-year warranty on mechanism
- Quick-ship delivery

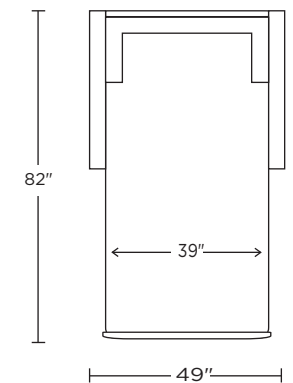
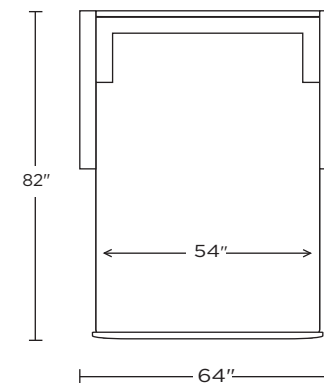
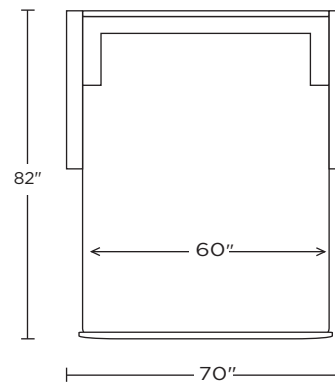
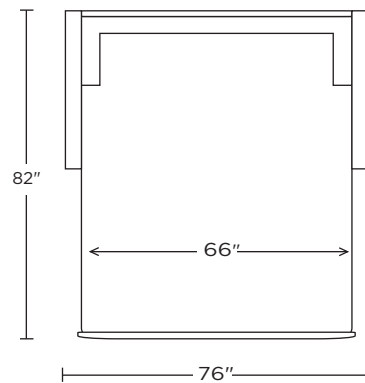


## Options:

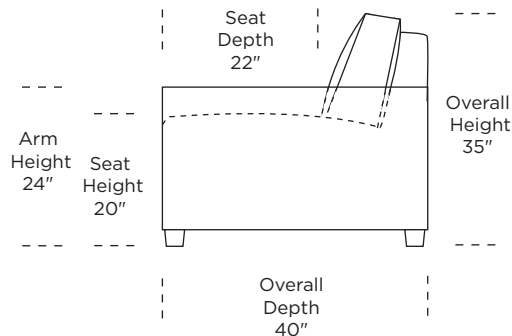
- Wood legs in Acorn, Espresso or Walnut finish

## Mattress Options:

- Four inches of high-density, high-resiliency foam
- Four inches of plush, high-density foam with a cooling gel topper



*Please use actual leather, fabric, Crypton®, Sunbrella® and Ultrasuede® swatches when specifying furniture as the colors shown may vary due to the printing process.*



Scale: 1/4 inch = 1 foot  
All dimensions are approximate and subject to change.  
Specify components from the sitting position.  
U.S. patents #6904628 & 8011034

V07.20.23