

ZUMMESH-5A-SW/ZUMMESH-5A-LV

Züm™ Switch and Dimmer
Installation Guide



Description

The Crestron® wireless wall-box switch (ZUMMESH-5A-SW) and dimmer (ZUMMESH-5A-LV) provide control of lighting loads. They feature a single rocker to enable on/off switching and dimming. The ZUMMESH-5A-LV has the ability to save one preset.

Züm Overview

A Züm space consists of one space, such as a board room or conference room, that is equipped with Züm mesh devices. The Züm mesh devices (i.e., dimmers, switches, keypads, and sensors) in the space provide control and communicate directly with each other without the need for a centralized gateway or processor.

If expanded functionality of the Züm space is desired, a ZUMMESH-NETBRIDGE (not included) can be added which provides centralized control and monitoring from a Crestron control system (not included).

NOTE: The ZUMMESH-NETBRIDGE requires a compatible J-box device (not included) to provide power.

Additional Resources

Visit the product page on the Crestron website (www.crestron.com) for additional information and the latest firmware updates. Use a QR reader application on your mobile device to scan the QR image.



ZUMMESH-5A-LV



ZUMMESH-5A-SW

Important Notes

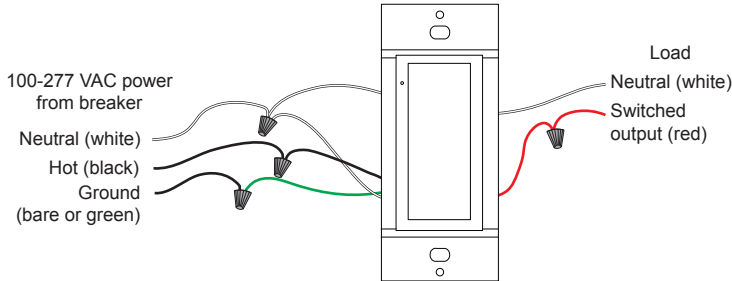
- WARNING:** To avoid fire, shock, or death, turn off the power at the circuit breaker or fuse and test that the power is off before wiring!
- NOTE:** Observe the following points.
- Neutral: The ZUMMESH-5A-SW and ZUMMESH-5A-LV require a neutral connection to operate.
 - Codes: Install in accordance with all local and national electrical codes.
 - Installation: A qualified electrician should install this product.
 - Wiring: Use copper wire only. For supply connections, use wire rated for at least 75 °C.
 - Temperature: For use where temperatures are between 32° to 104 °F (0° to 40 °C).
 - Electrical Boxes: Devices mount in standard electrical boxes. For easy installation, Crestron recommends using 3-1/2 in (89 mm) deep electrical boxes. Several devices can be installed in one electrical box (multigang). For a smooth appearance, one-piece multigang faceplates (not supplied) can be installed.
 - Switches: Mechanical 3- or 4-way switches do not work with the ZUMMESH-5A-SW or ZUMMESH-5A-LV.
 - Spacing: If mounting one device above another, leave at least 4-1/2 in (115 mm) vertical space between them.
 - Low-voltage Applications: Operation of a low-voltage circuit with all lamps inoperative or removed may result in current flow in excess of normal levels. For protection against transformer overheating and premature transformer failure, Crestron recommends the following:
 - Do not operate low-voltage circuits without operative lamps in place.
 - Replace burned-out lamps as quickly as possible.
 - Use transformers that incorporate thermal protection to prevent transformer failure due to overcurrent.

Installation

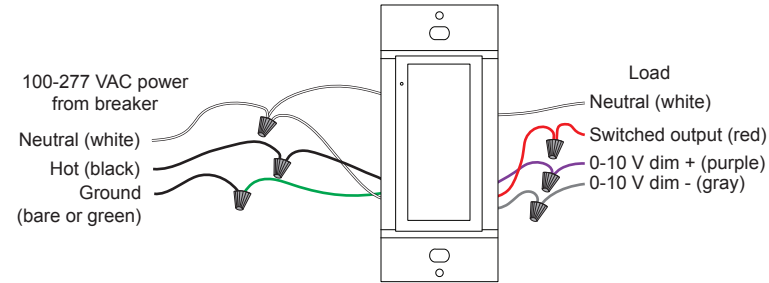
To install the ZUMMESH-5A:

- Turn the power off at the circuit breaker.
- Wire the device as shown in the following diagrams.

ZUMMESH-5A-SW Wiring



ZUMMESH-5A-LV Wiring



- Push all power wires back into the electrical box and fasten the device to the electrical box with the provided screws.
- Attach the faceplate (not included).
- Restore the power at the circuit breaker.

Multigang Installations

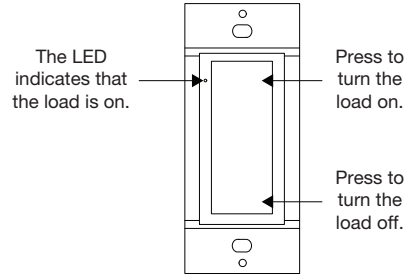
In multigang installations, several devices are grouped horizontally in one electrical box. For a smooth appearance, install a one-piece multigang faceplate (not included).

- NOTE:** When installing into a multigang box, do not fully tighten devices to the box until the faceplate has been aligned.
- NOTE:** Devices do not mount within a 2-gang mud ring. Use a standard 2-gang box.

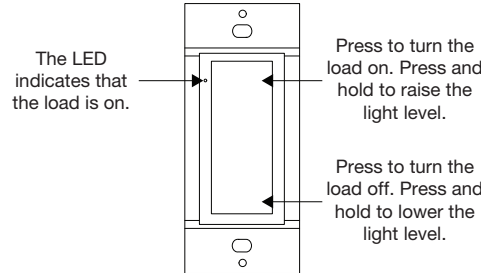
Operation

The ZUMMESH-5A-SW or ZUMMESH-5A-LV function as described below.

ZUMMESH-5A-SW Operation



ZUMMESH-5A-LV Operation



How to Set Up a Züm Space and Add Züm Devices

Once all devices are physically installed in a board room or conference space, a new Züm space can be created and devices added.

NOTE: Only set up one Züm space at a time.

NOTE: For simplified setup of a Züm space, use the Züm app on a mobile device.

Step 1 Create a New Züm Space

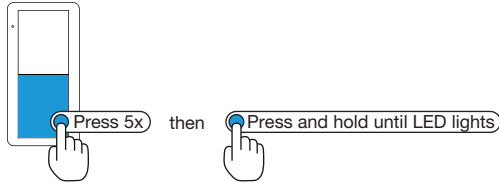
Creating a Züm space defines the area where the devices are located, such as a board room or conference room. A Züm space is created with a keypad, dimmer or switch, a J-box device, or an AV Bridge.

NOTE: Creating a Züm space can only be performed by one device in the space.

NOTE: A Züm space cannot be created from a battery-powered keypad.

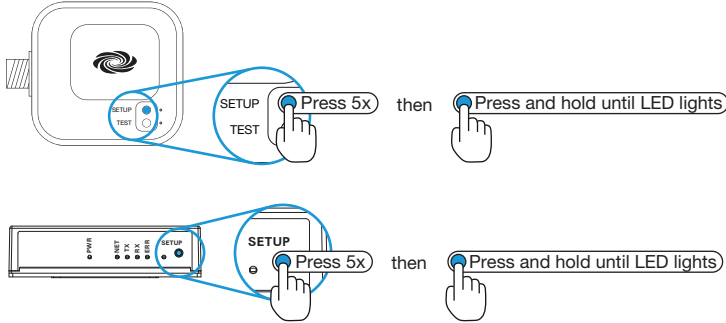
To create a new Züm space using a keypad, dimmer, or switch:

- Press the bottom button 5 times.
- Press and hold the button until the LED on the device lights (about 10 seconds). After approximately 3 seconds, the device LED begins slowly flashing. This indicates that the Züm space is now created and in Joining mode, allowing you to add devices.



To create a new Züm space using a J-box device or an AV Bridge:

- Press the **Setup** button 5 times.
- Press and hold the **Setup** button until the LED on the device lights (about 10 seconds). After approximately 3 seconds, the device LED begins slowly flashing. This indicates that the Züm space is now created and in Joining mode, allowing you to add devices.



NOTE: The device that is used to create the Züm space is automatically added to the space and does not need to be added in Step 2.

Step 2 Add the ZUMMESH-5A to the Züm Space

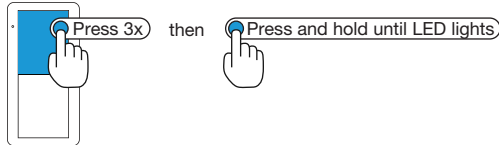
After a new Züm space is created, add the ZUMMESH-5A while the space is in Joining mode.

NOTE: A Züm mesh device can belong to only one space.

NOTE: Joining mode ends automatically after 4 minutes.

To add the ZUMMESH-5A:

- Press the top button 3 times.
- Press and hold the button until the LED on the ZUMMESH-5A lights (up to 10 seconds). The LED on the ZUMMESH-5A will start to flash slowly to indicate that it has joined the space.



Step 3 Complete Züm Space Setup

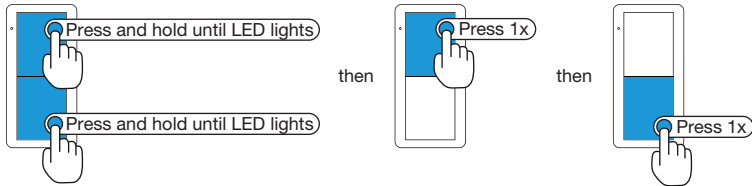
To finish creating a Züm space, press any button on a device that is part of the Züm space to exit Joining mode.

Add the ZUMMESH-5A to an Existing Züm Space

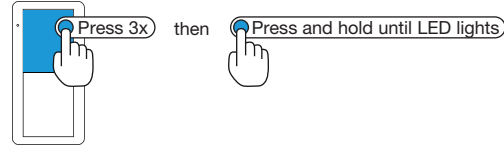
Add the ZUMMESH-5A to an existing Züm space by placing the Züm space in Joining mode.

Add the ZUMMESH-5A using a keypad, dimmer, or switch:

- Enter Joining mode.
 - Press and hold both the top and bottom buttons until the LED lights (about 5 seconds).
 - Press the top button once.
 - Press the bottom button once. The LEDs on all devices in the space (except battery powered devices) flash slowly to indicate that the devices are part of the space and that the space is in Joining mode.



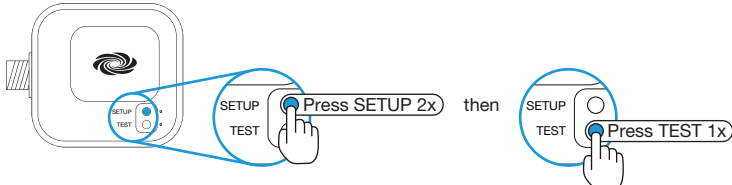
- Add the ZUMMESH-5A.
 - Press the top button 3 times.
 - Press and hold the button until the LED on the ZUMMESH-5A lights (up to 10 seconds). The LED on the ZUMMESH-5A will start to flash slowly to indicate that it has joined the space.



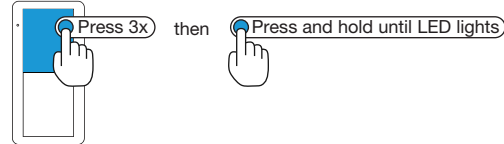
- Press any button on a device that is part of the Züm space to exit Joining mode.

Add the ZUMMESH-5A using a J-box device:

- Enter Joining mode.
 - Press the **SETUP** button 2 times.
 - Press the **TEST** button once. The LEDs on all devices in the space (except battery powered devices) flash slowly to indicate that the devices are part of the space and that the space is in Joining mode.



- Add the ZUMMESH-5A.
 - Press the top button 3 times.
 - Press and hold the button until the LED on the ZUMMESH-5A lights (up to 10 seconds). The LED on the ZUMMESH-5A will start to flash slowly to indicate that it has joined the space.



- Press any button on a device that is part of the Züm space to exit Joining mode.

Customize Local Scenes (ZUMMESH-5A-LV Only)

When pressed, the top button on the ZUMMESH-5A-LV recalls Scene 1 (90% load level). The light levels for the scene can be adjusted to match the needs in the space.

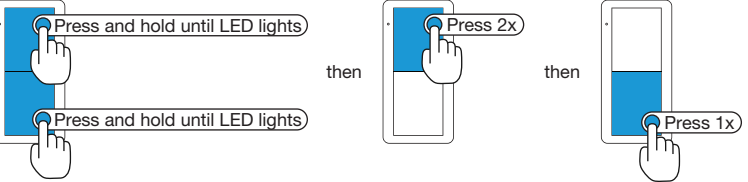
To customize Scene 1:

1. Enter Scene Setting mode.

a. Press and hold both the top and bottom buttons of the dimmer until the LED lights (about 5 seconds).

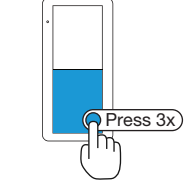
b. Press the top button two times.

c. Press the bottom button once. The LED on the dimmer flashes its LED two times every two seconds. Load controllers that are bound to the keypad flash their LED rapidly.



2. Adjust the lights in the room by pressing and holding the top button to raise the light level or the bottom button to lower the level.

3. Press the bottom button on the keypad 3 times to exit Scene Setting mode.



Factory Reset

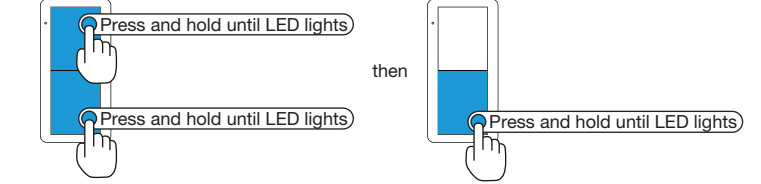
Perform a factory reset when the device is removed from the network or to remove the configuration settings. The device must also be factory reset if the device is being moved to a different system.

NOTE: New-in-box devices do not need to be factory reset before joining a system.

To factory reset the ZUMMESH-5A:

1. Press and hold the top and bottom buttons until the LED lights (about 5 seconds).

2. Press and hold the bottom button until the LED lights (about 10 seconds).



Specifications

The specifications for the ZUMMESH-5A are listed below.

SPECIFICATION	DETAILS
Load Ratings	
ZUMMESH-5A-LV	
Line/Load Voltage	100–277 VAC, 50/60 Hz
Load Rating	5 A
Idle Power Usage	<1 W
Dim Load Types	0-10 Volt LED drivers or fluorescent ballasts (4-wire)
DIM Control Output	0–10 VDC, 60 mA maximum sink or source
ZUMMESH-5A-SW	
Line/Load Voltage	100–277 VAC, 50/60 Hz
Load Rating	5 A, latching on/off relay
Idle Power Usage	<1 W
Load Types	LED, fluorescent ballast, incandescent, magnetic low-voltage, electronic low-voltage, neon/cold cathode, high-intensity discharge; Non-dim loads only
Environmental	
Temperature	32° to 104 °F (0° to 40 °C)
Humidity	10% to 90% RH (noncondensing)
Enclosure	1-gang mountable in a 3-1/2 in (89 mm) deep electrical box; Requires decorator-style faceplate (not included)