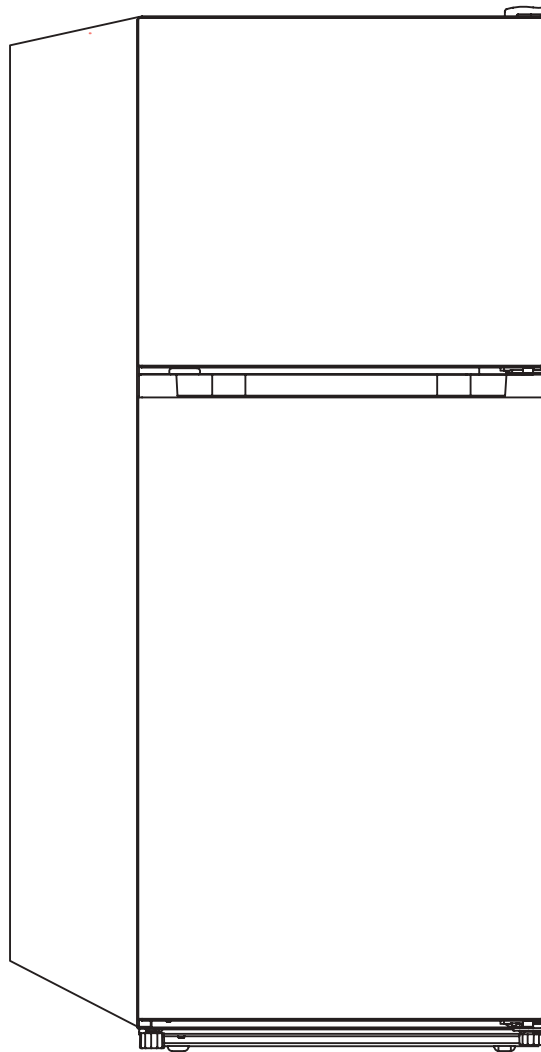




Frost Free Refrigerator



OWNERS'S USE & CARE MANUAL

EFF104W



Congratulations

Congratulations on the purchase of your new Epic Appliance!

To activate your Warranty, please register your appliance at **www.stirlingmarathon.com** or by completing and mailing the enclosed Warranty Registration Card. We are confident you will have years of hassle free enjoyment and ask that you please retain the Use & Care Guide for future reference and your safety.

Important Safety Instructions

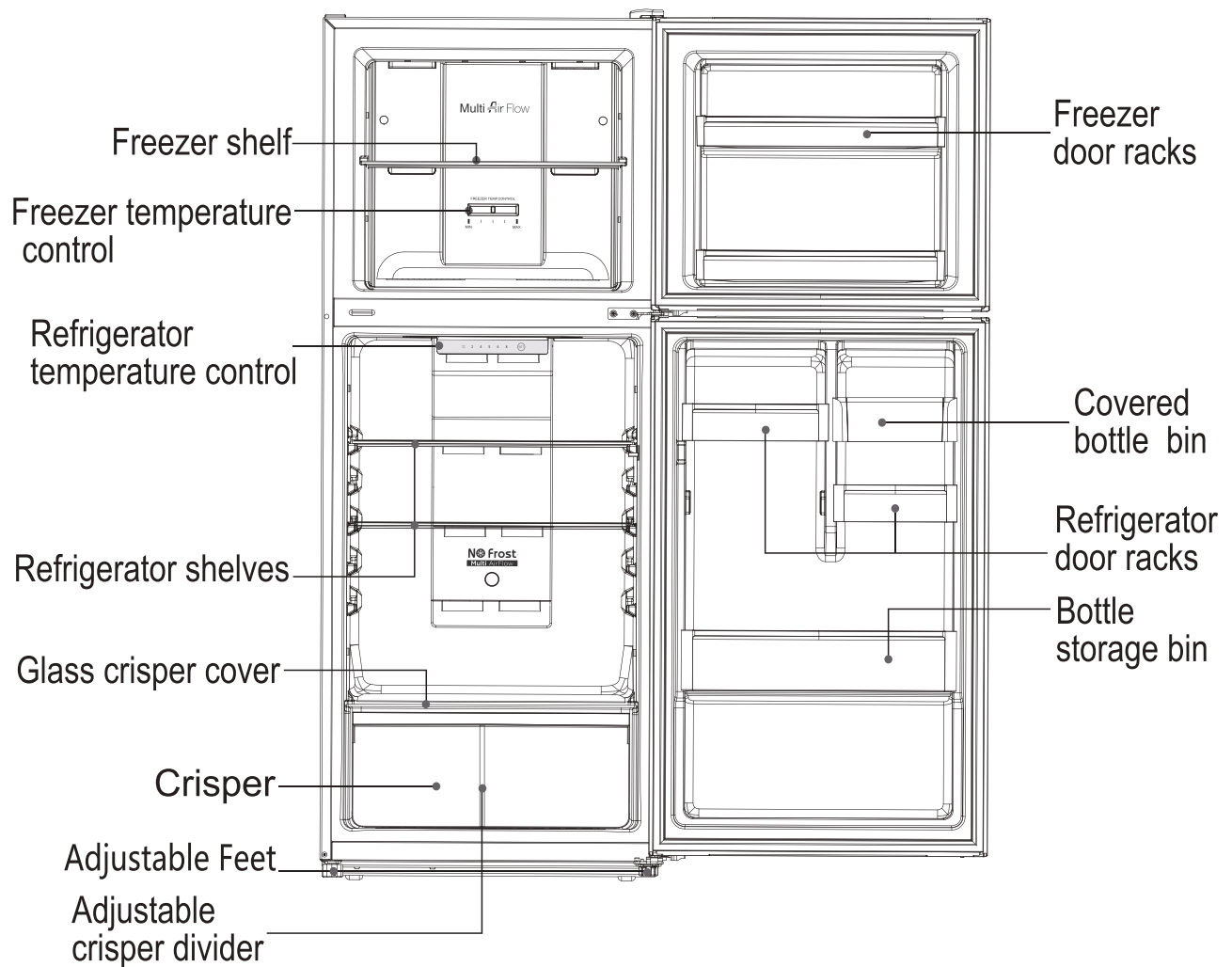
WARNING

To reduce the risk of fire, electrical shock, or injury follow these basic precautions when using your appliance.

- 1) WARNING----Keep ventilation openings, in the appliance enclosure or in the built-in structure, clear of obstruction.
- 2) WARNING----Do not use mechanical devices or other means to accelerate the defrosting process, other than those recommended by the manufacturer.
- 3) WARNING----Do not use electrical appliances inside the appliance
- 4) WARNING----DANGER: Never allow children to play with, operate, or crawl inside the appliance. Risk of child entrapment. Before you discard or recycle your old refrigerator or freezer
 - Completely remove the doors or lids
 - Leaves the shelves in place so that children not may easily climb inside
- 5) Always unplug before any maintenance or service on the appliance.
- 6) If the component part is damaged, it must be replaced by the manufacturer, its service agent or similar qualified persons in order to avoid a hazard.
- 7) Follow local regulations regarding disposal of the appliance due to flammable refrigerant and blowing gas. All refrigeration products contain refrigerants, which under the guidelines of federal law must be removed before disposal. It is the consumer's responsibility to comply with federal and local regulations when disposing of this product.
- 8) This appliance is intended to be used in household and similar environment such as:
 - staff kitchen, work shop, office and other working environments;
 - farm houses and by clients in hotels, motels and other residential type environments;
 - bed and breakfast type environments;
 - catering and similar non retail applications.
- 9) Do not store or use gasoline or any inflammable liquors and liquids inside or in the vicinity of refrigerator.
- 10) Do not use an extension cord with this appliance. If the power cord is too short, have a qualified electrician install an outlet near the appliance. Use of an extension can negatively affect the appliance's performance.



OVERVIEW

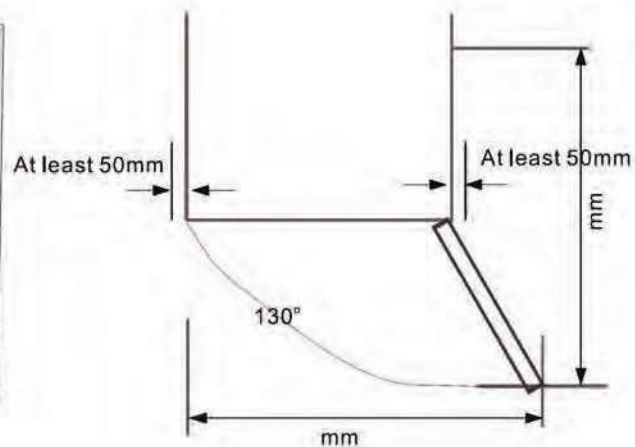
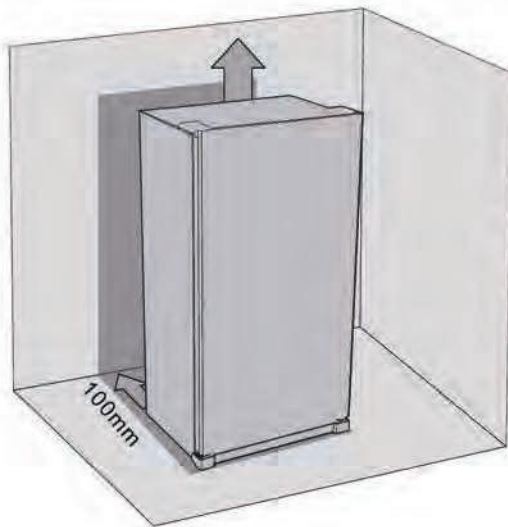


Note: Above picture is for reference only. The actual appliance maybe slightly different.

INSTALLATION

Space Requirement

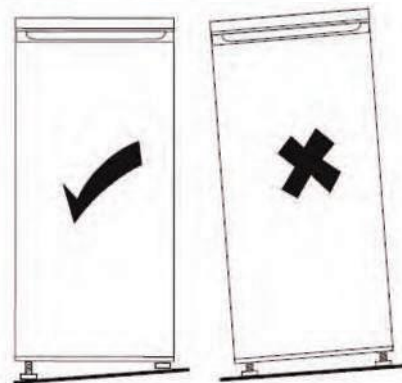
- Select a location without direct exposure to sunlight;
- Select a location with enough space for the refrigerator doors to open easily;
- Select a location with level (or nearly level) flooring;
- Allow sufficient space to install the refrigerator on a flat surface;
- Allow clearance to the right, left, back and top when installing. This will help reduce power consumption and keep your energy bills lower.



Levelling the refrigerator

To do this adjust the two levelling feet at front of the unit.

If the unit is not level, the doors and magnetic seal alignments will not be covered properly



Location

The appliances should be installed well away from sources of heat such as radiators, boilers, direct sunlight etc. Ensure that air can circulate freely around the back of the cabinet. To ensure best performance, if the appliance is positioned below an overhanging wall unit, the minimum distance between the top of the cabinet and the wall unit must be at least 100 mm. Ideally, the appliances should not be positioned below overhanging wall units. Accurate leveling is ensured by one or more adjustable feet at the base of the cabinet.

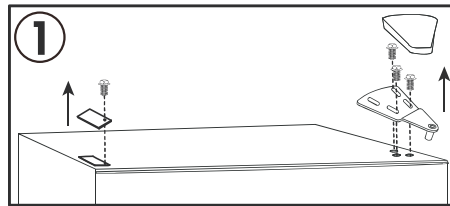
⚠ WARNING! It must be possible to disconnect the appliances from the mains power supply; the plug must therefore be easily accessible after installation.

Reverse Door

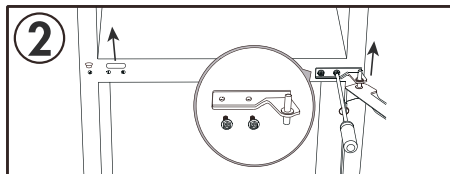
Tool required: Philips screwdriver, Flat bladed screwdriver,

- Ensure the unit is unplugged and empty.
- To take the door off, it is necessary to tilt the unit backwards. You should rest the unit on something solid so that it will not slip during the door reversing process.
- All parts removed must be saved to do reinstallation of the door.
- Do not lay the unit flat as this may damage the coolant system.
- It's better taht 2 people handle the unit during assembly.

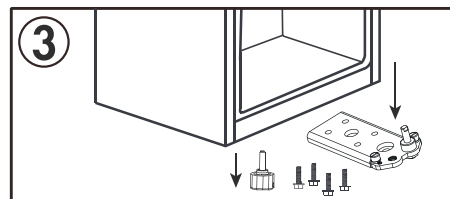
1. Remove the screw hole cover from the top left side of the cabinet. Remove the upper hinge cover and the upper hinge from the top right side of the cabinet. Remove the freezer door from the cabinet.



2. Remove the center hinge from the right side of the cabinet. Remove the refrigerator door from the cabinet. Remove the screw hole covers from the left side of the cabinet. Remove the refrigerator door from the cabinet.

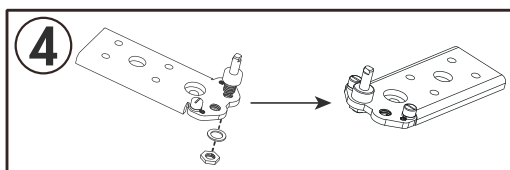


3. Remove the lower hinge from the bottom right side of the cabinet. Remove the adjustable foot from the lower left side of the cabinet.

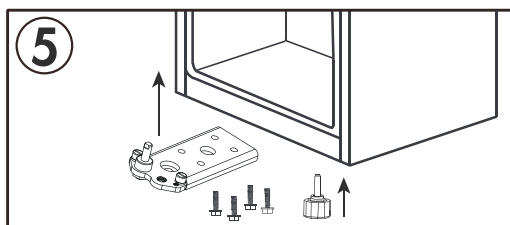


Reverse Door

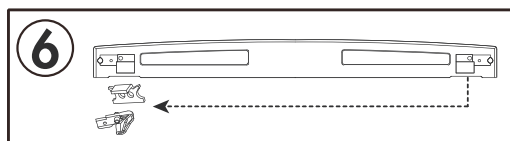
4. Remove the washer and nut that secure the hinge pin to the hinge, then remove the pin and screws. Install the pin and screws with the washer and nut into the left hole on the hinge.



5. Install the lower hinge onto the lower left side of the cabinet. Install the adjustable foot on the lower right side of the cabinet.

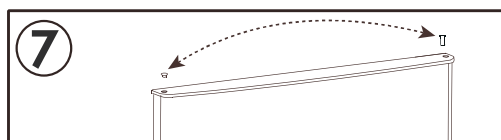


6. Remove the door stops from the lower right side of the refrigerator and freezer door and move them to the left side of the doors.

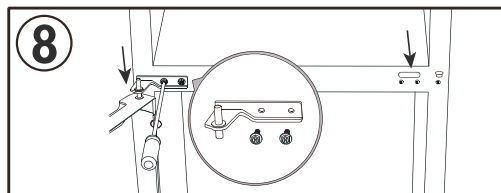


Reverse Door

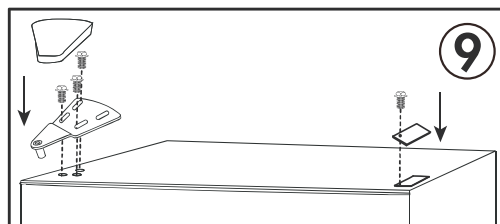
7. Move the door bushing from the top right side of the refrigerator door and remove the hinge hole cover from the top left side of the door. Exchange their positions.



8. Install the refrigerator door onto the cabinet. Install the center hinge on the left side of the cabinet. Install the screw hole covers on the right side of the cabinet.



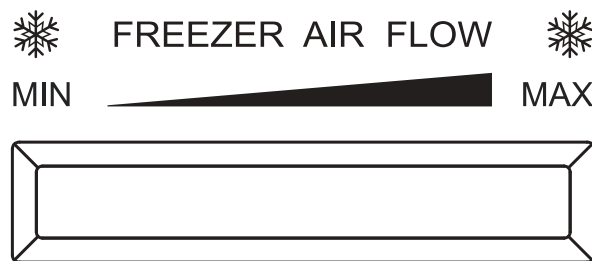
9. Install the freezer door onto the cabinet. Install the upper hinge on the top left side of the cabinet. Install the screw hole cover onto the top right side of the cabinet.



Using the Control Panel

Freezer compartment Temperature Setting

To adjust the temperature in the freezer section, do not adjust the refrigerator section temperature control, simply adjust the “slider” in the back of the freezer section. "MAX", is the coldest (lowest temperature) for the freezing section.



Refrigerator Compartment Temperature Setting

Temperature can be adjusted by pressing the SET key. In the case of temperature adjustment, the indicator light of the corresponding temperature mode gets flashing; and if no key operation within 5s, the setting will be validated. The temperature adjustment cycles in the following manner:
Mode 5→6→8→FAST COOL→2→4→5→6.



Refrigerator Temperature Control

Daily Use

First use

Cleaning the interior

Before using the appliance for the first time, wash the interior and all internal accessories with lukewarm water and some neutral soap so as to remove the typical smell of a brand new product, then dry thoroughly.

Important! Do not use detergents or abrasive powders, as these will damage the finish.

Freezing the interior

- The freezer compartment is suitable for freezing fresh food and storing frozen and deep-frozen food for a long time.
- Place the fresh food to be frozen in the bottom compartment.
- The maximum amount of food that can be frozen in 24 hours is specified on the rating plate.
- The freezing process lasts 24 hours: during this period do not add other food to be frozen.

Storing frozen food

When first starting-up or after a period out of use. Before putting the product in the compartment let the appliance run at last 2 hours on the higher settings.

IMPORTANT! In the event of accidental defrosting, for example the power has been off for longer than the value shown in the technical characteristics chart under “rising time”, the defrost food must be consumed quickly or cooked immediately and then re-frozen (after cooked).

Thawing

Deep-frozen or frozen food, prior to be used, can be thawed in the refrigerator compartment or at room temperature, depending on the time available for this operation. Small pieces may even be cooked still frozen, directly from the freezer. In this case, cooking will take longer.

Ice-Cube

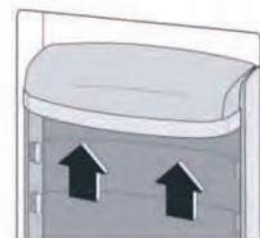
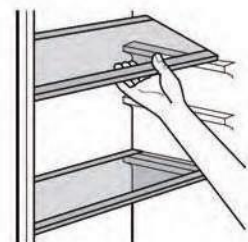
This appliances may be equipped with one or more ice-cube to produce ice.

Adjustable Glass

The walls of the refrigerator are equipped with a series of runners so that the shelves can be positioned as desired.

Adjusting the door bins

To permit storage of food packages of various sizes, the door balconies can be placed at different heights. To make these adjustments proceed as follows: gradually pull the bin in the direction of the arrows until it comes free, then reposition as required.



Daily Use

To help you make the most of the freezing process, here are some important hints:

- The maximum quantity of food which can be frozen in 24hrs. is shown on the rating plate;
- Only freeze top quality, fresh and thoroughly cleaned, foodstuffs;
- Prepare food in small portions to enable it to be rapidly and completely frozen and to make it possible subsequently to thaw only the quantity required;
- wrap up the food in aluminium foil or polythene and make sure that the packages are airtight;
- do not allow fresh, unfrozen food to touch food which is already frozen, thus avoiding a rise in temperature of the latter;
- lean foods store better and longer than fatty ones; salt reduces the storage life of food;
- water ice, if consumed immediately after removal from the freezer compartment, can possibly cause frost burns;
- it is advisable to show the freezing date on each individual pack to enable removal from the freezer compartment, in a timely manner;
- it is advisable to show the freezing date on each individual pack to enable you to keep tab of the storage time.

Hints for storage of frozen food

To obtain the best performance from this appliance, you should:

- Make sure that the commercially frozen foodstuffs were adequately stored by the retailer;
- Be sure that frozen foodstuffs are transferred from the food store to the freezer in the shortest possible time;
- Do not open the door frequently or leave it open longer than absolutely necessary;
- Once defrosted, food deteriorates rapidly and cannot be refrozen;
- Do not exceed the storage period indicated by the food manufacture.

Hints for fresh food refrigeration

To obtain the best performance:

- Do not store warm food or evaporating liquids in the refrigerator;
- Do not cover or wrap the food, particularly if it has a strong flavour.

Hints for refrigeration

Useful hints:

- Make (all types): wrap in polythene bags and place on the glass shelves above the vegetable drawer;
- For safety, store in this way only one or two days at the most;
- Cooked foods, cold dishes, etc. These should be covered and may be placed on any shelf;
- Fruit and vegetables: these should be thoroughly cleaned and placed in the special drawer(s) provided;
- Butter and cheese: These should be placed in special airtight containers or wrapped in aluminium foil or polythene bags to exclude as much air as possible;
- Milk bottle: these should have a cap and should be stored in the balconies on the door;
- Bananas, potatoes, onions and garlic, if not packed, must not be kept in the fridge.

Cleaning

For hygienic reasons the appliance interior, including interior accessories, should be cleaned regularly.



Caution! The appliances may not be connected to the mains during cleaning. Danger of electrical shock! Before cleaning switch the appliance off and remove the plug from the mains, or switch off or turn out the circuit breaker or fuse. Never clean the appliance with a steam cleaner. Moisture could accumulate in electrical components, danger of electrical shock! Hot vapors can lead to the damage of plastic parts. The appliance must be dry before it is placed back into service.

Important! Ethereal oils and organic solvents can attack plastic parts, e.g. lemon juice or the juice from orange peel, butyric acid, cleanser that contain acetic acid.

- Do not allow such substances to come into contact with the appliance parts;
- Do not use any abrasive cleaners;
- Remove the food from the freezer. Store them in a cool place, well covered.
- Switch the appliance off and remove the plug from the mains, or switch off or turn out the circuit breaker fuse;
- Clean the appliance and the interior accessories with a cloth and lukewarm water. After cleaning wipe with fresh water and rub dry;
- After everything is dry, plug the appliance into the mains power supply and then you may use the appliance.

Important Warning

- ⚠ Keep ventilation openings, in the appliance enclosure or in the built-in structure, clear of obstruction. Do not use mechanical devices or other means to accelerate the defrosting process, other than those recommended by the manufacturer.
- ⚠ Do not change or damage the refrigerant circuit.
- ⚠ Do not store explosive substances such as aerosol cans with a flammable propellant in this appliance.
- ⚠ During transportation and installation of the appliance, be certain that none of the components of the refrigerant circuit become damaged.
- ⚠ It is dangerous to alter the specifications or modify this product in any way. Any damage to the cord may cause a short circuit, fire and/or electric shock.
- ⚠ This appliance is intended to be used in residential household, office or light commercial applications such as Hotels and College Dorms.
- ⚠ All electrical components (plug, power cord, compressor and etc.) must be replaced by a certified service agent or qualified service personnel.
- ⚠ The refrigerant contained within the compressor of the appliance is isobutene (R600a) which is environmentally friendly but flammable.
- ⚠ Make sure that the power plug is not crushed or damaged at the back of the appliance. A crushed or damaged power plug may overheat and cause a fire.
- ⚠ Power cord must not be lengthened.
- ⚠ Make sure that you can come to the mains plug of the appliance. Do not pull the mains cable.
- ⚠ If the power plug socket is loose, do not insert the power plug. There is a risk of electric shock or fire. You must not operate the appliance without the lamp.
- ⚠ This appliance is heavy. Care should be taken when moving it.
- ⚠ Do not remove nor touch items from the freezer compartment if your hands are damp/wet, as this could cause skin abrasions or frost/freezer burns.
- ⚠ Avoid prolonged exposure of the appliance to direct sunlight.



Troubleshooting

You can solve many common refrigerator problems easily, saving you the cost of a possible service call. Try the suggestions below to see if you can solve the problem before calling for service.

<i>Problem</i>	<i>Possible Causes</i>
Refrigerator does not operate	<ul style="list-style-type: none">• Refrigerator unplugged• The circuit breaker is tripped/fuse blown.
Compressor turns on and off	<ul style="list-style-type: none">• The room temperature is warmer than normal• Door is left open or is frequently opened.• The refrigerator does not have the correct clearances.• The refrigerator has recently been disconnected for a period of time.
Refrigerator compartments are too warm	<ul style="list-style-type: none">• Temperature control is not set correctly.• Door is left open or is not set correctly.• The door gasket does not seal properly.• A large amount of warm or hot food was stored recently. Wait for the refrigerator to reach its selected temperature.• The refrigerator has recently been discontinued for
Vibrating or rattling (slight vibration is normal)	<ul style="list-style-type: none">• Leveling legs need adjusting.• Refrigerator is placed on an uneven or weak surface.• The refrigerator is touching the wall. Re-level the refrigerator and move it away from the wall.
Temperature of external refrigerator surface is warm	<ul style="list-style-type: none">• The exterior refrigerator walls can be as much as 30°F warm than room temperature.• This is normal while the compressor works to transfer heat from inside the refrigerator cabinet.
Moisture collects inside the refrigerator	<ul style="list-style-type: none">• Door is left open or is frequently opened.
Moisture forms on outside of refrigerator	<ul style="list-style-type: none">• Is normal in hot and humid weather. Air carries moisture into the refrigerator when doors are opened.
Bubbling or gurling sounds (like boiling water)	<ul style="list-style-type: none">• This is the normal sound of refrigerant (used to cool refrigerator) circulating throughout the system
Popping or crackling sounds when compressor comes on	<ul style="list-style-type: none">• This is the normal. Metal parts undergo expansion and contraction, like hot water pipes. The sound will level off or disappear as refrigerator runs.
The door will not close properly	<ul style="list-style-type: none">• The refrigerator is not on a level surface.• The gasket is dirty.• The storage basket is out of position.

For any questions or concerns, please contact us at customerservice@stirlingmarathon.com or visit us at www.stirlingmarathon.com



2 Year Limited Warranty

When operated and maintained according to the instructions in the Use & Care Guide, Marathon, a registered trademark of Stirling Marathon Limited, agrees to repair or replace this product for 2 years from the date of original purchase and/or agrees to pay for parts and service/labor required to correct defects in materials or workmanship. Any and all Service must be approved and provided by an Authorized Stirling Marathon Service provider. YOUR EXCLUSIVE REMEDY UNDER THIS LIMITED WARRANTY SHALL BE PRODUCT REPAIR OR REPLACEMENT AT THE SOLE DISCRETION OF STIRLING MARATHON LIMITED AS PROVIDED HEREIN. This limited warranty is valid only in Canada and the Continental United States with proof of original purchase and confirmed warranty registration.

TERMS OF WARRANTY BY PRODUCT

Refrigeration & Freezers	Less than 6 cu.ft.	Carry-In
Refrigeration & Freezers	Greater than 6 cu.ft.	In-Home
Electric & Gas Ranges	All Sizes	In-Home

How to Obtain Service

Carry-In: The original purchaser must deliver or ship the defective product to an authorized Stirling Marathon Service present a copy of the original bill of sale or Warranty Registration Confirmation.

In-Home: Contact Authorized Service Center and provide a copy of the Original bill of sale or Warranty Registration Card. If you are in a remote area or the closest Authorized Service Center is further than 100 km (60 miles), you will be required to deliver the appliance to the closest Service Center at your expense.

Stirling Marathon is not be responsible or liable for any spoilage or damage to food or other contents of this appliance, whether due to any defect of the appliance, or its use, whether proper or improper.

Items Excluded from Warranty

- Damages due to shipping damage or improper installation.
- Damages due to misuse or abuse.
- Content losses due to failure of the unit.
- Commercial or Rental Use Limited to 90 days Parts & Labor.
- Plastic parts such as door bins, panels, door shelves, racks, light bulbs, etc.
- Punctures to the evaporator system due to improper defrosting of the unit.
- Service or Repair by unauthorized service technicians.
- Service calls that do not involve defects in material and workmanship such as instruction on proper use of the product, door reversal or improper installation.
- Replacement or resetting of house fuses or circuit breakers.
- Delivery costs incurred as the result of a unit that fails.
- Expenses for travel and transportation for product service if your appliance is located in a remote area where service by an unauthorized service technician is not available.
- The removal and reinstallation of your appliance if it is installed in an inaccessible location or is not installed in accordance with published installation instructions.
- Liability under this warranty is limited to repair, replacement or refund. If a replacement unit is not available or the unit cannot be repaired, liability is limited to the actual.
- Purchase price paid by the consumer.
- This warranty applies only to the original purchaser and does not extend to any subsequent owner(s) and is non-transferable.
- No warranty or insurance herein contained or set out shall apply when damage or repair is caused by any of the following:
 - Accident, alteration, abuse or misuse of the appliance such as inadequate air circulation in the room or abnormal operating conditions (extremely high or low room temperature). Use for commercial or industrial purposes (i.e. If the appliance is not installed in a domestic residence). Fire, water damage, theft, war, riot, hostility, acts of God such as hurricanes, floods etc.
- Service calls resulting in customer education.
- Improper Installation (ie. Building-in of a free standing appliance or using an appliance outdoors that is not approved for outdoor application).

For Service or Assistance please contact us at: warranty@stirlingmarathon.com
or visit us at www.stirlingmarathon.com