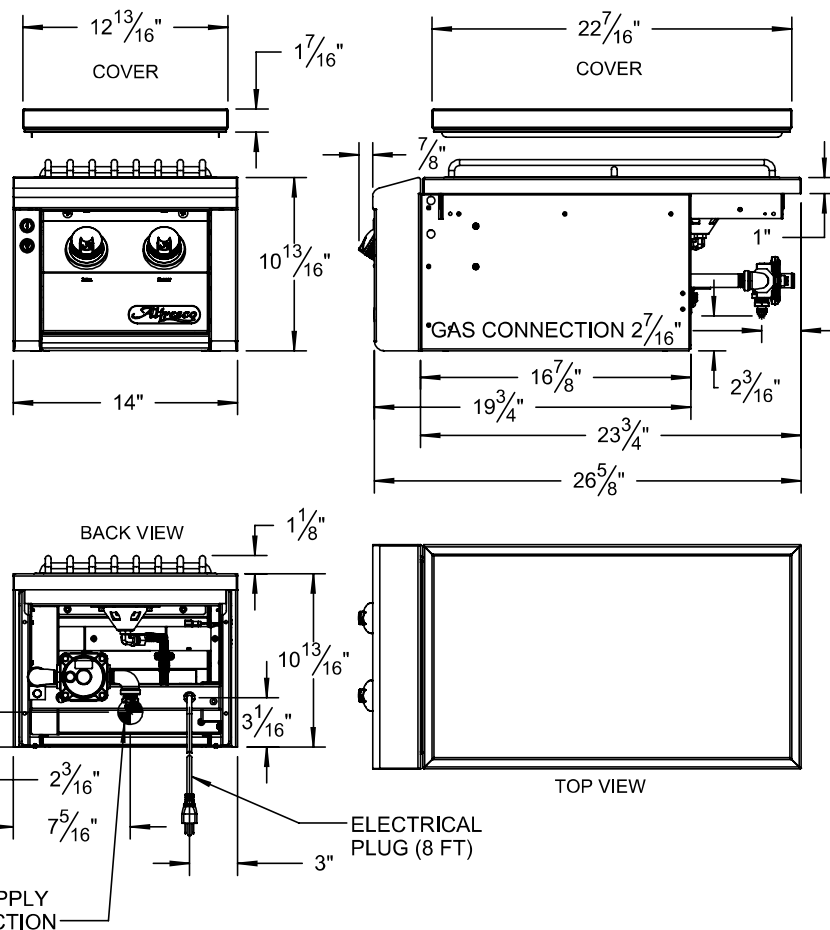
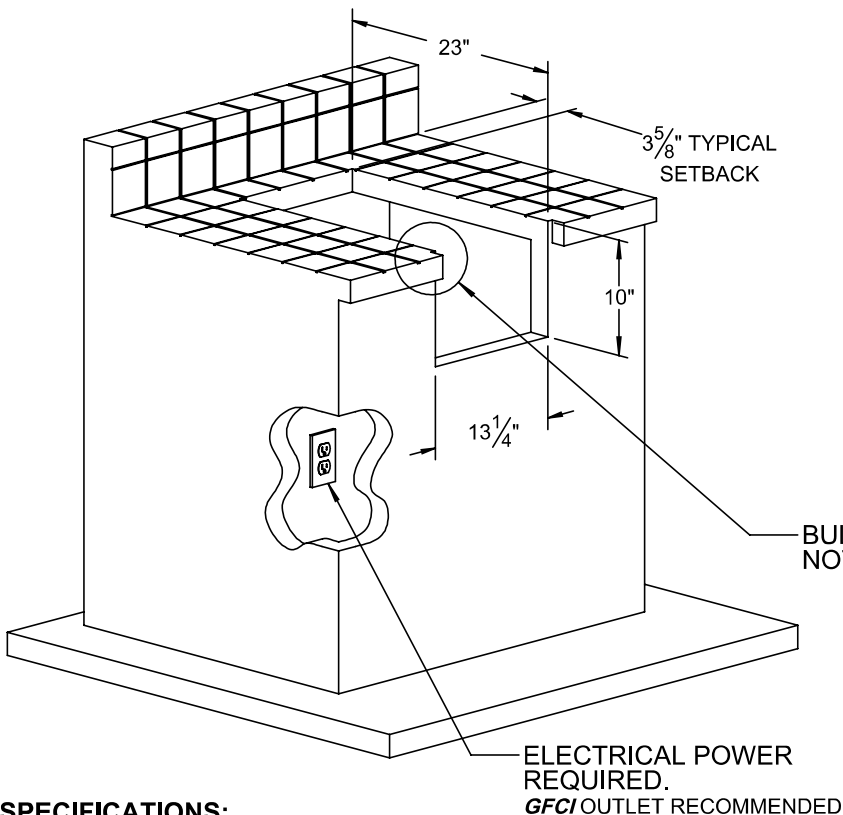


AXESB-2 TYPICAL INSTALLATION



COUNTERTOP CUTOUT REQUIREMENTS

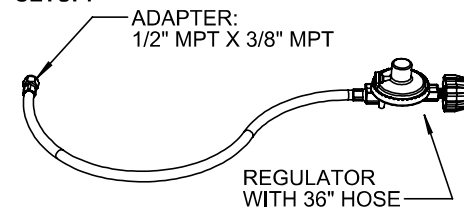
NOTE: A GAS LINE IS REQUIRED INSIDE THE COUNTER FOR OPERATION FOR LP-GAS SETUP SEE NOTE AT RIGHT. IT IS RECOMMENDED THAT A FLEXIBLE HOSE IS USE FOR NG-GAS SETUPS 2³/₁₆" TO EASE INSTALLATIONS.



SPECIFICATIONS:

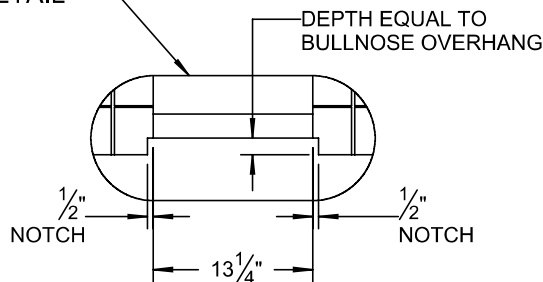
BTUH = 40,000
 FUEL = NG @ 5" W.C. OR LP @ 10" W.C.
 ELECTRICAL POWER = 115 VAC - 50/60 Hz. - 10 mA
 GAS CONNECTION = 1/2" NPT (NG) OR 3/8" ODF (LP)

LP GAS SETUP:



NOTE: STANDARD UNIT HAS A NATURAL GAS (NG) CONNECTION WITH 1/2" FPT FITTING.

IF LIQUID PROPANE (LP) OPTION IS ORDERED THE UNIT IS SUPPLIED WITH A REGULATOR, HOSE AND ADAPTER FITTING AS SHOWN.



Alfresco

SUPERIOR EQUIPMENT SOLUTIONS
 7039 EAST SLAUSON AVENUE
 COMMERCE, CA. 90040

THE INFORMATION CONTAINED IN THIS DRAWING IS THE SOLE PROPERTY OF SUPERIOR EQUIPMENT SOLUTIONS INC. ANY REPRODUCTION IN PART OR AS A WHOLE WITHOUT WRITTEN PERMISSION FROM SUPERIOR EQUIPMENT SOLUTIONS, INC. IS PROHIBITED.

DRAWN BY: ADRIAN CRISCI
 CREATED: 04/27/2018

PROJECT TITLE:

AXESB-2

DRAWING NO.: AXESB-2 (REV-A) SPEC SHEET

SHEET 1 OF 1

DRAWING TITLE:

AXESB-2 SIDE BURNER SPECIFICATIONS (SN: 18-00000 FORWARD)