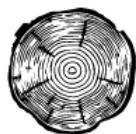


ARTISANS CHAIRSIDE TABLE



Whether the need is a matter of function or one of style, some spaces need a right-sized piece of furniture. A chairside table is often just what is called for. These tables are enough to help visually anchor a stand alone chair while offering a surface that can accommodate the basics. The Artisan's chairside table in Plank Road also has the ability to add a subtle sense of character to the room. It mixes solid wood with metal for a unique personality.

- One lower shelf
- New Zealand Pine



Solid Wood - Made using genuine solid wood construction

Dimensions

Height: 25"

Width: 16"

Length: 28"
