

ASSEMBLY

INSTRUCTIONS

MODEL : BE5032-18H FULL PANEL HEADBOARD
BE5032-17R TWIN/FULL SIDE RAILS
BE5032-21L LED LIGHT




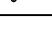


COMPONENT LIST

| No | Descriptions | Qty |
|----|------------------|-----|
| A | Headboard | 1 |
| B | Footboard | 1 |
| C | Headboard Leg | 2 |
| D | Bed Slat | 5 |
| E | Bed Slat Support | 5 |

COMPONENT LIST

| No | Descriptions | Qty |
|----|--------------|-----|
| F | Side Rail | 2 |

HARDWARE LIST (Packed inside Headboard)

| No | Descriptions | Dimension | Picture | Qty |
|----|---------------|-----------|---|-----|
| 1 | JCBC | M6 x 40mm |  | 4 |
| 2 | Spring Washer | M6 |  | 4 |
| 3 | Flat Washer | M6 |  | 4 |
| 4 | CSK Srew | M4 x 32mm |  | 18 |
| 5 | Allen Key | M4 x 65mm |  | 1 |
| 6 | Allen Key | M5 x 65mm |  | 1 |



Assembly Tool Not Included

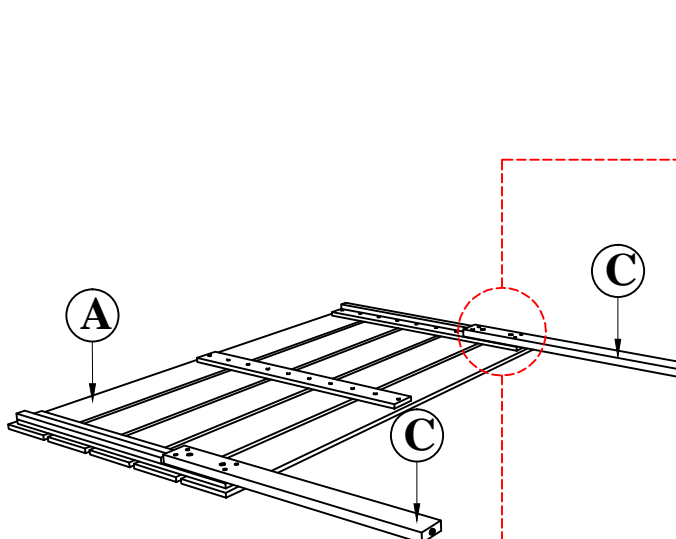
ASSEMBLY TIPS

1. Take Out hardware from box and sort by size.
2. Please check to see that all hardware and parts are present prior start of assembly.
3. Please follow attached instructions in the same sequence as numbered to assure fast and easy assembly.

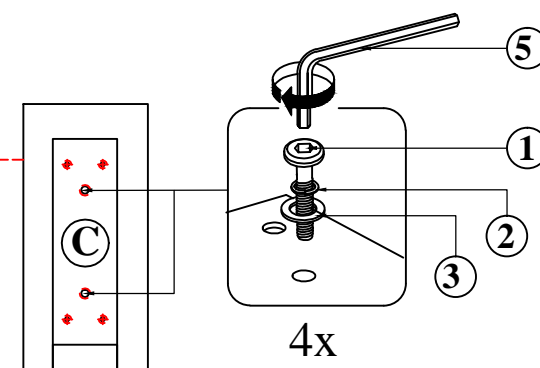
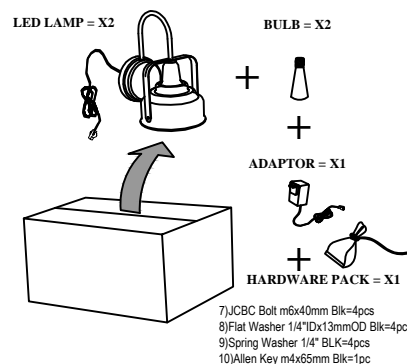
Warning!

1. Don't attempt to repair or modify parts that are broken or defective. Please contact the store immediately.
2. This product is for home use only and not intended for commercial establishments.

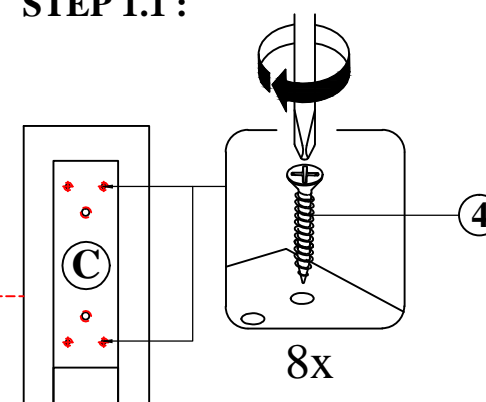
STEP 1



PLEASE REMOVE LED LAMP
COMPONENT FROM SAPARATED
BOX PROVIDED

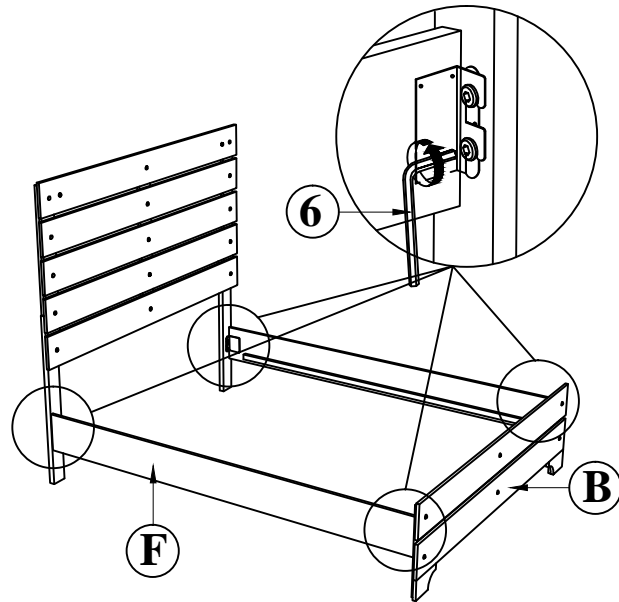


STEP 1.1 :

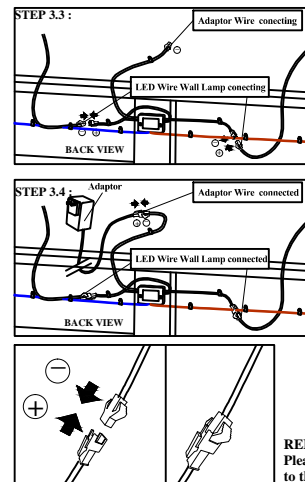


STEP 1.2 :

STEP 2

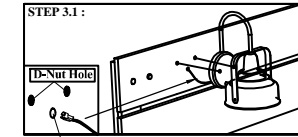


STEP 3

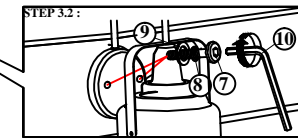


REMARK:
HARDWARE FROM HEADBOARD BOX

STEP 3.1:

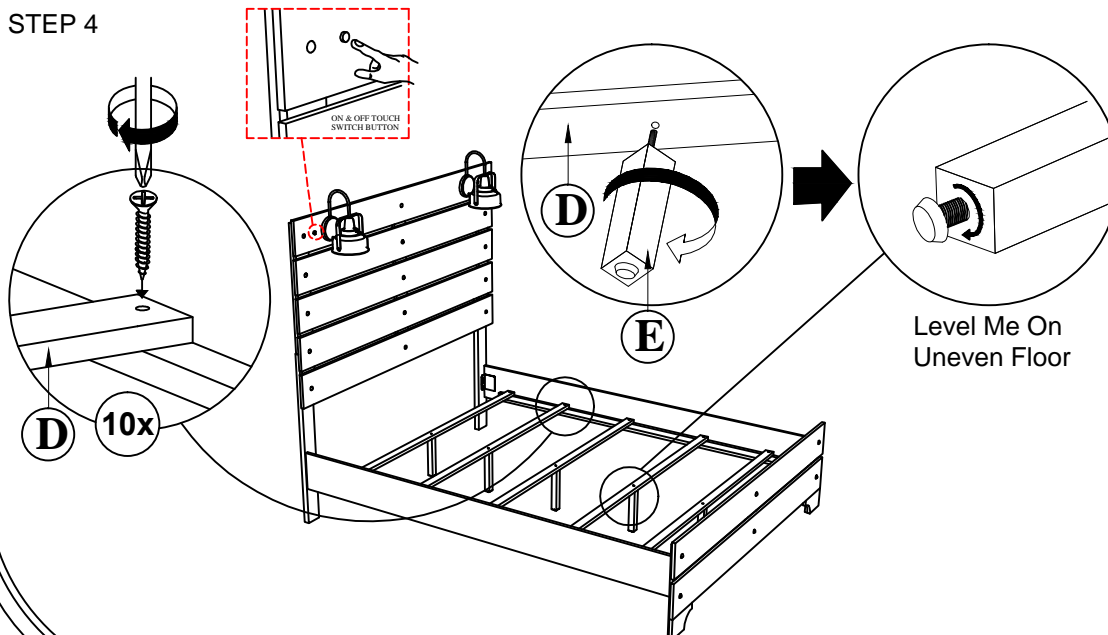


STEP 3.2:

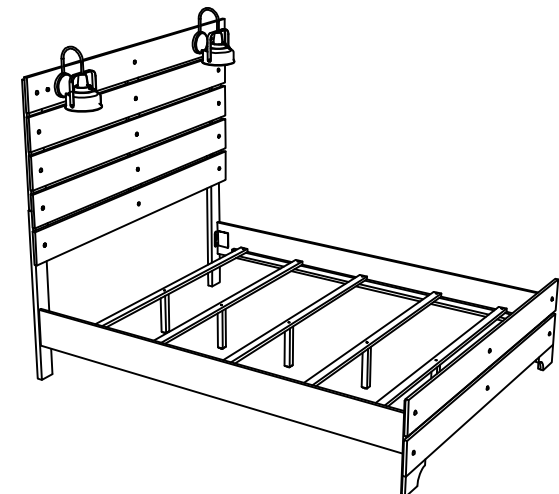


REMARK!
Please Connect them carefully to avoid damages
to the connector cord.

STEP 4



COMPLETE



COMPLETE SETUP

PAGE 2 OF 2