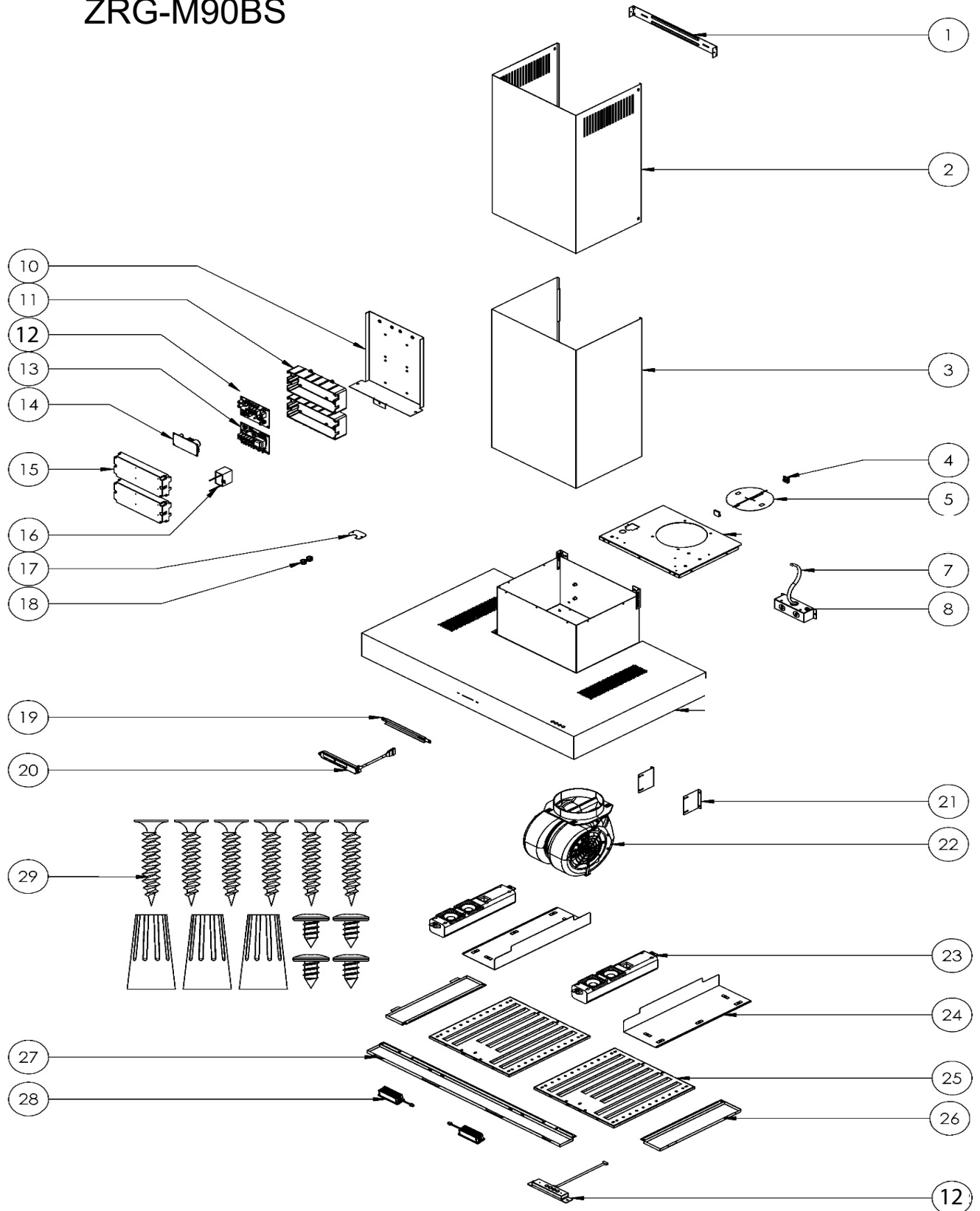


ZRG-E30BS ZRG-M90BS



Roma Groove

ZRG-E30BS, ZRG-M90BS

| Ref # | Part # | Description | Qty. |
|-------|----------|----------------------------|------|
| 1 | 54110062 | Duct Cover Wall Bracket | 1 |
| 2 | 50050085 | Upper Duct Cover | 1 |
| 3 | 50050086 | Lower Duct Cover | 1 |
| 4 | 50180002 | Damper Clip | 2 |
| 5 | 54060004 | 6 Inch Round Damper | 1 |
| 7 | 11030015 | Electrical Cord | 1 |
| 8 | 56200080 | Electrical Box | 1 |
| 10 | 54140288 | Electronics Bracket | 1 |
| 11 | 56200051 | Component Box | 1 |
| 12 | 11010115 | Bluetooth Control Assembly | 1 |
| 13 | 11010150 | Main Control Board | 1 |
| 14 | 12110021 | Transformer | 1 |
| 15 | 56210024 | Component Box Cover | 1 |
| 16 | 12050021 | Capacitor | 1 |
| 17 | 54150012 | Electrical Hole Cover | 1 |
| 18 | 54210024 | Electrical Hole Cover Ring | 2 |
| 19 | 54140319 | Switch Bracket | 1 |
| 20 | 11000168 | Switch Assembly | 1 |
| 21 | 54140135 | Motor Bracket | 2 |
| 22 | 12120089 | Motor | 1 |
| 23 | 11070001 | Speaker | 2 |
| 24 | 56210092 | Speaker Cover | 2 |
| 25 | 50210034 | Baffle Filter | 2 |
| 26 | 50120173 | Side Panel (ZRG-M90BS) | 2 |
| 27 | 50140172 | Front Trim (ZRG-E30BS) | 1 |
| 27 | 50140173 | Front Trim (ZRG-M90BS) | 1 |
| 28 | Z0B0048 | LumiLight LED, 6W | 2 |
| 29 | 05000144 | Hardware Packet | 1 |