

# On All Levels

## Caracole

Creating a stepped ombre effect, a fan-fold of plush velvet in varying tones wraps the back of this uniquely designed chair. Enveloping and elegant, it introduces a soft, feminine form to living and dining interiors. Tall, tapered legs add drama and rich contrast in a high-gloss, Chocolate Truffle finish. A standout on its own; even more dramatic in pairs. Encircle four or more around a dining table for an unforgettable presentation.



**SKU:** SGU-021-032-A

**Dimensions in Inches:** 24.0W × 27.75D × 33.0H

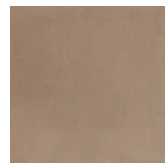
**Dimensions in CM:** 60.96W × 70.485D × 83.82000000000001H

### Finish:



Chocolate Truffle

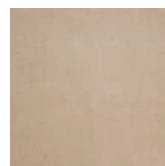
### Fabric:



2788-85CC-P Performance



2788-34CC-P Performance



2788-77CC-P Performance

**Construction:** Webbed seat. Plush poly foam cushion.