

Wrap It Up

Caracole

Introduce a sophisticated style to bedroom interiors with this architectural-inspired dresser, merging minimalism with elements of mid-century modern. Each drawer front is wrapped in a beautifully textured vinyl, embossed with a rivulet pattern like rain trickling down a windowpane. Metal trim in Champagne Gold artfully incorporates rounded pulls to seamlessly frame each drawer, designed to open and close with ease. A felt-lined top drawer is perfect for organizing cufflinks and jewelry.



SKU: CLA-020-056

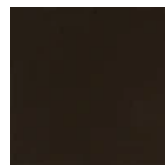
Dimensions in Inches: 36.0W × 19.0D × 51.0H

Dimensions in CM: 91.44W × 48.26D × 129.54H

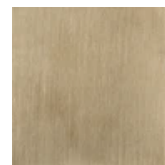
Features:

- Case finished in Dark Chocolate.
- Metal trim in Champagne Gold.
- Six drawers with vinyl fronts and undermount soft close guides.
- Top drawer with felt lined bottom.
- Interior in Dark Chocolate.
- Plinth base in Dark Chocolate.

Finish:



Dark Chocolate



Champagne Gold

Fabric:

