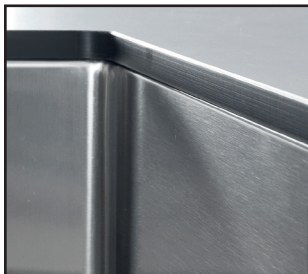


Foster Sinks

Quadra armored sink 1B 13"x18" UM - **1235 660**

HIGHLIGHTS



Foster brushed finish

The exclusive finishes on Foster steels are the result of diligent research, the aim being to achieve the perfect combination between good looks and functionality. A distinctive feature, a true trademark that makes our products stand out for the ease with which they can be cleaned.



Sturdy sink

The quality of Foster sinks is also in the thickness. All models use top grade stainless steel to manufacture "sturdy" sinks with an elegant design.



Diamond shaped bottom

The water drainage on the base of the sink is a minimalist but original design, with perfectly square edges and a diamond shaped bottom that allows perfect flow of water



Accessories

The concept of functionality is a key element for Foster. Each sink is matched by a series of practical and elegant accessories that transform the sink into a functional working center.



Undermount

The classy and contemporary way to install a sink, here proposed in a wide range of different models and designs.



Series	Quadra Armored
Model	Quadra armored sink 1B 13"x18" UM
material	AISI 304 stainless steel
finish	Satin finish
thickness	16 Gauge (1,5 mm)
Inset type	undermount
overall dimensions	15" x 19 1/2"
bowls dimensions	1 bowl 13" x 18"
bowls dept	10"
Cut out	17" x 18
waste fitting type	3 1/2" - with stainless steel basket
bowls bottom	x cross bending for easy water draining
Underside	protected with heavy duty undercoating
fixing system	undermount fixing kit (brass insert and clips)
Accessories:	1, T*, Z*, 2
accessories note	To use only with L3 chopping board

FAUCETS



Tube
cod. 8477 105



Hook
cod. 8479 105



Gamma 3 ways
cod. 8496 105

Highlights photographs are for illustration purposes only and may not reflect actual product.

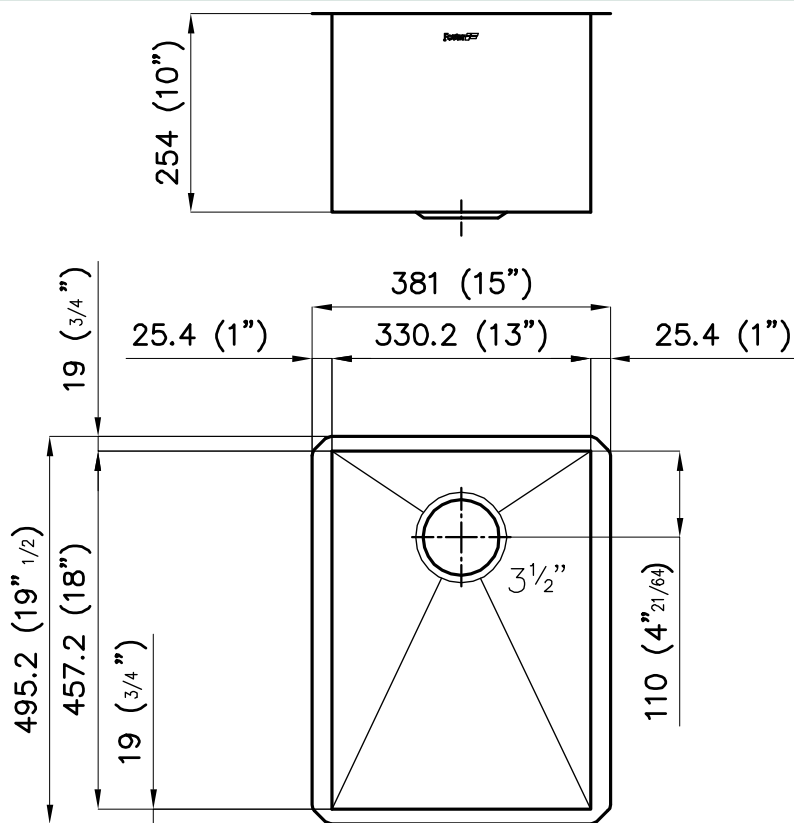
FOSTER MILANO INC.
6001 NORTH POWERLINE ROAD
FORT LAUDERDALE, FLORIDA 33309
info@foster-us.com
www.foster-us.com

Foster 
kitchen appliances

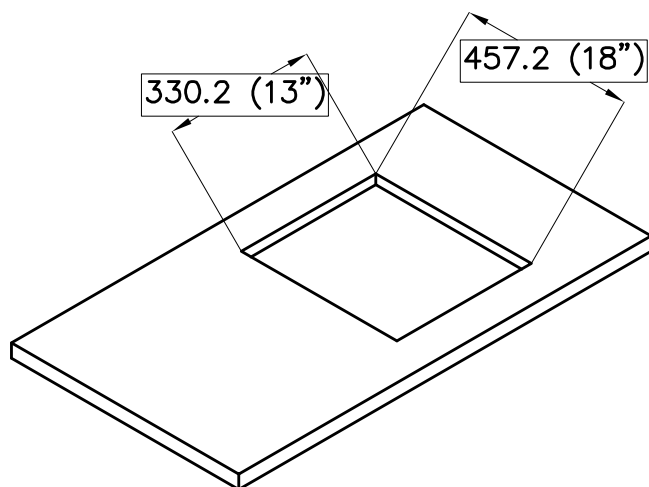
Foster Sinks

Quadra armored sink 1B 13"x18" UM - **1235 660**

DIMENSIONS



CUT OUT



ACCESSORIES



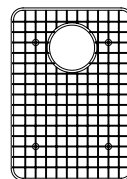
1
Chopping board



T
stainless steel
dishes holder



Z
stainless steel
perforated pan



2
grid