

Out & About

Caracole

Designers love a nest of tables and with these, the possibilities are endless. The three tables are each a different size and shape. The largest table is a rectangular shape with a half circle on one side, which we thought would make it appropriate for a small lamp table. The middle table is round and the smallest table is a square. A slightly splayed Satin Ebony leg miters up into the Taupe Silver Leaf top for a sharp architectural detail.



SKU: CON-SIDTAB-004

Dimensions in Inches: 22.0W × 21.0D × 27.0H

Dimensions in CM: 55.88W × 53.34D × 68.58H

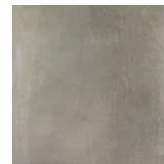
Features:

- Three tables.
- Taupe Silver Leaf top with Satin Ebony legs.

Finish:



Satin Ebony



Taupe Silver Leaf

Construction: Table A: 22"W x 21"D x 27"H.
Table B: 18" dia x 25"H. Table C: 11.75"W x 11.75"D x 22.75"H.