

DIN-BLOCK

DIN Rail Cresnet Distribution Block

The DIN-BLOCK is a DIN rail-mounted Cresnet distribution block designed to facilitate the termination of Cresnet wiring at a head end or distribution point. DIN rail mounting enables modular installation alongside Crestron DIN Rail lighting and automation control modules and other third-party DIN rail mountable devices.

Cresnet® Distribution

Cresnet is the communications backbone for Crestron lighting modules, wall box dimmers, shade controllers, thermostats, keypads, touchpanels, and many other devices. This flexible 4-wire bus allows for combinations of homerun and daisy-chain wiring, and the DIN-BLOCK provides a simple means for connecting up to 12 separate Cresnet cables in parallel as part of any-sized network.

Cresnet Power Distribution

In addition to data, Cresnet carries 24 Volts DC for powering the devices connected to it. The Cresnet ports on the DIN-BLOCK are arranged into 2 separate power groups, providing an easy way to manage the distribution of power for a complete Cresnet network. A separate power supply may be dedicated to each group, or a single supply can be connected to both groups as needed. Each group supports up to 75 Watts.

DIN Rail Installation

The DIN-BLOCK is designed to snap onto a standard DIN rail for installation in a wall mount enclosure or mounted on a wall



SPECIFICATIONS

Connections

POWER A: (6) 4-pin 3.5mm detachable terminal blocks, paralleled;
Power Group A Cresnet distribution ports;
POWER B: (6) 4-pin 3.5mm detachable terminal blocks, paralleled;
Power Group B Cresnet distribution ports;
Note: 'Y', 'Z', and 'G' terminals are paralleled between power groups

LED Indicators

POWER A - B: (2 green) Indicate Cresnet power present at any NET port of each corresponding power group
Y, Z: (2 red) Indicate Cresnet Y and Z data activity at any NET port

Power Requirements

Cresnet Power Usage: 0.3 Watts (0.01 Amp @ 24 Volts DC)

Environmental

Temperature: 32° to 104°F (0° to 40°C)
Humidity: 10% to 90% RH (non-condensing)
Heat Dissipation: 1 BTU/hr

DIN-BLOCK

DIN Rail Cresnet Distribution Block

Enclosure

Light gray polycarbonate housing with polycarbonate label overlay, UL94

V-0 rated, 35mm DIN EN 60715 rail mount, DIN 43880 form factor for

enclosures with 45mm front panel cutout, occupies 6 DIN module spaces

(108mm)

Dimensions

Height: 3.71 in (94.2 mm)

Width: 4.18 in (106 mm)

Depth: 2.29 in (58.0 mm)

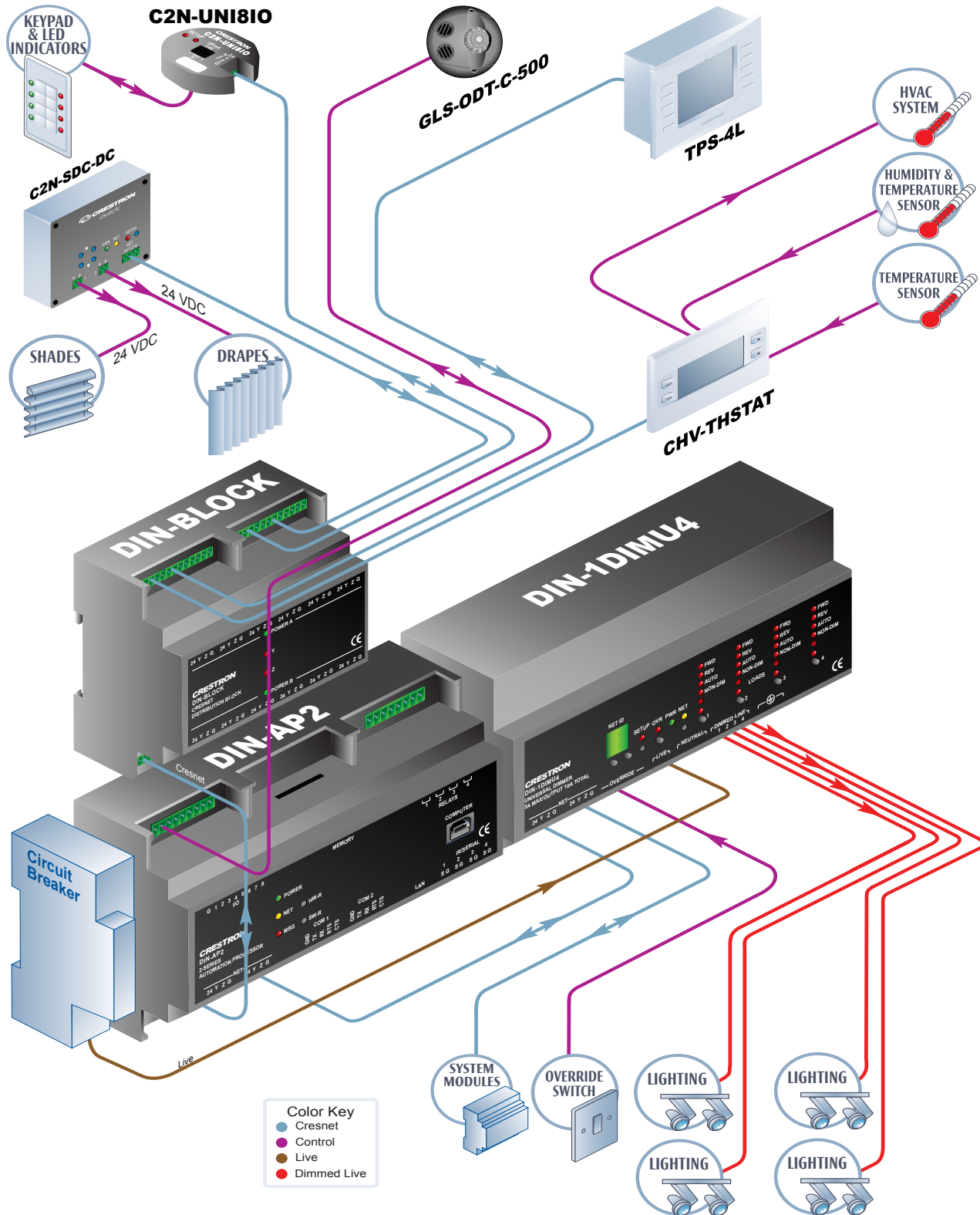
Weight

5.0 oz (148 g)

DIN-BLOCK

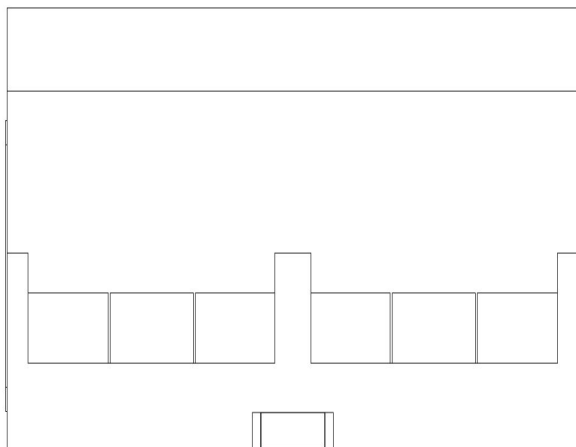
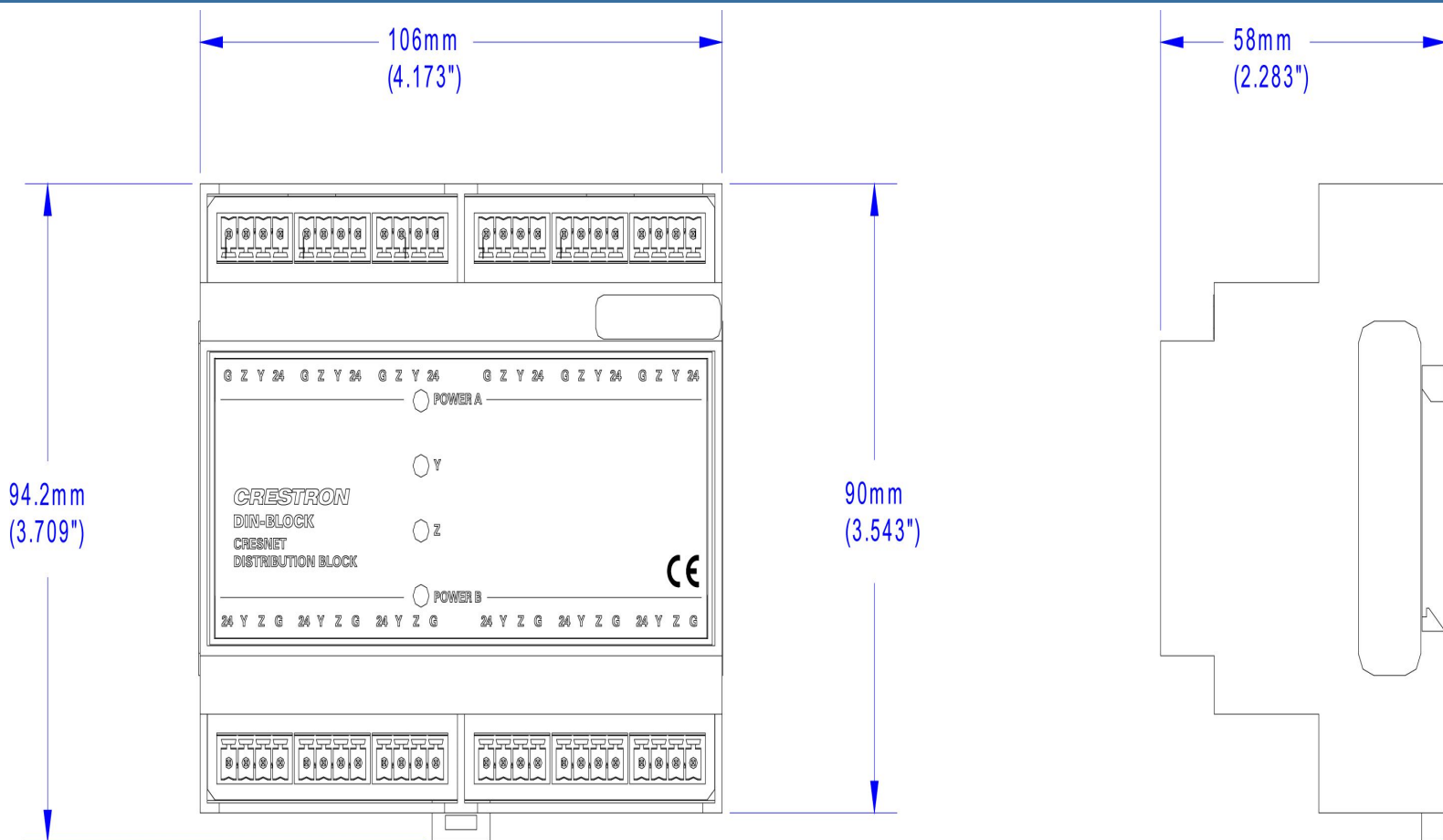
DIN Rail Cresnet Distribution Block

C2N-UNI8IO with DIN-Rail



DIN-BLOCK

DIN Rail Cresnet Distribution Block



DIN-BLOCK

DIN Rail Cresnet Distribution Block

