



ITEM #:AS380CKT
Aspen White Marble Kitchen
Table Top
48" x28" x2.5"

ITEM #:AS380CKB
Aspen Counter Kitchen
Table Base
46.75" x19.25" x33.5"

Your furniture purchase is an investment. Here are a few tips to maximize the lifetime of your furniture with a minimal amount of effort. Properly caring for your furniture can help ensure that it looks great year after year.

Wood Furniture Maintenance:

- Always dust, wipe, and clean with the grain of the wood.
- Dust with a soft cloth. Dust will scratch the furniture surface if not removed properly.
- If a polished surface becomes foggy, rub it with a cloth dipped in a solution of one tablespoon vinegar to one quart of water. Rub softly with the grain until the surface is completely dry.
- Soap and water are not advisable for wood surfaces. Water can penetrate the finish and raise the grain on wood, causing damage.
- Remember to change dusting cloths frequently as dirty cloths may scratch your furniture's surface.

The Enemies of Wood:

- Moisture is wood's worst enemy. Liquid spills should be gently wiped up immediately. Coasters should be used under all beverages.
- Do not allow rubber or vinyl materials to lie on the furniture. Chemicals in rubber may leave a stain. Put a strip of felt or leather under accessories that have rubber or vinyl.
- Heat creates a chemical change in the furniture's finish, which result in a white spot. Use protective pads under hot dishes, appliances, etc.
- Sunlight's ultraviolet rays can damage the finish of furniture. Do not place furniture directly against a heater or radiator and do not place in the path of hot streams of air from central heating. This will cause extreme localized drying of the wood.

Marble Top Maintenance:

The surface of the marble on your table has been polished and sealed to create a generally non-porous surface. The stone has many natural characteristics including veining, hairline cracks, and color variations, which make up the stone's beauty.

To maintain the beauty of your marble:

- Protect surfaces from scratching, staining and etching by:
 - Keeping them free of debris or sharp objects.
 - Wiping up spills immediately
 - Avoiding contact with chemicals (particularly acid-based materials)
- Clean with PH neutral products or those especially formulated for use on stone.
- It is not recommended to use a water-based solvent for dark marble as it will remove the polish from the surface.

Caring for the Fabric on Upholstered Furniture:

- Frequent vacuuming of the entire upholstered area will prevent dust from settling into the fibers.
- Professional cleaning is always recommended for all upholstered pieces.
- Do not use cleaning products containing brightening agents.

VERY IMPORTANT!!

NEVER
USE GLASS CLEANERS
ON FINISHED SURFACES.
AMMONIA WILL
CHEMICALLY ATTACK
THE FINISH.

DO NOT
WRITE
DIRECTLY
ON
SURFACE

PREVENT
MARKING

DO NOT
PLACE
DIRECTLY
IN
SUNLIGHT

PREVENT
FADING

DO NOT
USE
PLACEMATS
WITH
RUBBER
BASES

PREVENT
DISCOLORING

NEVER
ALLOW LIQUIDS OF ANY
KIND TO LINGER ON
SURFACES. ABSORPTION
CAUSES THE WOOD TO
WARP AND THE FINISH
TO DE-LAMINATE.

DO NOT USE
COMMERCIAL
POLISHES
AND WAXES

PREVENT
YELLOWING

DO NOT
PLACE HOT
POTS, ETC
ON
SURFACE

PREVENT
DAMAGE TO
FINISH!

REGULATE
THE
HUMIDITY
CONDITIONS
AT YOUR
HOME

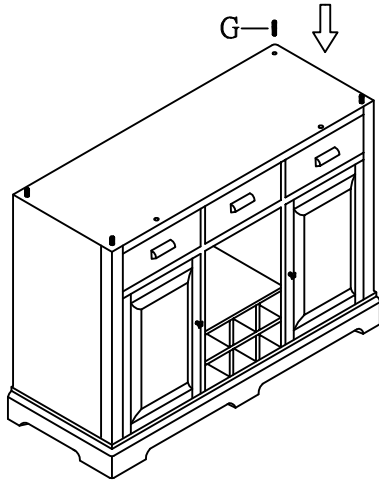
PREVENT
SPLITTING

AS380CKT/AS380CKB

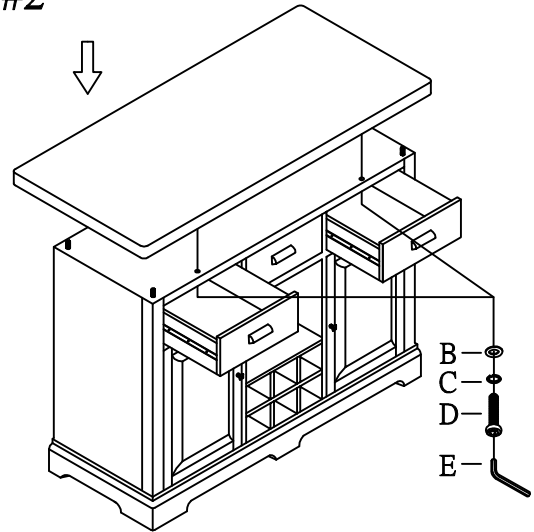
Assembly Instructions

Do not fully tighten bolts & screws until the entire item is completely assembled.

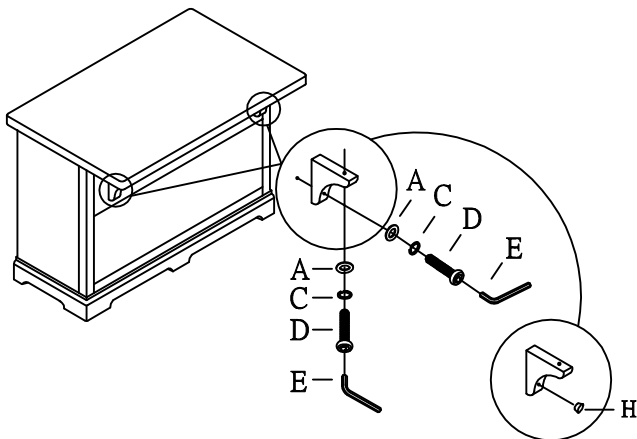
STEP#1



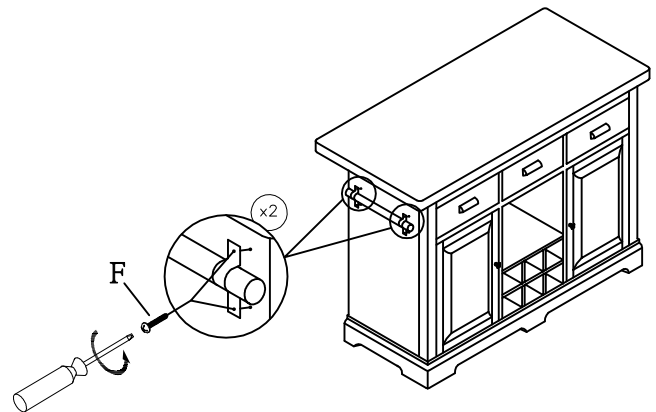
STEP#2



STEP#3

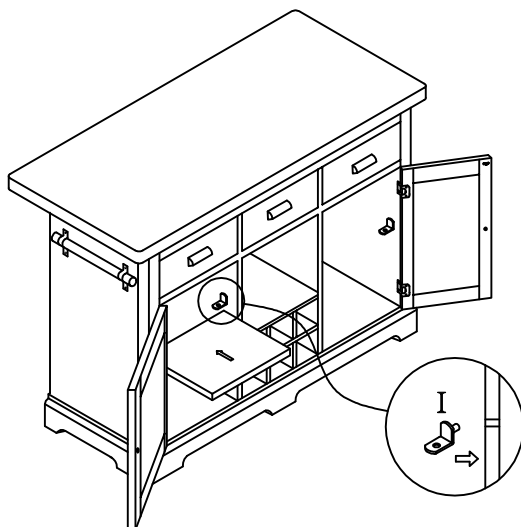


STEP#4

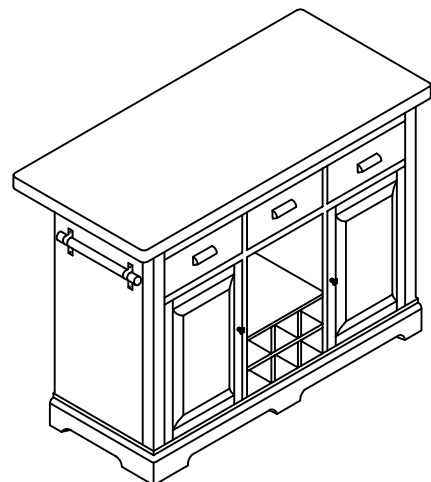


Note: Screwdriver is not provided.

STEP#5



STEP#6



Hardware Pack:#PAS380CKBH

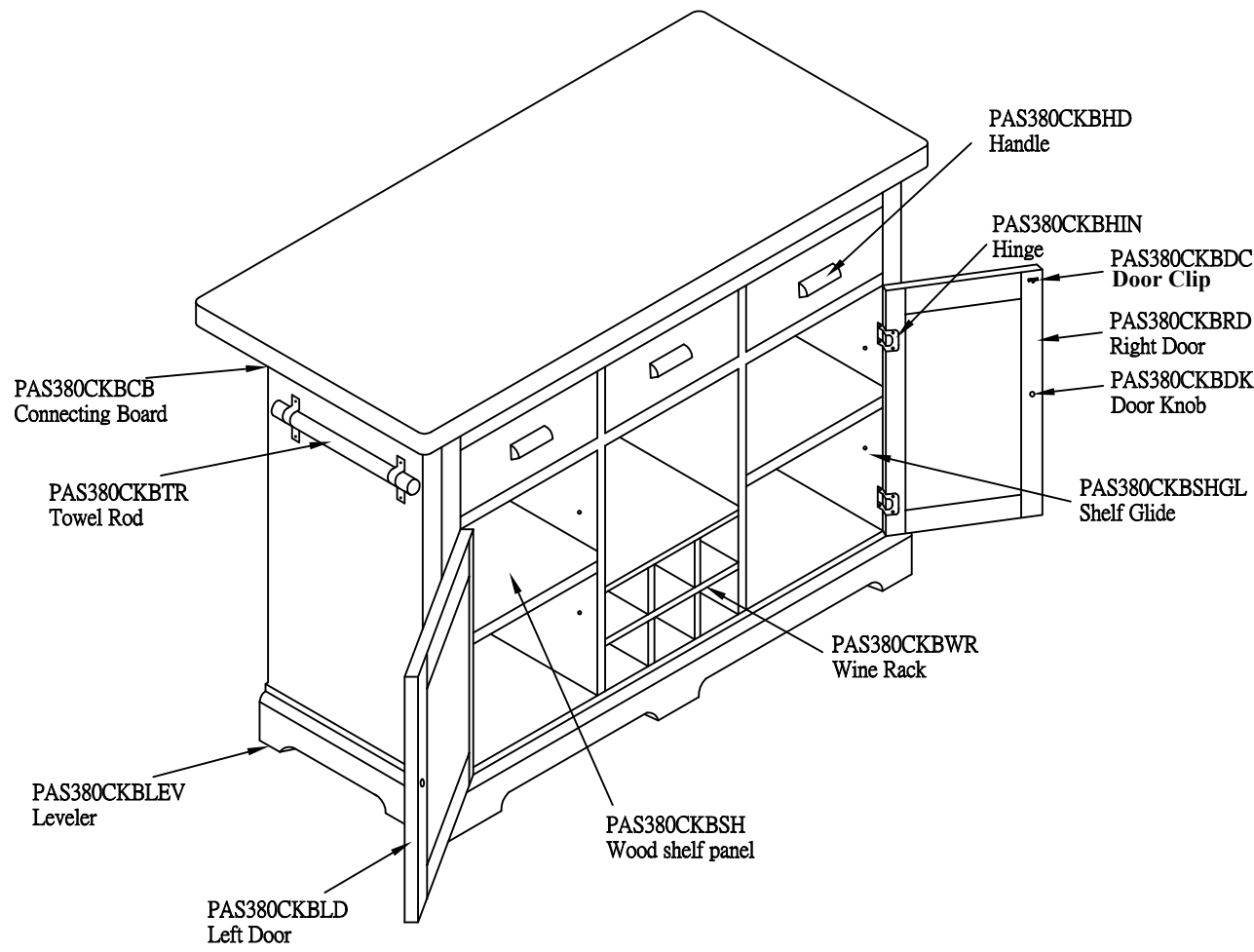
A		1/4"X12mm	4PCS
B		1/4"X19mm	2PCS
C		1/4"	6PCS
D		1/4"X1-1/4"	6PCS
E		4mm	1PC
F		Ø8 X 16mm	8PCS
G		D10 X 40mm	4PCS
H		Ø13mm	2PCS
I			8PCS

WARNING

- MARBLE/GRANITE IS NON-STAIN RESISTANT AGAINST FOODS AND ACIDIC OR OILY LIQUID
- IF ACIDIC OR OILY LIQUID SPILLS OVER THE MARBLE/GRANITE TABLE TOP, PLEASE IMMEDIATELY USE A DAMP SPONGES AND DETERGENT OR TOOTHPASTE TO WIPE MARBLE/GRANITE TABLE TOP UNTIL IT IS CLEAN
- COMMON OILY SUBSTANCES: COOKING OIL, OLIVE OIL
COMMON ACIDIC SUBSTANCES: KETCHUP, VINEGAR, GRAPE JUICE, LEMON JUICE
- MARBLE/GRANITE IS A NATURAL STONE PRODUCT. ANY VARIATIONS IN PATTERN, TEXTURE, AND COLOR ARE INHERENT IN THE MATERIAL AND ENHANCE THE NATURAL BEAUTY OF THE STONE.
- PLEASE DO NOT PLACE COLD OR HOT ITEMS DIRECTLY ON THE STONE

PARTS FOR AS380CKT/AS380CKB

COMPLETE HARDWARE:#PAS380CKBH



PRODUCT DETAILS		
TOP	GUANG XI WHITE MARBLE WITH PW	
MARBLE TOP THICKNESS	30MM	
SIDE PANEL	KULING WOOD VENEER ON PB	
WINE RACK	POPLAR	
SHELF PANEL	KULING WOOD VENEER ON PB	
DOOR	POPLAR+PB+KULING WOOD VENEER	
CONNECTING BOARD	POPLAR	
HANDLE/KNOB/HINGE/TOWEL ROD	IRON	
Door Clip	IRON	
LEVELER	IRON+PLASTIC	
PRODUCT SIZE	AS380CKT:48"x28"x2.5"	AS380CKB:46.75"x19.25"x33.5"
CARTON SIZE	AS380CKT:51.5"x30.5"x5"	AS380CKB:49"x22"x37.5"
NET WEIGHT	AS380CKT:38KG/83.6LBS	AS380CKB:43KG/94.6LBS
GROSS WEIGHT	AS380CKT:63KG/138.6LBS	AS380CKB:75KG/165LBS
CU.FT.	AS380CKT:4.54'	AS380CKB:23.39'

MADE IN CHINA



ITEM#:AS380CS
Aspen PU Counter Stool
18" x 15" x24"

Your furniture purchase is an investment. Here are a few tips to maximize the lifetime of your furniture with a minimal amount of effort. Properly caring for your furniture can help ensure that it looks great year after year.

Wood Furniture Maintenance:

- Always dust, wipe, and clean with the grain of the wood.
- Dust with a soft cloth. Dust will scratch the furniture surface if not removed properly.
- If a polished surface becomes foggy, rub it with a cloth dipped in a solution of one tablespoon vinegar to one quart of water. Rub softly with the grain until the surface is completely dry.
- Soap and water are not advisable for wood surfaces. Water can penetrate the finish and raise the grain on wood, causing damage.
- Remember to change dusting cloths frequently as dirty cloths may scratch your furniture's surface.

The Enemies of Wood:

- Moisture is wood's worst enemy. Liquid spills should be gently wiped up immediately. Coasters should be used under all beverages.
- Do not allow rubber or vinyl materials to lie on the furniture. Chemicals in rubber may leave a stain. Put a strip of felt or leather under accessories that have rubber or vinyl.
- Heat creates a chemical change in the furniture's finish, which result in a white spot. Use protective pads under hot dishes, appliances, etc.
- Sunlight's ultraviolet rays can damage the finish of furniture. Do not place furniture directly against a heater or radiator and do not place in the path of hot streams of air from central heating. This will cause extreme localized drying of the wood.

Marble Top Maintenance:

The surface of the marble on your table has been polished and sealed to create a generally non-porous surface. The stone has many natural characteristics including veining, hairline cracks, and color variations, which make up the stone's beauty.

To maintain the beauty of your marble:

- Protect surfaces from scratching, staining and etching by:
 - Keeping them free of debris or sharp objects.
 - Wiping up spills immediately
 - Avoiding contact with chemicals (particularly acid-based materials)
- Clean with PH neutral products or those especially formulated for use on stone.
- It is not recommended to use a water-based solvent for dark marble as it will remove the polish from the surface.

Caring for the Fabric on Upholstered Furniture:

- Frequent vacuuming of the entire upholstered area will prevent dust from settling into the fibers.
- Professional cleaning is always recommended for all upholstered pieces.
- Do not use cleaning products containing brightening agents.

VERY IMPORTANT!!

NEVER
USE GLASS CLEANERS
ON FINISHED SURFACES.
AMMONIA WILL
CHEMICALLY ATTACK
THE FINISH.

DO NOT
WRITE
DIRECTLY
ON
SURFACE

**PREVENT
MARKING**

DO NOT
PLACE
DIRECTLY
IN
SUNLIGHT

**PREVENT
FADING**

DO NOT
USE
PLACEMATS
WITH
RUBBER
BASES

**PREVENT
DISCOLORING**

NEVER
ALLOW LIQUIDS OF ANY
KIND TO LINGER ON
SURFACES. ABSORPTION
CAUSES THE WOOD TO
WARP AND THE FINISH
TO DE-LAMINATE.

DO NOT USE
COMMERCIAL
POLISHES
AND WAXES

**PREVENT
YELLOWING**

DO NOT
PLACE HOT
POTS, ETC
ON
SURFACE

**PREVENT
DAMAGE TO
FINISH!**

REGULATE
THE
HUMIDITY
CONDITIONS
AT YOUR
HOME

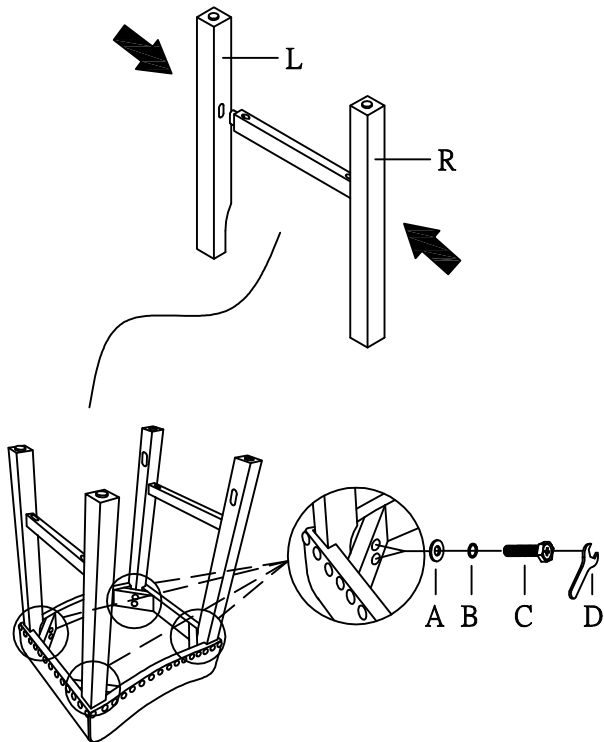
**PREVENT
SPLITTING**

AS380CS

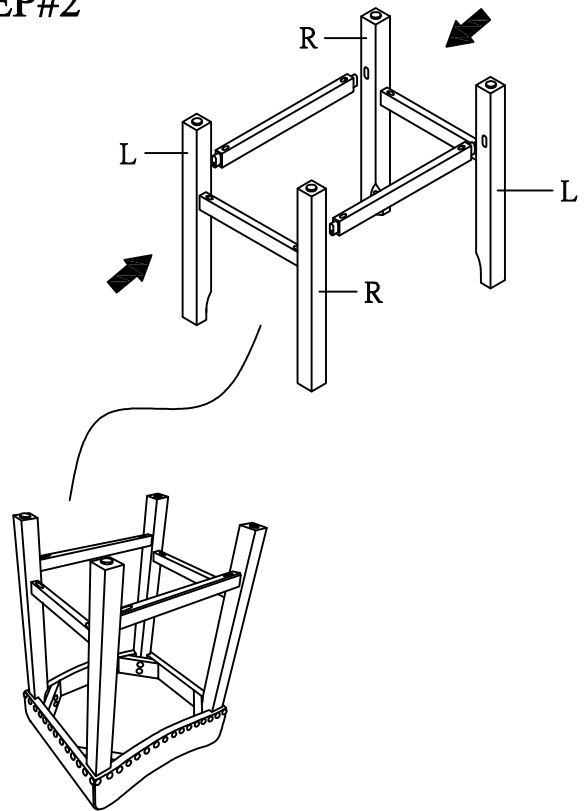
Assembly Instructions

Do not fully tighten bolts & screws until the entire item is completely assembled.

STEP#1

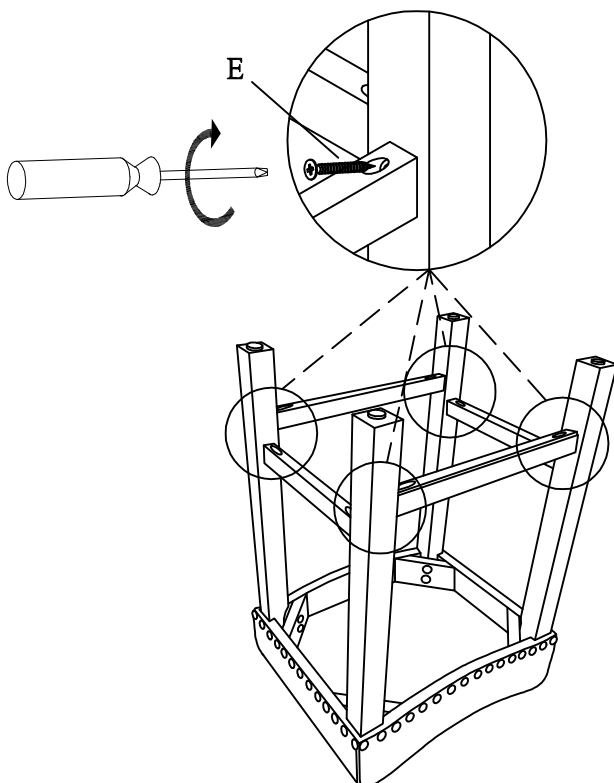


STEP#2

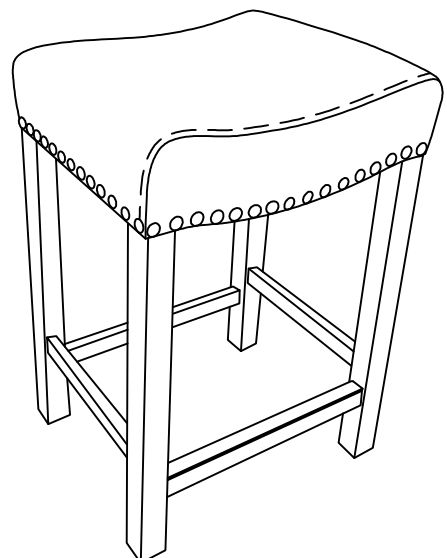


STEP#3

Note: Screwdriver is not provided.



STEP#4

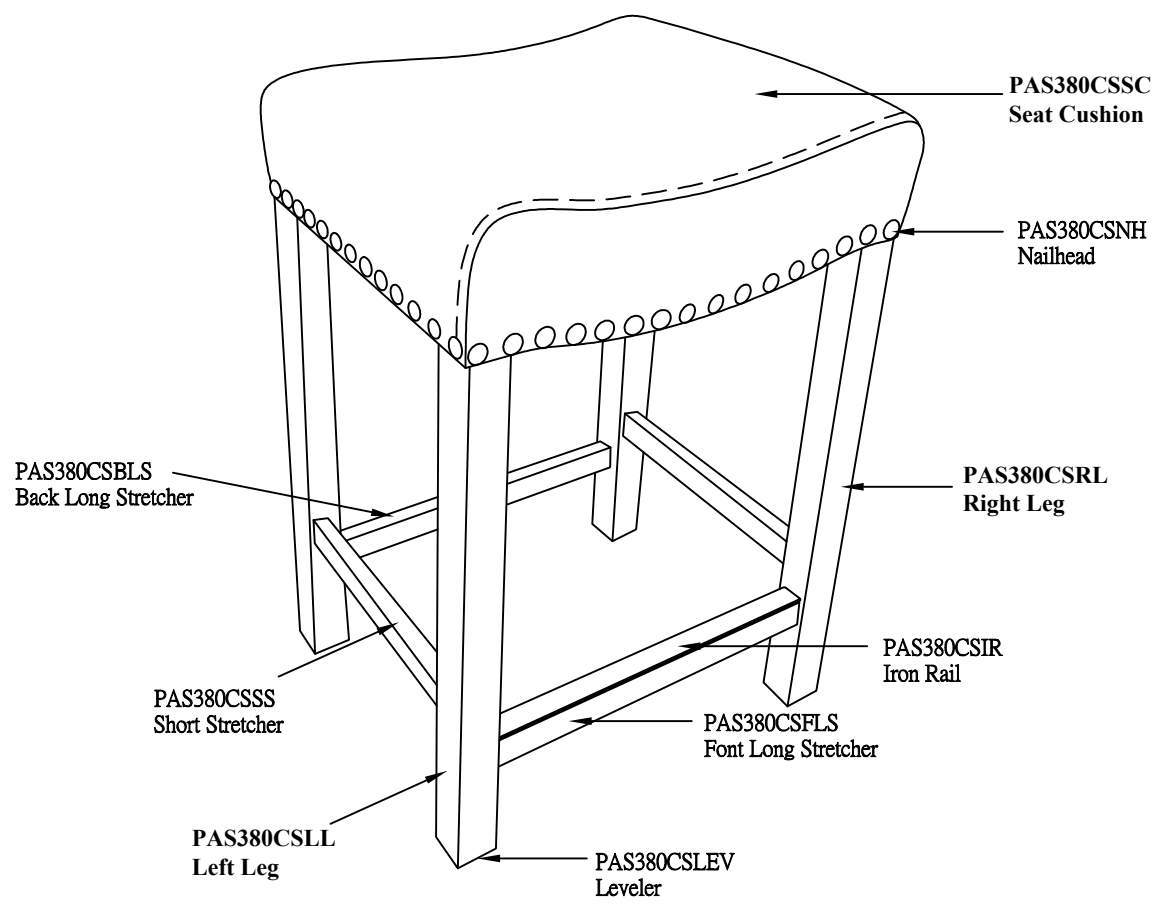


Hardware Pack:#PAS380CSH

A		5/16"X21mm	8PCS
B		5/16"	8PCS
C		5/16"X2"	8PCS
D		5/16"	1PC
E		Ø8x2"	8PCS

PARTS FOR AS380CS

COMPLETE HARDWARE:#PAS380CSH



PRODUCT DETAILS	
SEAT CUSHION	MDF+FOAM+PU+IRON
LEG	RUBBER WOOD
STRETCHER	RUBBER WOOD
IRON RAIL	IRON
LEVELER	IRON+PLASTIC
NAILHEAD	IRON
SEAT HEIGHT	24"
SEAT DEPTH	15"
PRODUCT SIZE	18"x15"x24"
CARTON SIZE	22.5"x16"x14.75"
NET WEIGHT	11KG/24.2LBS
GROSS WEIGHT	14KG/30.8LBS
CU.FT.	3.07'

MADE IN CHINA

Steve Silver Company Dining Chairs

Assembly Troubleshooting Guide

The most important element of correct chair assembly is to tighten the bolts as directed. Prematurely tightening the bolts can lead to numerous issues and will lengthen the assembly time. Listed below are the most common issues in chair assembly and their easy solutions.

PROBLEM: Chair is unlevel.

Cause 1:

Unlevel chairs can occur if the bolts are fully tightened before all bolts are attached. There is a variance in the alignment of this chair to allow the chair to be assembled more easily.

Solution:

Loosen each bolt in the seat box (front legs, back corner blocks and back apron) until they are finger tight. Place the chair upright on the floor. Sit in the chair for about 30 seconds. Carefully turn the chair upside down and tighten each bolt. The chair will now be level.

Cause 2:

Unlevel chairs can occur if one or more of the floor glides are missing from the bottom of the chair leg.

Solution:

Request a set of floor glides from the e-mail address below.

PROBLEM: Bolts do not fit properly.

Cause:

This issue can occur when the bolts are tightened fully before all bolts are attached. There is a variance in the alignment of the bolts to allow the chair to be assembled more easily. Tightening the bolts prematurely can cause the holes for the other bolts to become slightly misaligned, causing the remaining bolts not to fit properly.

Solution:

Make sure each bolt in the seat box (front legs, back corner blocks and back apron) is loosened until finger tight. This will allow you to realign the holes, and the bolts will now fit properly.

Questions?

Please reach us at 800-344-7278 or ar@ssilver.com, and we will be happy to help you.