



# DWC6432FIXXLU

## Professional dishwasher

Number of place settings (label): 8  
Panel colour: Silver

### Programs

- Normal programme
- Intensive

### Options

- Delayed start: Possible to delay up to 24 hours

### Cleaning systems

- Number of spray zones: 9
- No need to rinse the dishes thanks to Super Cleaning System™
- Automatic water-softener for better washing performance

### Features

- 2 led lights
- 8 Steel™ - Vital parts of the dishwasher made in stainless steel.
- Salt refill indicator: Salt refill indicator
- Indication of low level of rinse-aid: Notification in display
- Time remaining indicator: Time remaining indicator
- Voice signal for the end of washing cycle
- Steam protection device
- Hidden heater
- "All in one" tablet function

### Water safety

- Aqua Detect™ - Instant recognition of any leakage in the motor compartment.
- Aqua Safe™ system - Multiple safety systems preventing water damages.

### Installation

- From front adjustable rear foot
- Velcro strips for easy mounting and adjustment of the separate custom door
- Multifit outlet hose
- Integrated anti-siphon device
- Trim kit

- EAN code: 3838782958854
- Product code: 744963

### General

- Product group: Professional dishwasher
- Installation: Fully integrated
- Size: XXL, 860 mm high
- Type of display: TFT front display LCD top display
- Number of programs: 10
- Noise level: 42 dB(A)re 1 pW
- Number of baskets: 3
- Number of place settings (label): 8
- EAN code: 3838782958854

### Dimensions and installation

- Height: 859 mm
- Width: 608 mm
- Depth: 567 mm
- Packaging height: 930 mm
- Packaging width: 640 mm
- Packaging depth: 680 mm
- Length electrical cord: 1,8 m



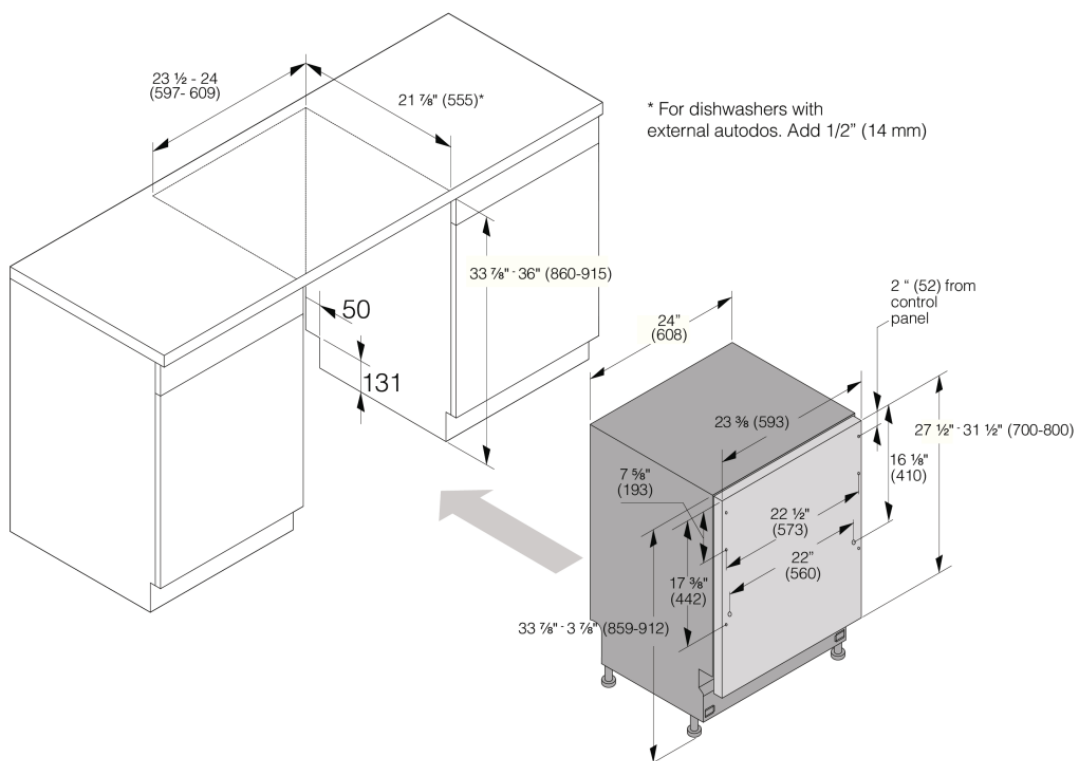
- Length inlet hose: 163 cm
- Length outlet hose: 230 cm
- Net weight: 45 kg
- Gross weight: 48,8 kg

#### Dimensioner

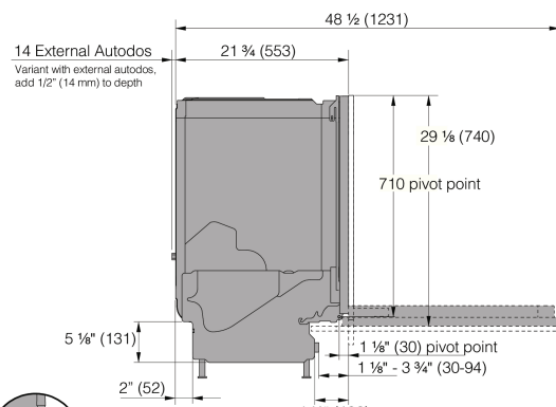
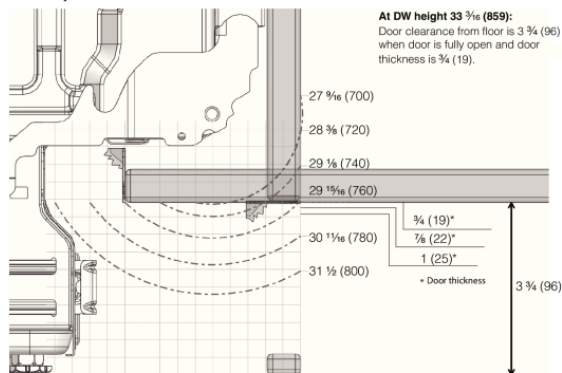
- Fuse: 30 amp
- Frequency: 60 Hz
- Required inlet water pressure: 1 MPa

#### Consumption

- Estimated annual energy consumption: 250 kWh
- Energy consumption - normal program: 1,1 kWh
- Estimated annual water consumption: 2688 l
- Energy consumption in standby mode: 0,5 W



#### Door trajectories



One grid is 0,39 x 0,39" (10 x 10 mm)

- When air nozzle is installed a minimum gap of 3/16" (5 mm) is required below door panel
- Status light add 5/32" (4mm) to lower edge of door panel



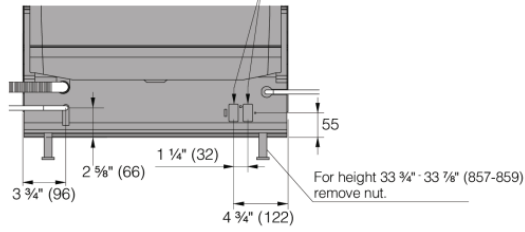
Floor projection:  
min 22 (50 mm)

4 1/8" (106)

Floor projection depends on specification.

Single Inlet Variant

External autosos  
electrical connection



113

TMD DW60.C FI XXL

