







ASSEMBLY INSTRUCTIONS

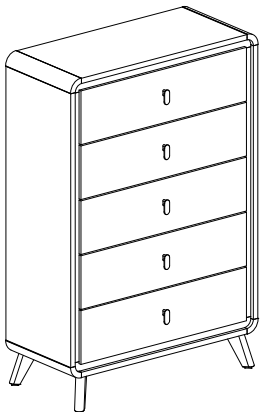
ITEM : B9240-4 CHEST

BOX OF CHEST PART LIST

| ITEM | DRAWING | DESCRIPTION | QTY |
|------|---|-------------|-----|
| A |  | CHEST | 1 |
| B |  | LEG | 4 |

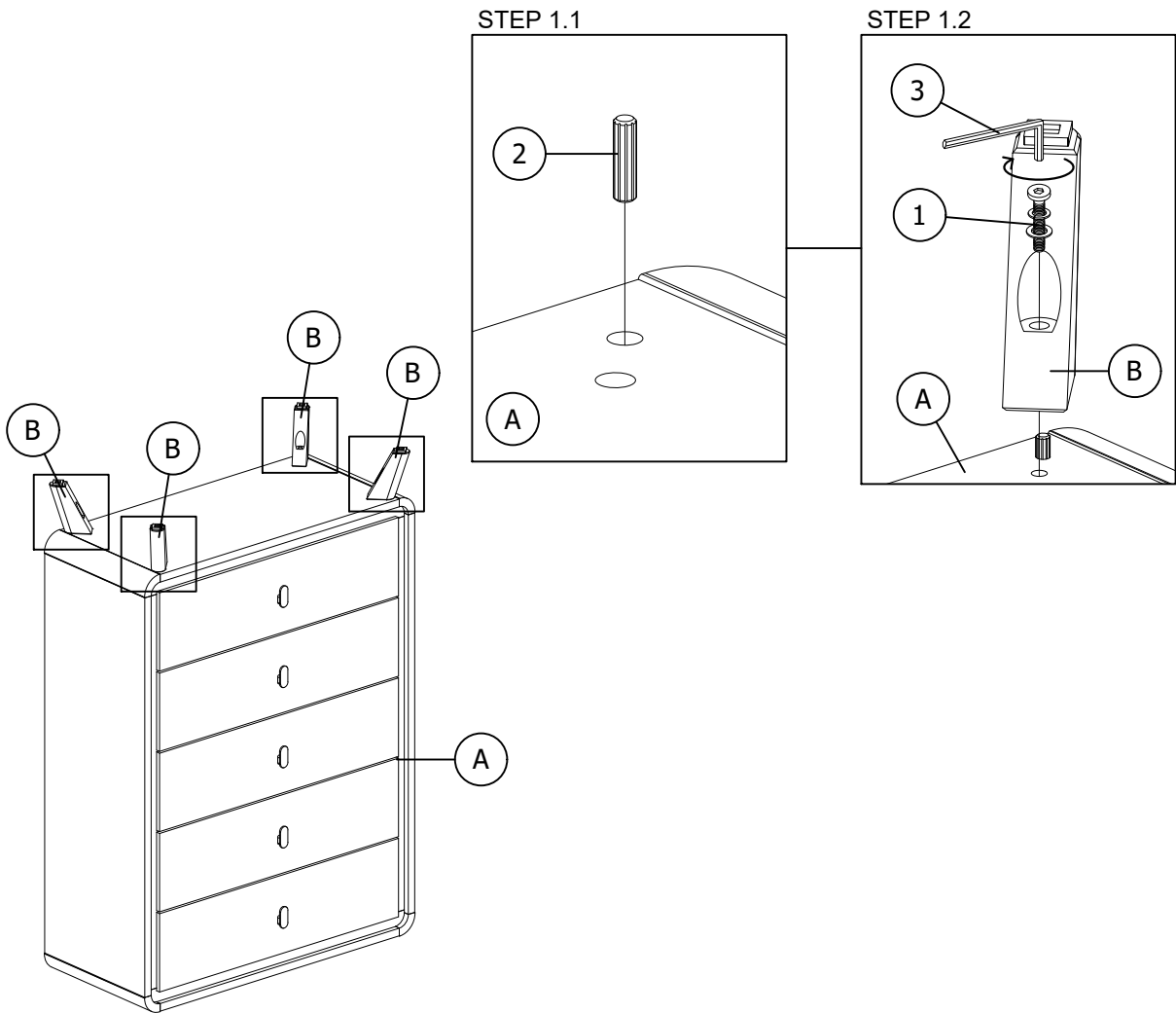
BOX OF CHEST HARDWARE LIST

| ITEM | DRAWING | DESCRIPTION | QTY |
|------|---|---|-----|
| 1 |  | JCBB Screw M8 x 60MM | 4 |
| 2 |  | WOOD DOWEL Ø8 x 30MM | 4 |
| 3 |  | ALLEN KEY M5 | 1 |
| 4 |  | TIPPING RESTRAINT 1 PC * Located in the chest 1st drawer | 1 |



COMPLETED ASSEMBLY

STEP 1



THE HARDWARE IS LOCATED IN THE PACKING ITEMS
THE ANTI TIPPING HARDWARE IS LOCATED IN THE CHEST 1ST DRAWER

NOTE : MUST TIGHT SCREWS PERIODICALLY. WITH USE SCREWS MAY BECOME LOOSE.
CHECK TIGHTNESS OF ALL SCREWS EVERY 6-8 WEEKS.

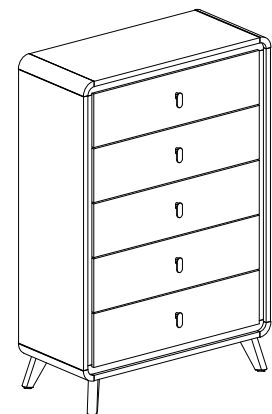
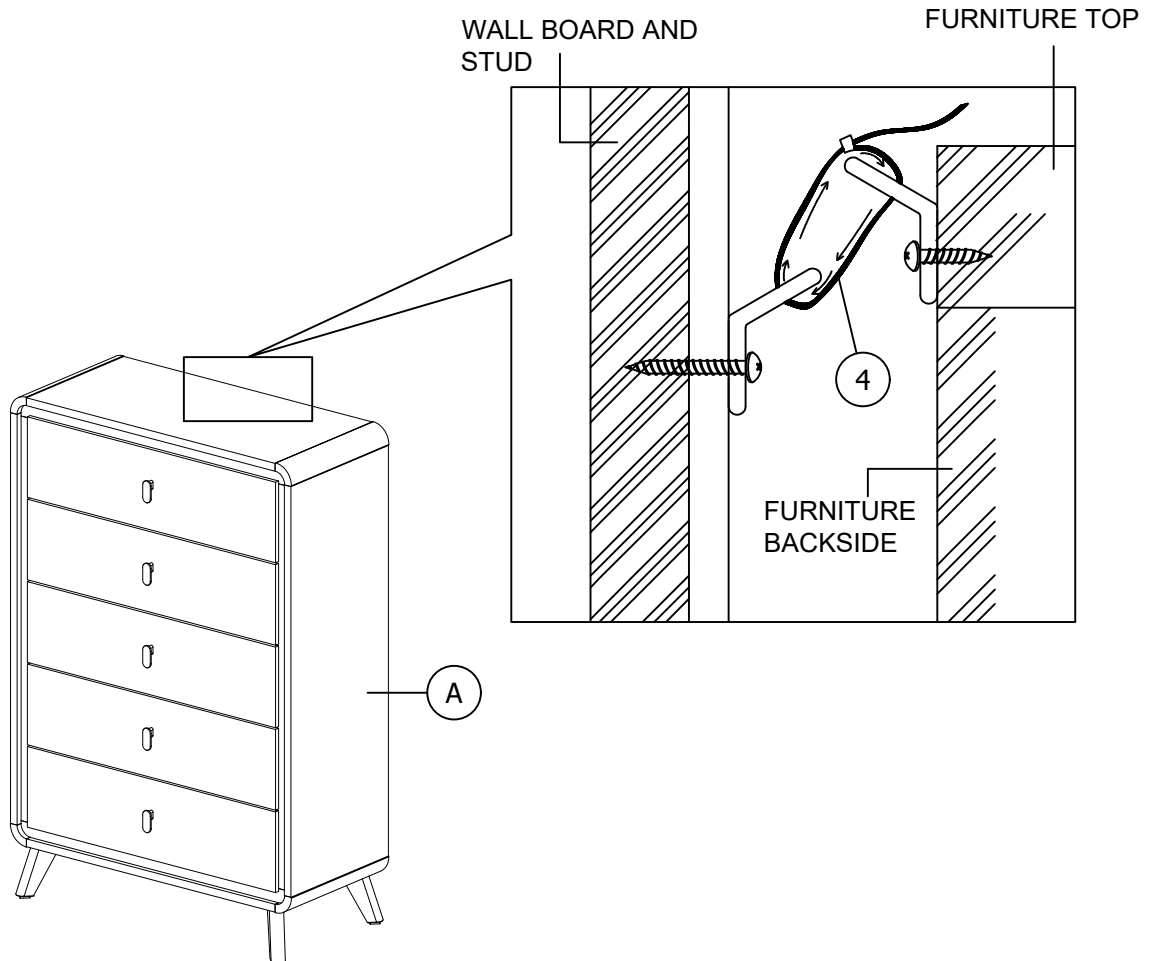
PAGE 01 OF 02

MADE IN MALAYSIA

ASSEMBLY INSTRUCTIONS

ITEM : B9240-4 CHEST

STEP 2



THE HARDWARE IS LOCATED IN THE PACKING ITEMS
THE ANTI TIPPING HARDWARE IS LOCATED IN THE CHEST 1ST DRAWER

PAGE 02 OF 02

NOTE : MUST TIGHT SCREWS PERIODICALLY. WITH USE SCREWS MAY BECOME LOOSE.
CHECK TIGHTNESS OF ALL SCREWS EVERY 6-8 WEEKS.

MADE IN MALAYSIA