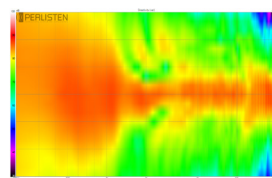
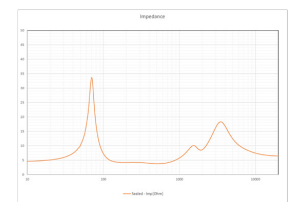


Horizontal Directivity



Vertical Directivity



Impedance

MODEL R4s

(R)4s

TECHNICAL SPECIFICATIONS



Designed to be mounted with integral keyhole, optional tilt/swivel bracket, or mounted behind screens. Sharing "trickle-down" technology from our flagship S-Series, the DPC-Array here based on three 26mm domes, guarantees excellent directivity control and timbre matching with all R-Series speakers. The Silk diaphragms developed ground up, chosen specifically their smooth, effortless representation of midrange and treble. The 165mm woofer is made from our proprietary HPF pulp, two years in development, bringing new technology to one of the oldest materials used in loudspeaker design. Optimized for smooth power response (2pi or 4pi) the R4s is designed to work well as part of a larger R-series system, versatile enough to be used as any channel.

BASIC

Dimensions (HxWxD)

378 x 230 x 173mm
14.9 x 9.0 x 6.8"

Weight

9.5 kg (20.9 lbs.)

Available finishes

High Gloss Black, White

TECHNICAL

Enclosure Alignment

3-way acoustic suspension

Driver complement

DCP-Array: 26mm(3) Silk dome
Woofers: 165mm HPF diaphragm

Sensitivity

86.5dB / 2.83v / 1.0m

Impedance

4Ω nominal / 3.7Ω min

Response Linearity

300 - 20kHz +/-1.5dB window

Frequency Response (-10dB)

48 - 32kHz

Typical In Room bass extension

42Hz

Recommended Amplifier Power

50 - 200W RMS

SPL capability @1m (100-20kHz)

109.5dB peak
109.0dB peak <3% - 2nd, 3rd Harmonics

Certification

THX Ultra



DPC Array
Directivity pattern control
*USA Patent pending



HPF (Hybrid Pulp Formulation)
Diaphragms made from mixed
long fiber hardwood, bamboo
and wool

[illegible]