

caracole



RESERVED SEATING COUNTER STOOL

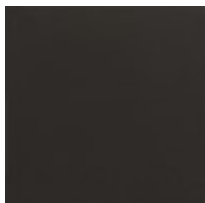
cla-424-311

COLLECTION: CARACOLE CLASSIC

DIMENSIONS: 19.75W x 22D x 39.75H

This contemporary counter stool takes on dramatic style when you view the wide, Whisper of Gold panel that shines off its back. Neutral fabric fully surrounds the square upper back and seat cushion that rest on an exposed wood frame, sabre legs and gracefully curving arms finished in Seal Skin. This is a low, klismos chair with truly polished appeal.

FINISH:



Seal Skin



Whisper of Gold

FABRIC:



2794-81CC