

GETTING *started* WITH YOUR TOP FREEZER REFRIGERATOR



BEFORE YOU START



SET UP YOUR REFRIGERATOR

Remove the tape and glue residue from surfaces before turning on the refrigerator. Choose a place near a grounded electrical outlet, allowing for clearances for ease of installation, proper circulation, and plumbing and electrical connections.



BEFORE OPERATING FOR THE FIRST TIME

After you remove all of the package materials, clean the inside of your refrigerator before using it. See the **CARE AND CLEANING** section in your Use & Care Manual.

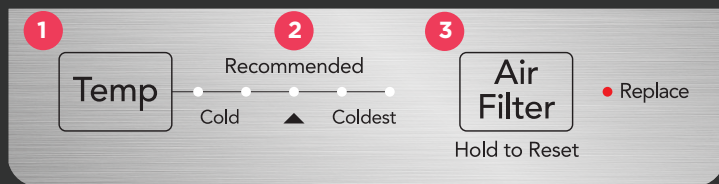
YOU'RE IN CONTROL



Your Controls

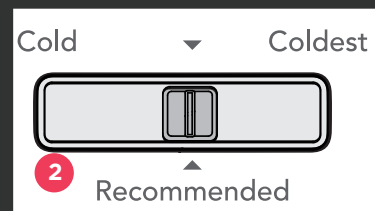
It's easy! When first turning your appliance on, adjust the controls to the factory set **Recommended**. After 24 hours, adjust the controls in small increments, allowing the temperatures to stabilize. The refrigerator control changes temperatures in both the refrigerator and the freezer. The freezer control moves the damper in the freezer. Adjust the freezer control toward **Cold** to open the damper, making the freezer temperature warmer. Adjust it toward **Coldest** to close the damper, making the freezer colder.

Refrigerator Control



- 1 Press the **Temp** button on the refrigerator control to scroll through the 5 temperature settings. For colder temps adjust toward **Coldest**, and for warmer temps adjust toward **Cold**.
- 2 Both the refrigerator and freezer controls can be left at the factory preset (**Recommended**) or adjusted as desired.
- 3 The air filter status light will prompt you to replace the filter after 6 months. After replacing the air filter, press and hold **Air Filter** for 3 seconds to reset.

Freezer Control



REMEMBER

- For the best circulation, do not block the cold air vents with food.
- Your movable door bins can be personalized to fit your family favorites and most used items.
- Your full-width deli drawer offers you another storage option that is conveniently located so you have easy access to foods such as deli meat and cheeses.

QUICK CARE



A little love goes a long way

Keeping your refrigerator clean maintains its appearance and freshness.

Be gentle

Clean with warm water and mild soap. For stainless steel models only, use **Frigidaire ReadyClean™** Stainless Steel Cleaner.



5304508691

KEEP IT FRESH



Frigidaire PureAir™ AF-1 Air Filter (included)

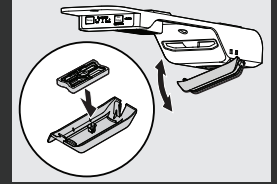
To replace your air filter:

1. Unpack the new filter and snap it into the filter housing. The open face (black carbon media) of the filter should be installed facing outward in the cover.
2. Place the air filter housing in the refrigerator by snapping it into the back section of the control housing as shown.

Frigidaire PureFresh Fruit & Veggie Saver™ (not included)

Extend the life of fruit and vegetables while reducing food waste and saving money. Place it right in your crisper.

Order your **PureAir™ AF-1 Air Filter** refill and **PureFresh Fruit & Veggie Saver™** at Frigidaire.com or any Frigidaire authorized retailer.



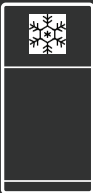
FRGPAAF1



FRUFVS™

Change your filters every 6 months to ensure optimal fridge freshness.

FEEL THE CHILL



Ice Maker Ready

Enjoy the largest ice bucket capacity available without sacrificing valuable freezer space thanks to our optional slim ice maker. For information about Ice Maker Kit 117000, go to Frigidaire.com or any Frigidaire authorized retailer.

Check out the **ICE MAKER** section in your Use & Care Manual to learn how to operate it.

Note: You can make more ice by setting the freezer control to a colder setting.

FAQs

Is it normal for my refrigerator to make noises?

Your new high-efficiency refrigerator may make unfamiliar sounds. See the **NORMAL OPERATING SOUNDS** section of your Use & Care Manual.

Why does my refrigerator run most of the time? Is this normal?

Today's refrigerators are designed to be more energy efficient than previous models. This means that they run longer cycles, or run continuously, to maintain an even temperature inside. Please note: starting a unit takes about 10 times as much energy as it does to keep it running.



Find more troubleshooting tips in the back of your Use & Care Manual.

LET'S MAKE IT OFFICIAL!

Take the first step to becoming a part of the Frigidaire family and discover more benefits by registering your top freezer refrigerator.

Look for the Photoregister™ icon on your registration card.



WE ARE
here
FOR YOU



Have a question?



Want help?



Need service?

owner support

frigidaire.com 1 (800) 374-4432

frigidaire.ca 1 (800) 265-8352

