

## Fully Integrated 36" Bottom Mount

KF 1913 Vi / KF 1903 Vi



# Fully Integrated 36" Bottom Mount KF 1913 Vi / KF 1903 Vi



## Features:

- MasterCool controls
- ClearView lighting system
- Drop and Lock Shelves
- SmartFresh storage drawers
- FullView storage drawers
- Ice maker
- RemoteVision capable
- Acoustic door and temperature alarm
- Optical door and temperature alarm
- Energy Star

## SPECIFICATIONS

**F 1903 Vi** — Item 37190301USA - Right Hinged

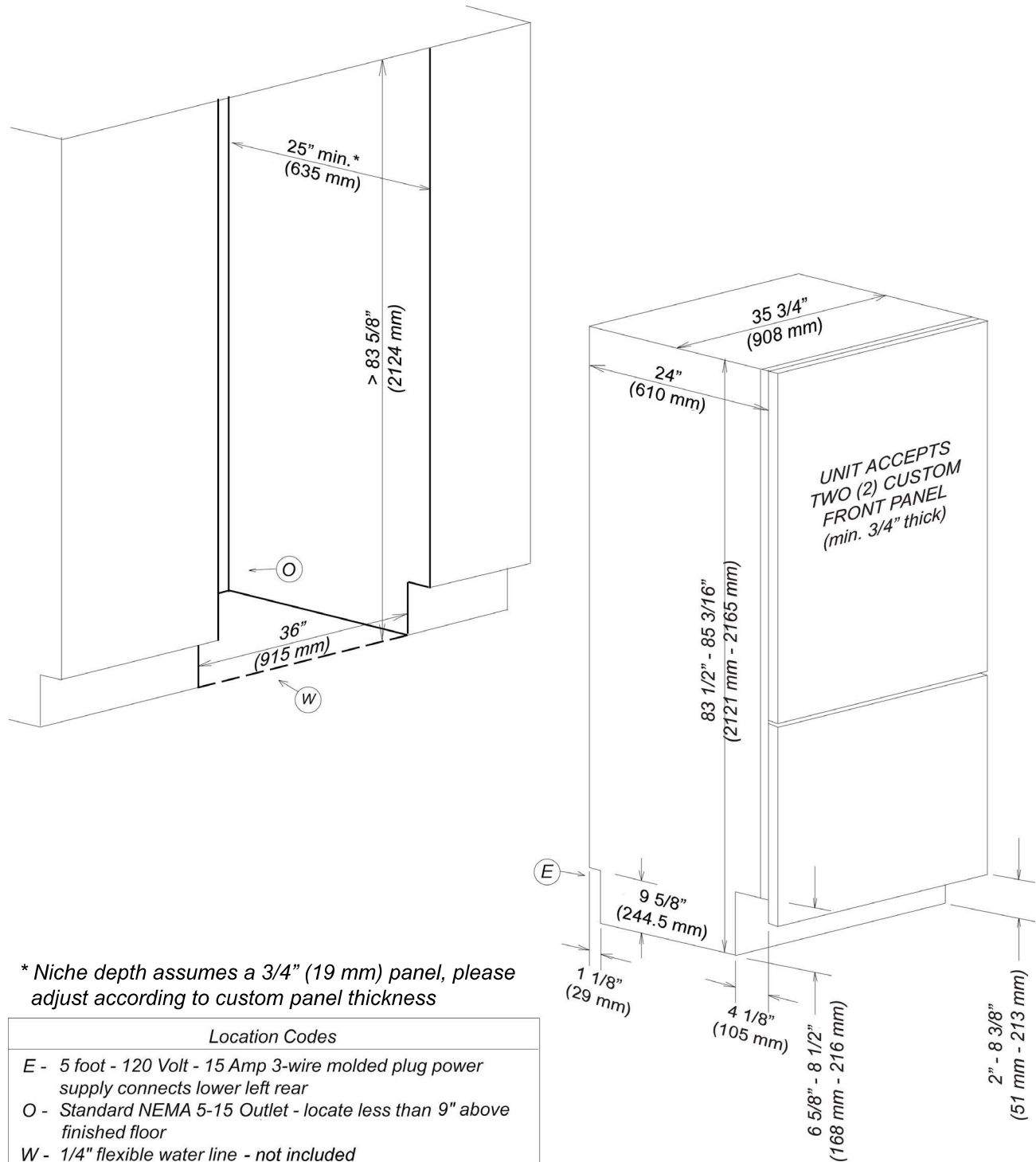
**F 1913 Vi** — Item 37191301USA - Left Hinged

Overall Unit Width	35 <sup>3</sup> / <sub>4</sub> " (908 mm)
Overall Unit Height	83 <sup>1</sup> / <sub>2</sub> " - 85 <sup>3</sup> / <sub>16</sub> " (2121 mm - 2165 mm)
Overall Unit Depth	24" (610 mm)
<b>Niche</b>	
Minimum Cabinet Opening Width	36" (915 mm)
Minimum Cabinet Opening Height	83 <sup>5</sup> / <sub>8</sub> " (2124 mm)
Minimum Cabinet Opening Depth	25" (635 mm)*
<b>Plumbing</b>	
Water Supply Requirements	Connect to a cold water supply only. Must be connected to a shut-off valve. The water shut-off valve must be accessible after installation. The water pressure must be between 25 psi (1.7 bar) and may not exceed 80 psi (5.5 bar). If the pressure is higher than 80 psi (5.5 bar), a pressure reducing valve must be installed.
Water Connection Line	Standard 1/4" O.D flexible water line. The maximum outer diameter of the water pipe (without fittings): 3/8" (10 mm). Water line is not included.
<b>Electrical</b>	
Electrical Requirements - Volts/Amps	110V / 120V, 60Hz, 15 Amps In the case of side-by-side installations, a separate outlet must be used for each appliance.
Power Cord - Plug and length	Yes - NEMA 5-15 plug, 5 ft (1.52 m)
<b>Custom Panel</b>	<b>Please refer to the manual for further details.</b>
Maximum Panel Weight	Upper door - 84 lbs (38 kg) Lower door - 31 lbs (14 kg)
Maximum Panel Thickness	1 <sup>1</sup> / <sub>2</sub> " (38 mm)
Minimum Panel Thickness	3/4" (19 mm)
<b>Shipping</b>	
Shipping Weight	511.6 lbs (232 kg)
Shipping Dimensions	39 <sup>1</sup> / <sub>2</sub> " W x 89 <sup>13</sup> / <sub>16</sub> " H x 29 <sup>1</sup> / <sub>4</sub> " D
<b>Support</b>	
Call Miele	800.843.7231
Miele Website	🌐 <a href="http://www.mieleusa.com">www.mieleusa.com</a>
20/20 Link	🌐 <a href="http://2020technologies.com">2020technologies.com</a>

Fully Integrated 36" Bottom Mount  
KF 1913 Vi / KF 1903 Vi



FOR FLUSH INSTALLATION



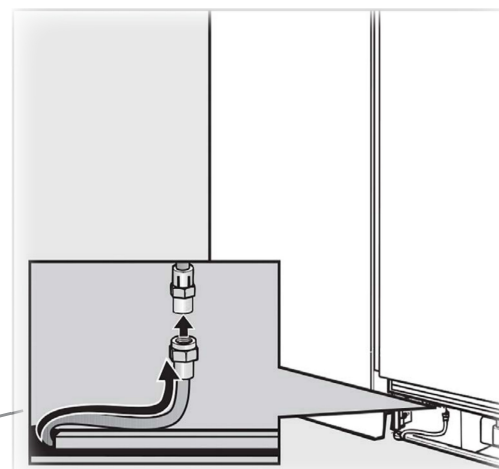
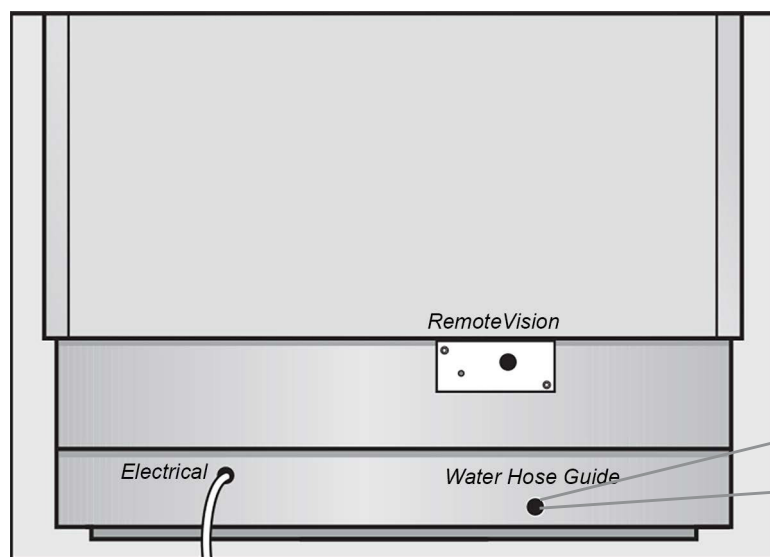
\* Niche depth assumes a 3/4" (19 mm) panel, please adjust according to custom panel thickness

Location Codes
E - 5 foot - 120 Volt - 15 Amp 3-wire molded plug power supply connects lower left rear
O - Standard NEMA 5-15 Outlet - locate less than 9" above finished floor
W - 1/4" flexible water line - not included
Notes
• All Installations must be done in accordance with local codes
• Sides of adjoining cabinets should be filled (flush to frame) to insure proper fit and finish
• For Proud Installation - please adjust accordingly

# Fully Integrated 36" Bottom Mount KF 1913 Vi / KF 1903 Vi



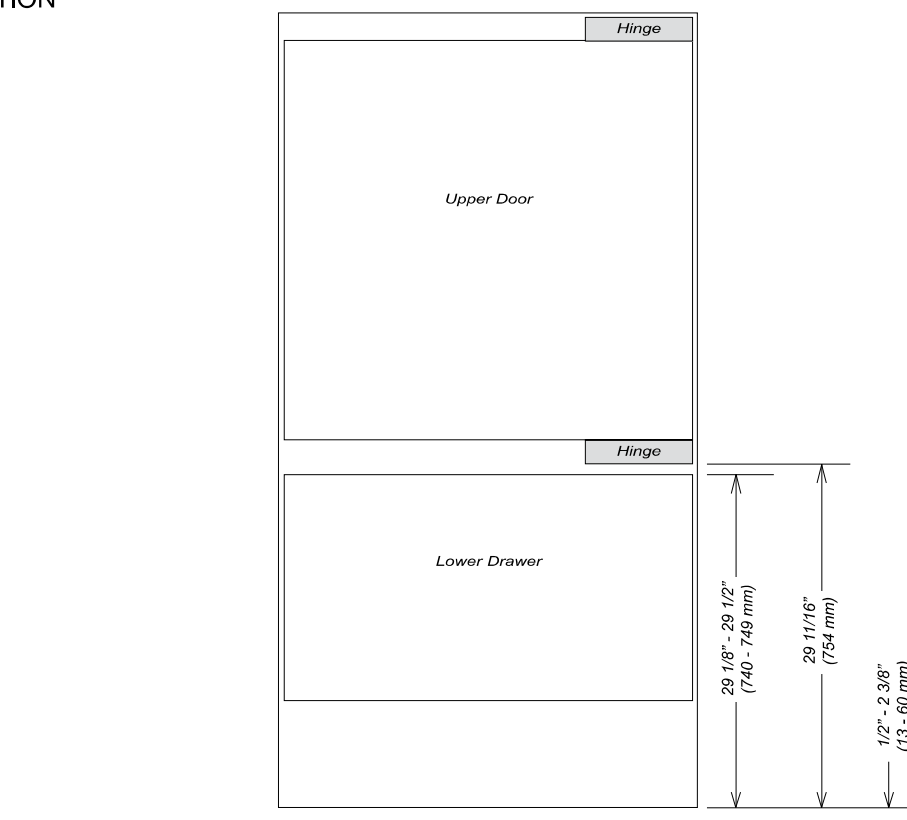
## POWER SUPPLY AND WATER CONNECTION BACK VIEW



Water connection is located in front of unit.  
1/4" compression fitting is needed.

Electrical - 5 foot (1.52 m) - 120 Volt - 15 Amp - NEMA 5-15 molded plug  
Water line - 1/4" flexible water line - not included

## LOWER HINGE LOCATION



KF 1913 Vi / KF 1903 Vi

Page 4 of 8

Specification Sheets TRS 07012015

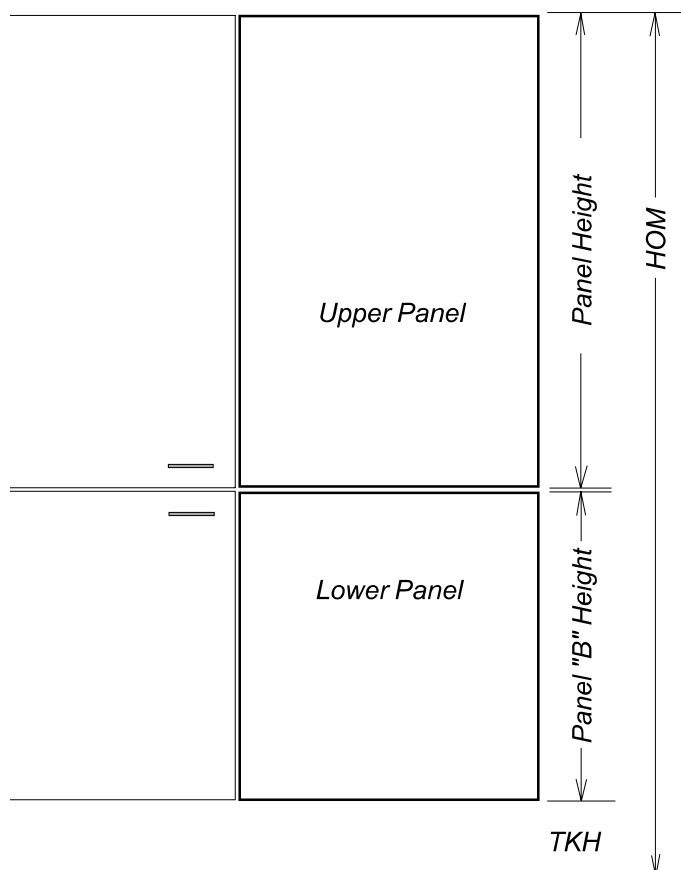
# Fully Integrated 36" Bottom Mount KF 1913 Vi / KF 1903 Vi



## CUSTOM PANEL INSTALLATIONS

**These units do not come equipped with a front panel.** They are designed to accept a custom door panel supplied by the cabinet maker. Miele has a unique panel integration system which allows the panels to align with the surrounding cabinets.

Panel size is determined in the following manner:



**Width:** 35 3/4" (908 mm) in all cases  
**Thickness:** Minimum 3/4" (19 mm) outside frame

**Standard Upper Panel Height:** 53 5/16" (1354 mm)

**Notes:** Finish back side of panels to insure appearance  
Panel may extend above unit. This is **not** considered in height calculation

**Upper Maximum panel weight:** 84 Pounds

**Lower Panel Height:** Use the following calculation:

**Panel Height** = HOM - 53 5/16" (1354 mm) - TKH

**HOM** = Total height of machine. Can be adjusted to match adjoining cabinets - typically 84" (2133 mm).

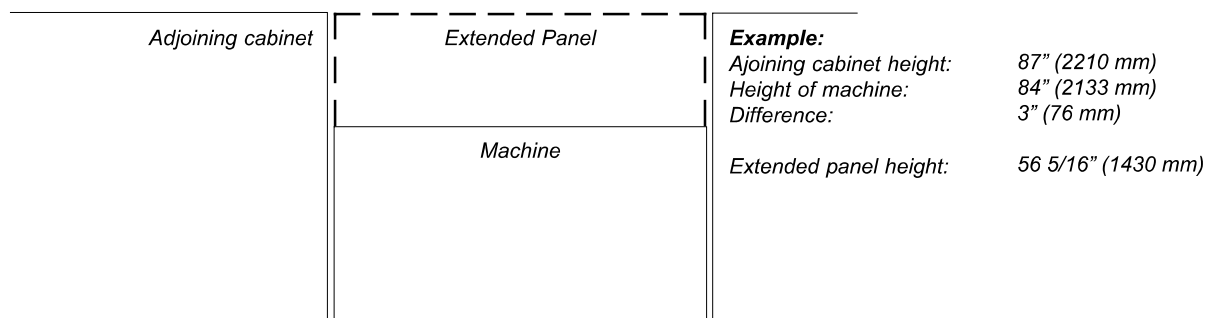
HOM is adjustable between 83 1/2" - 85 3/8" (2121 mm - 2165 mm)

**TKH** = Toe-kick height 2" - 8 3/8" (51 - 212 mm)

**Lower Maximum panel weight:** 31 Pounds

## Upper Panel Notes

If the adjoining cabinets are taller than the height of machine (HOM) - the upper panel may be extended accordingly. Find the difference between height of the adjoining cabinets and the height of machine (HOM) and add to 53 5/16"



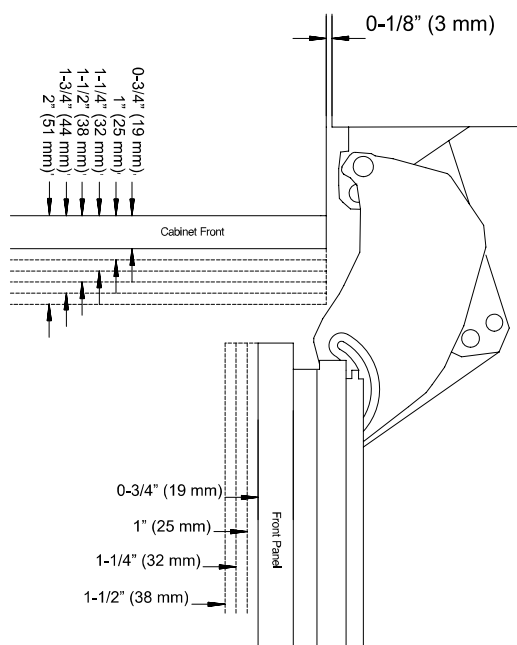
# Fully Integrated 36" Bottom Mount KF 1913 Vi / KF 1903 Vi



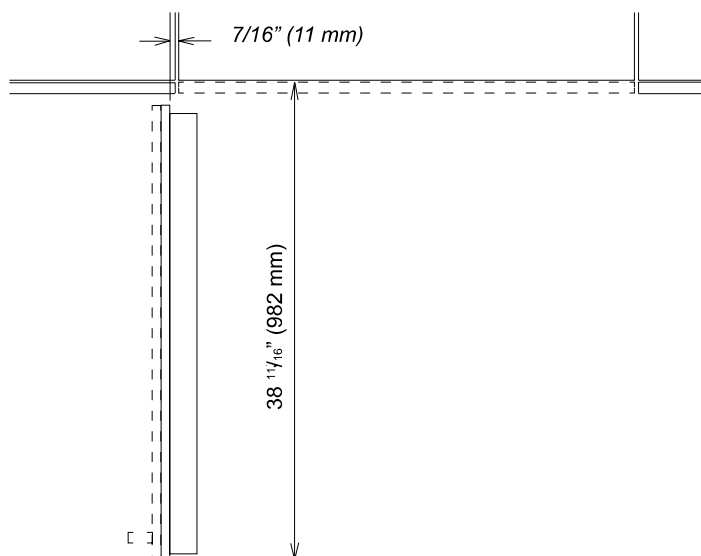
## HINGING DETAILS

### 90° Door

Thickness options



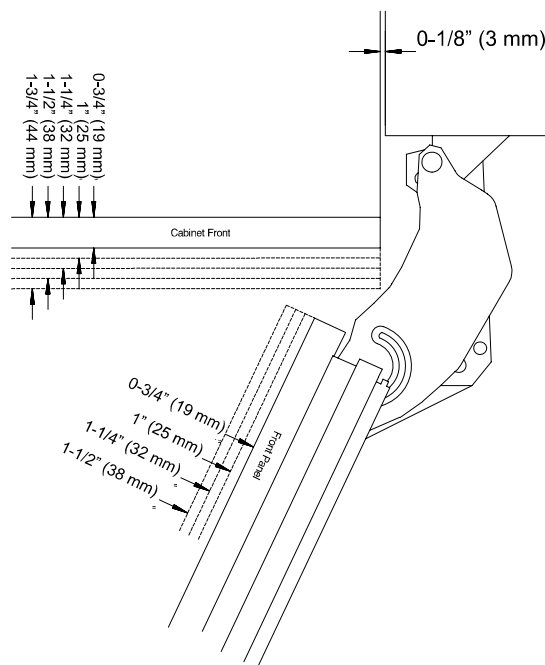
Door Swing



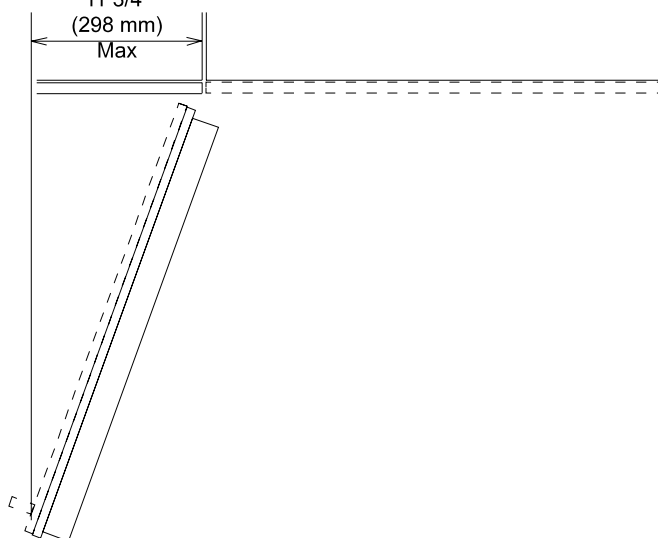
**NOTE:** Additional space needed depending on thickness of front panels and handle used

### 115° Door

Thickness options



Door Swing

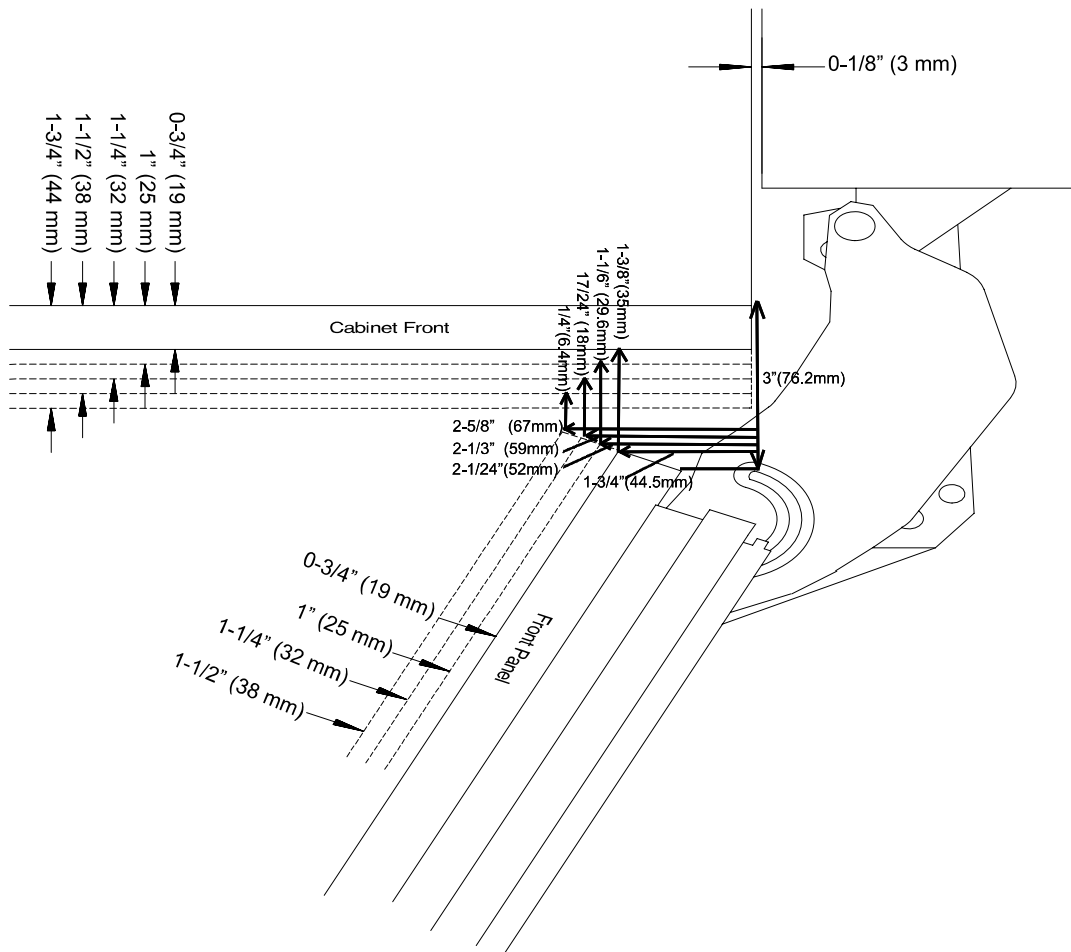


**NOTE:** Additional space needed depending on thickness of front panels and handle used

# Fully Integrated 36" Bottom Mount KF 1913 Vi / KF 1903 Vi



## HINGING DETAILS 115° OPENING

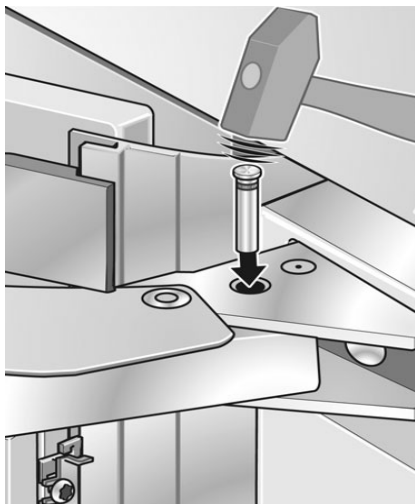
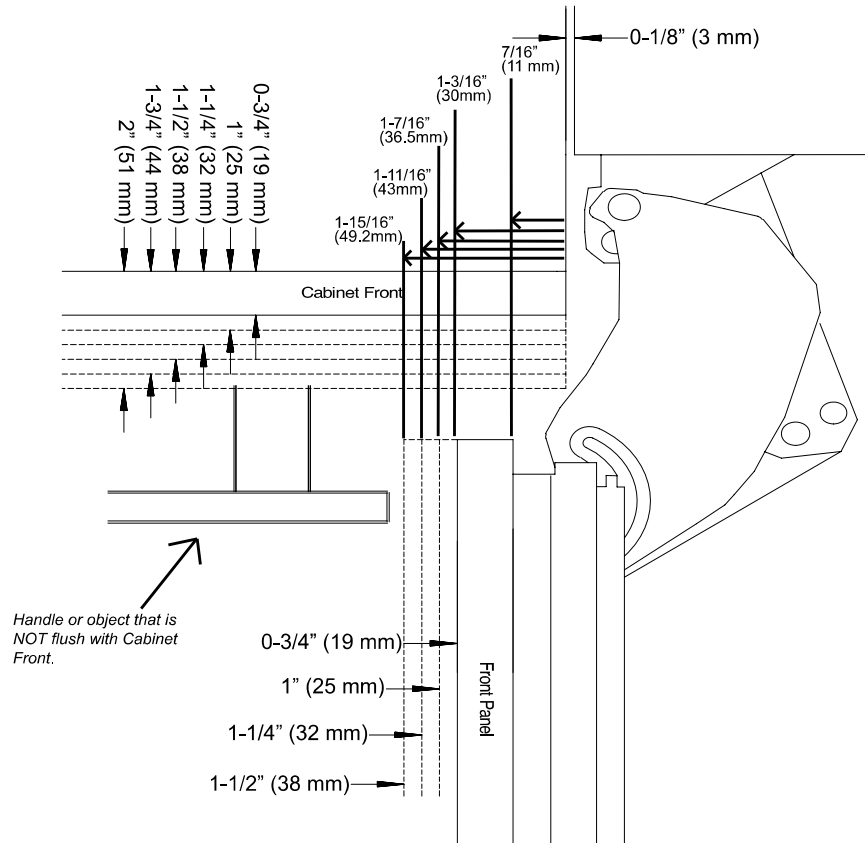




# Fully Integrated 36" Bottom Mount KF 1913 Vi / KF 1903 Vi



## HINGING DETAILS 90° OPEING



*When installing hinge side next to an appliance or object that is within range of the door panel, limit the door opening angle to 90°. This is done by installing the banking pin as illustrated. Insert the banking pin through the holes and drive in with a hammer.*