

Assembly Instruction for
Chest
CTBN150CH - CTBN350CH - CTBN450CH - CTBN750CH

Caution: Please read instructions thoroughly before unpacking assembly parts. Sharp, exposed staple tips can cause injury, therefore, for your protection, please remove any exposed staples used in packing.

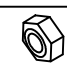
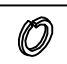



1. We recommend that you should assemble this product with the assistance of another person; this will make assembly easier, and will help to eliminate damage the product or injury to persons during assembly.

2. Be sure to check all packing materials carefully for small parts that may have come loose inside the carton during shipment.

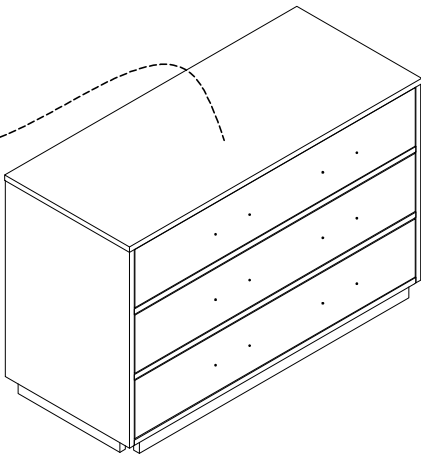
3. Please do not over tighten screws or bolts.

4. Please put all parts on a non-abrasive floor before assembly, and follow the assembly steps to assemble your newly purchased product correctly and efficiently.

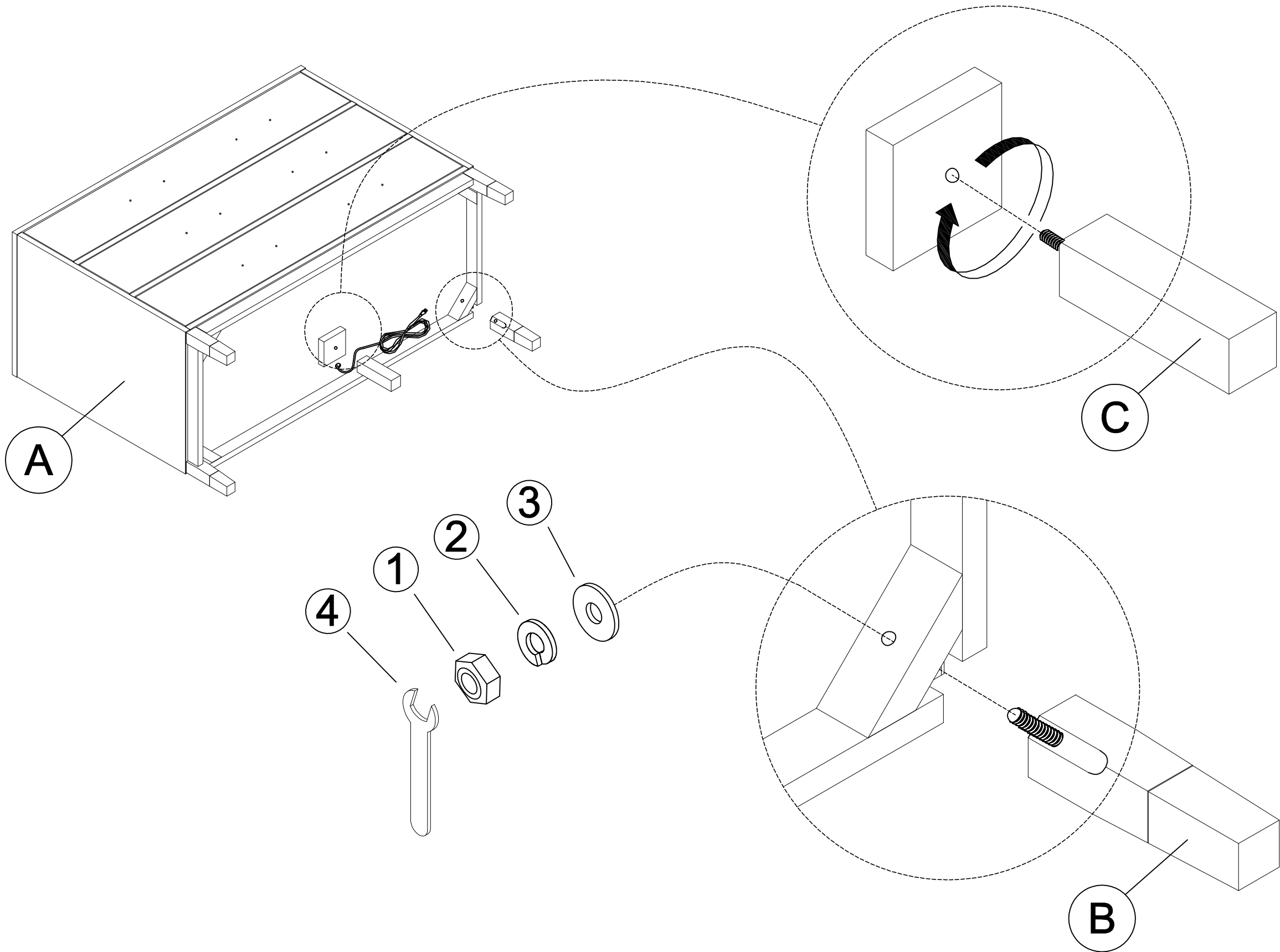
PART LIST			
NO.	PART DESC	CODE	Q'TY
A	CHEST BODY		1
B	LEG	PCTB150CHLEG1	4
		PCTB350CHLEG1	
		PCTB450CHLEG1	
		PCTB750CHLEG1	
C	CENTER LEG	PCTB150CHLEG2	1
		PCTB350CHLEG2	
		PCTB450CHLEG2	
		PCTB750CHLEG2	

HARDWARE LIST				
NO.	HARDWARE DESC		CODE	Q'TY
1		HEX NUT 5/16"	PCTBNHW	4
2		LOCK WASHER 5/16"		4
3		FLAT WASHER 5/16"		4
4		WRENCH #12MM		1
5		ANTI-TIPPING KIT	PCTBNATKTHS	1

STEP 1
Take out the foot box inside the drawer

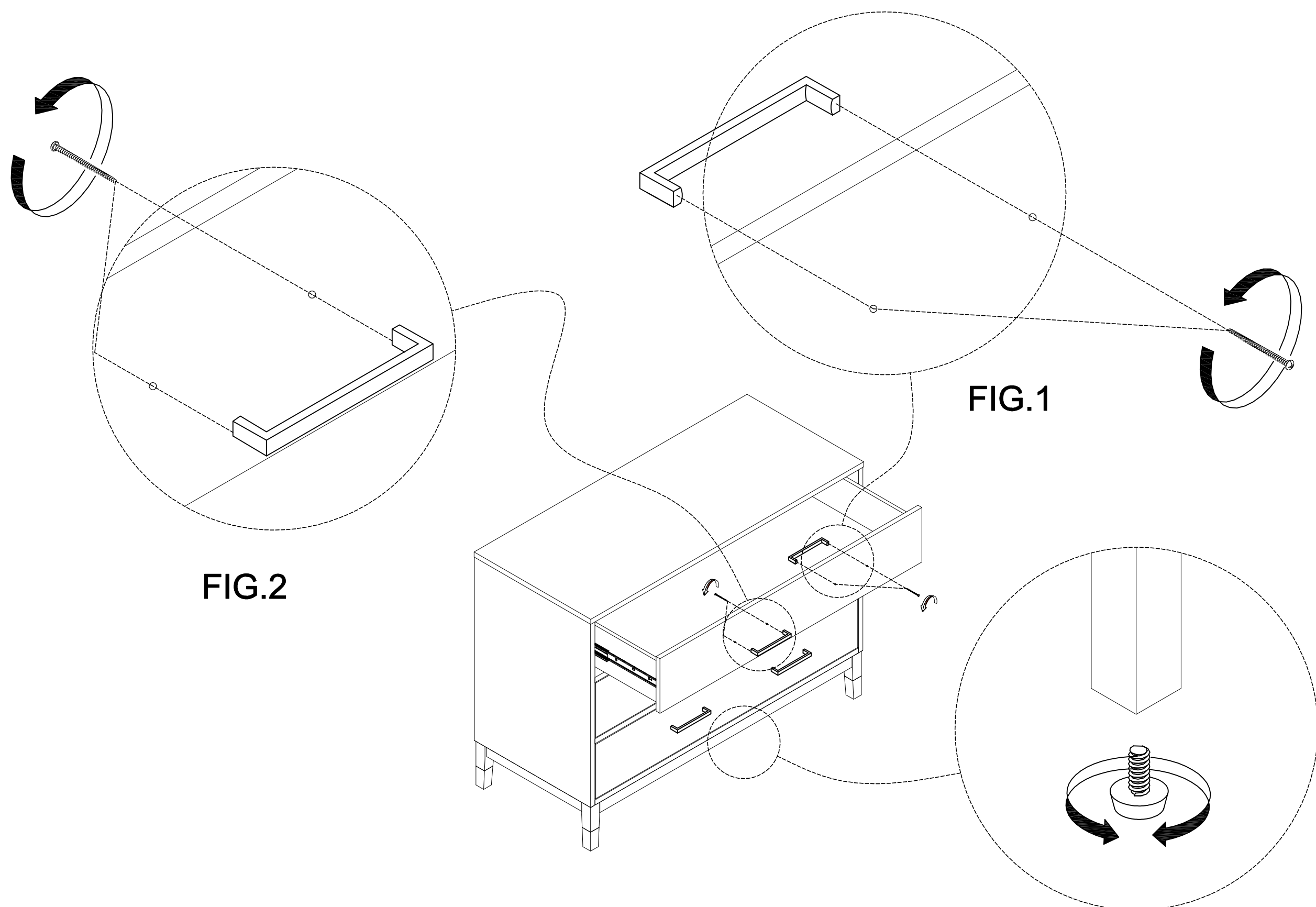


STEP 2



**Assembly Instruction for
Chest
CTBN150CH - CTBN350CH - CTBN450CH - CTBN750CH**

STEP 3



COMPLETED

