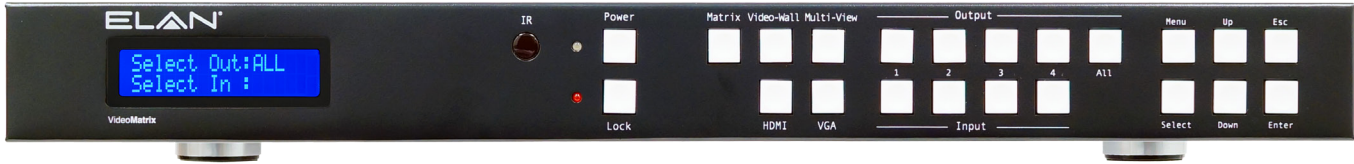


Seamless Matrix

ORDER NO. EL-4KM-VW44



The ELAN 4 x 4 Seamless HDMI Matrix allows you to watch up to 4 HDMI inputs on a single TV! Use the Video Wall feature to easily turn multiple video monitors into a single large scale image. ELAN: Your world, made simple.

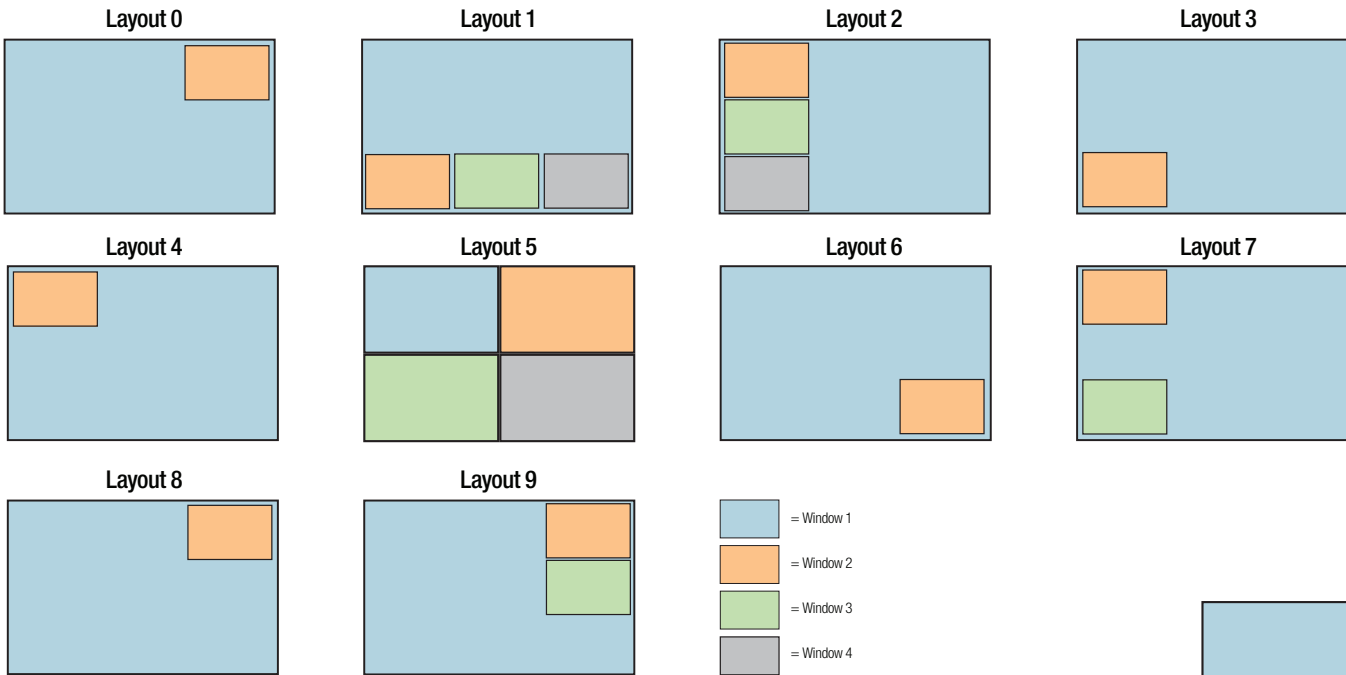


EL-4KM-VW44

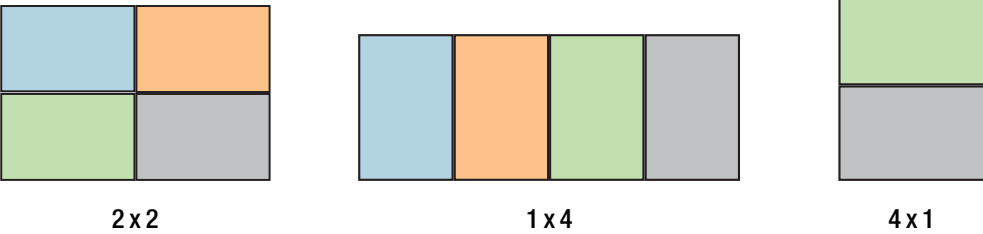
The ELAN EL-4KM-VW44 4 x 4 Seamless HDMI Matrix, is a multipurpose high-speed video processing system that can be set up for use in 1 of 3 different operating modes. The EL-4KM-VW44 can perform as a 4x4 seamless matrix switch, as a 2x2, 4x1 or 1x4 video wall solution, or as

a quad multi-view video display system. Source Inputs, including HDMI or VGA with associated L/R analogue audio, are easily configured. The ELAN Seamless HDMI Matrix enables taking projects to the next level and easily adds the custom experience clients seek.

MULTI-VIEW LAYOUT OPTIONS:



VIDEO WALL LAYOUT OPTIONS:

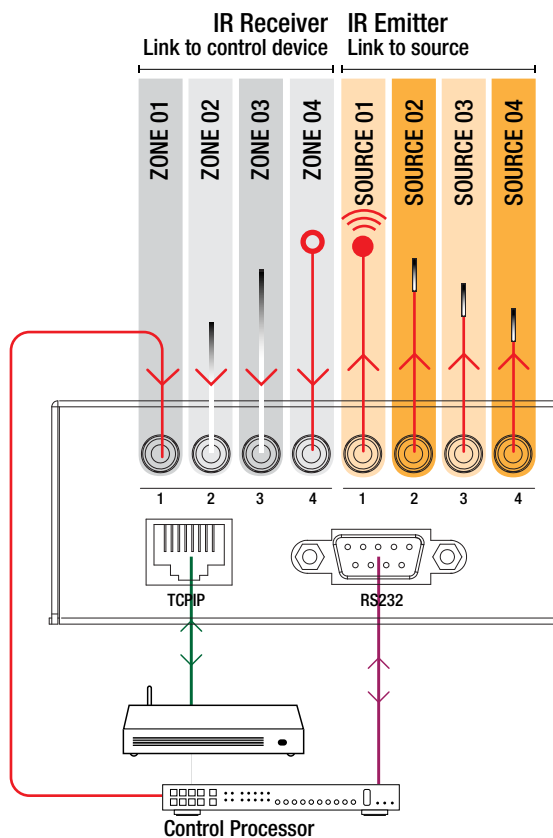




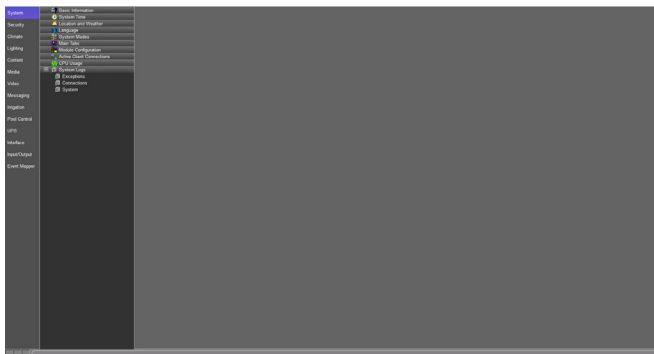
Seamless Matrix

ORDER NO. EL-4KM-VW44

The Seamless HDMI Matrix features four IR inputs and outputs, allowing source gear to be remotely located and easily controlled.



The Seamless HDMI Matrix is easily configured and added to ELAN projects using ELAN's Configuration Software. The EL-4KM-VW44 also features a web browser interface module for control and configuration of the matrix when used stand-alone or with a third-party control system. Control options include front-panel push buttons, IR remote control, RS-232 interface, and TCP/IP.



Seamless Matrix

ORDER NO. EL-4KM-VW44

FEATURES

- 3 Operational Modes:
 - 4 x 4 Matrix (selected HDMI or VGA Inputs)
 - Video Wall (2 x 2, 4 x 1, 1 x 4)
 - Multi-Viewer with preset layouts
- 4 Video Inputs – Configured as HDMI or VGA with associated L/R analogue audio
- Seamless Video Switching
- Supports Industry Standard Video Resolutions
- HDMI Output Fixed to 1080P at 60Hz
- HDCP Compliant
- Advanced EDID Management
- Supports HDMI 2CH PCM Audio Only
- IR Routing
- Web GUI for control and configuration
- Control via front panel IR, RS-232, and TCP/IP
- Works seamlessly with ELAN System Controllers

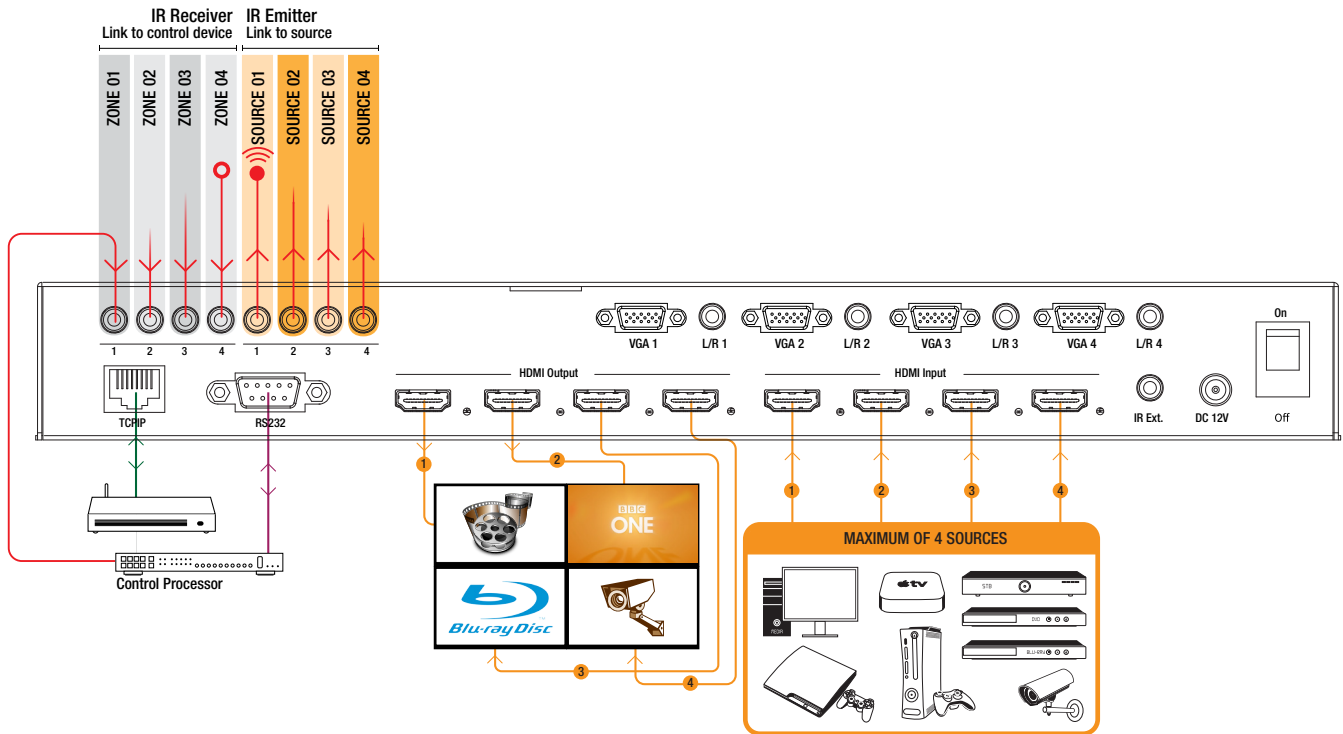
SPECIFICATIONS	
Video Input Connectors	4 x HDMI Type A, 19-pin, Female, 4 x VGA
Video Output Connectors	4 x HDMI Type A, 19-pin, Female
Audio Input Connectors	4 x 3.5mm Analogue Stereo Jack
RS-232 serial port	1x DB-9 female
TCP/IP Control	RJ45, Female
IR Input ports	5 x 3.5mm stereo jack
IR Output ports	4 X 3.5mm mono jack
Casing Dimensions (W x H x D)	17.35" x 1.8" x 7.1" (440mm x 45mm x 180mm)
Dimensions with connections (W x H x D)	17.35" x 1.8" x 7.4" (440mm x 45mm x 187mm)
Shipping Weight	8.85lbs (4.0kg)
Operating Temperature	32°F to 104°F (0°C to 40°C)
Storage Temperature	-4°F to 140°F (-20°C to 60°C)
Power Supply	12V/3A DC
Mounting Kit Included	



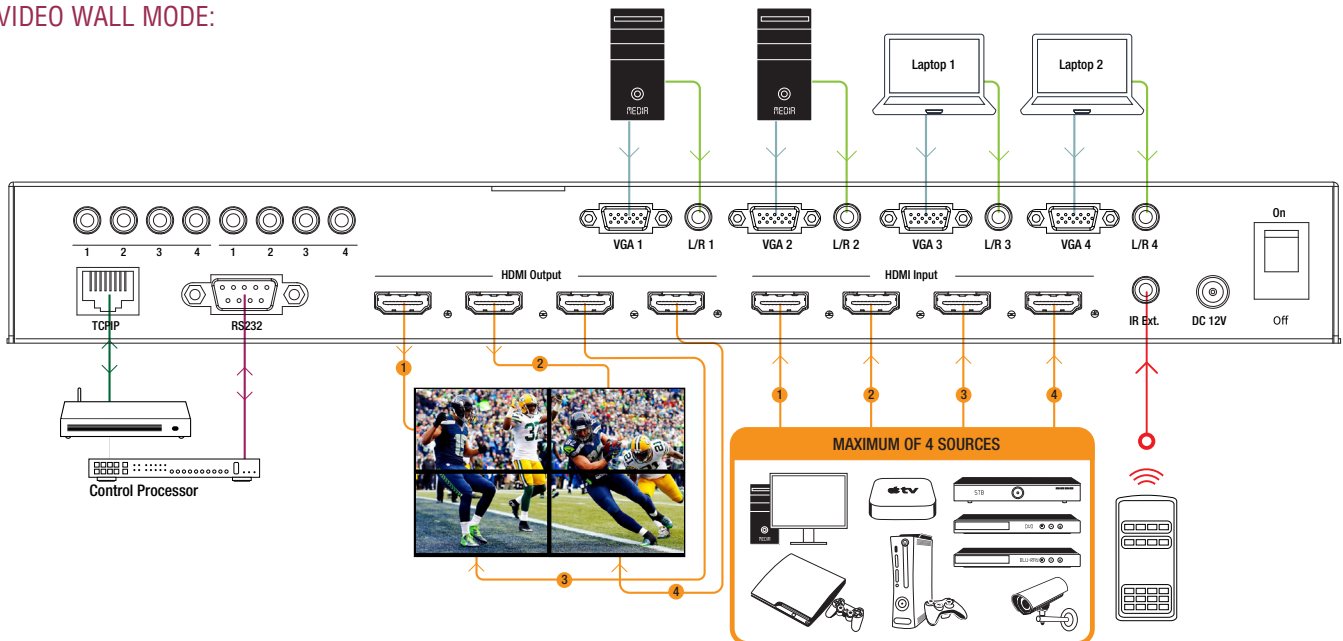
EL-4KM-VW44

Seamless Matrix

4 X 4 VIDEO MATRIX MODE:



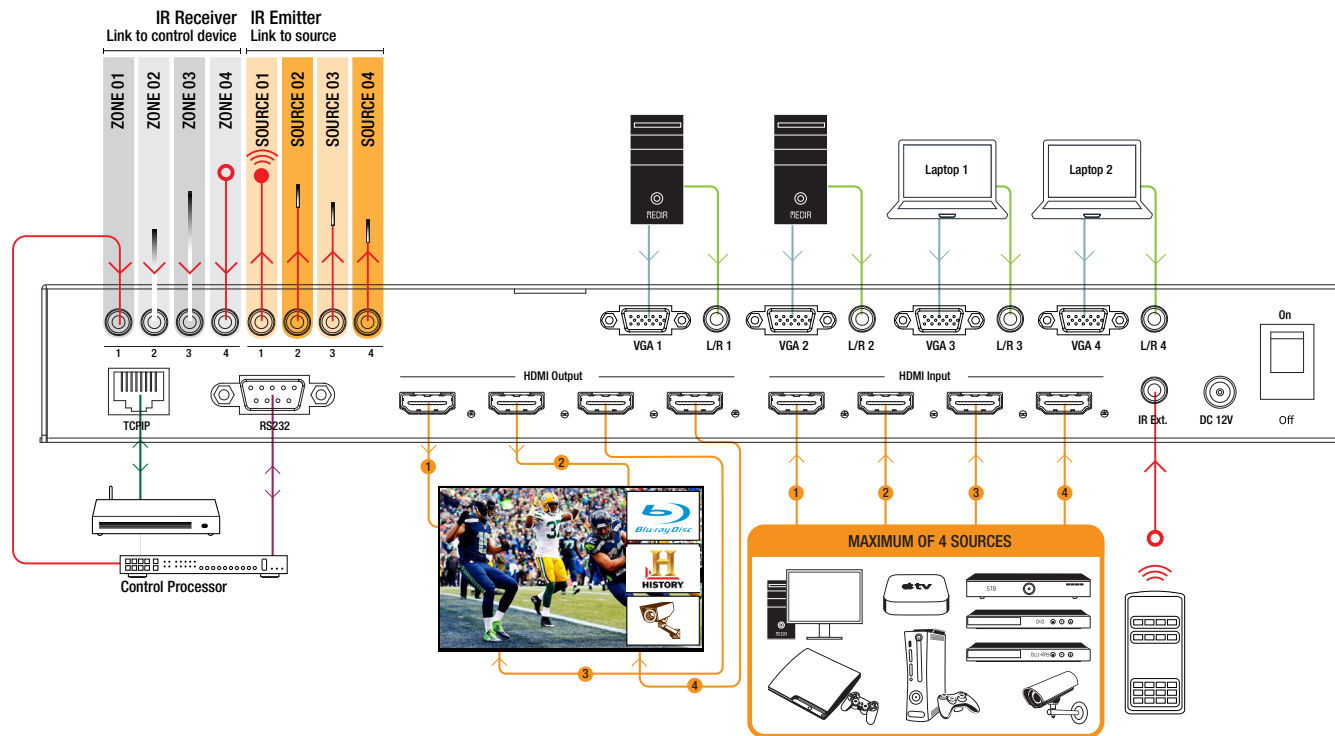
VIDEO WALL MODE:





Seamless Matrix

MULTI-VIEWER MODE:



MULTI-ROOM AUDIO AND VIDEO DISTRIBUTION



elanhomesystems.com