

**Product:** 30 Inch Wall Mount Hood

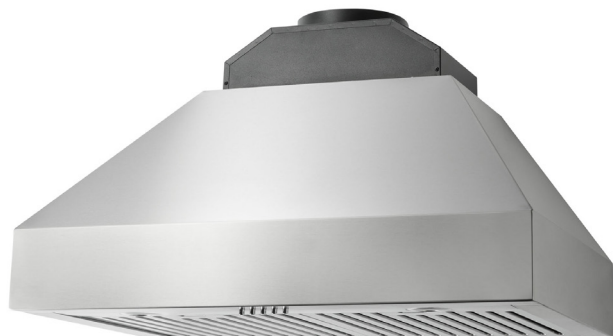
**Model Number:** TRH30P

## BLOWER RATING

BLOWER RATINGS	CFM	(dBA)
Low	460 CFM	50
Medium	650 CFM	59
High	1,000 CFM	67

## PRODUCT DIMENSIONS

Range Hood Size (in)	30
Product Width (in)	30
Product Depth (in)	20 1/2
Product Height (in)	14
Duct Length (in)	59
Duct Width (in)	7
Duct Diameter (in)	7
Duct Shape	Round
Gross Weight (lb.)	62.83



## FEATURES & BENEFITS

- + Powerful Suction** - 1,000 CFM of suction handles the odors, smoke and steam from multiple pots, pans and burners
- + LED Lighting** - Two 3.5-watt LED lights to illuminate your cooking area and save energy
- + Quiet Operation at High Speed** - Quiet operation keeps noise level at a maximum 67 decibels. Low speed: 530 CFM (50 dB); Medium speed: 700 CFM (59 dB); High speed: 1,000 CFM (67 dB)
- + Convertible** - Vent out or recirculating (ductless) option with carbon filters (not included)
- + Commercial-style Baffle Filter** - Large, commercial-style 430 grade stainless steel baffle filter maximizes airflow and minimizes grease while the hood is in operation.
- + Push Button Controls** - Easy-to-operate push button controls for power, fan and light
- + 7-inch Round Duct Vent** - 7-inch round duct vent for better ventilation performance and efficiency
- + Stainless Steel Finish** - Stainless steel finish offers modern design aesthetic and is built to withstand high heat, grease, oil and steam

## TECHNICAL DETAILS

Lighting	LED light x 2
Power	110V
Frequency	60HZ
Amperage	6A
Filter type	430SS Baffle filter x 2
Blower type	Internal
Control type	Button, no auto shut off No delayed shut off
Color/Finish	Stainless steel
Installation Type	Wall Mount

## ACCESSORIES (NOT INCLUDED)

Charcoal Filter	FT05
-----------------	------

**WARRANTY: 24 MONTHS ON PARTS AND LABOR**



12" (305mm) Top Depth

