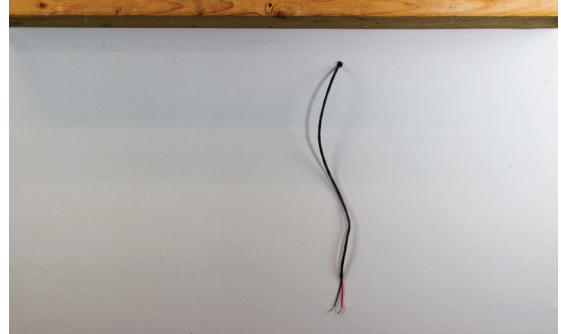
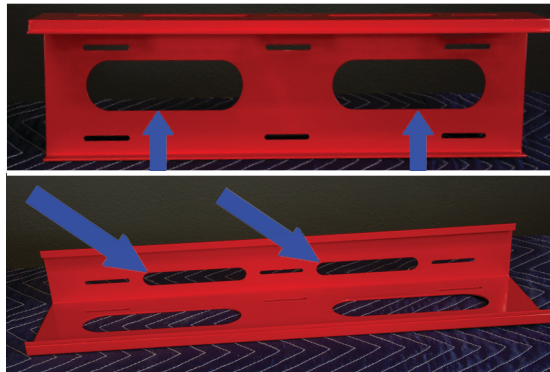


- 1** Take the bracket off of the back of the speaker by using your hand, and pulling one side of the bracket out.



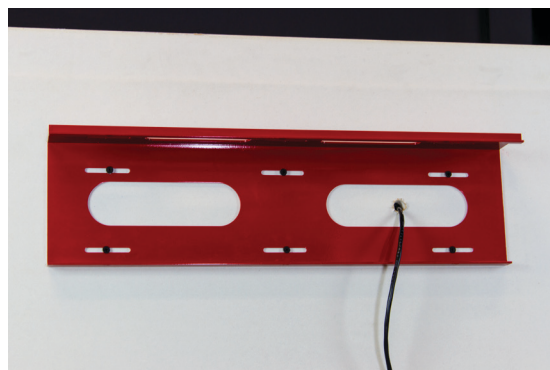
- 2** Next, determine if your wires are located in the ceiling or the wall.



- 3** If the wires are in the wall, then run it through the bottom slots on the bracket (top photo). If the wire is in the ceiling, then run the wire through the top slots of the bracket (bottom photo).



- 4** If the speaker is being installed flush with the wall and ceiling, then install all nine screws to secure the bracket.

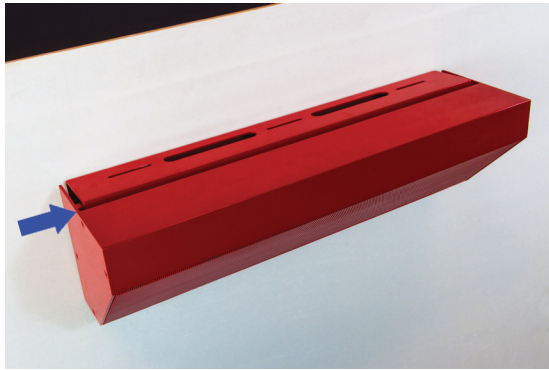


- 5** The bracket can also be secured to a wall using just six wall screws.

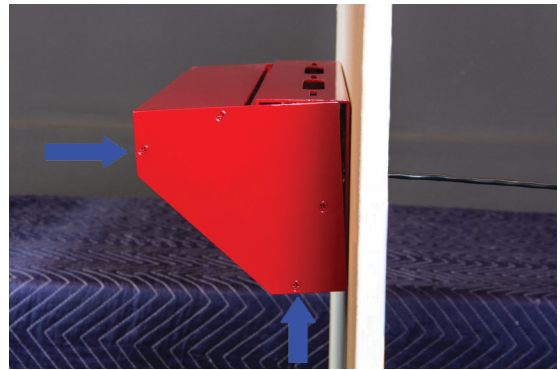


- 6** Now connect your wires to the speaker. (Red to red, and black to black)

WEDGE SERIES INSTALLATION GUIDE



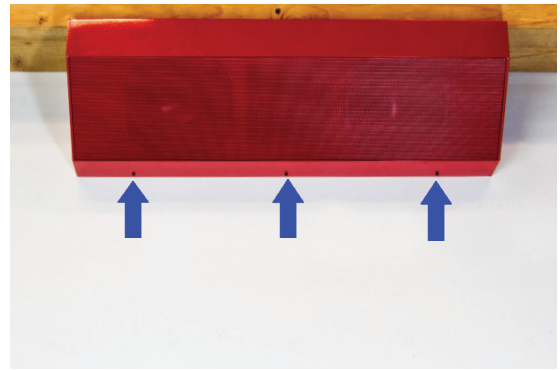
- 7** Now, mount the speaker onto the bracket by guiding the upper channel of the speaker into the top portion of the bracket.



- 8** Once you have the speaker mounted into place, then lift the speaker from the bottom and use a fist to pound the speaker back into the wall in order to make the speaker flush.



- 9** The speaker should sit flush with the wall and/or ceiling before proceeding to the next step.



- 10** Finally, tighten down the three set screws, with the hex key we have provided, located on the bottom of the speaker.



Installation
Video

