

GLXX-HDSW8

8 Channel Heavy Duty Switch Module

The GLXX-HDSW8 is a Crestron® Green Light Express® switching module chassis for up to 8 channels of heavy duty power switching. The chassis requires **GLR-HD-1P** (single pole) or **GLR-HD-2P** (double pole) heavy duty relays. The module is part of a complete Crestron engineered GLPX Green Light Express panel.

For more information on Crestron Green Light commercial lighting products, please contact Crestron **Sales Support Services**.

SPECIFICATIONS

Load Ratings

Uses modular relays; Refer to single pole ([GLR-HD-1P](#)) or double pole (GLR-HD-2P)

Power Requirements

Requires 24 Volts DC, delivered via 16 pin GLXX-CTRL

Connectors

(2) 16-pin IDC headers; Connect to adjacent module or GLXX-CTRL using interconnect cable provided

Environmental

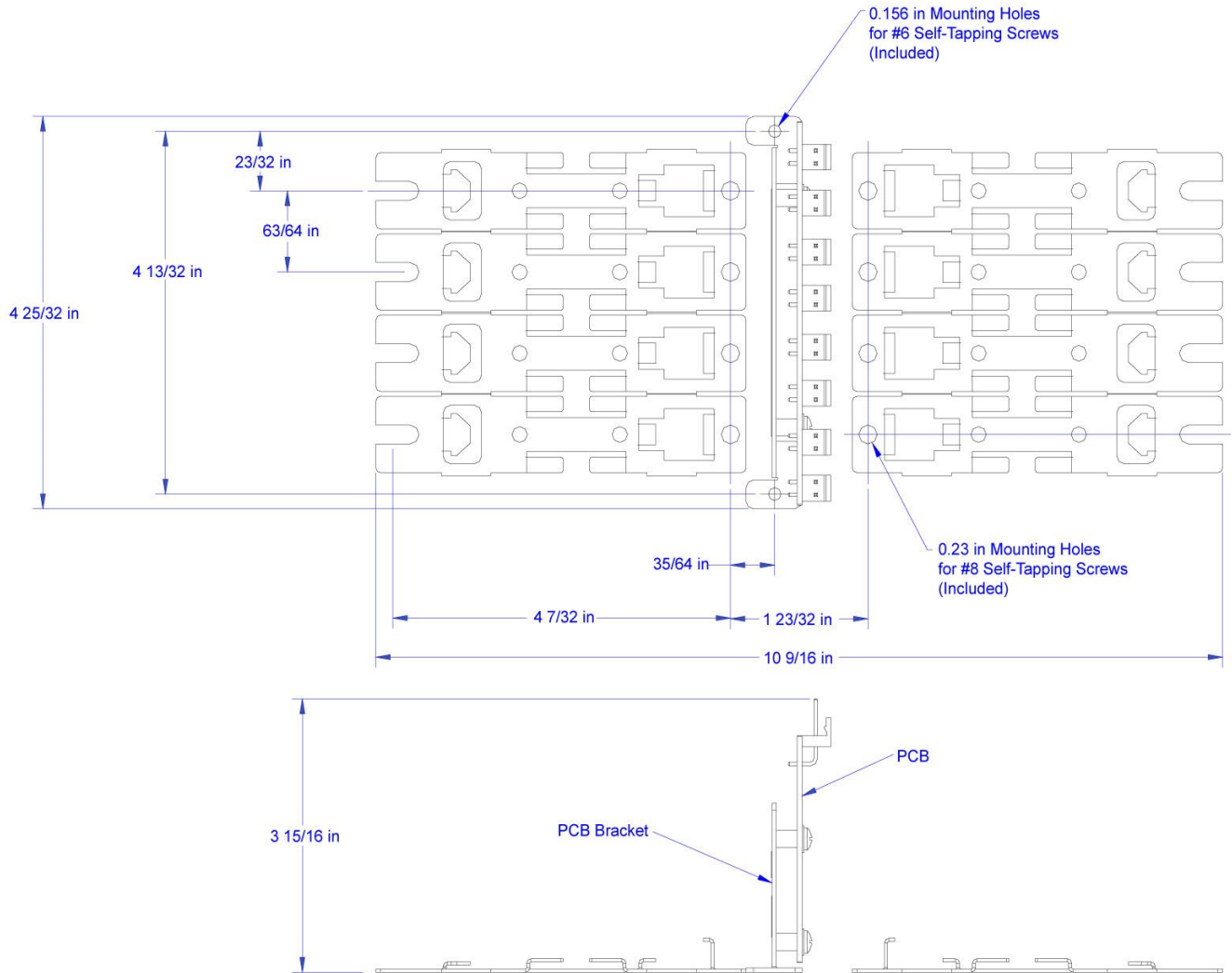
Temperature: 32° to 104°F (0° to 40°C)
Humidity: 10% to 90% RH (non-condensing)
Heat Dissipation: 26 BTU/Hr (fully populated with relays)

Electrical Regulatory Certifications

UL508, Section 41 (Endurance Test) and Section 61C (Electronic Ballasts)
IEC60669-2-1, Section 19.102 (Contact mechanisms incorporated in electronic switches, intended for fluorescent lamp circuits or

GLXX-HDSW8

8 Channel Heavy Duty Switch Module



NOTES:

Components shown must be assembled into Crestron GLEX-FT Enclosures or Crestron approved equivalent

Dimension shown indicate location of components when assembled in a GLEX-FT enclosure

