

AXOR Montreux
Wall-Mounted Widespread Faucet Trim with Lever Handles, 1.2 GPM
 Finishes : **polished nickel** Part no. : **16534831**



Description

Features

- Aerated spray
- Flow: 1.2 GPM (4.5 L/Min)
- 90° ceramic valves

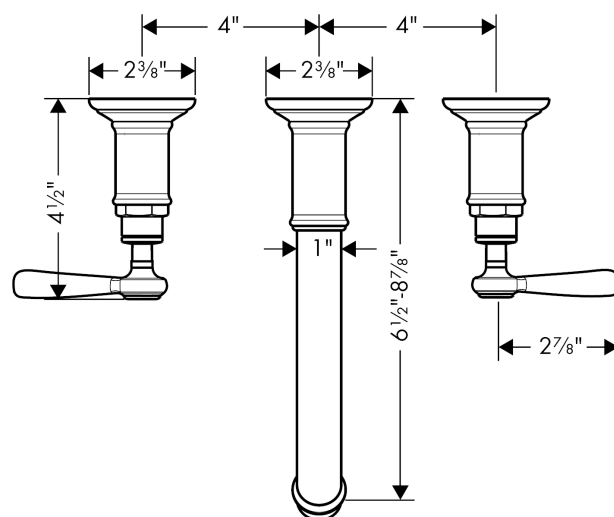
Technology



Product image



Scale drawing

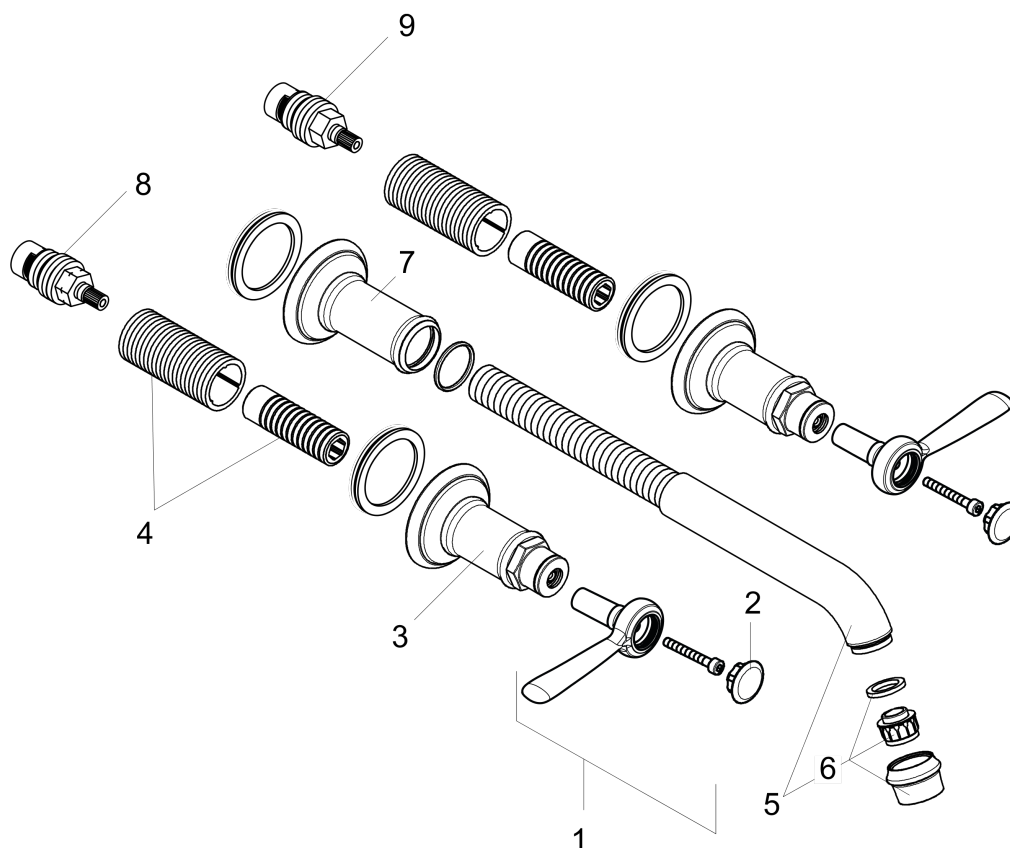


AXOR Montreux
Wall-Mounted Widespread Faucet Trim with Lever Handles, 1.2 GPM
 Finishes : **polished nickel** Part no. : **16534831**



Exploded drawing

Year of production: >07/16



AXOR Montreux
Wall-Mounted Widespread Faucet Trim with Lever Handles, 1.2 GPM
 Finishes : **polished nickel** Part no. : **16534831**



Spare parts list

Year of production: >07/16

| Pos. | Description | Part no. | PC | PU |
|------|---|----------|----|----|
| 1 | handle | 16691830 | 0 | 1 |
| 2 | set of screw covers, cold / hot water / neutral | 97987000 | 0 | 1 |
| 3 | escutcheon for handle | 98578000 | 0 | 1 |
| 4 | fixing set | 96392000 | 0 | 1 |
| 5 | spout cpl. | 98574830 | 0 | 1 |
| 6 | aerator M22x1 (7 l/min) | 98583830 | 0 | 1 |
| 7 | escutcheon for spout | 98576830 | 0 | 1 |
| 8 | shut off unit left closing | 96351001 | 0 | 1 |
| 9 | shut off unit right closing | 96350001 | 0 | 1 |
| a | base body | 10303181 | 0 | 1 |