

**ASSEMBLY INSTRUCTIONS**  
**COASTER FINE FURNITURE**



*Fine Furniture for every stage of life*

**704127**  
**END TABLE**

ITEM:704127

## ASSEMBLY INSTRUCTIONS

### ASSEMBLY TIPS:

1. Remove hardware from box and sort by size.
2. Please check to see that all hardware and parts are present prior to start of assembly.
3. Please follow attached instructions in the same sequence as numbered to assure fast & easy assembly.



### WARNING!

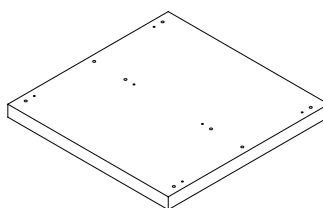
1. Don't attempt to repair or modify parts that are broken or defective. Please contact the store immediately.
2. This product is for home use only and not intended for commercial establishments.

ASSEMBLY TIME

30 MINUTES

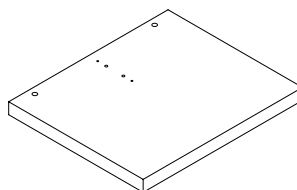
## PARTS IDENTIFICATION

A TOP



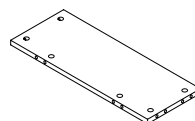
1 PC

B SIDE PANEL



2 PCS

C BACK PANEL



1 PC

## HARDWARE IDENTIFICATION

Z

NO	DESCRIPTION	FIGURE	Q'TY	NO	DESCRIPTION	FIGURE	Q'TY
1	GLUE 15g		1 PC	4	CAM LOCK Ø15x12mm SR		10 PCS
2	WOODEN DOWEL Ø 8x30mm		12 PCS	5	PLASTIC FEET Ø15mm		4 PCS
3	CAM BOLT Ø7x35.5mm SR		10 PCS	6	STICKER Ø20mm		2 PCS

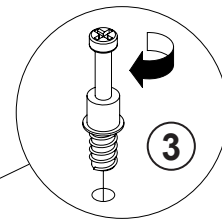
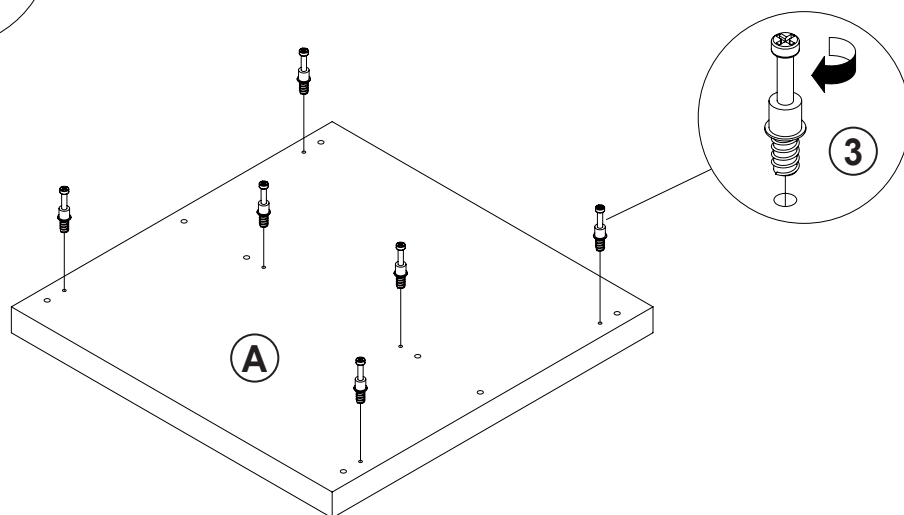
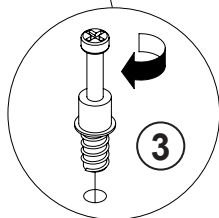
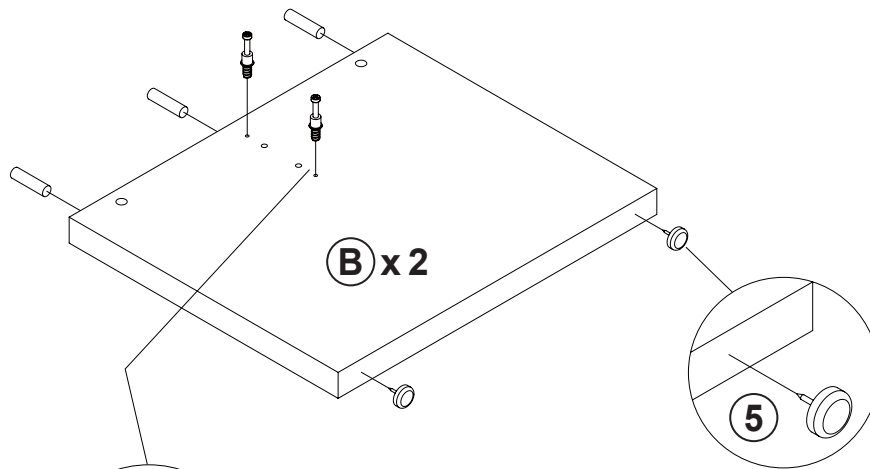
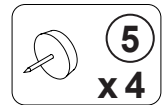
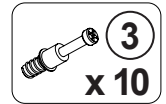
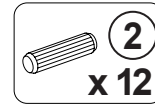
### NOTE:

Phillips head screw driver is required in the assembly process; however, manufacturer does not provide this item.

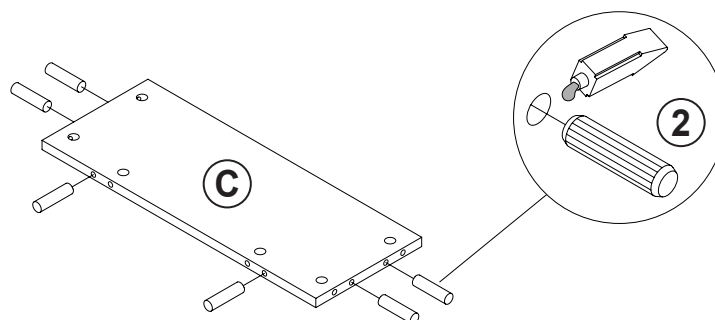
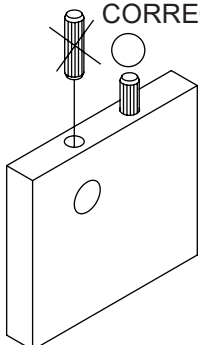
ITEM: **704127**

**STEP 1**

**COASTER**  
FINE FURNITURE



INCORRECT  
CORRECT

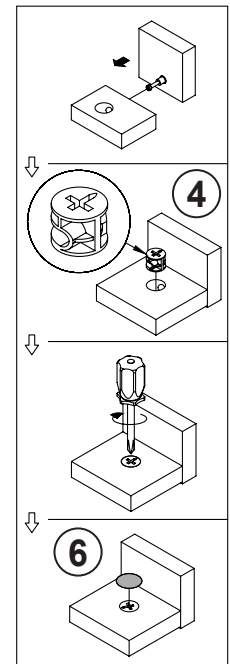
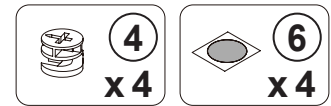
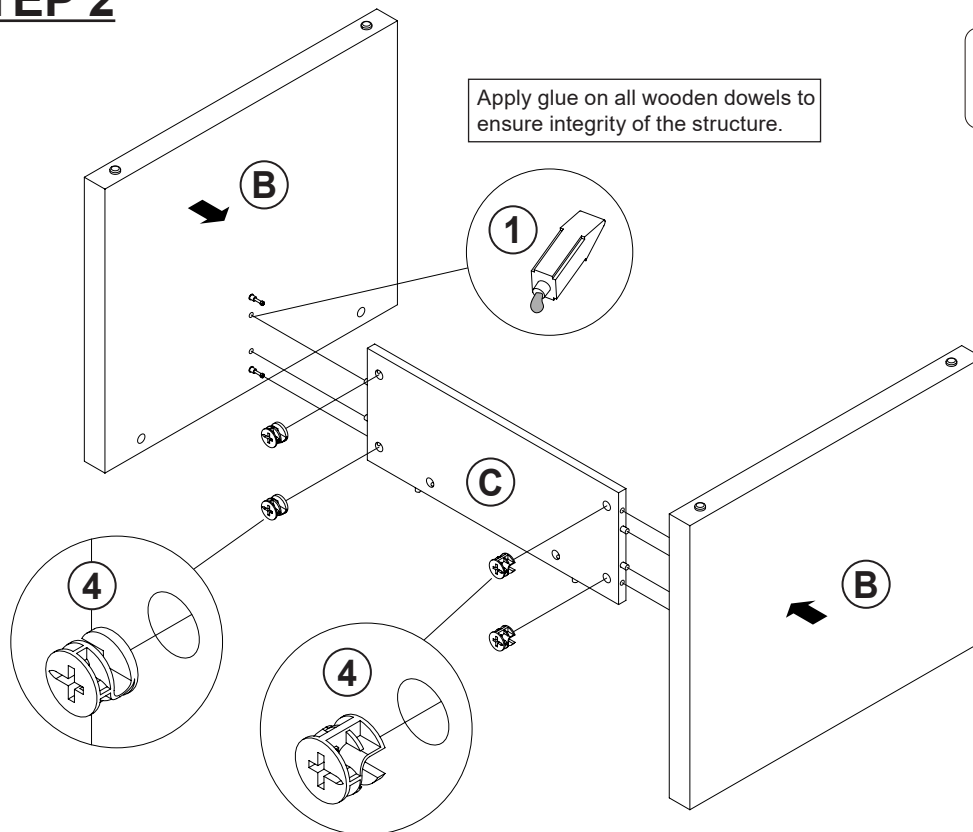


Apply glue on all wooden dowels to ensure integrity of the structure.

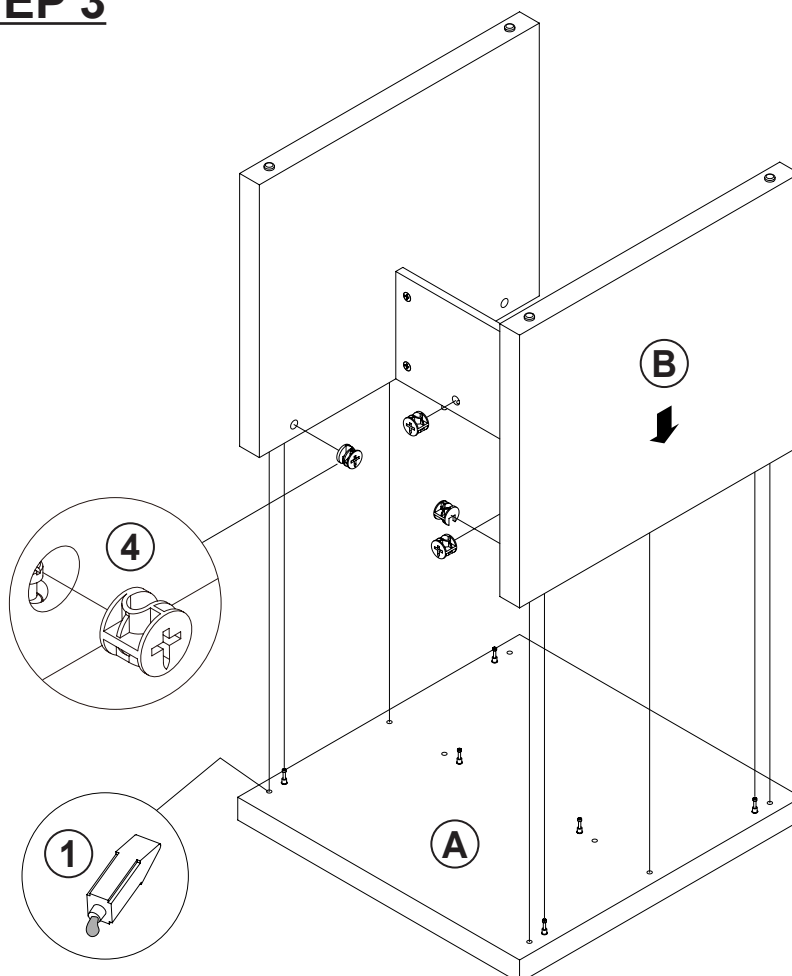
ITEM: **704127**

## STEP 2

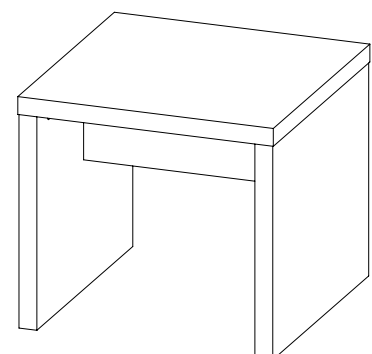
**COASTER**  
FINE FURNITURE



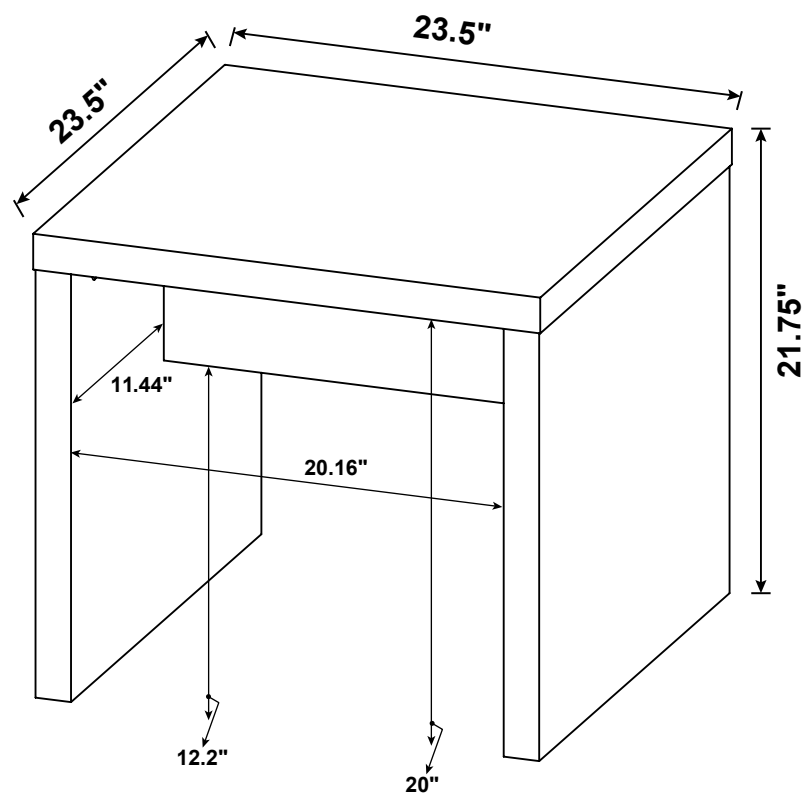
## STEP 3



**COMPLETE**



ITEM: 704127



**Note :** Dimension tolerance  $\pm 5\%$

**ASSEMBLY INSTRUCTIONS**  
**COASTER FINE FURNITURE**



*Fine Furniture for every stage of life*

**704128**  
**COFFEE TABLE**

# ITEM:704128

## ASSEMBLY INSTRUCTIONS

### ASSEMBLY TIPS:

1. Remove hardware from box and sort by size.
2. Please check to see that all hardware and parts are present prior to start of assembly.
3. Please follow attached instructions in the same sequence as numbered to assure fast & easy assembly.



### WARNING!

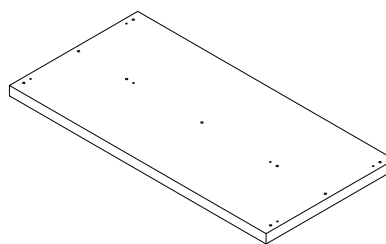
1. Don't attempt to repair or modify parts that are broken or defective. Please contact the store immediately.
2. This product is for home use only and not intended for commercial establishments.

ASSEMBLY TIME

30 MINUTES

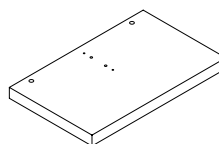
## PARTS IDENTIFICATION

A TOP



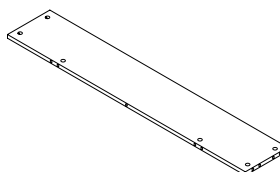
1 PC

B SIDE PANEL



2 PCS

C BACK PANEL



1 PC

## HARDWARE IDENTIFICATION

Z

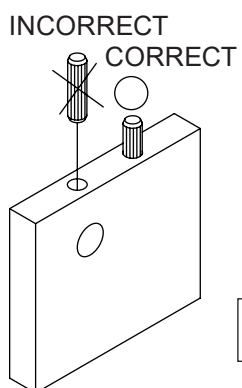
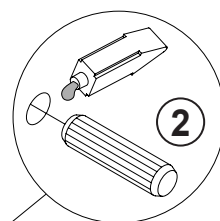
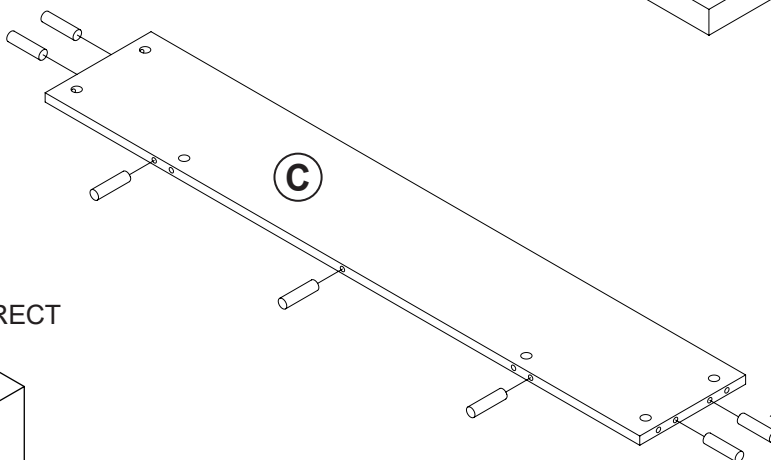
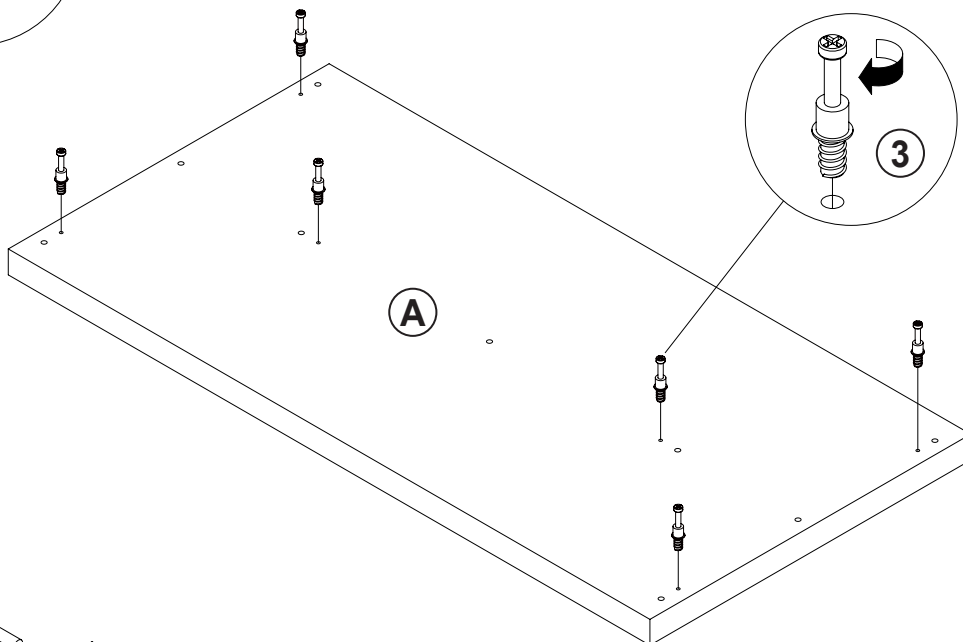
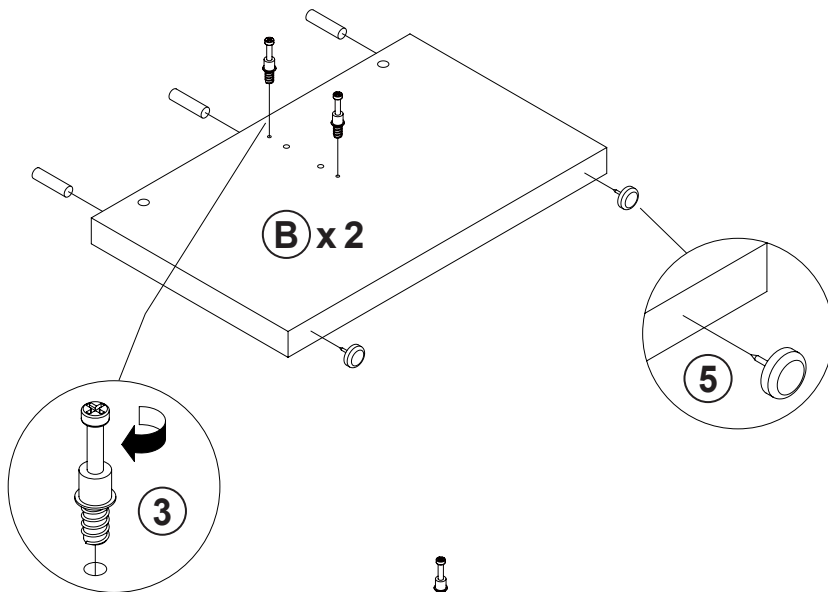
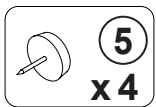
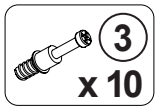
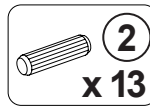
NO	DESCRIPTION	FIGURE	Q'TY	NO	DESCRIPTION	FIGURE	Q'TY
1	GLUE 15g		1 PC	4	CAM LOCK Ø15x12mm SR		10 PCS
2	WOODEN DOWEL Ø 8x30mm		13 PCS	5	PLASTIC FEET Ø15mm		4 PCS
3	CAM BOLT Ø7x35.5mm SR		10 PCS	6	STICKER Ø20mm		2 PCS

### NOTE:

Phillips head screw driver is required in the assembly process; however, manufacturer does not provide this item.

ITEM: 704128

## STEP 1



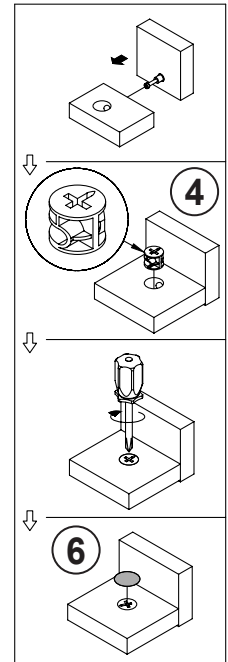
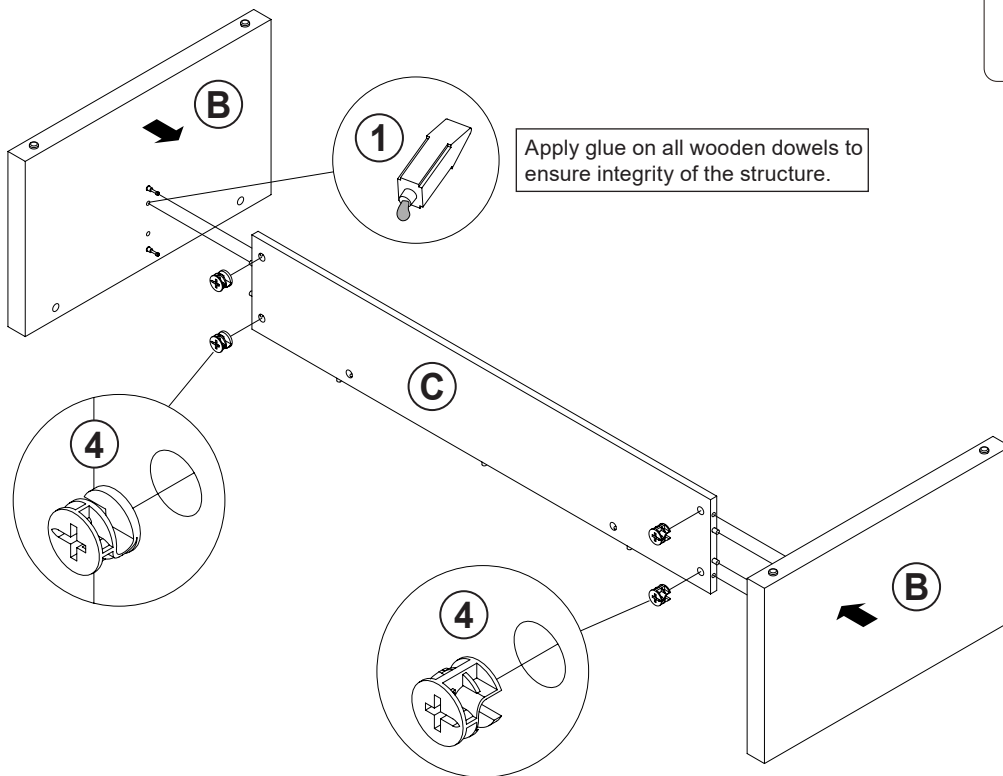
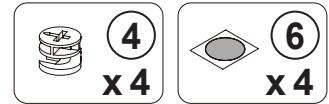
Apply glue on all wooden dowels to ensure integrity of the structure.



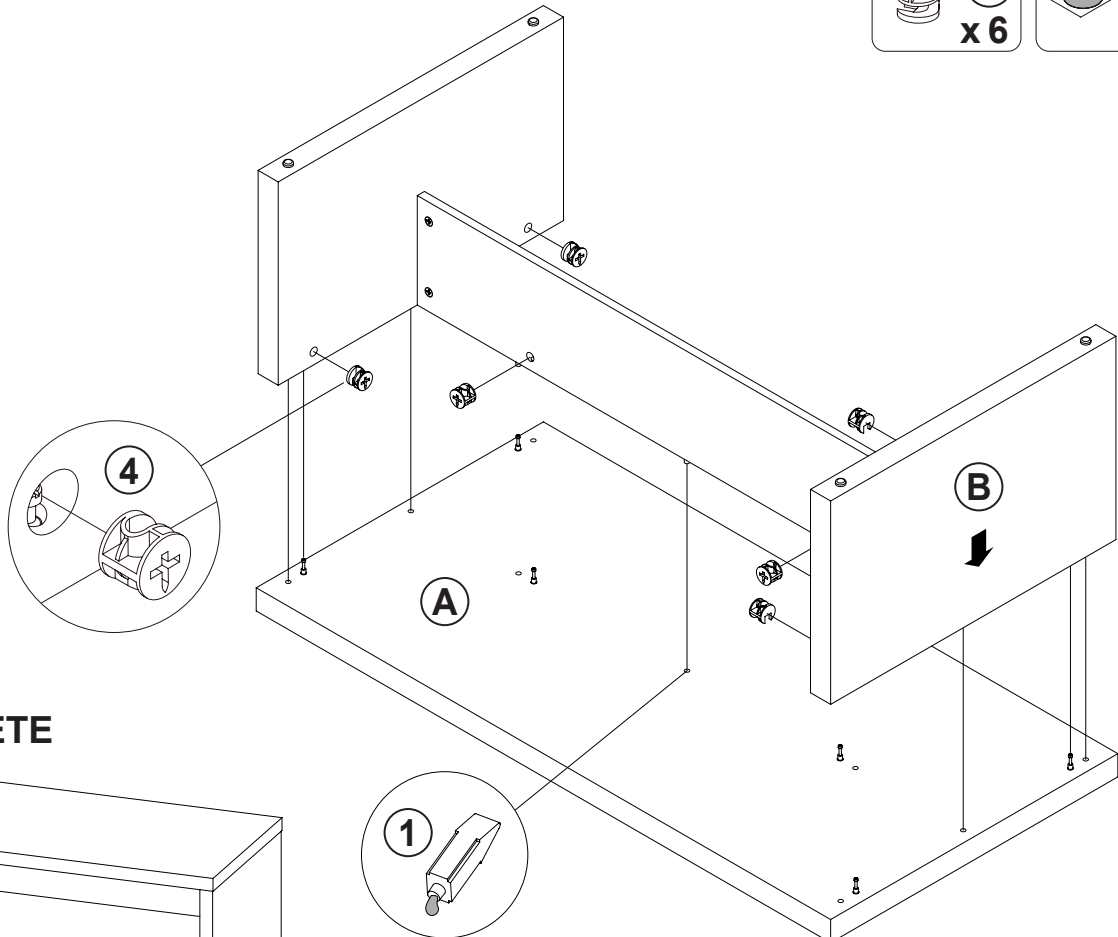
ITEM: 704128

## STEP 2

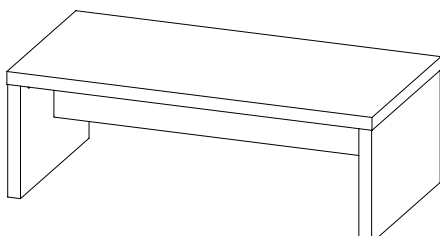
**COASTER**  
FINE FURNITURE



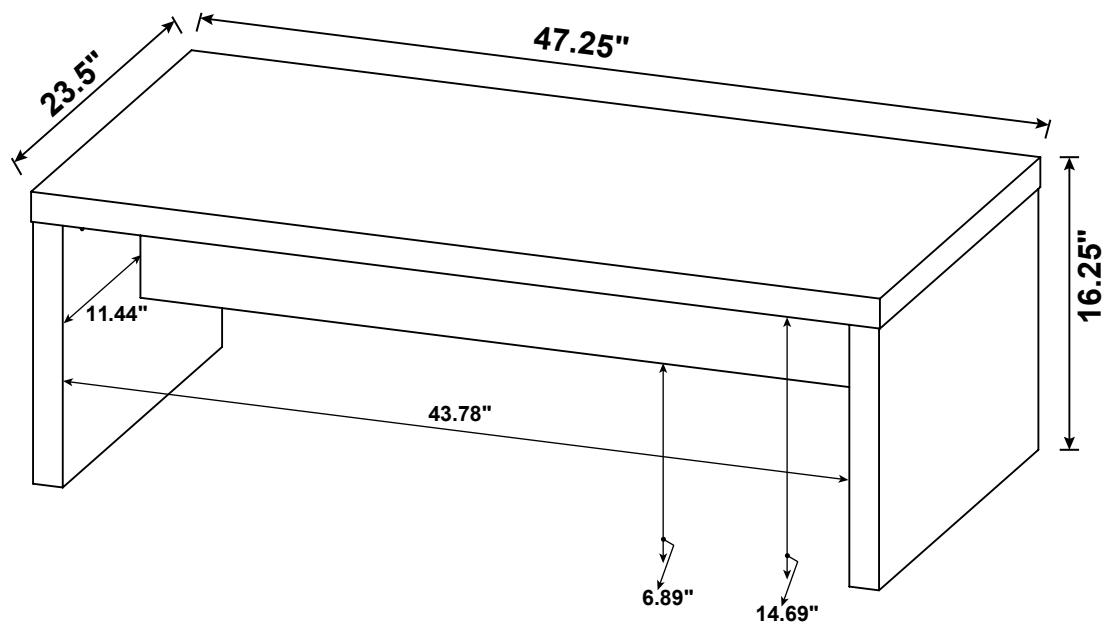
## STEP 3



**COMPLETE**



ITEM: 704128



**Note :** Dimension tolerance  $\pm 5\%$