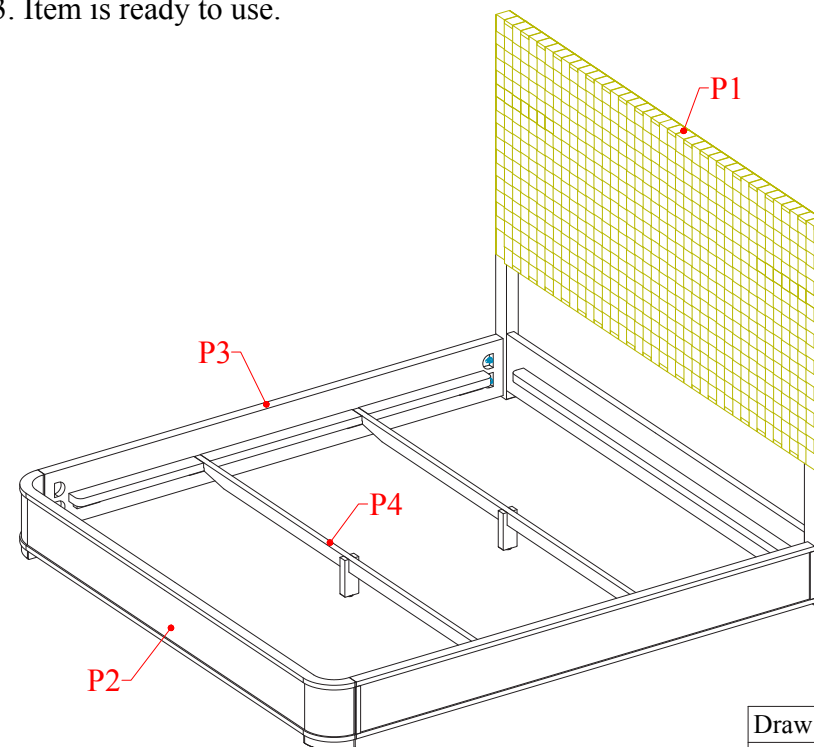


PACKING LIST

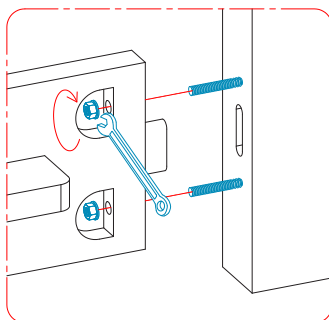
No.!	Name of Item	Q'ty	U/M
1	P1. Headboard	01	pc
2	P2. Footboard	01	pc
3	P3. Side rail	02	pcs
4	P4. Slat bed	02	pcs
HARDWARE			
5	Steel open wrench	01	pc

INSTRUCTIONS :

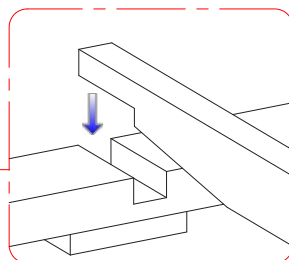
1. Assemble the side rail (P3) to the headboard (P1) and footboard (P2), then insert hexagonal nut & washers, use steel open wrench to turn clockwise direction securely. Refer detail 'A'
2. Attach the slat bed (P4) to the side rail. Refer detail 'B'
- Adjust all the glider for levelling if necessary. Refer detail 'C'
3. Item is ready to use.



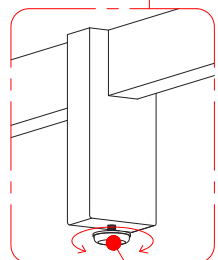
Detail 'A'



Detail 'B'



Detail 'C'



Adjustable glider