



HOSHIZAKI

Parts List

Modular Crescent Cuber

Models

KM-1100MAJ, MWJ, MRJ, MRJZ



hoshizakiamerica.com

Number: 71392
Issued: 12-12-2017
Revised: 8-11-2025

CONTENTS

Auxiliary Codes.....	3
Note About Ordering Parts	3
A. Main Assembly & Refrigeration Circuit	4
KM-1100MAJ	4
KM-1100MWJ	8
KM-1100MRJ(Z)	12
B. Water Circuit	16
C. Control Box Assembly	20
D. Accessories & Labels	23

Auxiliary Codes

KM-1100MAJ

G-0 August 2017
H-0 January 2018
J-0 January 2019
K-0 January 2020
L-0 January 2021
L-1 April 2021
L-2 June 2021
L-3 August 2021
L-1(M) December 2021
M-0 January 2022
N-0 January 2023
N-1 September 2023
P-0 January 2024
P-2 July 2024
P-3 August 2024
P-4 October 2024
Q-0 January 2025
Q-1 February 2025

KM-1100MWJ

G-0 August 2017
H-0 May 2018
K-0 February 2020
L-0 March 2021
L-1 May 2021
L-2 June 2021
L-3 August 2021
L-4 September 2021
L-0(K) October 2021
M-0 January 2022
N-0 April 2023
P-0 February 2024
P-3 September 2024
P-4 October 2024
Q-1 February 2025

KM-1100MRJ

G-0 August 2017
G-1 December 2017
H-0 January 2018
J-0 February 2019
K-0 February 2020
L-0 March 2021
L-1 April 2021
L-2 June 2021
L-3 August 2021
L-4 September 2021
L-0(K) October 2021

KM-1100MRJZ

M-0 January 2022
N-0 January 2023
N-1 September 2023
P-0 February 2024
P-2 July 2024
P-3 September 2024
P-4 October 2024
Q-0 January 2025

Auxiliary Code Breakdown

The auxiliary code is the first two characters in the serial number. The first character indicates the year. Years progress or regress in alphabetical order. The series runs from "A" through "V" and the letters "I" and "O" are skipped. The second character indicates significant part changes within a year. Base is "0" and this number advances for each change. In cases where there is a letter in parentheses, this designates the month. This is the last character in the serial number. The series runs from "(A)" through "(M)" and the letter "(I)" is skipped. This designation is only included when identifying a parts change within an auxiliary code.

Note About Ordering Parts

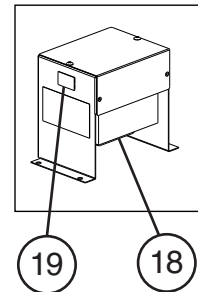
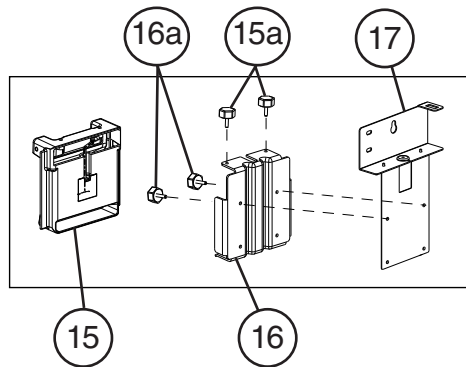
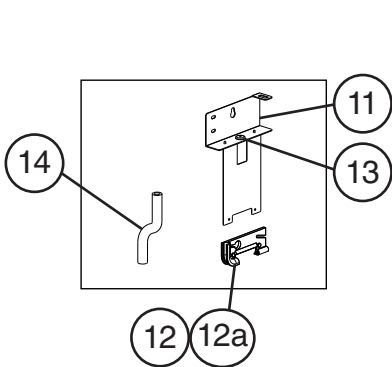
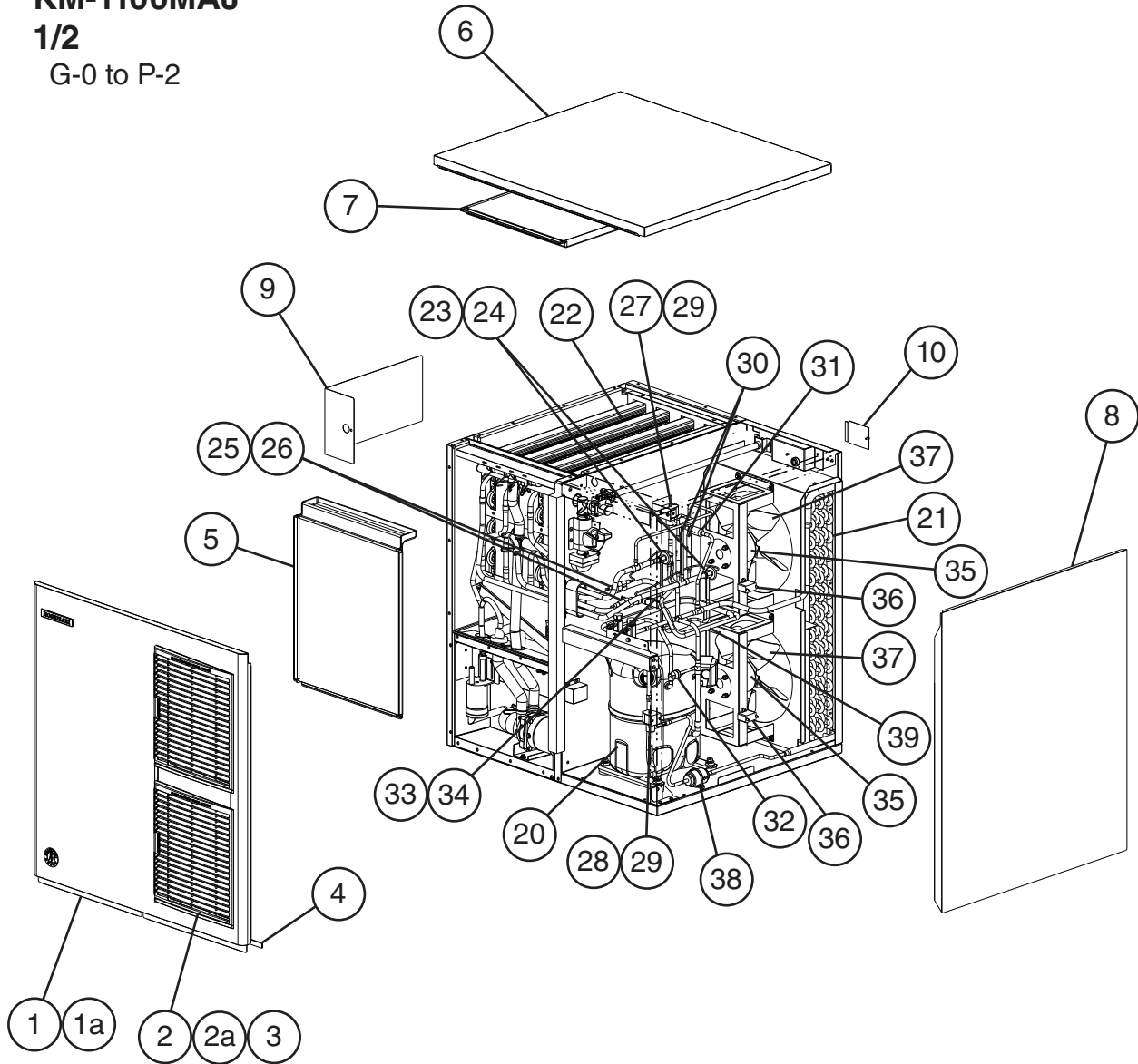
Most assemblies cannot be ordered as complete units; parts in the assemblies generally must be ordered separately.

A. Main Assembly & Refrigeration Circuit

KM-1100MAJ

1/2

G-0 to P-2



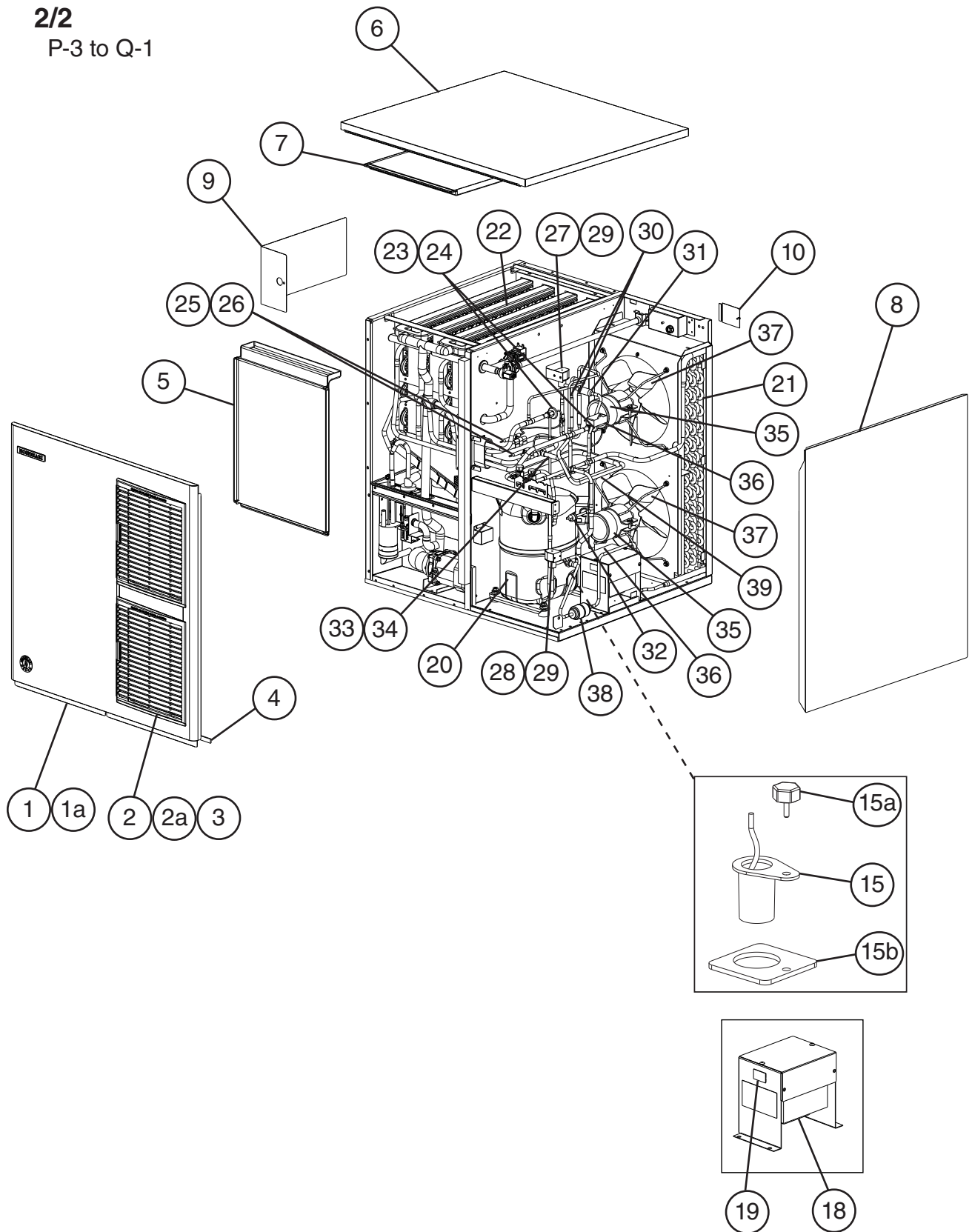
For Bin Control Thermostat,
see "C. Control Box Assembly"

A. Main Assembly & Refrigeration Circuit

KM-1100MAJ

2/2

P-3 to Q-1



Title: A. Main Assembly & Refrigeration Circuit Model: KM-1100MAJ										
Index No.	Description	Material or Model Number	Part Number	Required Number						
				G-0 to L-0 (C)	L1 to L-3	M-0 to P-2	P-3 to Q-1			
Main Assembly										
1	Front Panel Assembly		1A6367A01	1	1	1	-			
			1A6367A02				1			
2	Louver Assembly (includes items 2 through 3)		2A6649A01	1	1	1	1			
	Louver		1A0547-01	2	2	2	2			
2a	Push Retainer		4A2414-01	6	6	-				
3	Air Filter		2A2062G01	2	2	2	2			
4	Gasket	L=762 mm	4A0808L02	1	1	1	1			
5	Front Insulation		3A8392G01	1	1	1	1			
6	Top Panel Assembly		3A1941A01	1	1	1	1			
7	Top Insulation		322714G01	1	1	1	1			
8	Right Side Panel		1A3617G01	1	1	1	1			
9	Control Box Cover		3A9007-01	1	1	-				
			3B1113-01			1	-			
			3B1942-01				1			
10	Junction Box Cover		433410-01	1	1	1	1			
11	Thermostatic Bulb Holder Bracket		322815G02	1	1	-				
12	Thermostatic Bulb Holder		3A3903-01	1	1	-				
12a	Thumbscrews		415949G10	2	2	-				
13	Thermostatic Capillary Tube Bushing		425307-02	1	1	-				
14	Silicone Hose	L=285 mm	773013812	1	1	1	1			
15	Mechanical Bin Control		2A8598G01			1	-			
	Ultrasonic Bin Control		4A6148G01				1			
15a	Thumbscrews		415949G01			2	1			
15b	Spacer		4A7285-01				1			
16	Mechanical Bin Control Bracket		3A6040-01			1	-			
16a	Thumbscrews		415949G12			2	1			
17	Mechanical Bin Control Extension Bracket		4A7068G01			1	-			
18	Main Transformer		4A5695-01	1	1	1	1			
19	Voltage Tap Switch		4A1477-01	1	1	1	1			

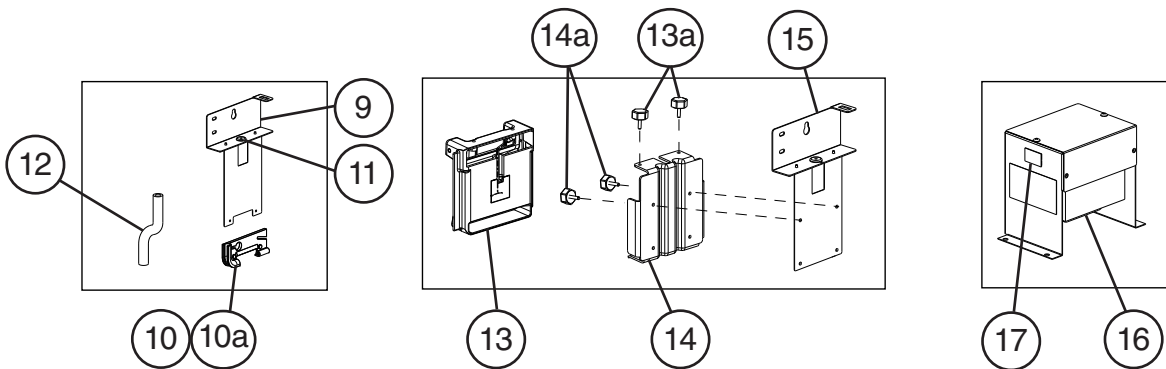
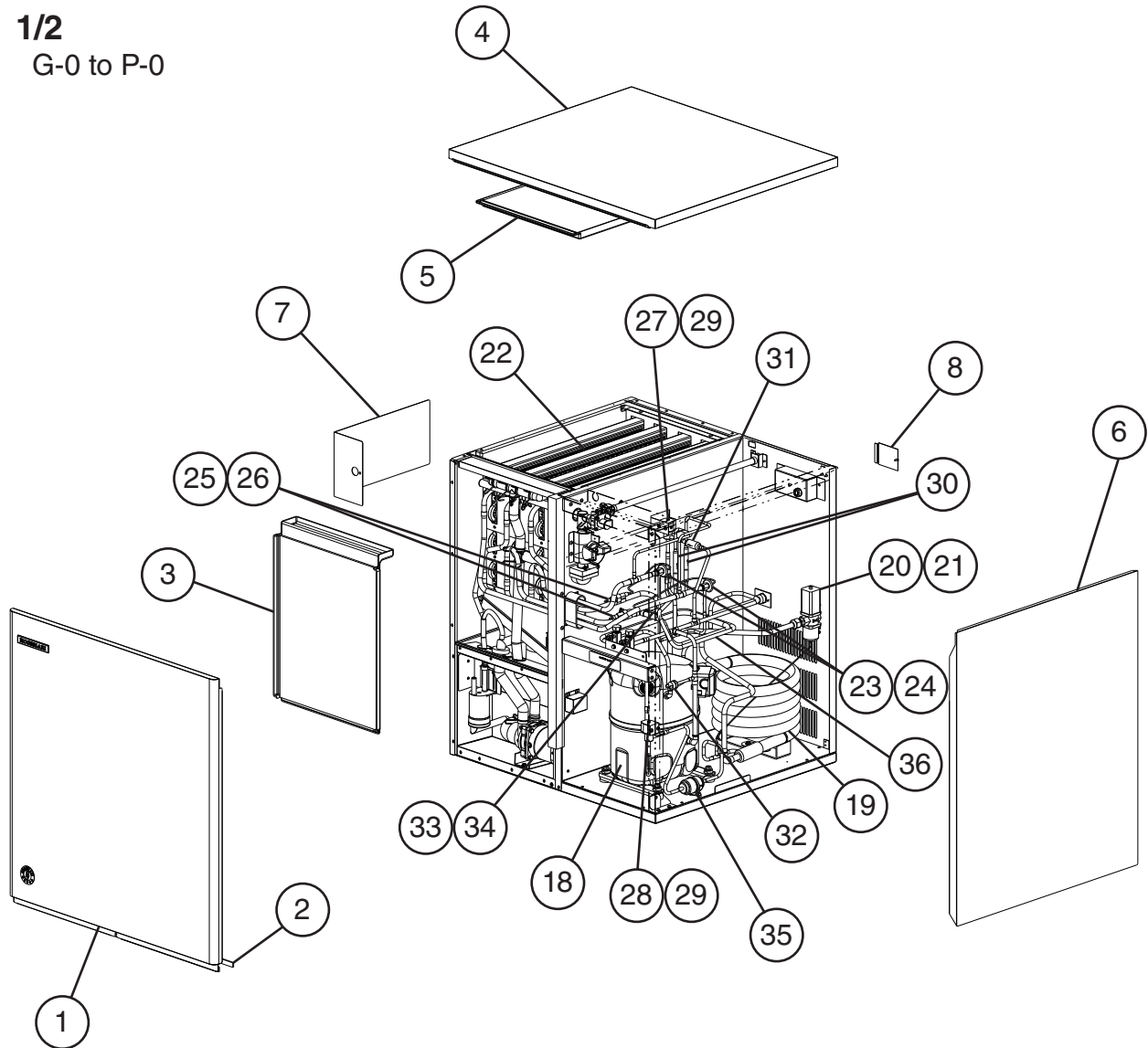
Title: A. Main Assembly & Refrigeration Circuit Model: KM-1100MAJ											
Index No.	Description	Material or Model Number	Part Number	Required Number							
				G-0 to L-0 (C)	L1 to L-3	M-0 to P-2	P-3 to Q-1				
Refrigeration Circuit											
20	Compressor		4A1539-03	1	1	1	1				
21	Condenser		1A4459-01	1	1	1	1				
22	Evaporator		1A3820G01	1	1	1	1				
23	Thermostatic Expansion Valve		4A4008-02	2	2	2	2				
24	Thermostatic Expansion Valve Cover		3A0944-01	2	2	2	2				
25	Thermostatic Expansion Valve Bulb Holder		3A0107-01	2	2	2	2				
26	Clamp		443461-02	2	2	2	2				
27	Hot Gas Valve Body		4A3978-01	1	1	1	1				
28	Liquid Line Valve Body		4A3276-01	1	1	1	1				
29	Valve Coil		4A3277-01	2	2	2	2				
30	Check Valve		4A1373-01	2	2	2	2				
31	Strainer		441569-04	1	1	1	1				
32	High-Pressure Switch		463180-04	1	1	1	1				
33	Thermistor		429006-03	1	1	1	1				
34	Thermistor Holder		427430-01	1	1	1	1				
35	Fan Motor	FM116A	4A3158-01	2	-						
			4A6115-01		2	2	2				
36	Fan Motor Capacitor	5 MFD, 250VAC	4A6435-01	2	-						
			4A6435-02		2	2	-				
		5.5 MFD, 250VAC	4A6435-03				2				
37	Fan Blade		4A3959-01	2	2	2	2				
38	Drier		4A1113-01	1	1	1	1				
39	Heat Exchanger		1A8019G01	1	1	1	1				

A. Main Assembly & Refrigeration Circuit

KM-1100MWJ

1/2

G-0 to P-0



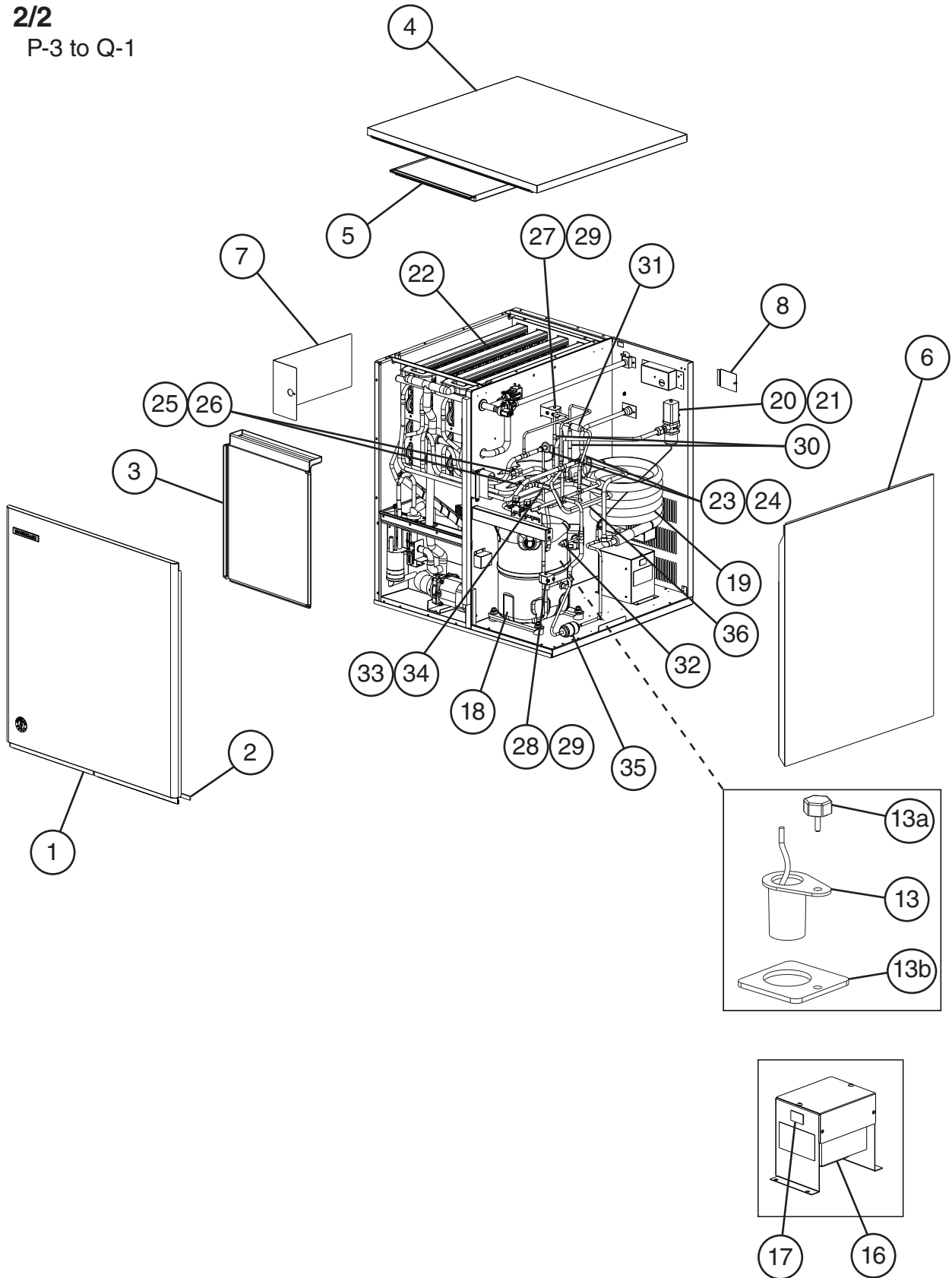
For Bin Control Thermostat,
see "C. Control Box Assembly"

A. Main Assembly & Refrigeration Circuit

KM-1100MWJ

2/2

P-3 to Q-1



Title: A. Main Assembly & Refrigeration Circuit Model: KM-1100MWJ													
Index No.	Description	Material or Model Number	Part Number	Required Number									
				G-0 to L-4	L-0 (K)	M-0 to P-0	P-3 P-4	Q-1					
Main Assembly													
1	Front Panel Assembly		1A6329G02	1	1	1	-						
			1A7686A01				1	1					
2	Gasket	L=762 mm	4A0808L02	1	1	1	1	1					
3	Front Insulation		3A8392G01	1	1	1	1	1					
4	Top Panel Assembly		3A1941A01	1	1	1	1	1					
5	Top Insulation		322714G01	1	1	1	1	1					
6	Right Side Panel		1A3617G01	1	1	1	1	1					
7	Control Box Cover		3A9007-01	1	-								
			3B1113-01		1	1	1	-					
			3B1942-01						1				
8	Junction Box Cover		433410-01	1	1	1	1	1					
9	Thermostatic Bulb Holder Bracket		322815G02	1	-								
10	Thermostatic Bulb Holder		3A3903-01	1	-								
10a	Thumbscrews		415949G10	2	-								
11	Thermostatic Capillary Tube Bushing		425307-02	1	-								
12	Silicone Hose	L=285 mm	773013812	1	-								
13	Mechanical Bin Control		2A8598G01		1	1	1	-					
	Ultrasonic Bin Control		4A6148G01						1				
13a	Thumbscrews		415949G10		2	2	2	1					
13b	Spacer		4A7285-01						1				
14	Mechanical Bin Control Bracket		3A6040-01		1	1	1	-					
			3B1037-01					1	-				
14a	Thumbscrews		415949G12		2	2	1						
15	Mechanical Bin Control Extension Bracket		4A7068G01		1	1	1	-					
16	Main Transformer		4A5695-01	1	1	1	1	1					
17	Voltage Tap Switch		4A1477-01	1	1	1	1	1					

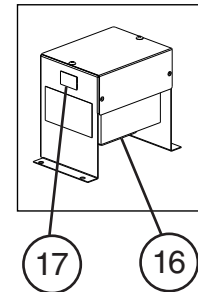
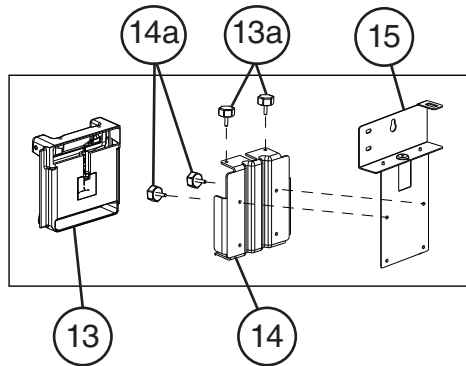
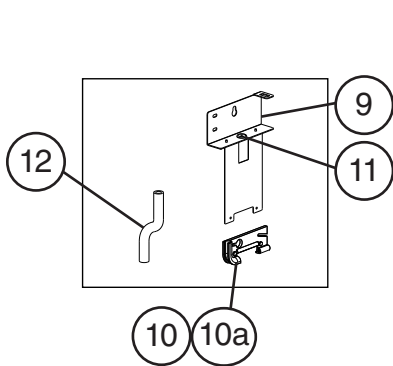
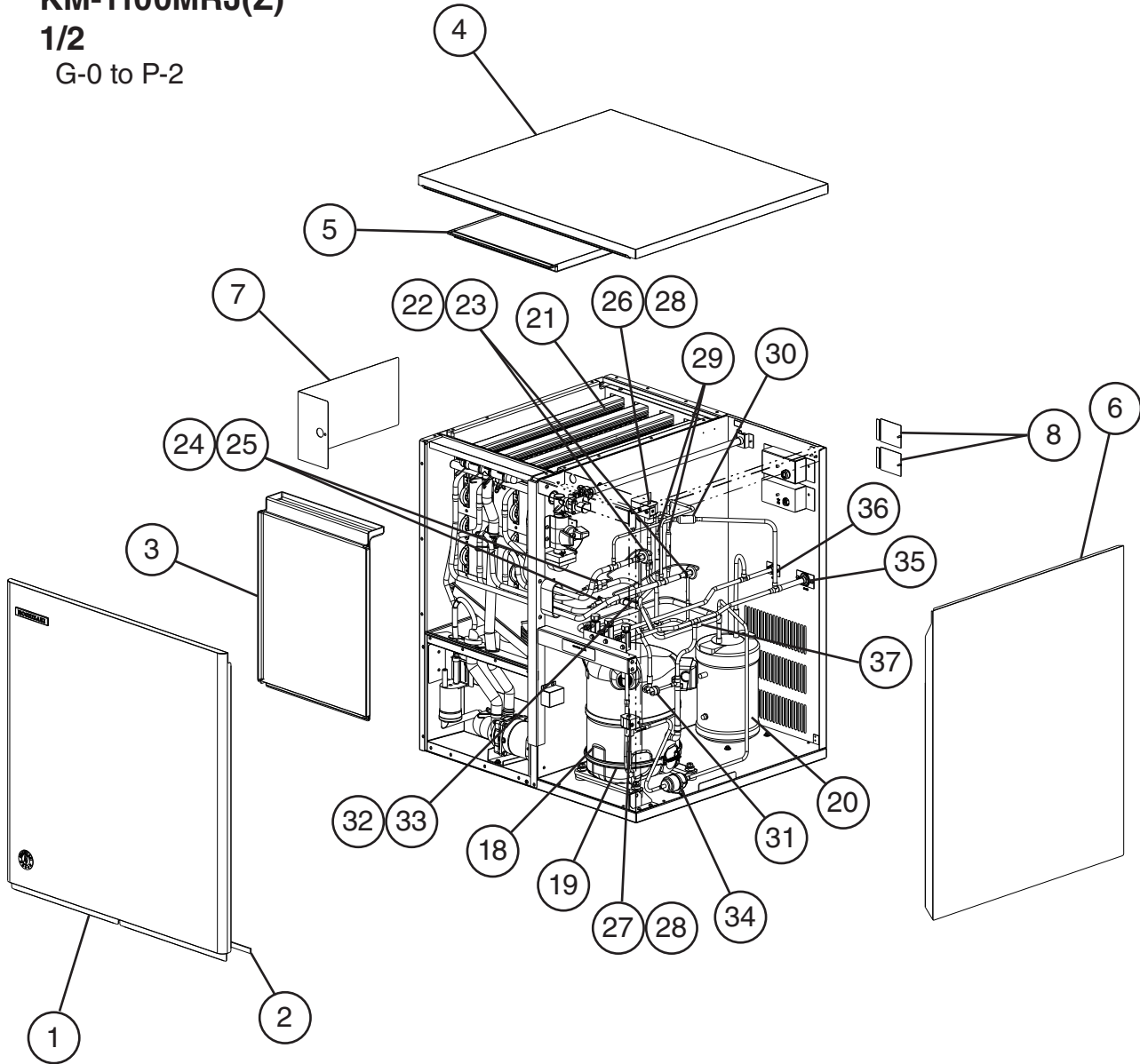
Title: A. Main Assembly & Refrigeration Circuit Model: KM-1100MWJ												
Index No.	Description	Material or Model Number	Part Number	Required Number								
				G-0 to L-4	L-0 (K)	M-0 to P-0	P-3 P-4	Q-1				
Refrigeration Circuit												
18	Compressor		4A1539-03	1	1	1	1	1				
19	Condenser		3A7323-01	1	1	1	1	1				
20	Water Regulating Valve		4A0911-07	1	1	1	1	1				
21	Male Connector		4A1087-01	1	1	1	1	1				
22	Evaporator		1A3820G01	1	1	1	1	1				
23	Thermostatic Expansion Valve		4A4008-02	2	2	2	1	1				
24	Thermostatic Expansion Valve Cover		3A0944-01	2	2	2	2	2				
25	Thermostatic Expansion Valve Bulb Holder		3A0107-01	2	2	2	2	2				
26	Clamp		443461-02	2	2	2	2	2				
27	Hot Gas Valve Body		4A3978-01	1	1	1	1	1				
28	Liquid Line Valve Body		4A3276-01	1	1	1	1	1				
29	Valve Coil		4A3277-01	2	2	2	2	2				
30	Check Valve		4A1373-01	2	2	2	2	2				
31	Strainer		441569-04	1	1	1	1	1				
32	High-Pressure Switch		463180-05	1	1	1	1	1				
33	Thermistor		429006-03	1	1	1	1	1				
34	Thermistor Holder		427430-01	1	1	1	1	1				
35	Drier		4A1113-01	1	1	1	1	1				
36	Heat Exchanger		1A7725G01	1	1	1	1	-				
			1A8019G01					1				

A. Main Assembly & Refrigeration Circuit

KM-1100MRJ(Z)

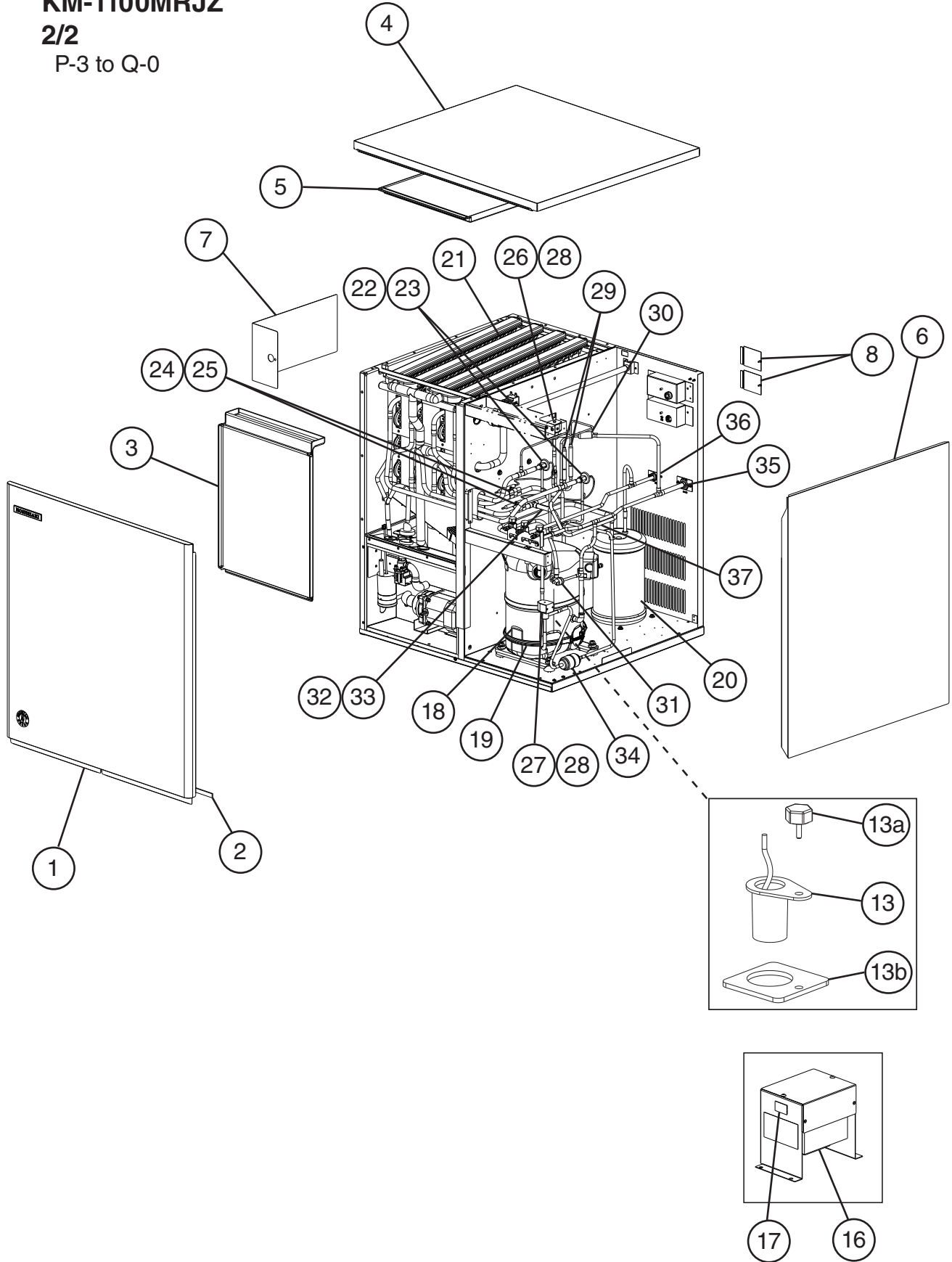
1/2

G-0 to P-2



For Bin Control Thermostat,
see "C. Control Box Assembly"

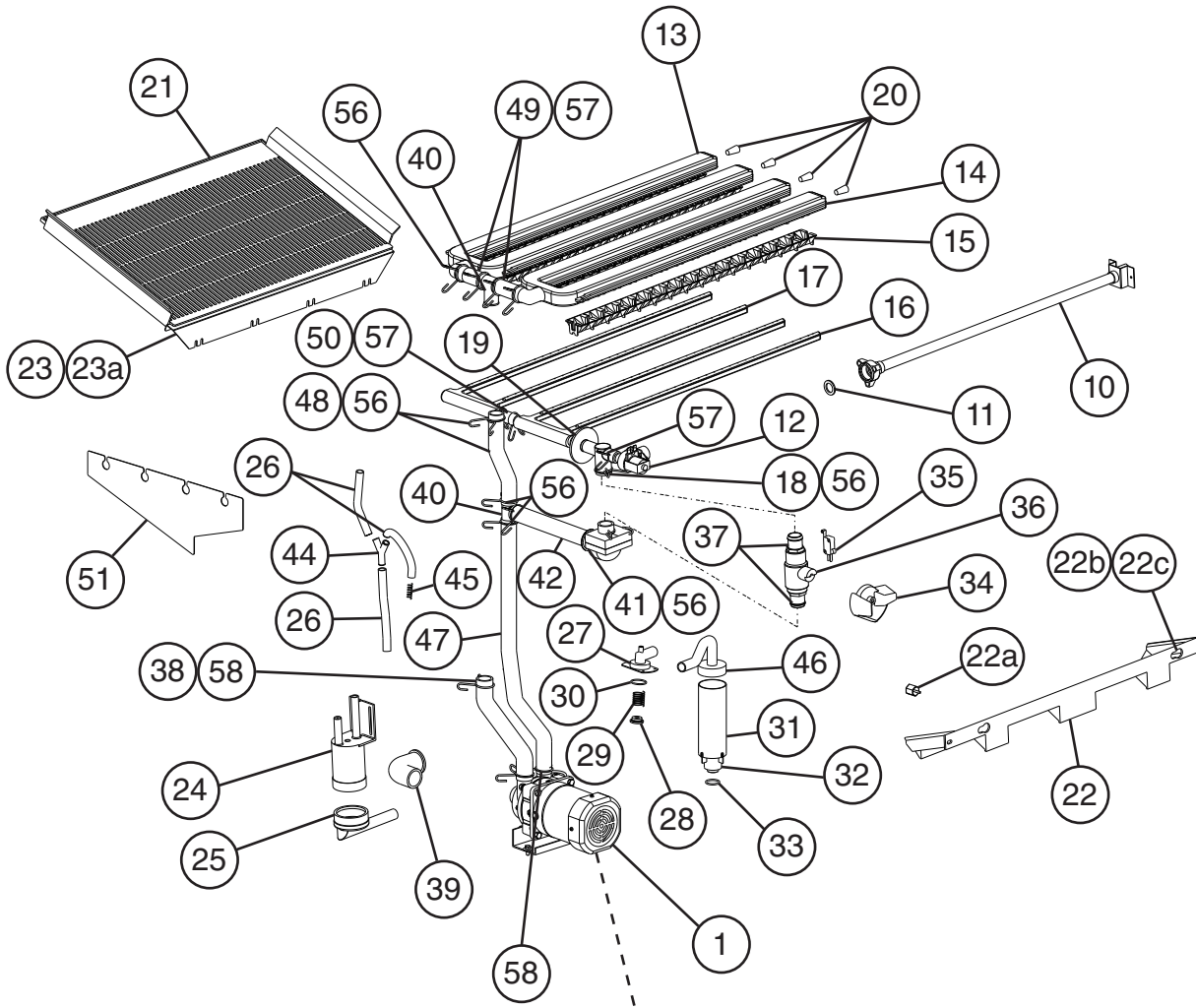
A. Main Assembly & Refrigeration Circuit
KM-1100MRJZ
2/2
 P-3 to Q-0



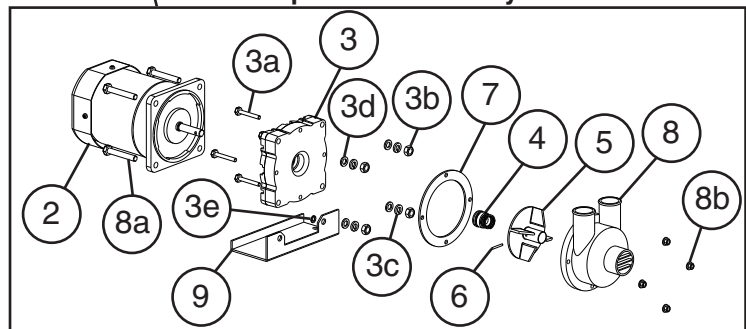
Title: A. Main Assembly & Refrigeration Circuit Model: KM-1100MRJ(Z)												
Index No.	Description	Material or Model Number	Part Number	Required Number								
				G-0 to L-4	L-0 (K)	M-0 to P-2	P-3 P-4	Q-0				
Main Assembly												
1	Front Panel Assembly		1A6329G01	1	1	1	-					
			1A7686A01				1	1				
2	Gasket	L=762 mm	4A0808L02	1	1	1	1	1				
3	Front Insulation		3A8392G01	1	1	1	1	1				
4	Top Panel Assembly		3A1941A01	1	1	1	1	1				
5	Top Insulation		322714G01	1	1	1	1	1				
6	Right Side Panel		1A3617G01	1	1	1	1	1				
7	Control Box Cover		3A9007-01	1	1	1	-					
		KM-1100MRJ	3B1113-01				1	1				
		KM-1100MRJZ	3B1942-01					1				
8	Junction Box Cover		433410-01	2	2	2	2	2				
9	Thermostatic Bulb Holder Bracket		322815G02	1	-							
10	Thermostatic Bulb Holder		3A3903-01	1	-							
10a	Thumbscrews		415949G10	2	-							
11	Thermostatic Capillary Tube Bushing		425307-02	1	-							
12	Silicone Hose	L=285 mm	773013812	1	-							
13	Mechanical Bin Control	KM-1100MRJ	2A8598G01		1	1	-					
	Ultrasonic Bin Control	KM-1100MRJZ	4A6148G01				1	1				
13a	Thumbscrews	KM-1100MRJZ	415949G10		2	2	-					
13b	Spacer	KM-1100MRJZ	435087-01	1	1	1	-					
			4A7285-01				1	1				
14	Mechanical Bin Control Bracket	KM-1100MRJ	3A6040-01		1	1	-					
14a	Thumbscrews	KM-1100MRJ	415949G12		2	2	1	1				
15	Mechanical Bin Control Extension Bracket	KM-1100MRJ	4A7068G01		1	1	-					
16	Main Transformer		4A5695-01	1	1	1	1	1				
17	Voltage Tap Switch		4A1477-01	1	1	1	1	1				

Title: A. Main Assembly & Refrigeration Circuit Model: KM-1100MRJ(Z)											
Index No.	Description	Material or Model Number	Part Number	Required Number							
				G-0 to L-4	L-0 (K)	M-0 to P-2	P-3 P-4	Q-0			
Refrigeration Circuit											
18	Compressor		4A1539-03	1	1	1	1	1			
19	Crankcase Heater		4A5397-02	1	1	1	1	1			
20	Receiver		4A6213-01	1	1	1	1	1			
21	Evaporator		1A3820G01	1	1	1	1	1			
22	Thermostatic Expansion Valve		4A4008-02	2	2	2	2	2			
23	Thermostatic Expansion Valve Cover		3A0944-01	2	2	2	2	2			
24	Thermostatic Expansion Valve Bulb Holder		3A0107-01	2	2	2	2	2			
25	Clamp		443461-02	2	2	2	2	2			
26	Hot Gas Valve Body		4A3978-01	1	1	1	1	1			
27	Liquid Line Valve Body		4A3276-01	1	1	1	1	1			
28	Valve Coil		4A3277-01	2	2	2	2	2			
29	Check Valve		4A1373-01	2	2	2	2	2			
30	Strainer		441569-04	1	1	1	1	1			
31	High-Pressure Switch		463180-04	1	1	1	1	1			
32	Thermistor		429006-03	1	1	1	1	1			
33	Thermistor Holder		427430-01	1	1	1	1	1			
34	Drier		4A1113-01	1	1	1	1	1			
35	Discharge Line Coupling	KM-1100MRJ	434136G01	1	-						
	Discharge Line Service Valve	KM-1100MRJZ	4A4822-01		1	1	1	1			
36	Liquid Line Coupling	KM-1100MRJ	4A3887G01	1	-						
	Liquid Line Service Valve	KM-1100MRJZ	4A3491-01		1	1	1	1			
37	Heat Exchanger		1A3601G01	1	1	1	-				
			1A7725G01				1	-			
			1A8019G01					1			

B. Water Circuit
KM-1100M_J(Z)
1/2
 G-0 to P-2



Pump Motor Assembly



Title: B. Water Circuit Model: KM-1100M_J(Z)												
Index No.	Description	Material or Model Number	Part Number	Required Number								
				G-0 to L-0	L-1	L-2 to L-4	M-0 to P-2	P-3 to Q-0	Q-1			
1	Pump Motor Assembly (includes items 2 through 9)	S-0731	215693A01	1	1	1	1	-				
			2B0399A01					1	1			
2	Pump Motor		3A7682-01	1	1	-						
			2U0106-01			1	1	1	1			
3	Pump Flange		215662-01	1	1	1	1	1	1			
3a	Hex Bolt	4x30	7B02-0430	4	4	4	4	4	4			
3b	Hex Nut		7N12-0600	4	4	4	4	4	4			
3c	Split Lock Washer		7L22-0600	4	4	4	4	4	4			
3d	Flat Washer		7W22-0600	4	4	4	4	4	4			
3e	Tooth Washer		7R22-0600	1	1	1	1	1	1			
4	Mechanical Seal		4A3820-03	1	1	1	1	1	1			
5	Impeller		428548-01	1	1	1	1	1	1			
6	Pin		4A0648-01	1	1	1	1	1	1			
7	Packing		428547-01	1	1	1	1	1	1			
8	Pump Housing		212636-01	1	1	1	1	-				
			2A2762-01					1	1			
8a	Hex Bolt	6x40	7B02-0640	4	4	4	4	4	4			
8b	Hex Flange Nut		7J02-0400	4	4	4	4	4	4			
9	Pump Motor Bracket		435057-01	1	1	1	1	1	1			
10	Water Supply Pipe		4A5216G04	1	1	1	1	1	1			
11	Rubber Gasket		4A7594-01	1	1	1	-					
			413854-03				1	1	1			
12	Inlet Water Valve	KM-1100MAJ KM-1100MWJ	3U0111-01	1	1	1	1	-				
			3B1433-01					1	-			
			3U0111-01							1		
		KM-1100MRJ	3B1433-02	1	1	1						
		KM-1100MRJZ	4A6722-07				1	-				
			3B1433-07					1	1			
13	Left Spray Tube		1A0260-02	1	1	1	1	1	1			
14	Right Spray Tube		1A0260-01	1	1	1	1	1	1			
15	Spray Guide		2A4282-02	4	4	4	4	4	4			
16	Right Water Supply Tube		2A0079-02	1	1	1	1	1	1			
17	Left Water Supply Tube		2A0079-01	1	1	1	1	1	1			
18	Distributor A (Tee)		4A0177-01	1	1	1	-					
			3A9429-01				1	1	1			
19	Flange	KM-1100MAJ KM-1100MWJ	439267-01	1	1	1	1	1	1			
20	Plug		4A0176-01	4	4	4	4	4	4			
21	Cube Guide A		214905-01	1	1	1	1	1	1			
22	Cube Guide B		322644-02	1	1	1	1	1	1			
22a	Thumbscrew		415949G01	1	1	1	1	1	1			
22b	Collar		435269-01	1	1	1	1	1	1			
22c	Screw	4x6	7C22-0412	2	2	2	2	2	2			
23	Plate		3B0973-01	1	1	1	1	1	1			
23a	T2 Screw	4x10	7P32-0410	4	4	4	4	4	4			
24	Float Switch Assembly		4A7077G02	1	1	1	1	1	1			
25	Float Switch Connector		426799-01	1	1	1	1	1	1			

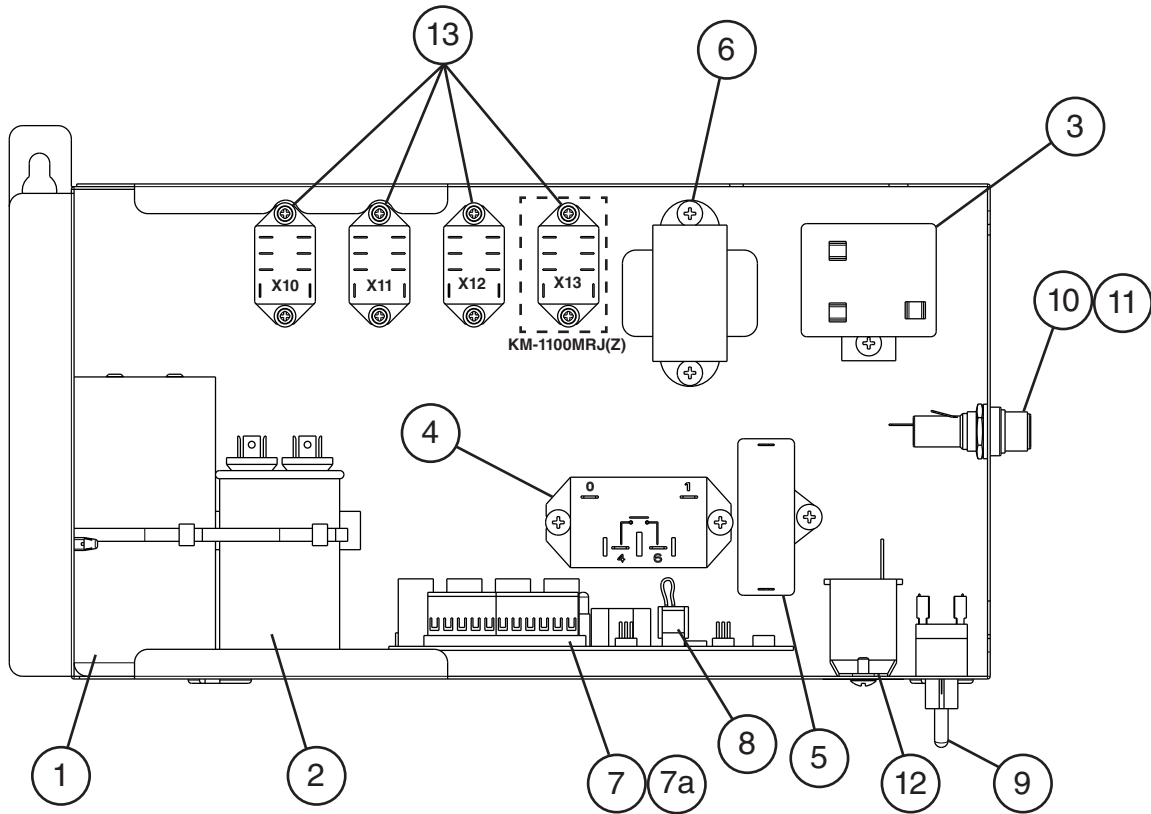
Title: B. Water Circuit Model: KM-1100M_J(Z)

Index No.	Description	Material or Model Number	Part Number	Required Number																
				G-0 to L-0	L-1	L-2 to L-4	M-0 to P-2	P-3 to Q-0	Q-1											
26	Silicone Hose	L=135 mm (each)	773013812	3	3	3	3	3	3											
27	Drain Valve Housing		3A1170-01	1	1	1	1	1	1											
28	Valve Seat		433705-01	1	1	1	1	-												
29	Spring		322685-01	1	1	1	1	-												
30	O-Ring		7611-G035	1	1	1	1	1	1											
31	Overflow Cap		322816-01	1	1	1	1	1	1											
32	Overflow Pipe		322691-02	1	1	1	1	1	1											
33	O-Ring		4A1234-01	1	1	1	1	-												
			7611-G035					1	1											
34	Cleaning Valve Handle		215383-01	1	1	1	1	-												
35	Cleaning Valve Microswitch		4A2546-01	1	1	1	1	-												
36	Cleaning Valve Ball Valve		439293-01	1	1	1	1	-												
37	Cleaning Valve Male Adaptor		325826-01	2	2	2	2	-												
38	Drain Hose		435092-01	1	1	1	1	-												
			3B1457-01					1	1											
39	Inlet Hose A		435091-01	1	1	1	1	1	1											
40	Distributor B (Tee)		432426-01	2	2	2	2	2	2											
41	Rubber Ring		439236-01	1	1	1	1	1	1											
42	Bypass Hose		439265-01	1	1	1	1	-												
	3-Piece Bypass Hose Assembly (includes item 43)		3B1376G01					1	1											
43	Joint Pipe		4A6286-01					1	1											
44	Connector		432763-01	1	1	1	1	1	1											
45	Spring		435825-01					1	1											
46	Distributor Hose (C)		326655-01	1	1	1	1	1	1											
47	Vinyl Hose	L=470 mm	7716B2025	1	1	1	1	1	1											
48	Vinyl Hose	L=170 mm	7716B2025	1	1	1	1	1	1											
49	Vinyl Hose	L=63 mm	7716B2025	2	2	2	2	2	2											
50	Vinyl Hose	L=140 mm	7730-1519	1	1	1	1	1	1											
51	Splash Guard		4A6118-01	1	1	1	1	1	1											
52	Drain Hose B		3B1462-01					1	1											
53	Drain Valve		4A5745-07					1	1											
54	Cleaning Valve		4A5745-06					1	1											
55	Drain Valve Terminal Cover		3B1856-01					1	1											
Hose Clamps																				
56	Hose Clamp	25 mm	427443-03	11	11	11	11	9	9											
57	Hose Clamp	18 mm	427443-05	3	3	3	3	6	6											
58	Hose Clamp	27 mm	427443-08	2	2	2	2													

C. Control Box Assembly KM-1100M_J(Z)

1/2

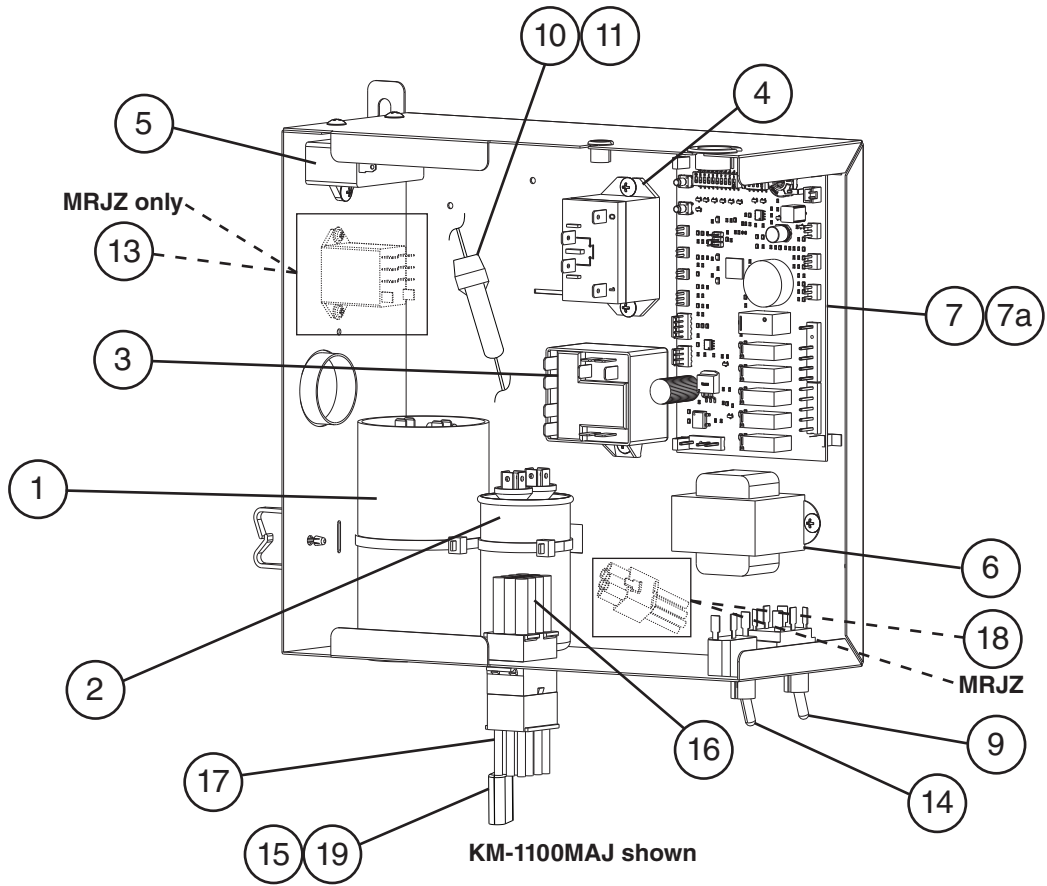
G-0 to P-2



C. Control Box Assembly KM-1100M_J(Z)

2/2

P-3 to Q-1

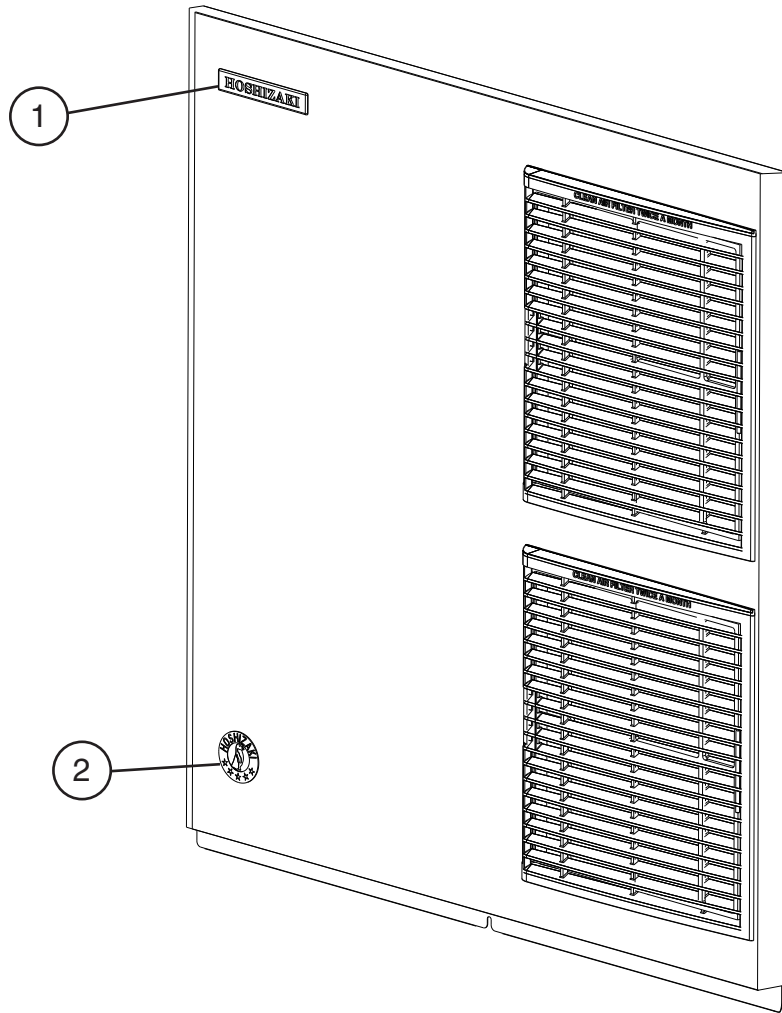


Title: C. Control Box Assembly Model: KM-1100M_J(Z)												
Index No.	Description	Material or Model Number	Part Number	Required Number								
				G-0 to L-1	L-2 to L-4	L-0 (K)	L-1 (M) to P-2	P-4 (K) to Q-1				
1	Start Capacitor	145-174MFD, 220VAC	3A0076-11	1	1	1	1	1				
2	Run Capacitor	30MFD, 370VAC	3A2005-03	1	1	1	1	1				
3	Start Relay		4A1107-09	1	1	1	1	1				
			4A1107-13	1	1	1	1	1				
4	Compressor Relay		4A3140-01	1	1	1	1	1				
5	Pump Motor Capacitor	10MFD, 250VAC	443192-01	1	1	1	1	-				
		15MFD, 240VAC	439705-01					1				
6	Control Transformer		3A0172-01	1	1	1	1	1				
7	Control Board		2A7664-04	1	1	1	1	-				
			2A9678-02					1				
7a	Control Board Support		4A0336-03	4	4	4	4	4				
8	K4 Jumper		4A4883G01	1	1	1	1	-				
9	Control Switch		443119-01	1	1	1	1	-				
	Mode Switch		4A6232-01					1				
10	Fuse Holder	KM-1100MAJ	4A5443-01	1	1	1	-					
		KM-1100MWJ KM-1100MRJ		1	1	-						
	In-Line Fuse Holder (not shown)	KM-1100MAJ	4A6950-01				1	1				
		KM-1100MWJ KM-1100MRJZ				1	1	1				
11	Fuse	AGC-10, 250VAC, 10A	4A0893-07	1	1	1	1	1				
12	Bin Control Thermostat		4A2879-02	1	1	-						
13	Relay X10 - Pump Motor Relay X11 - X10 Control Relay X12 - Slush Control Relay	All Models	406132-07	3	3	3	3	-				
	X13 - Crankcase Heater Relay	KM-1100MRJ(Z)		1	1	1	1	-				
	X10 - Crankcase Heater Relay							1				
14	Control Switch		4A0985-01					1				
15	Noise Killer (capacitor)	KM-1100MAJ	4A7911G01					1				
16	Wire Harness A (includes items 10 and 11)	KM-1100M_J(Z)	1A7314-01					1				
17	Wire Harness B	KM-1100M_J(Z)	1A7316-01					1				
18	Wire Harness C	KM-1100MRJ(Z)	1A5697-01					1				
19	Compressor Harness (not shown)		1A4899-01					1				
		KM-1100MWJ	1A4899-02					1				

D. Accessories & Labels

KM-1100M_J(Z)

G-0 to Q-1



Title: D. Accessories & Labels Model: KM-1100M_J(Z)										
Index No.	Description	Material or Model Number	Part Number	Required Number						
				G-0 to Q-1						
1	Hoshizaki Emblem Label		4A0560-01	1						
2	Penguin Label		475552L02	1						
3	Universal Brace		4A0363-01	2						
3a	Hex Head Bolt		7B02-0512	2						