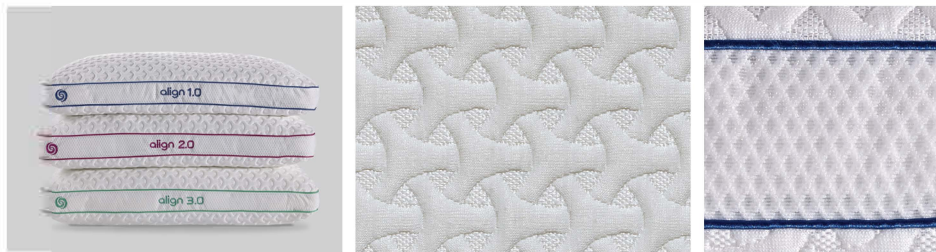




DRI-TEC® TECHNOLOGY

ALIGN SERIES PERFORMANCE PILLOWS®



Features:

- **Dri-Tec®** moisture management fabric in a structural pattern.
- Metallic corded seams and **Air-X®** ventilated panels, for optimal air flow.
- All gussets display their custom-fit sleep position for easy stock & shopping; each pillow is filled with a unique down-alternative hypoallergenic fill, designed to create the proper support for each sleep style... "A Bed for Your Head".

Stomach Sleeper ID (Queen, King):

- Soft surface creates cushions and moves with you
- Conforming fill fits to your facial contours
- Migrating loft allows maximum air passage

Back Sleeper ID (Queen, King):

- Perfect mix of flexible and firm
- Graduated fibers cradle your skull base
- Self-leveling fill reduces neck strain

Side Sleeper ID (Queen, King):

- Recharge with high-profile pressure relief
- Recovery fibers maintain performance
- Structure eliminates neck compression

