

AXOR Starck
Pot Filler, Deck-Mounted
 Finishes : **chrome** Part no. : **10860001**



Description

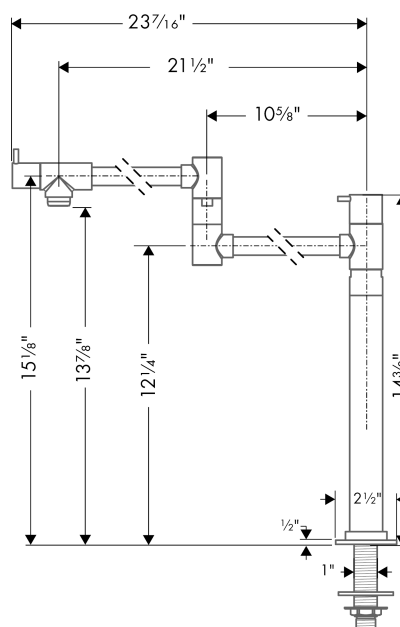
Features

- Swivel range 360°
- Aerated spray
- Single-hole installation
- Flow: 2.5 GPM (9.5 L/Min)
- 90° ceramic valves
- ½" NPT

Product image



Scale drawing

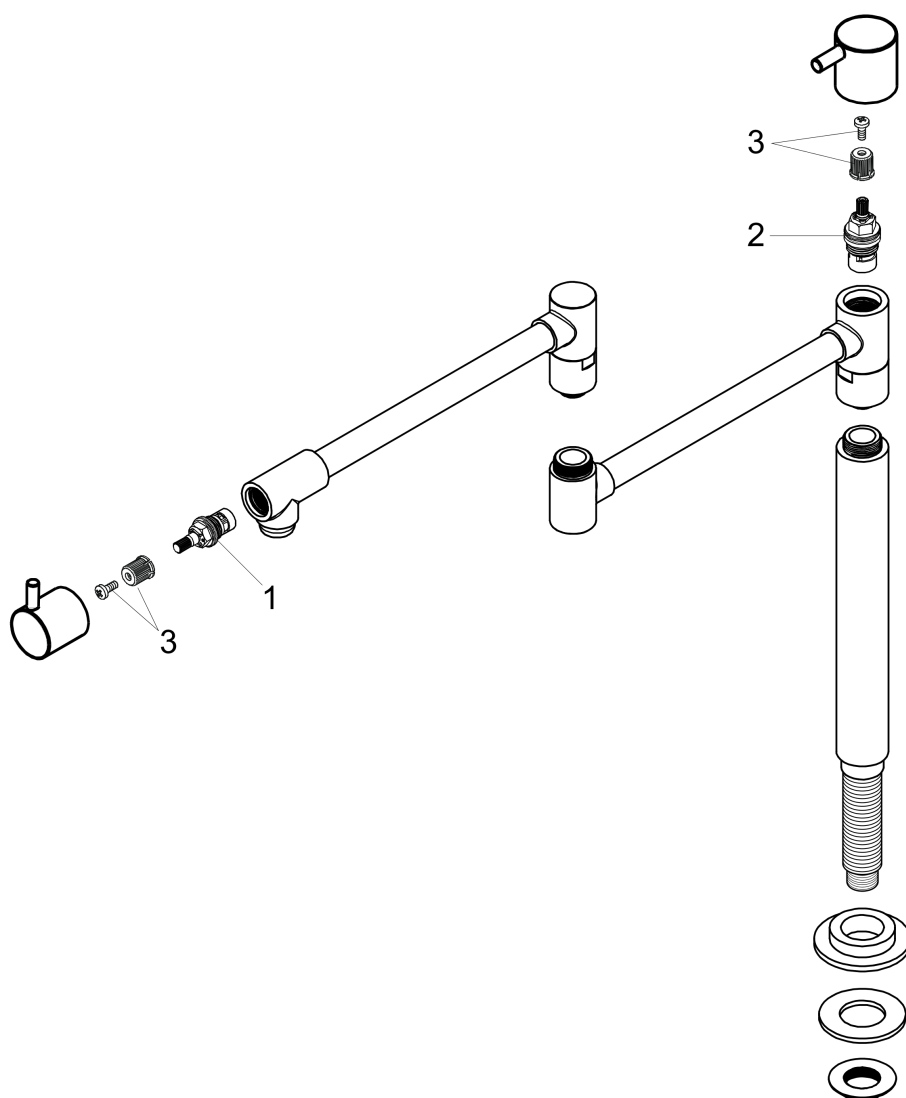


AXOR Starck
Pot Filler, Deck-Mounted
 Finishes : **chrome** Part no. : **10860001**



Exploded drawing

Year of production: >08/10



AXOR Starck
Pot Filler, Deck-Mounted
 Finishes : **chrome** Part no. : **10860001**



Spare parts list

Year of production: >08/10

Pos.	Description	Part no.	PC	PU
1	shut off unit	88789000	0	1
2	shut off unit	88790000	0	1
3	handle fixing set	98932000	0	1